

Westcombenews

Free to 3800 homes, in libraries and shops and online

June 2025 No5

‘June is the time of perfect young summer’ — and the perfect time to reflect on our year.’

AGM – Annual Report

Westcombe Society Annual General Meeting - 9th May 2025 Chair's Annual Report 2024-2025

Another busy year for the Westcombe Society which is fortunate to have a number of members willing to take on a generous share of its work through the Events Sub-Committee and the Environment Sub-Committee and by taking responsibility for the Westcombe News - they report separately and in more detailed form - but I wanted to give a flavour of all they do.

The Events Sub-Committee continues to organise successful fund raising activities which, in particular, support our charity of the year donation, for this year Action for Refugees in Lewisham, and the Macmillan cancer charity with the hugely popular coffee morning and the well supported sponsored walk.

They also organise the annual members and helpers party.

The Environment Sub-committee works tirelessly to monitor and comment where appropriate on planning applications and traffic issues with the Low Traffic Neighbourhood scheme having been high on its list of priorities.

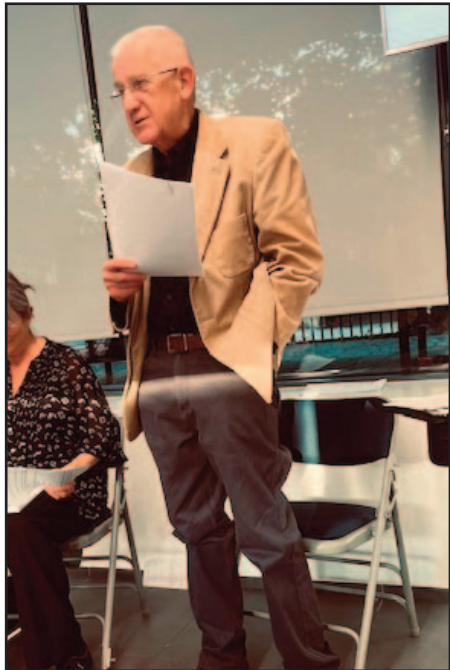
Westcombe News: Residents have

continued to receive the Westcombe News with its ten issues a year provided free to the local community. Many thanks to the volunteers who organise and carry out the deliveries. Our enthusiastic editor, Christine Fells, leads an experienced editorial team and, with special thanks to Marilyn Little's work on advertising, it is encouraging to note that the WN's financial position has improved since last year.

The Society's Executive Committee deserves a mention for their contribution and support during the past year and in particular Jean-Jacques Aune who took on the role of Vice-Chair and Miles Storey (Treasurer) for his expert stewardship of the Society's finances, which is reflected in his report, and Christine Legg for keeping our membership records in good order.

At last year's AGM Jane Wilson stood down as our Secretary but we were delighted that this proved to be temporary and to be able to welcome Jane back to the role, which she had filled so admirably, during the year. We should also record our thanks to Andrew Graham for stepping into the

breach during the interim period. As Chair of the Society I would like to thank our relatively small band of volunteers who keep the organisation functioning as effectively as it does - and do let us know if you would like to become part of that group.



Thanks are due to the members of the Society for their support and encouragement.

During the year we were sad to lose several friends of the Society. These included Caroline Owens well known to many for her

outstanding work for the Society and the local community over many years and Barbara Henley another long standing and stalwart supporter of the Society.

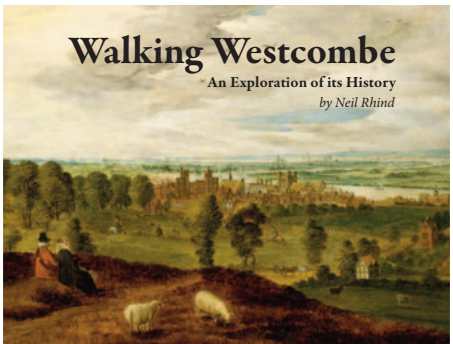
For the coming year what are the issues that seem likely to be to the fore. Possibly the effects of the Silvertown Tunnel which opened for business just a month ago on 7th April and, almost certainly, the Low Traffic Neighbourhood (LTN) scheme which continues its experimental implementation.

The Council's LTN has always been controversial and has even attracted coverage in the national media, for example with a highly critical Daily Mail article by Robert Hardman. Whatever the merits or otherwise of the scheme - and its introduction has been described as a shambles - LTN's can cause divisions in local communities with some residents enjoying the benefits of a quieter environment and others concerned about air quality from displaced traffic and longer journey times on diversion routes. The Westcombe Society will be continuing to monitor developments that is for sure.

Geoff Brighty

*Chair: Westcombe Society
May 2025*

Walking Westcombe



Soon to be published, Walking Westcombe was one of local historian and author Neil Rhind's last projects. Not quite complete at the time of Neil's death in February 2024, his literary executors tied up the loose ends, allowing the Blackheath Society to progress the project towards completion.

We in the Westcombe Society are delighted to be supporting publication of the book, which it is hoped will be available during June. Walking Westcombe is the third in the series of Neil's local walking guides, preceded by Walking the Heath (2013) and Walking the Village (2017 and 2022) by Neil

Rhind and Dr Roger Marshall. It suggests 12 walks, mostly at the heart of the area we cover, and contains a wealth of historical detail. So look out for Walking Westcombe, which is expected to cost £12 at Waterstones and the Blackheath Bookshop, both in Blackheath Village. *Geoff Brighty*

Beacon for VE Day



It was a beautiful, if slightly chilly evening for the lighting of a beacon on Blackheath to commemorate 80 years since Victory in Europe (VE) day. 8pm on May 8th. The crowd were entertained by the excellent Lewisham Concert Brass Band.

SUPER SUMMER

at JULY & AUGUST
Mycenae House
& Gardens

- 0 PARKSfest 2025 FAMILY FUN DAY
- 0 A Celebration of Summer Live Music Concerts
- 0 KIDS LEARNING & HOLIDAY CLUBS
- 0 BBC Radio 4 Any Questions Panel Discussions
- 0 FUN, PLAY & MEET UPS IN THE GARDEN
- 0 Cafe/Bar Food & Ice Cream

ARTS CODING DANCE THEATRE MUSIC STEM PLAY

WHATS ON THIS SUMMER AT YOUR FAVORITE VENUE

WESTCOMBE SOCIETY

Westcombe News

PUBLISHER
The Westcombe Society
c/o 163 Westcombe Hill, SE3 7DP or
info@westcombesociety.org

CHAIR: Geoff Brighty

EDITOR: Christine Fells

EDITORIAL TEAM /
CONTRIBUTORS
Marilyn Little
Polly Morgan
Amanda Arthur
Helen Marley-Hutchinson
Anne Robbins
Ann Hill
Diane Blackwell

ALL EDITORIAL
CORRESPONDENCE/PRESS
MATERIAL TO BE SENT TO:
wnews@westcombesociety.org
Deadline for July copy
13th June 2025

SUB EDITOR
Annie Grey

ENVIRONMENT
Editor: Maggie Gravelle
All comments and queries to
Emily Norton: 0208 853 2756
environment@westcombesociety.org

ADVERTISING MANAGER
Marilyn Little
advertising@westcombesociety.org
Deadline for July Advertising:
16th June 2025

DISTRIBUTION/DELIVERY
Emily Norton and volunteers
Tel: 0208 853 2756
info@westcombesociety.org

PRINTING
Trojan Press.
Email: info@trojanpress.co.uk
www.trojanpress.com

The views expressed in the
Westcombe News are not necessarily
those of the Westcombe Society or
of the Editor. We take all reasonable
precautions to protect the interests of
our readers by ensuring as far as
possible the bona fides of our
advertisers but cannot accept any
responsibility for them. Any com-
plaints should be addressed to the
advertiser.
To access back numbers (in colour)
go to:
http://www.westcombesociety.org/
westcombenews

**Westcombe Society
Membership**

We would be delighted to receive
your support and annual
membership subscription.

Family membership	£15
Individual membership	£12
Senior Citizens and Unwaged	£6

Please send payment to:
Christine Legg, 69 Mycenae
Road, London, SE3 7SE
or email:
membership@westcombesociety.org

Advertising Rates

SIZE	Per Issue Cost	5 Issue Discounted Cost
Standard 6cm x 6cm (one column wide)	£48	£220
2 x standard (horizontal or vertical)	£76	£350
3 x standard	£107	£485
4 x standard	£138	£620

Concerts in Greenwich Park




The Friends of Greenwich Park are again staging their highly popular season of concerts in the Park this summer. Their Midsummer Jazz concert takes place on Sunday 22 June in the Royal Observatory Garden from 12.30pm to 3pm. It again features the superb South London Jazz Orchestra, returning by popular demand. This is a family event, with a bar, refreshments and ice cream. Tickets are £8 (children go free) and available online at www.friendsofgreenwichpark.org.uk

This will be followed by the Friends' Bandstand concerts on all Sundays from 6 July until 31 August, and on

A Whiz of a Quiz

The questions came thick and fast and the brains strained, except at the winning table where the six occupants quietly blasted the rest of us out of the water.



The Spring Quiz at Mycenae House was a jolly affair with a sprinkling of groans when answers were wrong, quizmasters who showed no mercy, a delicious feast of fish and chips at half time and money raised for our Charity of the Year.



A special thanks to the Mycenae House staff who helped make the night a hit. *Diane Blackwell*

**Blackheath Joint
Working Party –
Open Meeting**

The next open meeting will take place at 7pm on Tuesday 10th June at Blackheath High School, Vanbrugh Park.

If you care about the future of Blackheath's open space, we encourage you to attend. More details are available at www.westcombesociety.org.



Bank Holiday Monday 25 August. All concerts, which are free, start at 3pm and end at 5pm.

**Car Park
Blackheath**

The Blackheath Society's planning group has submitted a detailed letter of objection in response to the proposed Station Car Park development which can be viewed at www.blackheath.org/

CARPENTER

Specialist in
refurbishment, repair and
replacement of
sash windows,
front doors overhauled.

Call
MALCOLM TIERNEY
07775 657371

WRISTWORTH HEATING & PLUMBING

Installation - Servicing - Repair

Tel: 07725 008280
Email: wristworth@hotmail.co.uk



Check Out Our **NEW** Website: wristworthheating.weebly.com

Bruca Gardens | Local gardeners

We offer regular and one-off garden maintenance services for private and residential gardens.



- Garden design
- Landscaping
- Garden clearance
- Garden maintenance
- Planting and soft landscaping
- Trees and shrubs specialist pruning

Contact us at **07896992548**
brucagardens.co.uk

Lively AGM

Our 2025 AGM was a buzz of discussion about local issues, such as the Low Traffic Neighbourhood scheme. The meeting was well attended and once the official matters had been completed the highlight of the evening was a talk given by Sophie Wickham, director of Action for Refugees in Lewisham (AFRIL). As Sophie pointed out, AFRIL, which was the Westcombe Society's 2024 Charity of the Year, has now spread further than Lewisham in our local area, such is the need. With the help of an excellent video in which young people spoke frankly of their personal situations and experiences, Sophie outlined the vital work of AFRIL, focussing on the Rainbow



Club Saturday School where the Society's donation went to help educate and rebuild young lives in our community. Should you wish to contact the charity for further information please email info@afiril.org.uk. The evening ended with nibbles and wine. A big thank you to Blackheath High School for allowing us to use one of their rooms for our meeting. *Diane Blackwell*

Advertising Manager

The Westcombe News seeks a new advertising manager. Tasks in this voluntary position include responding to queries for new ads, invoicing and monitoring payment. Many advertisers pre-pay for future ads, so monthly invoicing is minimal. Basic spreadsheet skills a bonus but training could be given. Around 7/10 hours over the month would be needed. Please contact Marilyn on Advertising@westcombesociety.org or 07939386215

NEIGHBOURHOOD

Keeping Our Neighbourhood Safe

At a recent meeting of the Safer Neighbourhood Panel, there was a discussion on anti-social behaviour. Greenwich Council's Community Safety Enforcement Officer highlighted ways of reporting anti-social behaviour that both residents and businesses can use. Designated offences include:

- Committing, or being likely to commit, alcohol-related anti-social behaviour.
- Injecting or smoking any substance capable of stimulating or suppressing the central nervous system.
- Discharging or throwing fireworks in an anti-social manner.
- Behaving in an anti-social manner within a public place such as a car park.
- Allowing a dog under your control to act in the following ways: fouling in a public place; being off-lead on a public highway or in a town centre; or entering a children's play area or other dog exclusion zones.

These and other anti-social behaviours can be reported via a QR code link, which provides the Community Safety Team with valuable data that can be acted on. The Safer Neighbourhood Police can also be contacted as follows: Main office: 020 8721 2635 or 07920 233828 Email: Blackheath.westcombe.SNT@met.police.uk

As always, it is stressed that any urgent or serious offence should be reported directly to the Police via 101 or 999.

Shoplifting – has become, in common with many areas, a serious issue for some of our local businesses and the Panel now has a number of local shop owners as members. They are liaising with the Safer Neighbourhood Police and co-operating as a group to try and combat this kind of crime which threatens their livelihoods and the valuable service they provide to local residents.

Begging – It was noted that street begging has returned. It was suggested that a reliable way to help the homeless is by donating money to trusted charities, where the money will be put to good use.

Geoff Brighty

ASB Virtual Diary Log



Slipping and Sliding on Halstow Road?

Do you find it difficult to walk up and down the steep part of Halstow Road where it crosses the railway? Would a handrail help?



Halstow Road with Railings

Back in 2014, there were railings on both sides of the road. Since their removal, some people have struggled to walk up and down the



Halstow Road without Railings

hill, especially in icy or wet weather. We are trying to get some form of handrail reinstated, but we need to show that local people care about it. If you're one of those who think a handrail would help, please contact the Westcombe Society Environment Committee – see contact details on page 2

Drinking Fountain

For the many years I have lived in the neighbourhood I have only ever known the green around the corner as “Blackheath Standard” with this being the name used by all the bus services.



Nor have I ever had a good look at the Victorian drinking fountain that stands at its corner with benches and the long-closed public conveniences. Unlike other fountains in the Blackheath area I could find no photos on the internet nor any mention in the meticulous local histories written by the late Neil Rhind. I decided yesterday to look more closely at the fountain and to

decipher, with some difficulty, the inscription:

Erected by Public Subscription
May 1889
Rev. J. W. Marshall
Chairman of Committee
W. Fox Batley
Hon. Secretary

The Rev. John William Marshall 1836-1915 was the vicar of St. John the Evangelist in St. John's Park for as long as 34 years from 1875 until 1909. Sadly his young daughter Elsie was killed in 1895 as a missionary in China by a strange sect. The small church hall on the corner of St. John's Park and Vicarage Avenue was dedicated to her. For many years in the more recent past it has been used as a polling station and now for children's activities. William Fox Batley was a corn merchant who lived in 190 Westcombe Hill Road between the old Barclays Bank and the shops (housing a dentist surgery from as early as 1909 until today). It was he who tidied up and enclosed the rough area in front of his house as a small park. It was known as Batley Green and on some maps as Batley Park but this has now been mostly forgotten and is today known as the Blackheath Standard green.

Malcolm Scott Hardy

Midsummer Magic

Midsummer Magic at the Greenwich Waldorf School – 22 June 2025. You're invited to a day of midsummer mischief and creativity at the Greenwich Waldorf School Summer Fair, taking place on Sunday 22 June 2025 at 90 Mycenae Road.

This year's fairy-themed celebration promises fun for the whole family, with games, crafts, live music, face-painting, Maypole dancing, home-made treats, a pre-loved book and clothing sale, and an art and craft market for all ages.

The woodlands behind Mycenae House will be transformed into an Enchanted Walk, featuring a fairy trail art installation created by pupils and local artists. Visitors can also catch The Fig Tree, an original puppet show by Elena Butterfield – a magical midsummer tale of courage, wonder, and woodland enchantment.

The school is celebrating 25 years of



engaging children from Greenwich and beyond in an all-through creative, holistic and academically rigorous Waldorf education. The Summer Fair is also an Open Day, offering a chance to explore the grounds, learn more about the school's ethos, and meet the vibrant community.

Children (and adults!) are welcome to come dressed as forest creatures, fairies, or make-believe beings. Tickets are just £1 via greenwich-waldorfschool.com or on the day. Market stall pitches are still available for artists, crafters and local businesses – contact Dani on 07950 381811.

For general enquiries, email admin@greenwichwaldorfschool.com or call 020 8858 4404.

PSYCHOTHERAPY

For all your emotional and cognitive needs.

Psychotherapist with over 30 years experience in trauma, neurodiversity, depression, anxiety, nightmares, abuse.

I work with adults, teenagers, couples and families.
Based in SE4

email: secchitherapy@gmail.com
07957563320

MZW

MONGILLO CONSTRUCTION WORKSHOP
DESIGN STUDIO - LONDON - BLACKHEATH
ARCHITECTURAL SERVICES

- Planning Applications
- Interior design
- Extensions
- New build
- Commercial design
- Design Advice
- BIM consultancy

contact@mongillocw.com
https://www.mongillo.co.uk/
T + 02034881570

FANAR SECURITY

BASED IN GREENWICH, SERVING CLIENTS IN BLACKHEATH, GREENWICH AND BEYOND

Intruder Alarms and CCTV

Affordable security services for your home and commercial property by a local security engineer with 30 years' experience.

CALL OR EMAIL FOR A FREE NO-OBLIGATION QUOTE

- ✓ INTRUDER ALARMS
- ✓ CCTV
- ✓ ENTRY SYSTEMS
- ✓ REPAIRS & TAKE OVERS

info@fanarsecurity.com || 07879011792
DBS CHECKED

FEATURES

Local Wonder Woman Wins Top Award

Remember our story in the December 2023 issue about Westcombe Park stunt woman extraordinaire, Lucy Johnson? The local gal with nerves of steel who loves being thrown down stairs, Awards. The award was for her work in *The First Omen* in which she jumps from a 9-metre platform, free falling and smashing through a window, all whilst on fire. Look it up on the web ... if you dare!



slammed against walls and set on fire ... all in a day's work? Lucy is now the toast of Hollywood having recently won Best Overall Stunt by a Stunt Woman at the 2025 prestigious Taurus World Stunt Awards. Lucy was quick to say it was a "huge team effort" keeping her safe during this bone-chilling stunt.

Our Local Wonder Woman - Lucy Johnson
Photo Credit: STUNT CONTACT

Diane Blackwell

Code of Conduct for Cyclists in Royal Parks

As the Westcombe Society representative on the Safer Parks Panel, I know how regularly the issue of unauthorised and inconsiderate cycling, by a small number of cyclists, was discussed. Now a survey has revealed the extent of public concern and that, combined with a number of recent incidents involving pedestrians and cyclists, have culminated in a Considerate Cycling Campaign. The code of conduct, soon to be posted in all Royal Parks, asks cyclists to:

- Respect the park environment
- Respect all park visitors
- Control their speed
- Know the rules - comply with the Highway Code and Park Regulations

- Be seen and be heard

Introducing the Code of Conduct, Darren Share, Director of Parks, states, "*The safety of all visitors is our top priority. By encouraging cyclists to slow down, respect the park environment and be considerate of others, we hope to foster a culture of respect and a safer, more enjoyable experience for all park visitors whether on two feet or two wheels.*" What is not yet clear, with the imminent disbanding of the dedicated Parks police, is how this will be monitored and by whom. But it is a very welcome initiative which we hope will curtail inconsiderate cycling by a few individuals.

Maggie Gravelle

The 2025 London Marathon



The most popular marathon in the world also became the biggest, this year, with over 56,640 runners – almost all of whom finished. The Elite Men's winner was

Sabastian Sawe in a mere 2 hours and 2 minutes. The Elite Woman's winner was Tigst Assefa who finished in 2 hours 15 minutes – a new women-only marathon record. The wheelchair races were both won by Swiss athletes – Marcel Hug and Catherine Debrunner. But the real winners were the charities that benefitted at a time when charities are really struggling. The London Marathon has raised over £1.3 billion. Among those benefitting this year were the Greenwich and Bexley Hospice, and Martin House, Harrogate, which provides a home for young people with life-limiting illnesses. Yes, runners came from far and wide.

Neville Grant

The Shooter's Hill Murders

Shooter's Hill takes its name not from gun crime, but from the practice of archery during the Middle Ages. However, in the past it had a reputation for highwaymen and was notorious for its gibbets of executed criminals. The diary of Samuel Pepys, on 11 April 1661 mentions passing a 'man that hangs upon Shooter's Hill and a filthy sight it was to see how his flesh is shrunk to his bones.' Gibbet Field is now part of the local golf course.

Today the area is one of pastoral peace, with wonderful wooded walks, and of course Severndroog Castle which provides amazing views of London from its tower.

It was not ever thus... In 1573 Arthur Golding, a clergyman responsible for ministering to the accused in prison, published A Briefe Discourse of the Late Murther of Master George Saunders. On 24 March, an army captain named George Brown received 'secret intelligence' that George Saunders, a London merchant, would be staying in Woolwich for a night in the house of a friend named Barnes. The next morning, near Shooters Hill, Brown attacked and killed Saunders, and fatally wounded one of Mr Barnes' servants, John Beane. Before he died, Beane identified Brown as the killer.

The conspirators were George's wife, Anne Saunders; Captain Brown, who was in love with her; a friend of Anne's, a widow named Anne Drury, and Drury's servant, Roger Clement. They were all hanged before a great 'concourse of people'.

Before her execution, Anne Saunders was taken to Newgate Prison, accompanied by a suspended minister, named George Mell. He fell in love with her and, convinced of her innocence, tried to persuade Anne Drury 'to take the whole guilt vpon herselfe.' He tried to get a pardon for Anne Saunders, but the Privy Council knew he wanted to marry her, and refused to pardon her. They also publicly punished Mell; he was made to stand on a pillory with holes securing his head and hands and pinned to his breasts was a piece of paper stating: FOR PRACTISING TO COLOUR THE DETESTABLE FACTS OF GEORGE SAUNDERS WIFE.

Neville Grant

Footnote:
The Met reported that in February 2025, in an area between Plumstead Common Road and Shooter's Hill, 88 crimes were reported: 35 involved violence or sexual offences; 14 anti-social behaviour; theft – 8; all other crimes 31.
Source: www.police.uk



St Olave's Prep School



Contact us for further information or to arrange a tour

“ The quality of the pupils' academic and other achievements is excellent ”
ISI Inspection Report

www.stolaves.org.uk. Call 020 8294 8930



The Pointer School

Part of  Dukes Education Family

A leading London prep school for girls & boys 3-11 in Blackheath, SE London. Founded in 1950

“...our wonderful teachers and Head Teacher, Mrs Crookes. With patience, good humour, and just a little craziness, they have coaxed and inspired us to achieve things we would not have thought possible!”

Head: Charlotte Crookes

☎ 0208 293 1331 @pointers.school @pointerschool

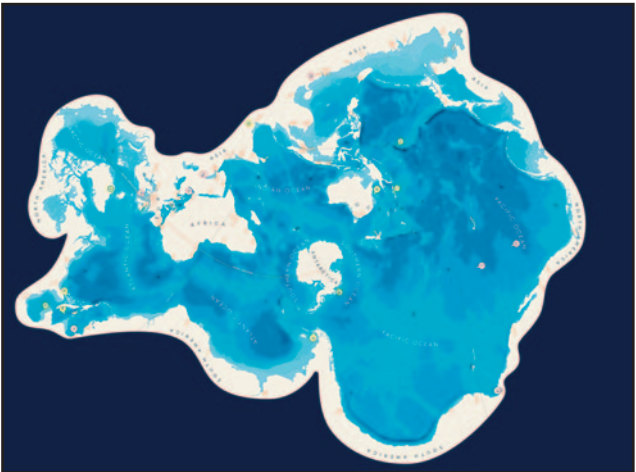
FEATURES

National Maritime Museum Unveils New Ocean Court

The National Maritime Museum will reopen Ocean Court, the central area under the glass roof, on Saturday 7 June to celebrate World Ocean Day.

The ocean connects all the galleries at the National Maritime Museum. It's a very exciting change at the National Maritime Museum; for the first time they will have a permanent space dedicated to the Ocean itself, not just humanity's relationship with, on or across the 'Seven Seas'.

The major change is the new floor map. The familiar Great Map will be replaced with the Ocean Map, a 440 m2 Spilhaus projection that shows the world with one interconnected Ocean. As well as offering a new way of looking at the world, it will also engage visitors by showing the depth of the Ocean floor, significant landmarks, ports and animals.



Ocean Map Photo: Maritime Museum

Milford Haven in Wales on 15 February 1996, spilling over 70,000 tons of crude oil. It was estimated that a third of Common Scoter ducks died and the local population of starfish fell by 97.5%.

The binnacle from Greenpeace's first ship, the Rainbow Warrior will also go on display. A binnacle holds navigational instruments on a ship. The Rainbow Warrior was a trawler purchased by Greenpeace in 1978 and was bombed by French agents in Auckland Harbour on 10 July 1985, sinking the ship ahead of a protest against nuclear testing in Moruroa.

A new hand-painted mural designed by award-winning illustrator Yehrin Tong will evoke the movements of deep-sea currents through a swirling wave pattern that builds to a crescendo as visitors move to the new Ocean Map.



Handpainted Mural Photo: Maritime Museum

Tim May, Curator of Maps and Mobilities, said 'The world is 71% ocean, but you wouldn't know it from looking at a standard world map. What's great about the new Ocean Map is that it encourages us to consider the world from a different perspective, one which reclaims the importance of the ocean on which we all depend.'

Two new objects will highlight the impact humans can have on the oceans. A fragment of the MV Sea Empress's hull will serve as a stark reminder of the impact oil spills can have on the ocean environment. The MV Sea Empress ran aground off

The National Maritime Museum will host events across the summer to celebrate the importance of the ocean to our climate, our histories and our cultures. Highlights include the World Ocean Day Festival on 7 June, film screenings and object tours for Refugee Week (16-22 June) and Rhythm! – a series of performances by local and international dancers on 12 July. Ocean Court closed in March 2024 for refurbishment of the 25-year-old roof. More than 23,000 square feet of sun-protected glazing has been installed over the central courtyard of the Museum, preventing overheating in a warmer climate.

Letter

Tree poisoning 33 Mycenae Road

Unfortunately, my tree has been poisoned in Mycenae Road. I discovered 8 x 10 mm drill holes all 3.5 inches deep in the trunk whilst investigating the dying leaves on one side.

Police and Council Tree Protection Officer attended on Wednesday and believe access may have been gained from the rear, due to trampled weeds and available access. They are currently investigating the poisoning. If you have any CCTV or information on this crime, please inform the police.

The police reference number is - 01/7488655/25 via phone call to 101 alternatively direct message me.

Please share this information with your neighbours in Mycenae Road and Ruthin Road, perhaps other trees may be affected. Please be aware of your cats too if they show

signs of illness, it may be related.

I appreciate that nearby houses may be inconvenienced by the tree shade, and I will be working with the Tree Protection Officer to see if I can get planning permission to do a more substantial topping than usually permitted this December.

I have been advised by the police to not contact any neighbours directly so apologies if this is how you have learnt this news.

If you are impacted by this tree, please message me directly and I will setup a WhatsApp group so all interested parties' views are represented and as neighbours we can reach a civilised rather than criminal solution.

There are five nest boxes with blue tits in the tree and two drays with 5 squirrels, it is alive with nature.

Kind thoughts, Kind words, Kind heart, Namaste

Vincent

Greenwich Equestrian Centre

The Olympic Equestrian Centre, opened in 2013, is now closed and is likely to be sold.

This is a far cry from the promised 'legacy' in terms of local jobs and community opportunities, as well as state-of-the-art facilities, which the Centre was to provide. There had been some opposition to the proposal to host the Olympic events in Greenwich Park. No to Greenwich Park Olympic Equestrian Events (NOGOE) provided a vociferous argument about the damage it would do to the park and the closure of some areas. Nevertheless, the decision was taken to go ahead, citing as one of the benefits the new Equestrian Centre.

Funded by Sport England, the British Equestrian Foundation, and Greenwich Council among other organisations, it cost £16 million and was managed by Hadlow College to provide various equine courses. On its opening it was hailed by Just Horse Riders magazine, as 'a shining beacon of the 2012 London Olympics', featuring a hydrotherapy pool, a treadmill and excellent training facilities. One condition of the planning permission was the commitment to provide a minimum of 82 hours per week for local community riding.

But in 2024 Hadlow College entered into 'educational administration' and its courses were taken over by North Kent College which had no further use for the Greenwich facilities. There was a campaign run by a local businesswoman to take over what was described as a 'unique' provision which 'with its roots in the London 2012 legacy, is a testament to the power of sports to unite and inspire, offering our community a space to engage in equestrian activities and fostering a spirit of health and inclusivity.' (Horse and Hound). But the cash-strapped Council decided at a lively meeting earlier this year to sell the Centre and Green Garth, a nearby house.

Local opposition continues. Barry Gray of Woodlands Farm Trust, an immediate neighbour, would like to use the Centre to extend the facilities at the Farm and hold more craft activities and a farmers' market. Tao Baker, of the Save Greenwich Equestrian Centre group, argued that planning regulations only allowed for land to be sold under exceptional circumstances, of which financial difficulties was not one.

Meanwhile, the Borough website still has information about the courses on offer.

Maggie Gravelle

A & A LANDSCAPES
Landscape Specialists



Free advice & horticulturalist estimates

Qualified

All aspects of soft & hard landscaping work carried out including

- * Maintenance
- * Site clearance
- * Turfing
- * Tree surgery
- * Fencing
- * Patios
- * Brickwork

Tel. 020 8318 2530

R.G. Austin
(Established 1963)



Heating Engineers,
Property Maintenance,
Electrics, Painting,
Decorating, Plumbing,
Central Heating.



Shower and Bathroom Specialists

2A Hassendean Rd, Blackheath SE3 8TS

Telephone: 0208 858 7359

rgaustintd@gmail.com

Emergencies: 07738124344

email: rgaustintd@gmail.com

INVESTMENTS
PENSIONS
ESTATE PLANNING
STARKEY
FINANCIAL PLANNING

Contact us: 020 8853 7160
admin@starkeyfp.co.uk

2 Charlton Road, Blackheath Standard, London SE3 7EX

Independent and friendly advice from south east
London's top team of Chartered Financial Planners

Starkey Financial Planning Ltd is authorised and regulated by the Financial Conduct Authority



ENVIRONMENT

Environment Committee Report for the Westcombe Society AGM

The Environment Committee's role in the Westcombe Society is to look after our environment, both built and natural. Our remit includes planning, air quality, trees and open spaces, licensing, and traffic and transport. We meet monthly, this year once again entirely online, and have lively email discussions between meetings. We try to be responsive to comments and questions, and we are grateful to everyone who has contributed to our work. Road traffic and transport have been a leading concern this year. The implementation of the Low Traffic Neighbourhood (LTN) restrictions has not been painless, but it is cutting traffic and making walking and cycling more pleasant. In Westcombe Hill and other through roads, residents have mentioned the reduction in noise as a positive. We are, though, aware of the inconvenience for a number of people, including in neighbouring Charlton. We are directing residents to write to ward councillors and add their views to the Borough's own comments page. At the same time, we're watching the effects of the opening

of the Silvertown Tunnel, which could lead drivers to seek alternative routes to avoid paying tolls. The new tunnel has also meant a substantial new wall designed to alleviate some of the noise and air pollution from the A102 traffic. This can be seen at the bottom of Westcombe Hill and by the Siebert Road underpass. The Westcombe Society advocated for this at the Public Investigation hearings, and the inspectors made it a requirement. Behind the scenes, residents along the route have been working hard to make this the best it can be. There are still improvements to be made to the landscaping at Siebert Road and Westcombe Hill, and to the underpass itself. The committee looks closely at applications for tree work. Greenery and mature trees are an important part of the character of our area. Over the last year, we commented on a number of planning developments for building. The Royal Borough of Greenwich (RBG) Planning Department has clear advice on building and renovations in

conservation areas, and we comment on proposals where householders, developers, and utilities want to exceed the guidelines. We look at plans for redevelopment outside the immediate area, and respond to consultations with the Borough, which last year included changes to planning advice, cycle routes, and elements that will feed into the upcoming new Local Plan. The Environment Committee works collaboratively with a number of other organisations, and could not achieve what we do without being part of these networks. Locally, we send representatives to the Safer Neighbourhoods Panel, the Safer Parks Panel, the Greenwich Park Stakeholders, the Friends of Mycenae Gardens committee, the Greenwich Line Users' Group, and the Blackheath Joint Working Party. We communicate regularly with our ward councillors, and we appreciate their hard work and support. More widely, we help convene the Greenwich Planning Alliance, which brings together amenity societies across the borough for discussions with RBG

Planning Department officers helps coordinate responses to broader planning issues. One of our committee members also serves on the board of the London Forum, which aims to represent a large network of amenity societies across the city. Another element of our work is reviewing licensing and trade at the Royal Standard, where we've seen an increase in the hospitality sector. We look at signage, parking, and traffic issues, and hope to maintain a prosperous trading environment for all. The Environment Committee consists of volunteers, and we don't all have previous experience of planning or environmental issues. However, common sense is useful, and we also develop our expertise by drawing on our networks. We would welcome more members, to diversify the committee and broaden our awareness of your concerns. Protecting our environment is less work than you might think, but it is much needed to mitigate the impacts of climate change while keeping Westcombe Park attractive and a pleasure to live in.

Waste recycling results

In March, the Government published the recycling rates for household waste for local authorities in England for 2023/24. The national recycling average for local authorities was 44% in 2023/24, with a further 5.5% sent to landfill and 50% sent for incineration. Overall, London performs poorly compared to other regions in England with only 33% of waste sent for recycling, a rate that has stagnated for 10 years. The London recycling target is 50% for 2025, and 65% for 2030. The Greenwich recycling rate was 33% and was placed 13th out of 33 London Boroughs, up from 29% in 22/23. The best London Borough is

Bromley with 51% recycling rate and the worst is Tower Hamlets with only 16% recycling rate. London Boroughs are described as having collection services that should deliver high recycling rates. The main problem is that they are not being used optimally by householders. As a general rule, the more waste sent for recycling or composting the lower the overall costs. Good communication between Councils and householders is seen in the Report as essential for efficient household recycling. *Ann Hill* (<https://www.gov.uk/government/statistics/local-authority-collected-waste-management-annual-results>)

PAINTING & DECORATING

Interior/Exterior/
Experienced Reliable Clean
Fully Guaranteed/Insured.
References available.
Free no obligation quote
and advice given

JOHN at JAMES & LAMONT
Office 020 8462 4646
Mobile 07802 535695
jamlam.john@btinternet.com

Greenwich Park Deer

The deer have returned! Six female fallow deer and two males from an estate in Devon, were introduced to the deer enclosure. They seemed to be at home almost immediately.



EDUCATION REIMAGINED

Are you looking to ignite a lifelong love of learning in your child? Intellectual curiosity, creativity and confidence, along with critical thinking and a sense of purpose characterise our pupils.

Through our contemporary approach to Waldorf education, we pride ourselves on empowering children aged 3–18 for the future that awaits them.

WWW.GREENWICHWALDORFSCHOOL.COM

GREENWICH
Waldorf School

ARRANGE A SCHOOL TOUR TODAY
Call us to arrange a visit on 020 8858 4404 or email us admin@greenichwaldorfschool.com
Find us on Instagram @greenichwaldorfschool
90 Mycenae Road, London SE3 7SL

PLANNING APPLICATIONS*
www.westcombesociety.org

BROADBRIDGE HALL, BROADBRIDGE CLOSE
ref 25/0881/F
To extend and convert a single storey building within Broadbridge Close to provide 3 x two-bedroom apartments with associated amenity space and parking, and construct single storey rear extensions and rear dormers, side rooflights, PV panels and air source heat pumps.

26A HEATHWAY
ref 25/1310/HD To construct 2 double-storey infill extensions to front, and new staircase and balcony to rear, alterations to entrance gate and garage, and removal of trees.

* Please be advised that the planning applications noted here are based on information available at the time of print. For the latest updates, please visit our website www.westcombesociety.org

Lime Bikes

Plans for New Enforcement Measures and Designated Parking

Our ward councillors have been keeping us informed of the latest developments in discussions between the Council and Lime Bikes. They tell us that the Council is in the process of finalising a Memorandum of Understanding with the company. Part of this will involve regular patrols of the Operational Zones by Lime Bikes, with levies imposed for contravention of the Terms and Conditions. There will also be an 'enhanced fining regime' in Greenwich Town Centre, where users will be fined £10 for a first offence if cycles are not parked in designated bays. The Council say they have made 'good progress with the design and preparation of designated parking bays', which should be introduced by the end of May. We can therefore expect improvements in the enforcement of Lime Bikes regulations.

WHAT'S ON

Cutty Sark

No Direction Home: Stand-Up Comedy
27 June 2025
Age: Suitable for all ages
Admission: Starting at £7.50
To celebrate Refugee Week 2025, Cutty Sark will be hosting an evening of stand-up comedy with No Direction Home, a comedy collective produced by Counterpoints Arts featuring new stand-ups from refugee and migrant backgrounds.
Cutty Sark Rig Climb Experience
Dates: Fridays, Saturdays, and holidays between 23 May 2025 – 31 October 2025
Time: 10.00 – 16.00
Age: Suitable for ages 10 and over | Children under 18 must be accompanied by an adult
Admission: Adult £60 | Student £49 | Child from £55 | Includes entry to the ship
Climb the famous masts of Cutty Sark and experience a unique London adventure.
Visitors can climb the rigging of Cutty Sark to get a taste of what it would have been like to sail the historic ship.
Sea Shanty Singers
Dates: 7, 8 June 2025
Time: 11.45 | 12.45 | 13.30
Age: Suitable for all ages
Admission: Free with admission to the ship
Cutty Sark's resident sea shanty groups Swinging the Lead and The HogEye Men transform the famous tea clipper's 'Tween Deck with the harmonies of sea shanties, traditional working songs. Come along to hear this enduring maritime tradition brought to life.
<https://www.rmg.co.uk>

Royal Observatory

Chinese Astronomy
Date: 14 June 2025
Time: 10:30 – 11:15
Age: Suitable for ages 7 and over
Location: Royal Observatory Greenwich, Peter Harrison Planetarium
Admission: £10 Adult | £5 Child
This planetarium show will be a journey through space and time to explore the ancient history of Chinese astronomy. Visitors will travel to nearby celestial bodies like the Sun and Moon. They will learn how Chinese astronomers have looked up at the night sky for thousands of years and the amazing feats of exploration being made by modern day Chinese space missions. Their guide for this fantastic voyage will be an astronomer from the Royal Observatory Greenwich. Tickets will also include a visit to the historical Observatory and the Meridian Line.
Astronomy & Islam: The Sun
Date: 22 June 2025
Time: 10:30 – 11:15
Age: Suitable for ages 7 and over
Location: Royal Observatory Greenwich, Peter Harrison Planetarium
Admission: £10 Adult | £5 Child
www.rmg.co.uk/
This show will explore the relationship between Islam and our closest star. Visitors will discover how the Sun's position relates to the times and directions of Islamic prayer.

Blackheath Halls

1-6th June 5pm – Trinity Laban | 7 Days of New Music
2 Jun 1.10pm – Lunchtime Recital | The Waldstein Trio
4 Jun – FREE Opera Taster Sessions (5-6pm 9-18yrs / 7-8.30pm adults)
5 Jun 1.10pm – Lebendige Lieder | SongEasel Young Artist Platform
16 Jun 1.10pm – Lunchtime Recital | Tessa Uys
17-20 Jun 7pm/Sat 21 Jun 2.30pm – Grease the Musical
26 Jun 7.30pm – Book Talk | John Willis: The People's War
www.blackheathhalls.com/whats-on/

Mycenae House

Wed 4th June 2.15pm - Zentangle Workshop. Mindful drawing to reduce stress and improve focus. £5.
Sat 7th June 1.30pm - Glitter & Festival Make-Up Class. An intro to creating amazing designs for festivals & events. £130.
Tues 17th June 7pm - Gong Bath. Journey through meditation and sound, a chance to release, relax & let go. £18.
Thurs 19th June 4pm - Bach to Baby concert. Classical Concert for families. £16.
Fri 20th June 7.30pm - The SWOP Sessions. Foot tapping, finger snapping, jazz, soul & blues with Open Mic. £8.
Fri 20th June 7.30pm - Drumming Circle. Experience the power of gathering in circle & connect through the ancient beat of the drum. £15.
Visit: www.mycenaehouse.co.uk

Sitopia Farm

Throughout June: Seasonal farm-fresh flowers! We are now able to welcome new subscribers to our flower subscription scheme. Treat yourself (or a lucky giftee) to a beautiful bouquet of flowers on a weekly or fortnightly basis. 100% grown, harvested and arranged by us. Delivered to your door or to a number of pick-up points including Blackheath. From £25 per bouquet.
Saturday 14th June: One-Day food and flower growing course. Come join us for a day of learning from our experienced team at Sitopia Farm about organic, no-dig growing whether on your balcony, garden or allotment. Your ticket includes a whole day of tuition, two course seasonal farm lunch, a goody bag of fresh produce and a bouquet of flowers to take home with you! £180. Free places available for those on low incomes. Tickets are limited and are available to book in advance online, any questions please mail hello@sitopiafarm.com
Saturday 21st June: Pop-up farm shop and open day. 10-2pm, 331 Shooters Hill, London, Welling DA16 3RP. Come join us at Midsummer and buy our delicious, certified organic vegetables, salads, fruits, herbs, and flowers, and take a walk around our farm (free of charge) to see what and how we're growing. Pop-ups run on the third Saturday of each month Spring-Autumn.
All details on our website www.sitopiafarm.com. You can also sign up for our newsletter via our home page.

National Maritime Museum and Queen's House

The Keeper of All the Secrets
Date: Daily
Time: 10.00 – 17.00
Age: Suitable for all ages
Location: Queen's House, Greenwich
Admission: Free
www.rmg.co.uk/queens-house
Jacqueline Bishop's The Keeper of All the Secrets is a major new acquisition that is on display in the Queen's House. (2024-2025).
SPECIAL EVENTS
World Ocean Day
Date: 7 June 2025
Time: 10.00 – 17.00
Age: Suitable for all ages
An annual family festival celebrating the ocean and exploring the impact humans have upon it.
Windrush Day
Date: 21 June 2025
Time: 10.00 – 17.00
Age: Suitable for all ages
A day-long event to explore the impact of the Windrush Generation. The day will include a series of talks at the National Maritime Museum, spoken-word performances by Caribbean elders, a singing workshop with Ethno Vox and a boat-crafting workshop.
Refugee Week
Date: 10 June 2025
Time: 10.00 – 17.00
Age: Suitable for all ages
Community as a Superpower
A free art display at the National Maritime Museum to mark Refugee Week centred around the theme 'Community as a Superpower'. The artwork will be created by ESOL students from Lewisham College who have experienced migration.
Maritime Migration: Film Screenings and Panel Discussion
Date: 13 June 2025
Time: 18.00 – 20:30
Age: Suitable for ages 18 and over
Opening with a drinks reception, this event includes a screening of the documentary 'Liquid Traces – The Left to Die Boat Case' (2014) as well as a selection of animated short films made by the non-profit organisation PositiveNegatives. This will be followed by a panel discussion about migration with the participation of Benjamin Worku-Dix (Founding Director of PositiveNegatives), and the artists Shorsh Saleh and Güler Ateş.
All the above events are located in the National Maritime Museum and Admission is Free.
For further details www.rmg.co.uk

The Royal Standard Pub

Saturday 28th and Sunday 29th June
Blackheath Creatives Vintage Trail
Books Vintage Interiors Clothes jewellery furniture live music history trails local shops
Enjoy the vintage trail as you stroll around Blackheath and Blackheath Royal Standard
Saturday night Laurence O'n the Blistered Mirrors will be playing from 7pm
44 Vanbrugh Park
Blackheath SE3 7JQ

The Arts Society Greenwich

www.theartsocietygreenwich.org.uk



Masterworks of 20th Century Photography
Monday 9 June 2025 at 7.30 pm
Lecturer: Barry Venning
Venue: James Wolfe Primary School, Royal Hill, Greenwich
Guests very welcome: £10
In the nineteenth century, photography struggled for recognition as an artistic medium on a par with painting and photography, but through its instantaneity, its potential for mass reproduction and its sheer versatility, it became the dominant visual medium of the early twentieth century. This lecture considers a range of great images produced since 1900, by photographers as diverse as Cartier-Bresson, Weegee, Robert Capa, Garry Winogrand and Edward Burtynsky. *Barry Venning is an art historian whose interests and teaching range from the art of late medieval Europe to global contemporary art. He has published books, articles and exhibition catalogue essays on Turner, Constable and European landscape painting, but also has an ongoing research interest in postcolonial art and British visual satire.*
www.theartsocietygreenwich.org.uk

West Greenwich Library

June 24 at West Greenwich Library.
But onwards to the next in-words reading, last before the summer break: Do save the date for the 'Telltale Poets' - Robin Houghton, Peter Kenny and Sarah Barnsley. Not many groups can boast the patronage of Carol Ann Duffy, but Telltale can! **Go to in-words.co.uk to read all about them.**



The Magic Flute 20-22 June 2025
W.A. Mozart's beloved opera The Magic Flute will be brought to life with a fresh and imaginative interpretation tackling themes of love, adventure and the fight for universal balance. The Magic Flute will be sung in German with English text and English surtitles.
The Three Musketeers
24th Jul-24th Aug 2025
Follows the fortunes of d'Artagnan as he leaves home with the hope of joining the Musketeers of the Guard. This fantastic swashbuckling adventure features an unforgettable cast of characters including the evil Cardinal Richelieu and of course the musketeers themselves!
Contact - boxoffice@greenchtheatre.org.uk for further details and to book

MARKET PLACE

WANTED

REGULAR WEEKLY DOMESTIC CLEANER for 3 bed 3 bath home on Ulundi Road (4 person family). Contact Ellie on 07717660485

THERAPIST

LOCALLY BASED individual CBT therapist and couples therapist working online and in person at Mycenae House. Book 15 min phone consultation by calling 07889755299 or email hello@Sasha-Louise.com. Visit my website www.Sasha-Louise.com

TUITION

HOME SUPPORT AND TRAINING FOR YOUR DIGITAL DEVICES
Need some help with computers, phones and tablets? I'm a DBS checked IT trainer with 21 years experience, friendly and patient. £45/hour (£20 call out), discounted for block bookings.
To discuss options, call Paul on 07985 643506 or email paul.clayton@soulchip.co.uk
VINTAGE TOYS wanted by collector, Corgi, Dinky, Matchbox, Action Man, Star Wars, Britains, Hornby, soldiers etc. tel 07775656958.
GERMAN TUITION, language and literature, in person, local German teacher. All levels and ages, DBS checked. Please contact Dr Katharina Rist at 07533 061757 or rist@ristconsulting.com
SPANISH TUITION, on line, latinoamerican Spanish teacher. All levels and ages, GCSE, A levels. Please contact: Miguel at 07910318513 or migansiergut52@gmail.com
MATHS & ENGLISH TUITION TO GCSE AND PREPARATION FOR 11+ AND INDEPENDENT SCHOOL SELECTION TESTS by qualified and experienced teacher. marystuition.com
Mary Bauckham 07709 089 838 marybauckham@gmail.com
MATHS TUITION
Qualified and experienced secondary teacher offers tuition to GCSE level.
Call Miv Whitaker: 07745 816338; or email miv.whitaker@gmail.com

SERVICES & TRADE

DV SERVICES PLUMBING & HANDYMAN Blockages & drains, Radiator valves and radiators not working, Change and fix toilets, sinks, showers & taps in bathrooms, toilets and kitchens. We can fix it!
Call Daniel on: 07904 880 448
SPRING INTO SUMMER with garden maintenance by professional woman gardener. 0208 858 8139
FULLY INSURED & QUALIFIED CARPENTER
joiner & general building work/ specialist in traditionally handmade timber double glazed sash windows & doors/retrofit double glazing & vacuum insulated glass/ listed and heritage building work undertaken.
Tel: 020 3375 8597
Mob: 07930 453 310
Email: joseph@mcnamarabuildinganddevelopment.co.uk
UPHOLSTERER
Specialising in traditional upholstery. www.suemayesupholstery.net or phone 07932 040 298

VANBRUGH DOG WALKING.
Insured, DBS checked, business references. £15 per hour for one dog; other prices on request. Please email: vanbrughdogwalking@hotmail.com
PEST CONTROL SERVICES
Mice, Rats, Squirrels, Wasps, Foxes etc. Local Service
07850 839 655

A MAN AND A VAN

Tel: 020 8858 3889

Mobile: 07885 917842

T.TA ELECTRICS. NICEIC

Approved Contractor, Quality Tradesman. All electrical work undertaken, Fully Insured & Guaranteed.

24HR EMERGENCY ELECTRICAL.

Please call Tony on 07961 509 403

OR 020 8488 7425 OR

info@ttaelectrics.co.uk

HOMEWORKS All-round

handyman for those DIY's you have no time for! General repairs. Painting & Decorating. General Carpentry and flooring. Flat-pack assembly. Patio and deck cleaning. No job too small.

Contact Matthew Barron

07903 388658

ELECTRICIAN / ALARM & CCTV ENGINEER

30+ years' experience – No job too small

Call: 07879 011792

WESTCOMBE CLEANERS

I'm a friendly, hard-working & organised domestic cleaner. Regular or single services. Competitive rates. Additional tasks. I love my clients to be happy. Phone 07746 291617
MARK CHEESEMAM, LOCAL CARPENTER AND JOINER WITH OVER 30 YEARS EXPERIENCE.

All Aspects Of Carpentry and Construction Executed Considerately and to a High Standard. Both Traditional and Contemporary Design Joinery - Cupboards, Window seats, Floating Shelves, Engineered Flooring Fitted Etc. Also Locks Changed. Sash Window Overhaul. If you have Rotten Window Sills, Door Frames Etc. rather than replace them with the associated upheaval and expense, why not have a Timber/Resin Repair?

Please Call Mark on 07767 456131 or H: 020 8854 4028.

ANGELO, ELECTRICIAN

No Job Too Small

T - 020 87616012/

M - 07850 767 283

Email - angelo@glennies.net

Part P Certificated

18th Edition & JIB Registered

LOCAL CARPET CLEANER

Specialist in cleaning Carpets,

Upholstery & Rugs.

www.carpetcrow.co.uk

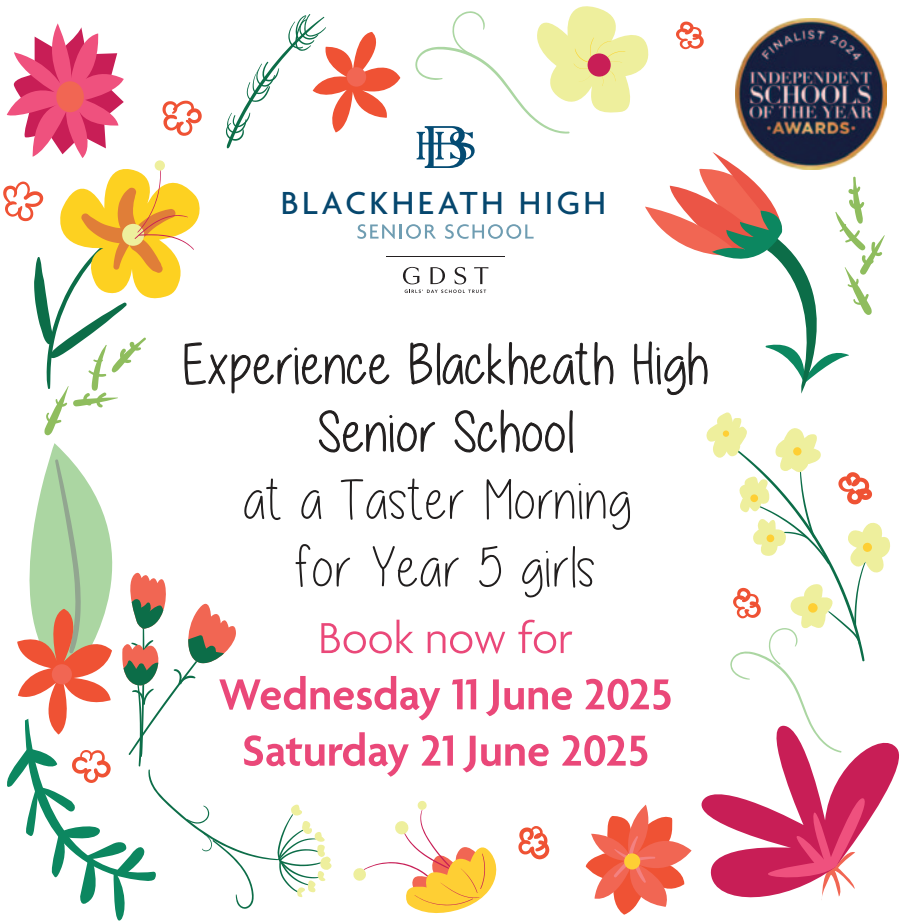
Phone 07828503132

AMANDA ARTHUR

Local gardener, mowing, pruning, planting, clearing, general garden maintenance based SE3
Call 07976 899760.

CAKES

HOME MADE: Personalised BIRTHDAY CAKES AND CUPCAKES, Banana Cake and Muffins etc. Lunches: Hot meals, Pastries and Baguettes etc .
Made with ♥ Love!
Menus are available.
Call : 07904 880 448



Experience Blackheath High Senior School at a Taster Morning for Year 5 girls

Book now for
Wednesday 11 June 2025
Saturday 21 June 2025

DISCOUNT!

(When you show your Westcombe Society membership card)

ALL CITY LOCKSMITHS LTD

offer upto a 15% discount for local residents

ROYAL NEPALESE

RESTAURANT (Station Crescent)

20% OFF meals for two or more
Sunday - Thursday.

COTON & HAMBLIN LENS CLUB-

Complimentary standard coated single vision lenses worth £50 when purchasing complete spectacles.

T's & C's apply.

BLACKHEATH EYECARE OPTICIANS

Money-saving Eyeplan membership offered

TROJAN PRESS 10% OFF all quotations

WESTCOMBE DRY CLEANERS

10% discount on Dry Cleaning.

Cannot be used in conjunction with any other offers.

A * DRIVING SCHOOL

£5 discount on the price of one x 2 hour lesson

KAREN STOREY OF

HOMESPACE offers members 10% discount on decluttering & homestaging: 07951 191086

SHENDA FALVEY PERSONAL TRAINING, STOTT PILATES & BOOTCAMP

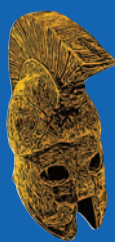
M: 07887727335

E: shenda@shendafalvey personaltraining.co.uk

Free Bootcamp worth £12.50

Free PT/ Pilates Consultation with

20% off first session



TROJAN PRESS

PRINTING IN BLACKHEATH FOR YOU SINCE 1978

1a Lizban St, Blackheath, London SE3 8SS

Tel: 020 8853 2268

Email: info@trojanpress.co.uk

www.trojanpress.com



BICKLEY PARK SCHOOL

INDEPENDENT PREP SCHOOL FOR BOYS & GIRLS AGED 2½-13



Be All You Can Be

Weekly Tours
Come and Visit

Now Co-ed!

Find out more here:



14 & 24 Page Heath Lane, Bickley, Bromley, Kent BR1 2DS
www.bickleyparkschool.co.uk