

WestcombeNEWS



Free to 3800 homes, in libraries and shops and online

Dec/Jan 2024 No 10

Season's Greetings to all our Readers

More Trains from December

In some good news for rail travellers a ten-minute service frequency is being re-introduced at Westcombe Park and Maze Hill stations from December, although only at peak times Mondays to Fridays. Nevertheless, it is a further welcome improvement towards restoring the pre-Covid timetable on the railway. A daytime frequency of a service every ten minutes was first introduced in December 2009, and this level of service was enjoyed until 2020 when it was cut during the

stability and increasing usage. Maze Hill is nearly back to its pre-Covid usage level, but Westcombe Park is still some way from that. A more reliable and frequent level of services may encourage more people to use the train.

In the longer term Southeastern have other improvements they wish to make. The ticket machines are over thirty years old, use old technology and do not meet modern standards. They are going to be replaced with machines which will offer a wider range of tickets.



Covid pandemic. It has never been fully restored.

A regular and reliable train service attracts commuters and leisure travellers, and builds confidence in using the railway. Between 2009/10 and 2019/2020 (the last pre-Covid period) usage of Westcombe Park station increased by 31% and Maze Hill by 70% (source: ORR estimates of station usage). Whilst other factors, such as new housing, contributed to this, the effect of a frequent rail service cannot be ignored.

Changes during Covid were understandable, but since then, the train timetable has been unsettled. A peak period ten-minute frequency was re-introduced in January 2022 but was withdrawn again in December 2022. After that, there were gaps of up to 23 minutes between trains and reliability deteriorated. The nadir was reached on 24 January 2023, when only five trains into London were on time in the whole day.

On behalf of all rail users, the Greenwich Line Users Group has made strong representations to Southeastern about the restoration of train services. The situation has improved, with 88.3% of services on the Greenwich line arriving within three minutes of time. The June 2024 timetable was a step in the right direction with a more regular pattern of services. With a peak hour ten-minute frequency from December, it is to be hoped that we are entering a period of

On the trains themselves, toilets are going to be installed in the City Beam trains, the Electrostars will be refurbished, and five companies have been shortlisted to provide a new Metro fleet.

*Mike Sparham
Convenor, Greenwich Line Users Group.*

(greenwichline@outlook.com)
Note: The new timetable begins on 15th December 2024. On Mondays to Fridays, trains into London will run every ten minutes from 07.11 to 10.11 and from 15.41 to 20.41 (Westcombe Park); and trains from London Bridge will run every ten minutes from 06.48 to 08.48 and from 15.48 to 19.18. At other times, there are four trains an hour.



WOODLANDS FARM Christmas Fair

Sunday 1st December 2024
11:00 – 15:00
331 SHOOTERS HILL, WELLING, DA16 3RP

Join us for a festive day of fun, including....

- Meet Father Christmas
- Hot Food stalls
- Crafts Stalls
- Children's Activities
- Mulled Wine and Cider
- Café with homemade cakes

FREE ENTRY

@woodlandsfarmtrust Woodlands Farm Shooters Hill

NO PARKING, PLEASE USE PUBLIC TRANSPORT. BUSES BY AND A86 STOP OUTSIDE.
DOGS ON LEADS PERMITTED FOR THIS EVENT.



Greenwich Park Revealed

The Final Stages

The final phase of landscape works for Greenwich Park Revealed will be taking place in the latter stages of 2024 and is made up of four key projects.

Western Parterre tree work

Work is taking place on the final phase of a restoration of Greenwich Park's historic tree avenues. Planting healthy, semi-mature trees will secure healthy tree avenues for the future. Elm trees will be introduced, the original tree species of the 17th century landscape. There may be short-term, temporary closures which will be kept to a minimum and alternative routes will be available. Works are due to last 2-3 weeks. Tree planting of more resilient species will take place in December 2024.



General Wolfe statue resurfacing

The work to resurface the pathway at the top of Castle Hill Path in between the General Wolfe statue and the Royal Observatory is now complete.

Grand Ascent tree relocation

The Hawthorn trees on the Grand Ascent have not flourished as initially hoped. As a result, the trees will be moved from the edges of the

Grand Ascent to a landscape that will be more suitable for them and will encourage them to thrive. The relocation is due to last five days and complete by the end of 2024.

Grand Ascent irrigation

A hosepipe irrigation system will be installed into the hedgerow flanks on the northern side of the Grand Ascent. This will use an existing bore hole water connection and provide a watering point for trees and grassland making it easier to maintain this expertly restored historic landscape. The work is due to last approximately two weeks and will be completed by the end of 2024



All of these projects will be completed by the end of the year. Closures will be kept to a minimum and messaging will be shared across digital and in-park platforms. There will be signage in place to clearly mark closures.

2025 will see the deer return and the installation of the new coffee kiosk by the General Wolfe statue.

The Magic of Mycenae

Celebrate the Season with us!

- 6 Dec Citizens of the World Choir
- 13 Dec SWOP
- 16 Dec Choral Christmas w St Georges
- 17 Dec Baby Broadway
- 18 Dec Her Voice w full line up of artists
- 20 Dec Bach to Baby
- 20 Dec The Kimberleys at Christmas

0208 858 1749 www.mycenaehouse.co.uk



WESTCOMBE SOCIETY

Westcombe News

PUBLISHER

The Westcombe Society
c/o 163 Westcombe Hill, SE3 7DP or
info@westcombesociety.org

CHAIR: Geoff Brighty

EDITOR: Christine Fells

EDITORIAL TEAM / CONTRIBUTORS

Marilyn Little
Polly Morgan
Amanda Arthur
Helen Marley-Hutchinson
Anne Robbins
Ann Hill
Diane Blackwell

ALL EDITORIAL
CORRESPONDENCE/PRESS
MATERIAL TO BE SENT TO:
wnews@westcombesociety.org
Deadline for Feb copy
17th January 2025

SUB EDITOR
Annie Grey

ENVIRONMENT
Editor: Maggie Gravelle
All comments and queries to
Emily Norton: 0208 853 2756

ADVERTISING MANAGER
Marilyn Little
advertising@westcombesociety.org
Deadline for Feb Advertising:
20th January 2025

DISTRIBUTION
Emily Norton and volunteers
Tel: 0208 853 2756

PRINTING
Trojan Press.
Email: dave@trojanpress.co.uk
www.trojanpress.com

The views expressed in the
Westcombe News are not necessarily
those of the Westcombe Society or
of the Editor. We take all reasonable
precautions to protect the interests of
our readers by ensuring as far as
possible the bona fides of our
advertisers but cannot accept any
responsibility for them. Any com-
plaints should be addressed to the
advertiser.

To access back numbers (in colour)
go to:
[http://www.westcombesociety.org/
westcombenews](http://www.westcombesociety.org/westcombenews)

Westcombe Society Membership

We would be delighted to receive
your support and annual
membership subscription.

Family membership £15
Individual membership £12
Senior Citizens and Unwaged £6

Please send payment to:
Christine Legg, 69 Mycenae
Road, London, SE3 7SE
or email:
membership@westcombesociety.org

Advertising Rates

SIZE	Per Issue Cost	5 Issue Discounted Cost
Standard 6cm x 6cm (one column wide)	£48	£220
2 x standard (horizontal or vertical)	£76	£350
3 x standard	£107	£485
4 x standard	£138	£620

Newsbriefs



Charlton House Declared 'At Risk' by Historic England

Charlton House, a Jacobean mansion built in 1607, has been added to Historic England's Heritage at Risk Register due to its deteriorating condition, particularly a leaky roof requiring £2 million in repairs. Managed by the Royal Greenwich Heritage Trust since 2014, the Grade I-listed building remains a vital community hub and historical treasure.

Trust CEO Janet Denne welcomed the designation, expressing hopes it will unlock funding and expertise to secure the house's future. Emergency roof repairs have kept the main rooms functional, with further restoration planned, including stonework, electrics, and the grand

staircase.

Charlton House joins 599 other at-risk sites in London, highlighting challenges in preserving heritage buildings.

Charlton Toy Library Secures New Home Near Charlton House

Charlton Toy Library has found a new base at Langthorne House, Springfield Estate, after leaving Charlton House, its home of over 40 years. The charity, which lends toys and baby equipment to families and offers stay-and-play sessions, planned to relocate on the 20th November.

The move follows a decision by the Royal Greenwich Heritage Trust to lease the space to a commercial tenant to fund maintenance of Charlton House. The new premises, supported by Charlton Triangle Homes, ensure the library stays close to its community.

Chair John Stephen called the relocation "an exciting new chapter," while the council and trust praised the charity's value to local families.

Letter

Low Traffic Neighbourhood (LTN) scheme in West/East Greenwich

Recent editions of the Westcombe News have highlighted the Council's plan to introduce a Low Traffic Neighbourhood (LTN) scheme in West/East Greenwich. Previous writers have referred to the problems associated with this scheme e.g. poor consultation, implementing the trial without local support (70%+ of consultees oppose the scheme), potential increased traffic on boundary roads, the impact on the disabled and the potential for poorer air quality. Past schemes have shown an increase in idling traffic, leading to increases in toxic emissions.

There is huge concern in the Charlton area about the impact this scheme will have on us, something barely considered by the council in their baseline assessments. It was only the 'Call in Meeting' in July that forced the council to consider additional baseline measures on traffic and air quality. In September, members of Charlton Central Residents' Association (CCRA) wrote to Councillor Averil Lekau (Deputy Leader/Cabinet

Member for Transport), asking for information on existing air quality monitoring and what additional equipment would be set up to provide baseline data at strategic boundary locations. We are particularly concerned about displaced traffic using our school streets. Our questions remain unanswered. CCRA undertook some independent air quality monitoring back in 2015 and found that the nitrogen dioxide levels (54.4 micrograms per cubic metre) outside Fossdene School, Victoria Way, far exceeded the EU legal limits in operation at the time (40 per cubic metre). The website London Air (londonair.org.uk) shows Greenwich's monitoring equipment is sited in John Harrison Way, Woolwich Flyover, Hoskins Street and Blackheath. These locations are inadequate to give a baseline for air quality on boundary roads before the implementation of the trial. Baseline measures are essential when evaluating the success of any scheme. So, our question remains unanswered: 'what additional air quality monitoring is being put in place pending the introduction of the LTN scheme in the Westcombe/Charlton area?' We are not holding our breath for an answer from RBG.

Name and address supplied

Advertising Manager

The Westcombe News seeks a new advertising manager. Tasks in this voluntary position include responding to queries for new ads, invoicing and monitoring payment. Many advertisers pre-pay for future ads, so monthly invoicing is minimal.

Basic spreadsheet skills a bonus but training could be given. Around 7/10 hours over the month would be needed.

Please contact Marilyn on
Advertising@westcombesociety.org
or 07939386215

Let's Party

At the heart of a vibrant community is its volunteers, and The Westcombe Society takes much delight each year in throwing a party to thank its committed, hard-working, enthusiastic helpers. Many of these people belong to The Westcombe Society, so on February 7th 2025, from 7.30 to 10.00pm, all members and volunteers are heartily invited to Mycenae House for a delicious light spread and drinks. If you're thinking about joining the society and/or becoming a volunteer, do please come along and get to know like-minded locals who will tell you how satisfying and rewarding it is to give back to our beautiful part of London.

Diane Blackwell

Letter

Swifts

As I have been keeping a particular eye out for the comings and goings of swifts over Blackheath during recent years it was very good to read the article by Shirley Broughton in your November issue which was full of information about them. Although I hardly saw any in 2023, and 2024 was late to start, I found that this year was much better for swift sightings over our area.

The swifts, as you can imagine, particularly like the open space of Blackheath, but I have noticed that they also enjoy flying across the houses facing Vanbrugh Park and down over the trees of Beaconsfield Road as well, though I have hardly made any sightings of them north of Westcombe Park Road.

Being permanent summer residents in our area therefore we must make every effort on behalf of these fabulous birds by following the helpful suggestions listed in last issue's article and if you haven't already read it, I do recommend you to do so before next year is upon us.

James Moore, Glenluce Road

WRISTWORTH HEATING & PLUMBING

Installation - Servicing - Repair

Tel: 07725 008280
Email: wristworth@hotmail.co.uk



Check Out Our **NEW** Website: wristworthheating.weebly.com

CARPENTER

Specialist in
refurbishment, repair and
replacement of
sash windows,
front doors overhauled.

Call
MALCOLM TIERNEY
07775 657371

R.G. Austin
(Established 1963)



Heating Engineers,
Property Maintenance,
Electrics, Painting,
Decorating, Plumbing,
Central Heating,



Shower and Bathroom Specialists

2A Hassendean Rd, Blackheath SE3 8TS
Telephone: 0208 858 7359
rgaustintd@gmail.com

Emergencies: 07738124344
email: rgaustintd@gmail.com

NEIGHBOURHOOD

Christmas Is A Cracker At The Standard

It's beginning to feel a lot like Christmas when you let your local Standard shopkeepers supply all the goodies - food, decorations, toys, party wear and presents for those special people and pets in your life. It's personal, time saving, value for money and less stressful than battling crowds in malls and central London.



You can count on Hasan and Elif at Apple n' Orange for real pine trees as well as chestnuts, panet-ones and bespoke gift hampers starting at £2.

For a truly beautiful Christmas wreath look no further than Passion Flower. You'll also find sparkly baubles to hang on the tree here, along with cards, jewellery and specialty chocolates.



And then there's The Voewood, the go to for those last-minute special gifts, scented candles, exotically packaged oils, soaps and diffusers from Ortigia Sicilia, cushions, throws, quirky toys for little ones, wonderful decorations...and honestly, there's got to be something for everyone in this shop.

Over at the Blackheath Pet Supplies, Tamajin can make your pet's Christmas Day with special

treats, stockings packed with tasty morsels, an assortment of fun toys (gnomes are popular this year!) ranging in price from £7 to £11, and smart good-quality weatherproof coats in all dog sizes.



Perhaps a gift voucher from Sarah Crawford Advanced Aesthetics would be the perfect present? There's a wide range of treatments on offer via a voucher including manicures, waxing, injectables, skin rejuvenation treatments and more.

At Brothers Bakery, Christmas specials include turkey sausage rolls, Christmas dinner pasties and pigs in blankets with homemade cranberry sauce. The brothers are also happy to cater for parties but need one week's notice. Boulangerie Jade are hard to beat

for mince pies!



Ever-reliable Standard DIY is good for real Christmas trees ... and also a variety of lights to make them sparkle.

The Standard's three charity shops - Red Cross, Greenwich & Bexley Hospice and Cats Protection are, as ever, a fabulous source of modestly-priced books, toys, ornaments, cards, party clothes and so many other things.

The local butcher is taking orders for the meats of the season, and the redesigned M&S is the hub of the Standard's Christmas food and drink offerings.

Season's greetings from all at the Standard.

Diane Blackwell

Women of Greenwich

We can all name one or two of the women who have contributed to the history of our local borough. Elizabeth I would perhaps be the woman most commonly associated with the history of Greenwich. There are of course many more and a group of us are embarking on a project to tell the histories of women associated with the area by virtue of their birth and upbringing, their place of residence or their contributions to society either locally or nationally. They may have been trailblazers in a particu-

lar profession, have achieved in the arena of the arts or science; they may have, through their activism, helped to make significant changes to the lives of others. Nineteenth century inventor Celeste Sinibaldi, twentieth century artist Jean Cooke RA and eighteenth century actress Lavinia Fenton are just three of the fascinating women who have already been nominated.

We are hoping to gather from local people the names of as many women from Greenwich's history as possible and we invite you to

consider getting involved in researching and writing this series of short biographies. The intention is for a selection of these to be published in book form and on a website for public use.

The project is being organised by Claire Eustance, senior lecturer in History at the University of Greenwich, and Carolyn Ayres from the Royal Greenwich Heritage Trust alongside local historian Dr Ann Dingsdale and myself. If you would like to nominate one or more woman for consideration a digital form can be

obtained from lynne.dixon@cantab.net or hard copies of the form are available at Mycenae House. The nomination form asks for your rationale for nominating the woman - why they are worthy of inclusion - and some brief biographical information if you know it such as date of birth, local address, period spent in the borough of Greenwich etc. We are considering the area that is now, or has ever been, part of the borough of Greenwich.

It's time to Bring Out Your Women!

Lynne Dixon

INVESTMENTS

PENSIONS

**ESTATE
PLANNING**

**STARKEY
FINANCIAL PLANNING**

Contact us: 020 8853 7160
admin@starkeyfp.co.uk

2 Charlton Road, Blackheath Standard, London SE3 7EX

Independent and friendly advice from south east
London's top team of Chartered Financial Planners

Starkey Financial Planning Ltd is authorised and regulated by the Financial Conduct Authority



BICKLEY PARK SCHOOL
INDEPENDENT PREP SCHOOL FOR BOYS & GIRLS AGED 2½-13

Be All You
Can Be

Weekly Tours
Come
and Visit

Find out more here:

Welcoming
girls and boys
from Nursery
to Year 3 in
Sept 2025

14 & 24 Page Heath Lane, Bickley, Bromley, Kent BR1 2DS
www.bickleyparkschool.co.uk

FEATURES

Tysoe

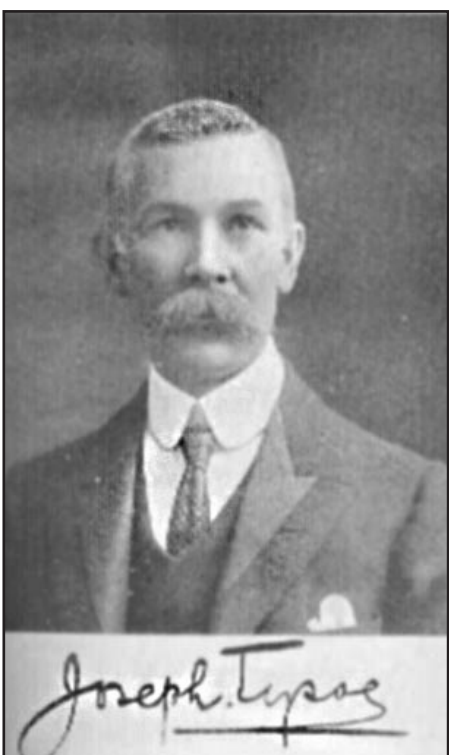
This is about the adventures in 1905 of an important man from Westcombe Park in Brazil. This was Joseph Tysoe who lived

holders “a picture which must be seen to be appreciated”. He then went down the coast by steamship ... not “first class from an English



The Black Sands at Guarapari today

at Ardaron, 45 Westcombe Park Road, from 1890 to 1905 when he moved to the much larger No.57. After his death in 1913 his widow moved back to No.45, remaining there until 1942. Tysoe was the first manager of East Greenwich gas works. In 1902 South Metropolitan Gas Co sent him to Brazil to investigate, and hopefully acquire, sources of monazite which was the source of Thorium which was needed to make gas mantles for lighting. At the time, supplies



were controlled by the German Welsbach Company. Tysoe wrote an article for the Journal of Gas Lighting about his visit to Brazil - here are some of the highlights. Tysoe arrived in Rio de Janeiro and was very impressed with the view of “universal red tiled roofs” and Rio Gas Works with its

standpoint” although the coast was “beautiful viewed from a distance” and there was a derelict gas works – “all that was left was the guide framing of the holder and various pipes ... and vultures perched in the ruins”. But he needed to go to where the monazite deposits sites were - at Guarapari they are on the shore. He said Guarapari was all “mud hovels” and he stayed at “what was described as a hotel” and ate his dinner which consisted of one course by the light of one candle. They travelled by mule to the black beaches where the monazite deposits were – the radioactivity was unknown then. Today the ‘black beaches’ are very much in evidence at Guarapari and you can get onto Google Street View and go along a seaside path, lined with tower blocks, and see them. Tysoe left quite quickly – not clear why - but the steam launch had problems and he was frightened of an accident at sea, so he got a horse and a guide. The ride back took two days with an overnight stay half way. He was very pleased, not only that it was safer, but the “scenery and objects of interest in the forest were full recompense for the inconvenience”. He had failed to get any concessions for South Met Gas, but he kept quiet about that! He clearly hated his mission and couldn’t wait to get back to Westcombe Park and also see how the management of East Greenwich gas works had survived without him.

Mary Mills

Lime Bikes: a report on progress

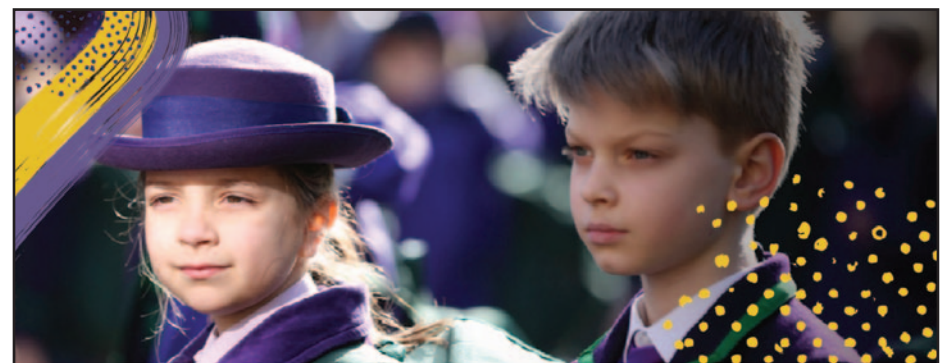
In June this year, Greenwich Wire ran an article on Lime Bikes, suggesting that a deal on e-bike parking bays was imminent in Greenwich and that a memorandum of understanding with Lime “could be signed this

“parked in an unsafe and obstructive manner”. So, they are gradually introducing parking bays where riders must park or face penalties. Brent Council have gone one step further and threatened to ban the service unless the company



month – with a traffic order to create the required dedicated bays to follow.” Lime Bikes, while encouraging greater use of cycling, also cause complaints from pedestrians. When parked they frequently fall over and are extremely heavy to lift. They sometimes block pavements to the extent that the visually impaired, users of buggies, wheelchairs, shopping trolleys and mobility scooter have to step into the road. In September Westcombe News ran an item on the inconsiderate parking of Lime Bikes. We printed a press release from the Royal Borough of Greenwich which said that they were exploring the idea of designated parking bays for e-bikes. We have asked them for an update on progress. Lewisham reported in October that they have already signed a deal. While wanting to encourage cycling they recognised that some bikes are

can improve the situation. The Council leader has received considerable support from residents for his approach. Lime claim to provide a local service with no-one more than five minutes walk away from a parking zone. Users are advised to “only park in designated areas without blocking access to walkways and roads”. They are required to take a picture of the bike when they park and can be fined if this is not done safely. A team of Lime employees drive around London collecting bikes parked incorrectly. Let us hope that whatever arrangement is reached by Greenwich Council it has the effect of keeping our pavements clear. To report illegally parked vehicles and/or make a complaint, contact <https://help.li.me/hc/en-gb/categories/360004847814-Reporting-and-Complaints>



 **The Pointer School**

Part of  **Dukes Education Family**

A leading London prep school for girls & boys 3-11 in Blackheath, SE London. Founded in 1950

“...our wonderful teachers and Head Teacher, Mrs Crookes. With patience, good humour, and just a little craziness, they have coaxed and inspired us to achieve things we would not have thought possible!”

Head: Charlotte Crookes

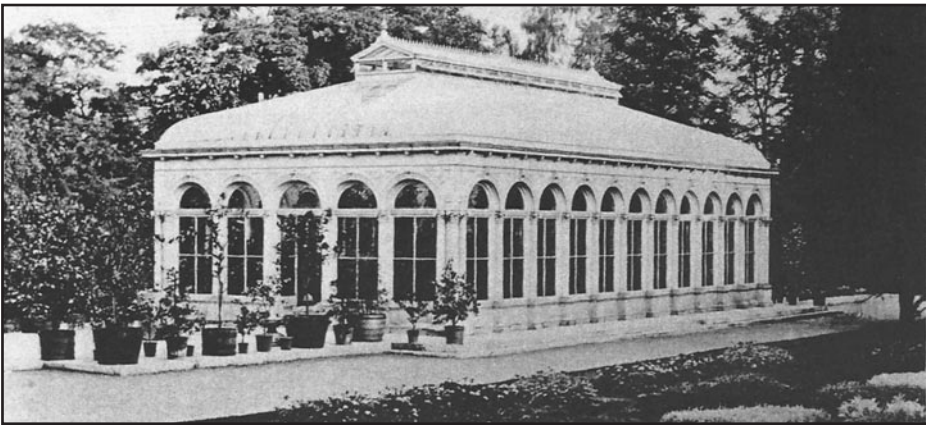
0208 293 1331 pointers.school [@pointerschool](https://www.instagram.com/pointerschool)

FEATURES

Tracing the History of Mycenae Gardens: from country villa to public asset

The Friends of Mycenae Gardens held its Annual General Meeting on October 21st. Once the business end of the agenda was over, with reports on finance and activities, we heard from Lynne Dixon, who has been researching the gardens from the time they were laid out for John Julius Angerstein to the present day. Lynne is a geographer, and she gave a fascinating talk with excellent

plantation with rare specimen trees, an orangery, a 4-acre kitchen garden with more hothouses and a grotto. The house itself had an expansive lawn with vistas to the Thames. Visitors included the Prince Regent, Samuel Johnson, and famous painters of the day like Thomas Lawrence. However, the Angerstein family lost interest in the house and by the 20th century chunks of the



The orangery, Woodlands, probably very early 20th C, courtesy of Lynne Dixon.

maps of the changes. Woodlands, the lovely house that's now the Waldorf School, was built on agricultural land. The family invested a great deal into making the grounds fit for a wealthy country residence. Lynne's talk took us from 1803, when society news covered a large party held at Woodlands, to 1947, when the house had become a convent. The gardens, in the 1800s, were

land had been sold off for housing. Now the remains of the fabulous gardens are quite limited. We think that some of the more impressive local trees were part of the landscape that the Angersteins knew, for instance the Beaconsfield oak tree. Yet the massive London plane trees that now grow in Mycenae Gardens weren't planted for the family. The Friends are trying to rejuvenate some areas of the gardens and have



Picture of Woodlands house, looking north, courtesy of Lynne Dixon. Note the gardener tilling uphill with his barrow.

something to marvel over, according to reports. In particular, the heated greenhouse was a major feature, at 300 feet long and 60 feet wide. This stood where houses are now on the east side of Beaconsfield Road, and there is no trace of it today. It, and the rest of the gardens, were run by a famous plantsman, David Stewart, and eventually his mentee, Robert Sweet. The greenhouse was filled with exotic plants brought from botanical expeditions to South Africa, China, and Australia, and tender and tropical fruits like pineapples and peaches. And it was central to some of the parties held at the house: in July 1803, ices were served there. We're now hoping that one day we might trace the site of an ice house.

Eventually, the grounds covered around 40 acres, with another 131 acres of farmland. There was a paddock, an orchard, an 'American'

received considerable help from locals and the council as well as a grant from Veolia for this. We're not trying to replicate the formal plantings though, let alone the massive hothouses that must have cost enormous sums of money! The AGM also heard about plans for the gardens, and the sorts of shrubs, herbaceous plants and wildflowers we intend to plant. Please keep an eye out for volunteering opportunities. We hold work parties on the last weekend of each month, and we're now putting in plants to make the Gardens a brighter and more welcoming spot for all its users, from pollinating insects to people. And we would welcome your photos of the gardens, for our Photo of the Month. There might be few pictures from the 1800s, but we would love to see what you most appreciate about the modern Gardens.

More2Nurseries Spreads Christmas Cheer with Support for Young MumsAid and Local Families

More2Nurseries – two Ofsted Outstanding nurseries in Greenwich (More2Childcare and More2Riverside) are spreading holiday cheer through two heartwarming projects. This year, in partnership with The Bridge at East Greenwich Pleasaunce, More2Nurseries is funding 40 places for families to visit Father Christmas on Sunday, 8th December, from 11 am to 4 pm. Additionally, More2Nurseries is continuing its annual collaboration with award-winning charity MumsAid, with a dedicated fundraiser to provide Christmas presents for young mothers in need. The funded visit to Father Christmas within the Christmas Market at The Bridge will offer struggling families a special holiday experience. Each child will receive a Christmas gift and a keepsake Polaroid photo with Father Christmas, ensuring a memory to cherish. This initiative, organised with support from the Caletock Estate Residents' Association, aims to bring joy to vulnerable families during a season that can be particularly challenging. By providing this experience, More2Nurseries and The Bridge hope to bring festive magic to families who need it most. In tandem with the Father Christmas visits, More2Nurseries is strengthening its commitment to MumsAid, a charity that offers professional mental health support to young mothers. This year,

More2Nurseries' ongoing "Christmas Bauble Appeal" will raise funds to give over 30 young mothers, aged 15-21, a thoughtful Christmas present. For many of these young women, the gift provided by More2Nurseries is the only one they will receive during the holiday season. Each bauble on the appeal highlights the challenges these mothers face, encouraging More2Nurseries families to show their support through donations. "Our goal is to make Christmas special for everyone, especially those who might be facing difficult times. For the young mums we support through MumsAid, this can be a particularly lonely season," said Eve Daniels at More2Nurseries'. "Through this campaign, we're hoping to create an uplifting and memorable Christmas for them."

More2Nurseries invites the Greenwich community to support these efforts. By donating to the Christmas Bauble Appeal, residents can help bring a smile to a young mother and brighten her Christmas. More2Nurseries is proud to partner with The Bridge, MumsAid, and Caletock Estate Residents' Association in delivering a meaningful holiday to all. For more information or to donate to the Christmas Bauble Appeal, please visit Just Giving Fundraising page for YoungMums Aid For more information about the Christmas Market please visit <https://www.thebridges10.co.uk/>

St Olave's Prep School

Contact us for further information or to arrange a tour

“ The quality of the pupils' academic and other achievements is excellent ”
ISI Inspection Report

www.stolaves.org.uk. Call 020 8294 8930

ENVIRONMENT

DIRTY: South East London Combined Heat and Power Plant

Twenty years ago, Greenwich was considered one of the best authorities in the country for recycling and clean waste disposal. Waste is transported to treatment facilities after it is collected, from where it can be sent to landfills, incineration plants or recycling centres. In the UK, more than 70% of non-recyclable waste ends up in landfills.

In 2022/23 Greenwich sent 70% of its waste to SELCHP, up from 58% in 2014/15. However, not all the waste that arrives at SELCHP causes emissions. During the process, ferrous metals are removed for recycling and the ash is sent for reprocessing into recycled material for road building or construction. Hot gases produced in the combustion



Travelling by train to London one can't help but notice the huge SELCHP plant. It was opened in November 1994 and was a combined venture with the boroughs of Greenwich and Lewisham together with the Regional Electricity Company, Veolia, and other energy from waste specialists. It was designed to reduce the need for landfill sites by producing energy from waste produced by 464,000 local households across South East London. This produces electricity for 48,000 homes and hot water for 2,800 homes.

In 2002, Greenpeace protesters expressed concern about the level of dioxins being emitted, which they claimed were damaging to health. They managed to enter the main tipping hall and climbed the chimney. The site was shut down for three days before they were removed. In 2003 the then Environment Minister announced measures to cut the amount of dioxins permitted to enter the atmosphere. More recently, local residents have complained about levels of dust in the air.

process pass through a water tube boiler where they are cooled. The heated water is transformed into steam. A turbo generator uses the steam to produce electricity for export to the National Grid. However, incinerators are no longer felt to be the cleanest and most efficient way of producing energy. About 3.1% of the UK's energy comes from waste incinerators and the SELCHP plant is the dirtiest of them, according to recent analysis. While taxes on using landfill sites are high, the use of incinerators seem to be the answer, but councils are now trying to increase their rate of recycling. Greenwich has a recycling rate of about 30% and collects non-recyclable rubbish less frequently in an attempt to encourage recycling and reduce atmospheric pollution. Greenwich Council said: "For several decades we've been reducing the amount of waste going to landfill in favour of recycling, as well as working to minimise the amount of waste produced in the borough."

West and East Greenwich LTN

By the time you read this the LTN will be in place. This means that the roads crossing the railway in Westcombe Park will be monitored between 7am and 10am and between 3pm and 7pm, Monday to Friday with all but exempt traffic being fined. Enforcement will be by ANPR (Automatic Number Plate Recognition) i.e. cameras. The LTN does not operate on Saturdays and Sundays.

The following roads are affected:

East Greenwich

- Westcombe Hill (junction with Station Crescent) – bus gate
- Halstow Road – Camera enforced traffic filter
- Vanbrugh Hill (junction with Dinsdale Road) – bus gate
- Maze Hill (junction with Tom Smith Close) – Camera enforced traffic filter
- St Johns Park (junction with Vanbrugh Park) – Camera enforced traffic filter
- Langton Way (junction with Old Dover Road) – Camera enforced traffic filter

West Greenwich

- Crooms Hill (junction with Burney Street) – Camera enforced

traffic filter

- Circus Street (junction with Royal Hill) – Camera enforced traffic filter
 - Royal Hill (junction with Royal Place) – Camera enforced traffic filter
 - Royal Hill (junction with Point Hill) – Camera enforced traffic filter
 - Winforton Street (junction with Point Hill) – Camera enforced traffic filter
 - Maidenstone Hill (junction with Point Hill) – Camera enforced traffic filter
 - Lindsell Street (junction with Greenwich South Street) – no entry (into Lindsell Street)
- More information can be found on <https://greenersafergreenwich.commonplace.is/> where there will be an option to comment once the LTN is active. Comments can also be sent to transport-strategy@royalgreenwich.gov.uk If you would like your feedback and comments on these important issues to be included in the February issue of Westcombe News, please email: environment@westcombesociety.org

Cycleways

Following a consultation period during which comments were sought on the Greenwich to Charlton cycleway, the Council has decided to make the trial permanent. This is despite some evidence of negative impacts on traffic, particular buses, and of delays when there were roadworks or accidents on the A206.

There were criticisms, particularly from blind and partially sighted

respondents, of the design of the bus stop bypasses. TfL are reviewing the inconsistencies in the design of these so that the visually impaired are not disadvantaged. In a statement, the Council said that although its decision may have 'negative impacts on some groups with protected characteristics' they were satisfied that the scheme should be implemented.

PLANNING APPLICATIONS*

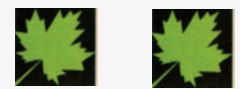
www.westcombesociety.org

16 GLENLUCE ROAD, Flat 4 ref 24/3069/F
To replace existing windows with white uPVC double glazed windows.
113 MYCENAE ROAD ref 24/3511/SD
Basement Impact Details regarding demolition of existing dwelling and building 3x4 bedroom dwellings.

TREE WORKS
160 LANGTON WAY ref 24/3730/TC
To fell yellow mimosa and eucalyptus in rear garden.
25 VANBRUGH PARK ref 24/3717/TC
To fell cherry in front garden and prune tree of heaven and two damson trees

* Please be advised that the planning applications noted here are based on information available at the time of print. For the latest updates, please visit our website www.westcombesociety.org

A & A LANDSCAPES Landscape Specialists



Free advice & estimates
Qualified horticulturalist

All aspects of soft & hard landscaping work carried out including

- * Maintenance
- * Site clearance
- * Turfing
- * Tree surgery
- * Fencing
- * Patios
- * Brickwork

Tel. 020 8318 2530

PSYCHOTHERAPY

For all your emotional and cognitive needs.

Psychotherapist with over 30 years experience in trauma, neurodiversity, depression, anxiety, nightmares, abuse.

I work with adults, teenagers, couples and families.

Based in SE4

email: secchitherapy@gmail.com
07957563320

WHAT'S ON

Blackheath Halls

Sun 1 Dec 3pm

A Festive Family Sing a-long

Sun 1 Dec 6pm

A Concert for Stephen Oliver by Matthew Rose & Friends

Mon 2 Dec 10am

Music Appreciation: Late Bruckner & Mahler

Wed 4 Dec 7pm

Trinity Laban Opera Scenes: Winter Tales

Thu 5 Dec 6.30pm

Trinity Laban Opera Scenes: Winter Tales

Thu 5 Dec 7.30pm

Trinity Laban Symphonic Winds

Thu 5 Dec 8pm

Trinity Laban Opera Scenes: Winter Tales

Fri 6 Dec 7pm

Trinity Laban BAMPI gig

Sat 7 Dec 7.30pm

Haven't Stopped Dancing Yet

Sun 8 Dec 2pm

The Snowman with East London Brass

Mon 9 Dec 10am

Music Appreciation: Late Bruckner & Mahler

Mon 9 Dec, 10 Dec, 11 Dec 7pm

Trinity Laban Songs of Change

Sat 14 Dec 7.30pm

Blackheath Goes Gospel

Sun 15 Dec 7.30pm

Blackheath Halls Christmas Concert

Mon 16 Dec 1.10pm

Lunchtime Recital: Beatrice Nicholas

Sun 22 Dec 1.30pm & 4pm

The Nutcracker (Let's All Dance)

Sun 23 Dec 11am & 1.30pm

The Nutcracker (Let's All Dance)

Mon 13 Jan 1.10pm

Lunchtime Recital: Peter and the Wolf (Blaze Ensemble)

Mon 20 Jan 1.10pm

Lunchtime Recital: XinRu Chen

Blackheath Halls are also taking part in the Big Give Christmas Challenge again this year (the match funding campaign), which this year runs from 3-10 Dec with every pound donated to their youth programme. Please give if you can at: www.blackheath-halls.com/support-us/big-give-christmas-challenge-2024/

Royal Observatory

Evening with the Stars

Join the Royal Observatory astronomers for a unique and awe-inspiring stargazing experience this winter. The evening will include a planetarium show and exclusive out-of-hours tour of the 130-year-old Great Equatorial Telescope. Then, weather permitting, the fantastic team of astronomers will guide attendees across the night sky using modern-day telescopes.

Date: 13, 14 December 2024 | 10, 11, 24, 25 January 2025

Time: 17.30 – 21.00

Suitability: Suitable for ages 7 and over

Location: Royal Observatory

Admission: Adult £24 | Student £21.60

| Child £12

www.rmg.co.uk/whats-on/

royal-observatory/evening-stars

Christmas Lecture

Visit the Peter Harrison Planetarium after-hours for the annual Christmas Lecture delivered by a guest speaker from the world of astronomy and space science.

Date: 7 December 2024

Time: 19.00 – 20.00

Suitability: Suitable for ages 7 and over

Location: Royal Observatory

Admission: Adult £10 | Student £9 |

Child £5

<http://www.rmg.co.uk>

Old Royal Naval College Greenwich

Mars in the Painted Hall

23 Nov 2024–20 Jan 2025

Tickets: £16.50

Painted Hall, Old Royal Naval College, London SE10 9NN

Luke Jerram's astonishing installation Mars is coming to the Painted Hall this winter. Following the sell-out success

of Gaia and Museum of the Moon, Mars will complete the trilogy of Jerram's out-of-this-world installations at the iconic Old Royal Naval College.

<https://ornc.org/whats-on/mars/>

Christmas Carol Concert in the Chapel

2, 9 & 16 Dec | 2pm-3.15pm

Tickets: £16-£32.50

Chapel of St Peter & St Paul, Old Royal Naval College, London SE10 9NN

Enjoy a festive carols concert in the neoclassical masterpiece Chapel of St Peter & St Paul, performed by the award-winning Trinity Laban Choir. Included in your ticket is entry to the stunning Painted Hall, which will be featuring Luke Jerram's amazing installation Mars.

<https://ornc.org/whats-on/christmas-carol-concert-in-the-chapel/>

Father Christmas | Christmas Magic in Greenwich

30 Nov–23 Dec | Various times

Tickets: £3–£15 (Children), Free

(Adults)

Admiral's House, Old Royal Naval College

Old Royal Father Christmas and his granddaughter (nicknamed Helper-Bean) have made themselves a home in Greenwich this winter. Join them for a special reading of Twas the Night Before Christmas, before receiving a special gift and having the opportunity to take a photo with them.

<https://ornc.org/whats-on/father-christmas-greenwich/>

St George's Church

Saturday 7th December, 1-5pm -

Christmas Fair in Church

Saturday 14th December, 4pm -

Carols at East Greenwich Pleasaunce

Monday 16th December, 7pm -

Community Carols at Mycenae House

Saturday 21st December, 2-4pm -

Nativity on Oval Square, Greenwich Peninsula

Saturday 21st December, 4pm -

Beer and Carols at The Royal Standard

Sunday 22nd December, 6pm -

Carols by Candlelight

Tuesday 24th December, 4pm -

Café Crib Service

Tuesday 24th December, 11:30pm -

Midnight Communion

Wednesday 25th December, 10:30am -

Christmas Day Family Communion.

www.stgeorgeswestcombepark.org.uk



The Arts Society Greenwich

www.theartsocietygreenwich.org.uk

Christmas Stories from the National Gallery

Monday 9 Dec 2024 at 7.30 pm

Lecturer: Caroline McDonald Haig

Venue: James Wolfe Primary School,

Royal Hill, Greenwich SE10 8RZ

Guests very welcome: £10

London's National Gallery is a

marvellous place to see how artists

have treated the Christmas story

through the ages. The earliest

paintings date from before the

Reformation when the richest

imagery and fabulous stories of the

saints were much admired. Following

the Counter Reformation in the

middle years of the 16th century,

Catholic art was stripped of these

colourful stories derived from the

Golden Legend, which were regarded

often as superstitious fabrications.

Edward Hopper - Painter of

Loneliness

Monday 13 January 2025 at 7.30 pm

Lecturer: Lydia Bauman

Venue: James Wolfe Primary School,

Royal Hill, Greenwich SE10 8RZ

Guests very welcome: £10

The American artist who has become

synonymous with the isolation

experienced by many in the covid

era. We will look at Hopper's unique

contribution to American art in the

20th century with his haunting

images of loneliness in the midst of

urban life.

www.theartsocietygreenwich.org.uk

Thomas Tallis Society

Respighi Lauda per la Natività del Signore

Thomas Tallis Society Choir

performs Ottorino Respighi's Lauda

per la Natività del Signore, scored

for woodwind and piano, alongside

some Christmas motets and carols.

Conducted by Eamonn Dougan

7.30pm, Sunday 15 December 2024

St Alfege Church, Greenwich

Tickets £18 & £14, available online

or on the door:

www.ticketsource.co.uk/tts

Harmony Sinfonia

presents Fairy Tales: a magical evening of music.

Saturday 7th December at 6pm

Hansel and Gretel Overture by

Humperdinck; The Sorcerer's

Apprentice by Dukas and The

Fairy's Kiss by Stravinsky. Join us at

St Margaret's Church, Blackheath

SE13 5DL. Tickets £14/£10/under 12s

free.

Available at harmonysinfonia.co.uk

or on the door.

Mycenae House

Fri 6th Dec 7.30pm - Citizens of the World Choir Christmas Concert. A festive evening of music and unity. £15/10.

Sat 7th Dec 10.30am - Dementia Music Session. For care givers & those living with dementia. Free.

Fri 13th Dec 7.30pm - The SWOP Sessions. Foot tapping, finger snapping, jazz, soul & blues with Open Mic. £8.

Mon 16th Dec 7pm - A Choral Christmas. Come together as a community to celebrate this time of year in song. Free.

Tues 17th Dec 10.30am - Baby Broadway Concert. The whole family can sing along to songs from hit musicals. £14.

Wed 18th Dec 7.30pm - Her Voice at Christmas. A festive celebration concert in support of WSUP Woolwich. £15.

Fri 20th Dec 3.15pm - Bach to Baby concert. 'Twas the Night Before Christmas' Classical Concert for families. £15.

Fri 20th Dec 7.45pm - Kristmas with The Kimberleys. Jim & Isobel play their favourite old folk & rare yuletide songs. £15.

Sat 18th Jan 10.30am - Dementia Music Session. For care givers & those living with dementia. Free.

Fri 24th Jan 7.30pm - Burns Night Celebration. Join GFMA for their popular annual Burns Night Celebration. Tbc.

Fri 31st Jan 7pm - Gulag Vacation's Uncle Josef's Holiday Camp. A fantastic tale told through music and song. £12.

For further information about all Mycenae House events visit
www.mycenaehouse.co.uk

Cutty Sark

Burns Night: In the Dark

In the Dark is a sound experience performed entirely in the dark - for both the audience and the musicians.

The music and 'set list' are always secret, as are the performers. No phones, no theatrics, no acrobatics.

Instead it dares differently, by taking away your sense of sight for just an hour while extraordinary music is performed fully live around you.

Date: 25 January 2025

Age: Suitable for ages 5 and over who don't mind sitting in the dark for an hour

Location: Cutty Sark

Admission: General £40 |

Member £36

www.in-the-dark.com

Sea Shanty Singers

Cutty Sark's resident sea shanty groups Swinging the Lead and The HogEye Men transform the famous tea clipper's 'Tween Deck with the harmonies of sea shanties, traditional

working songs. Come along to hear this enduring maritime tradition brought to life.

Dates: 7, 8 December 2024

Time: 11.45 | 12.45 | 13.30

Age: Suitable for all ages

Location: Cutty Sark

Admission: Free with admission to the ship

www.rmg.co.uk/whats-on/

cutty-sark/sea-shanty-singers

Join our Management Committee.

Greenwich Housing Society is a small local housing association with properties in Blackheath. We provide homes for the independent elderly over 60 with a local connection with Greenwich. It is managed by a voluntary committee that meets six times a year. We are currently looking for new committee members, especially with finance or legal skills. You can find out more about us on our website greenwichhousingociety.org.uk If you are interested and would like to find out more, please contact us at greenwich.housing.society@gmail.com

MARKET PLACE

TUITION

SPANISH TUITION, on line, latinoamerican Spanish teacher. All levels and ages, GCSE, A levels. Please contact: Miguel at 07910318513 or migansiergut52@gmail.com

ART TUITION

I am a practicing artist looking to tutor all ages and abilities including GCSE and A-Level. Please write to ac@allan-collinsartist.com

MATHS & ENGLISH TUITION TO GCSE AND

PREPARATION FOR 11+ AND INDEPENDENT SCHOOL SELECTION TESTS by qualified and experienced teacher.

marystuition.com

Mary Bauckham 07709 089 838

marybauckham@gmail.com

HOME SUPPORT AND

TRAINING FOR YOUR

DIGITAL DEVICES

Need some help with computers, phones and tablets? I'm a DBS checked IT trainer with 21 years experience, friendly and patient. £45/hour (£20 call out), discounted for block bookings.

To discuss options, call Paul on 07985 643 506 or email

paul.clayton@soulchip.co.uk

MATHS TUITION

Qualified and experienced secondary teacher offers tuition to GCSE level.

Call Miv Whitaker: 07745 816338; or email miv.whitaker@gmail.com

SERVICES & TRADE

REGULAR GARDEN MAINTENANCE: Winter tidy ups, lawncare, weeding, seasonal pruning, topiary, hedge cutting, planting. Communal contracts. RHS qualified. Free quotes and advice.

Call John 07746 121510

davidsongardening@outlook.com

VANBRUGH DOG WALKING.

Insured, DBS checked, business references. £15 per hour for one dog; other prices on request. Please email:

vanbrughdogwalking@hotmail.com

UPHOLSTERER

Specialising in traditional upholstery.

www.suemayesupholstery.net

or phone 07932 040 298

TRAINED CHIMNEY SWEEP

& STOVE INSTALLER

Fast, friendly Happy to work!

Call Anthony

on 07772 649577 or email:

chimneymaintenance@gmail.com

INTERIOR DECORATOR with

over 30 years experience. Free

quotations and friendly advice on

all your decorating requirements.

Telephone Ashley Greaves

07880 984 508.

PEST CONTROL SERVICES

Mice, Rats, Squirrels, Wasps,

Foxes etc. Local Service

07850 839 655

T.TA ELECTRICS. NICEIC Approved Contractor, Quality Tradesman. All electrical work undertaken, Fully Insured & Guaranteed.

24HR EMERGENCY ELECTRICAL.

Please call Tony on 07961 509

403 OR 020 8488 7425 OR

info@ttaelectrics.co.uk

HOMEWORKS All-round

handyman for those DIY's you

have no time for! General repairs.

Painting & Decorating. General

Carpentry and flooring. Flat-pack

assembly. Patio and deck

cleaning. No job too small.

Contact Matthew Barron

07903 388658

ELECTRICIAN / ALARM

ENGINEER

No job too small TMIET

registered.

Call 07879 011792

WESTCOMBE CLEANERS

I'm a friendly, hard-working &

organised domestic cleaner.

Regular or single services.

Competitive rates. Additional

tasks. I love my clients to be

happy. Phone 07746 291617

TOM ELLIS

BESPOKE CARPENTRY

Alcove bookcases, cabinets,

wardrobes and window seats.

M. 07510 869 947

MARK CHEESEMAN, LOCAL

CARPENTER AND JOINER

WITH OVER 30 YEARS

EXPERIENCE.

All Aspects Of Carpentry and

Construction Executed

Considerately and to a High

Standard. Both Traditional and

Contemporary Design Joinery -

Cupboards, Window seats,

Floating Shelves, Engineered

Flooring Fitted Etc. Also Locks

Changed. Sash Window Overhaul.

If you have Rotten Window Sills,

Door Frames Etc. rather than

replace them with the associated

upheaval and expense, why not

have a Timber/Resin Repair?

Please Call Mark on 07767

456131 or H: 020 8854 4028.

ANGELO, ELECTRICIAN

No Job Too Small

T - 020 87616012/

M - 07850 767 283

Email - angelo@glennies.net

Part P Certificated

18th Edition & JIB Registered

LOCAL CARPET CLEANER

Specialist in cleaning Carpets,

Upholstery & Rugs.

www.carpetcrew.co.uk

Phone 07828503132

A MAN AND A VAN

Tel: 020 8858 3889

Mobile: 07885 917842

HOLIDAYS

WHITSTABLE

WEEKENDS/WEEKS

Seawall house between Oyster

Warehouse and harbour.

Sleeps 5. Fantastic Views.

Email -

tess.roberts@hotmail.co.uk

Phone - 07958377336



TROJAN PRESS

PRINTING IN BLACKHEATH
SINCE 1978

NOW TAKING ORDERS FOR
CALENDARS AND CHRISTMAS
CARDS

AS WELL AS FLYERS, BUSINESS CARDS,
ORDER OF SERVICES & ALL THE
STUFF WE DO ALL YEAR ROUND

1a Lizban St

Blackheath, London SE3 8SS

Tel: 020 8853 2268

Email: info@trojanpress.co.uk

www.trojanpress.com

TRAFALGAR ROWING CENTRE



A versatile venue offering a
captivating backdrop for
a wide range of events.

- Weddings
- Parties
- Conferences
- Filming
- Private Hire

Crane Street, Greenwich
trafalgarrowingcentre.co.uk

Bookings: steven.deere@globerowingclub.co.uk

DISCOUNT!

(When you show your Westcombe
Society membership card)

ALL CITY LOCKSMITHS LTD

offer upto a 15% discount for local
residents

ROYAL NEPALESE

RESTAURANT (Station Crescent) 20%

OFF meals for two or more

Sunday - Thursday.

COTON & HAMBLIN LENS CLUB-

Complimentary standard coated single

vision lenses worth £50 when

purchasing complete spectacles.

T's & C's apply.

BLACKHEATH EYECARE

OPTICIANS

Money-saving Eyeplan

membership offered

TROJAN PRESS 10% OFF all

quotations

WESTCOMBE DRY CLEANERS

10% discount on Dry Cleaning. Cannot
be used in conjunction with any other
offers.

A * DRIVING SCHOOL

£5 discount on the price of

one x 2 hour lesson

KAREN STOREY OF

HOMESPACE offers members 10%

discount on decluttering &

homestaging: 07951 191086

SHENDA FALVEY PERSONAL

TRAINING, STOTT PILATES & BOOT-

CAMPS

M: 07887727335

E: shenda@shendafalveypersonaltrain-

ing.co.uk

Free Bootcamp worth £12.50

Free PT/ Pilates Consultation with 20%

off first session

PAINTING & DECORATING

Interior/Exterior/
Experienced Reliable Clean
Fully Guaranteed/Insured.
References available.
Free no obligation quote
and advice given

JOHN at JAMES & LAMONT

Office 020 8462 4646

Mobile 07802 535695

jamlam.john@btinternet.com

Bruca Gardens | Local gardeners

We offer regular and
one-off garden maintenance
services for private and
residential gardens.

- Garden design
- Landscaping
- Garden clearance
- Garden maintenance
- Planting and soft landscaping
- Trees and shrubs specialist pruning



Contact us at [07896992548](tel:07896992548)
brucagardens.co.uk

IBS
BLACKHEATH HIGH
EARLY YEARS
GDST

FINALIST 2024
INDEPENDENT
SCHOOLS
OF THE YEAR
AWARDS

*I'm queen
of the jungle!*

Where girls boldly go

Book a Nursery and Forest School tour: admissions@bla.gdst.net