



Why Pave Your Front Garden, When You Could Use It To Help The Environment?

The news of how many sewage spills have been allowed in our rivers and seas has been widespread. An average of 824 spills per day in 2022; beaches closed for swimming all around the southern coast; rivers filled with algae and dying fish: it's an environmental disaster. Thames Water has been building a 'super sewer' to cope with some of this, but it's not the only answer to the problem.

Sewage spills are only supposed to happen rarely, when there is a lot of rainwater flushing out the holding tanks, but every urban area is losing more and more land to concrete. This stops rainwater being absorbed into the soil, and instead it runs into the drains and creates sewage spills. Shopping complexes play a role, but so do house extensions. And one way we can help is by making sure our front gardens remain absorbent. Even if there are good reasons to park a car in a front garden, for instance to allow electric car charging, it's important to ensure that the area stays permeable, and

able to soak up rain. This is a legal requirement, too. Yet poor building techniques and maintenance often mean that front garden parking doesn't allow moisture to be absorbed. In Ealing, a Friends of the Earth group has formed to record the impacts and advocate for better ways of designing parking spaces. Recently they talked to the Quaggy Waterways Action Group, and the Westcombe Society attended the webinar to learn more.

Rain runoff is only one of the many environmental problems associated with paving in front gardens. Hard surfaces absorb heat in the daytime and give it off at night, making urban areas hotter. The loss of greenery means less carbon dioxide can be absorbed from the atmosphere, adding to climate change. It leads to worse air pollution, as plants help to trap particulates like brake dust and exhaust fumes. And a lack of plants also means less bio-diversity and fewer sources of food for pollinating

insects. The environmental damage from transporting heavy materials like sandstone from India is substantial. Plants help protect privacy. Also, do paved front gardens seem inviting or encourage neighbours to talk to each other?

There's also a big concern for home owners: not letting rain sink into the soil can cause subsidence, especially on the London clay that underlies much of this area. This can be hugely expensive, and a nightmare for anyone trying to deal with insurance claims or move house.

So how can we improve this situation? New paving might look handsome, but if the gaps between the slabs or bricks fill up, rain simply glides off it and into the storm drains, adding to pressure on sewage systems. And while soakaways are required, they must be cleared of sand and weeds to work effectively. Many householders neglect these, adding to the problem, so maintenance is really important.

However, so too is design. It's

perfectly possible to design front garden parking spaces so that only the areas the parked car sits and a path to the front door have hard landscaping. Even better, using reinforced mesh where the wheels run allows rain to soak away. Paring away existing paving from the edges of a front garden space allows room for plants; and low-growing plants can sit happily beneath cars. There's no reason why a front garden can't both be useful for parking and aesthetically pleasing, while helping protect against climate change, pollution, and environmental issues. The Ealing group offered a before and after comparison, and you can see how much more attractive the latter is. Read more here:

<https://ealingfoe.org.uk/greening-front-gardens/>.

The Royal Horticultural Society also has advice on front gardens and the use of permeable paving. Please check the Royal Borough of Greenwich site, too, on planning requirements.



Before: Ealing Front Gardens & RHS joint project in Greenford, photo courtesy of FoE Ealing.



After: Ealing Front Gardens & RHS joint project in Greenford, photo courtesy of FoE Ealing.

CHARITY OF THE YEAR

We are delighted and thankful that the Reach Out project has been made Charity of the Year by the Westcombe Society. As manager of the project, Deborah Fitzpatrick delivers a broad package of activities aimed at tackling social isolation and wider inequalities in our community and has proved vital for many local people over the last few years. The project targets specific groups such as the elderly, people with diagnosed and undiagnosed mental health issues, early sufferers of Dementia and Alzheimer's, people with physical and mobility issues and anyone suffering from social isolation post Covid lockdown and people who just need the company of others.

This funding from the Westcombe Society will allow the Reach Out project to invest in equipment and materials to assist in the

programme including; craft and arts materials, audio equipment for movement, dance and social activities and also pay for an updated promotional brochure and website.

Mark Johnson Brown

The Reach Out Project has also been shortlisted and is a national finalist for the Community and Enterprise of the Year 2023 with the School Library Association. This is a new award created by the School Library Association to celebrate high quality working partnerships which exist in Schools. The Award recognises the community effort to an external team which goes 'above and beyond' to support a School Library. They have been nominated for the intergenerational partnership with The John Roan Community Librarians at The John Roan School.

Editor's Note

PARKSfest 2023
Summer Sizzler **FREE**
A Garden Party • Full of Fun for You & All of the Family
Theatre : Live Music : Workshops : Kids Play
Performances : Craft Stalls : Food / Bar : DJ's
Sunday 30 July
Mycenae House & Gardens
Midday til 6pm
www.mycenaehouse.co.uk
TUDOR BARN ROYAL BOROUGH OF GREENWICH

WESTCOMBE SOCIETY

Westcombe News

PUBLISHER
The Westcombe Society
c/o 163 Westcombe Hill, SE3 7DP or
info@westcombesociety.org
Tel: 0208 853 1312
Chair: Geoff Brighty
07507 859205

GUEST EDITOR:
Marilyn Little

EDITORIAL TEAM
Westcombe Society
Polly Morgan

**ALL EDITORIAL
CORRESPONDENCE/PRESS
MATERIAL TO BE SENT TO:**
wnews@westcombesociety.org
Deadline for September copy
August 14th 2023

ENVIRONMENT
Editor: Maggie Gravelle
All comments and queries to
Emily Norton: 0208 853 2756

ADVERTISING
Andrew Cai
advertising@westcombesociety.org
Deadline for Advertising:
August 14th 2023

DISTRIBUTION
Emily Norton and volunteers
Tel: 0208 853 2756

PRINTING
Trojan Press.
Email: dave@trojanpress.co.uk
www.trojanpress.com

The views expressed in the Westcombe News are not necessarily those of the Westcombe Society or of the Editor. We take all reasonable precautions to protect the interests of our readers by ensuring as far as possible the bona fides of our advertisers but cannot accept any responsibility for them. Any complaints should be addressed to the advertiser.

To access back numbers (in colour) go to:
<http://www.westcombesociety.org/westcombenews>

WESTCOMBE SOCIETY MEMBERSHIP

We would be delighted to receive your support and annual membership subscription.

Family membership £12.
Individual membership £8.
Senior Citizens and Unwaged £4.

Please send payment to:
Christine Legg, 69 Mycenae Road, London, SE3 7SE or email:
membership@westcombesociety.org

Westcombe Society Quiz - 10th June

You can't beat a good Westcombe Society quiz, especially when it's on a balmy evening with jolly quizmasters, delicious fish and chips, and tricky questions like "how many teeth does a dog have". That wasn't the only 'tricky' question and the business of grappling with quotations, identifying birds, and working out the names of cities and countries from emoji combinations followed. By evening's end the 60 guests at the quiz had raised £200 for charity from the traditional raffle. Geoff Brighty, the new Society Chairman, who was on the winning table, thanked the

Events team and the quizmasters for a thoroughly enjoyable evening. We will be holding another Quiz in November. Further details in a future issue of the Westcombe News. By the way, typically an adult dog should have 42 teeth.



MACMILLAN CANCER SUPPORT

It's that special time of year again, when The Westcombe Society invites locals to give Macmillan Cancer Support some much appreciated financial TLC. First fundraiser off the blocks is the ever-popular Macmillan walk on Sunday Sept 17th. This year we are heading to the Queen Elizabeth Olympic Park. Full details of the route, which begins locally, will be in the September issue, but this is the early-bird alert to put this date in your diary and join us for an intriguing, historic adventure on foot that, as in previous years, will mostly be on the flat and suitable



for all fitness levels. As ever you'll be invited to take in the sights briskly or at a leisurely pace. Sensible walking shoes are obviously a must, and the fee per person is £10.

**WORLD'S BIGGEST
COFFEE
MORNING** MACMILLAN
CANCER SUPPORT

Then, on Friday Sept 24th, Mycenae House is the venue for our Coffee Morning for Macmillan Cancer Support. The fun kicks off at 10am and you can enjoy your coffee with a delicious variety of homemade cakes and sandwiches (calling volunteers to make tempting food please) until 1 p.m. There's a raffle with generous prizes too and takeaway sarnies and cakes are available. Payment can be cash or card. This event is very well-attended each year and our Macmillan Cancer friends are delighted and grateful to the generous Westcombe Park residents.

NB If you are able to help on the day or by making sandwiches or cakes do let us know by emailing info@westcombesociety.org Many thanks.

Obituary

It is with great sadness we announce the death of Sybil Whimster on the 21st April 2023. She and her family moved into Foyle Road in 1970. Despite having four young children and working part time at the Brook Hospital as a radiographer, in 1973 she became a founding member of the the Westcombe Park Society based at Mycenae House.



As children we remember being cajoled and bribed into posting the Westcombe News in the local streets!

She remained actively involved up until last year when her health started to deteriorate; even helping with Santa's Grotto well into her 80s.

Her input over the years has been tremendous and she will be much missed by her many friends in the local community.

Claire, Peter, Sue and James The Society is very grateful for Sybil's support over the years and I particularly remember the artistic effort that was put into creating Santa's Grotto. Thank you.

Marilyn Little

A & A LANDSCAPES Landscape Specialists



Free advice & estimates

Qualified horticulturalist

All aspects of soft & hard landscaping work carried out including
* Maintenance * Site clearance
* Turfing * Tree surgery
* Fencing * Patios
* Brickwork

Tel. 020 8318 2530

Advertising Rates for Display Adverts in the WN

Size	
Per Issue	Five Issue Discount
Standard 6cm x 6cm (one column wide)	
£40	£185

12cm x 6cm (horizontal or vertical)	£290
-------------------------------------	------

18cm x 6cm (horizontal or vertical)	£405
-------------------------------------	------

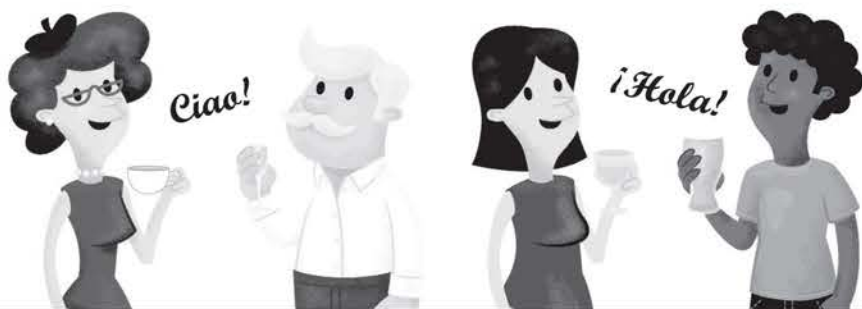
12cm x 12cm	£515
-------------	------

For further details please contact:
Advertisingmanager@westcombesociety.org

Language for Fun

Lovely, lively language lessons for adults

- Experienced & native teachers
- Small, friendly groups
- Conversation-based learning
- From beginners to advanced



Spanish, French and Italian • Booking now for Sept 23

www.languageforfun.org • lucy@languageforfun.uk • quote 'Westcombe' for special offer of free materials

NEIGHBOURHOOD

Charlton and Blackheath Amateur Horticultural Society (CABAHS)

Charlton House Walled Gardens Volunteer Scheme meets every Tuesday 2-4pm and Thursday 10-12, and anyone with an interest in gardening is welcome. We are a friendly group, usually with 12-15 volunteers at each drop-in session. Please bring your own gloves and a mug for tea break. Regular volunteers can look after their own bed in the Old Pond Garden, under the direction of Jason the Head Gardener. Occasional volunteers are very welcome to help with the varied tasks that now cover the whole estate. Contact cabahshortisoc@gmail.com for info or see our website <https://cabahs.com/old-pond-garden> for details.

Closure of the Blackwall Tunnel to Southbound Traffic

TfL issued a press release to advise users of the Blackwall Tunnel that there would be works to remove the existing Boord Street Bridge from Saturday 24 June from 00:01 to Monday 26 June at 5:00. Unfortunately this was received too late to be included in the June issue of the Westcombe News. Drainage & Utilities Works – Saturday 8 July from 00:01 to Monday 10 July at 05:00 They are also pre-warning drivers that there will be a further weekend closure of the tunnel to southbound traffic in early July to provide surface water drainage of the new road layout which will be tied into the existing drainage system around the Greenwich Peninsula. Subject to final approvals, they are currently planning to carry out these works across the weekend of the 8-10 July. The Blackwall Tunnel will be closed for southbound traffic and traffic will be required to take alternative routes. Northbound traffic through the Blackwall Tunnel will not be affected by this closure as traffic will be diverted through the southbound tunnel, but drivers are

A Summer Garden party

The MEfA Montessori Garden Party held in the Forest School/Wellbeing Garden on Saturday 17th June was a huge



success. Teachers, parents and children welcomed past student alumni and the local community. Head of School Wendy Fidler, congratulated Geoff Brighty on his appointment as Chair of the Westcombe Society. Afternoon tea was followed by face painting, poetry and pompom making and of course, the attendance of two newly hatched chicks stole the show. Thanks are due to everyone who contributed to the fun and funds raised on the day. MEfA Montessori, 135 Westcombe Hill SE3.

advised to seek alternative routes where possible across the weekend to avoid any additional delays. Woolwich Ferry / Route 108 customers / Third Party Apps Across both weekends, the Woolwich Ferry will run a special weekend service, every 15-20 minutes between 07:00 and 18:00. In addition, the route 108, will be split, with services terminating at Canning Town station and North Greenwich, with alternative arrangements put in place on Sunday night into Monday morning For the latest on how roads are running, please visit: <https://tfl.gov.uk/traffic/status/>

Obituaries

Glenda Jackson R.I.P.

Glenda Jackson, who died peacefully on 15 June, at her home in Blackheath after a short illness, was a national treasure. She was 87 – and an international celebrity, acclaimed on all sides as a hugely gifted and versatile actress. She was born in Birkenhead in May 1936; her father was a bricklayer, her mother a part-time cleaner. She went to the local



grammar school where she suffered from very low self-esteem – she thought of herself as plain, fat and ugly – she suffered from acne for a time. Armed with the three ‘O’ levels she had acquired, she got a job in Boots but she got involved in amateur dramatics and was persuaded to apply to RADA, for which she won a scholarship. She worked in repertory in various places, including Crewe, where she met and married her stage manager, Roy Hodges, with whom she had a son.

Her West End debut was in the play Alfie, where she acted as one of John Neville’s girlfriends. The world became her oyster; her first major role was as a French revolutionary hero, Charlotte Corday, in a National Theatre production of Marat/Sade. The silver screen soon beckoned, and in 1969 she won her first Academy Award for best actress in Women in Love, based on the D H Lawrence novel, playing opposite Oliver Reed. Many more films followed, including the romantic comedy A Touch of Class. Many of us especially recall her part as Queen

Elizabeth 1st (1971), and, by way of contrast, a memorable appearance as Cleopatra on the Morecombe and Wise Show. Her line, “All men are fools and what makes them fools is having beauty like what I have got” still raises a laugh; in effect, she was lampooning her role in a National Theatre production of Shakespeare’s play Antony and Cleopatra. Locally, she will be remembered for her part in Jean Genet’s play The Maids in Greenwich in 1974, and residents frequently saw her in the street doing her shopping. The acting profession did not insulate Glenda Jackson from real life; she was a life-long member of the Labour Party, but mainly involved herself in single issues such as overseas aid and human rights until, in 1992, she decided to stand for parliament, and became the MP for Hampstead. A team player on the stage, she found it hard to be the same within the Labour Party, and became very critical, especially



over the Iraq war. In 2015 she left politics and returned to acting and the theatre, playing the lead part in Shakespeare’s King Lear, an incredible performance. In 2018 she won a Tony award on her return to Broadway, and in 2019 she won an Emmy for her performance as an Alzheimer’s sufferer in the TV drama Elizabeth is Missing. Her last role was opposite Michael Caine in the film The Great Escaper.

Neville Grant

New Chair for Greenwich Foundation for the Old Royal Naval College

The new Chair has been appointed at the Greenwich Foundation for the Old Royal Naval College. Sir Stuart Etherington will start on 1st July 2023, when Tony Hales CBE completes his maximum nine years with the Foundation. Etherington’s career has centred around the leadership of voluntary organisations, serving as chief executive of the National Council for Voluntary Organisations (NCVO) from 1994-2020, championing the vital role of charities and volunteers. Sir Stuart Etherington continues to lead as Chair at the Oversight Trust, the National Centre for Social

Research and as Chair of the Advisory Board of the Centre for Charity Effectiveness. The Old Royal Naval College is cared for and run by the Greenwich Foundation, founded after the Royal Navy moved their college to the coast and the site become a heritage site, part of the Maritime Greenwich UNESCO World Heritage Site. The Old Royal Naval College welcomes over 1.2 million visitors a year to enjoy its riverside grounds, Sir Christopher Wren-designed buildings, magnificent Baroque Painted Hall, and arts and cultural programming year-round.



ALLTYPE

ROOFING SOLUTIONS

Specialists In All Types Of Roofing And Building Projects

All work comes with an Insurance Backed Guarantee

 **PRICE MATCH PROMISE**

 **100% GUARANTEE**

 **FREE QUOTATIONS**

 **LOCAL TRADESMEN**



PLEASE CALL FOR FREE ESTIMATES & FRIENDLY ADVICE

Mobile: 07498 330 704
Mobile: 07414 466 046

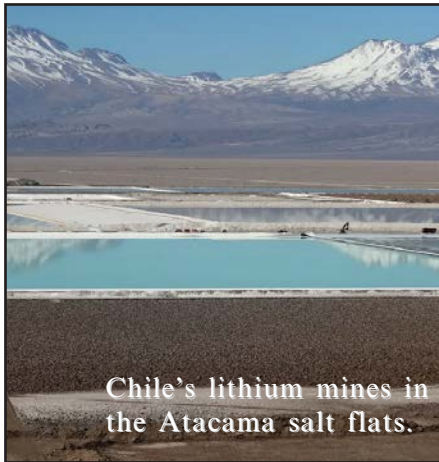
FEATURES

Vaping....should we care?

What are e-cigarettes? Electronic cigarettes have a battery to heat a liquid usually containing nicotine, propylene glycol, flavourings and other chemicals to produce a vapour which looks like smoke that users inhale. There is a small tank for the liquid, a cotton wick and coil, and a plastic case. Using these products is conveniently described as ‘vaping’.

Health risks? E-cigarettes are much less harmful than smoking tobacco but nicotine is highly addictive and adversely affects both adolescent and prenatal brain development. Nicotine is more damaging to adolescent brains than to adult brains, potentially affecting attention, learning, and mood. There is also concern about toxic chemicals in the vapour, and researchers at the Royal Brompton Hospital report of potentially life-threatening pneumonitis in those who are susceptible. A recent Lancet Editorial on e-cigarette use among adolescents says evidence suggests that vaping can increase the risk of respiratory infections and worsen existing asthma and bronchitis. As yet, we do not know the long-term consequences of vaping but we do know that it is not risk-free, especially illegal, unregulated e-cigarettes. The Royal College of Paediatrics and Child Health recently reported that 18% of 15-year-olds are vaping, and children and adolescents are being targeted by companies, using bright packaging, exotic flavours, and enticing names. They can resemble lip gloss or colourful markers and parents may be unaware what young people are carrying. E-cigarettes are readily available in supermarkets, corner shops and online and the supply has increased substantially in recent years, especially due to their popularity with younger people.

Environmental impact? In addition to potential health risks, e-cigarettes are of environmental concern, especially disposable ones which are the commonest form. The charity Material Focus, which campaigns for better recycling of electrical waste, reports that at least 1.3 million disposable vapes are thrown away every week in the UK. That is two every second. A single-use vape contains on average 0.15g of lithium which means 10 tonnes of lithium are sent to landfill each year. Lithium is classified as a “critical” raw material by the US and EU. The International Energy Agency has warned it could be in short supply within two years. Lithium is the lightest known metal and is



needed to fuel the ‘green economy’. Electric vehicles on average contain 8kg of lithium. Lithium is also used in batteries for storing energy produced by wind and solar, as well as in our mobile phones and laptops. Much of today’s lithium is extracted from liquid brine reservoirs beneath salt flats in Chile and China. The brine is pumped to the surface and allowed to evaporate in evaporation ponds. In Chile’s Atacama salt flats, the production of lithium through evaporation ponds uses around 21 million litres of water per day.

Extracting lithium is a complex process that uses huge amounts of energy and water and is both environmentally and socially damaging. It is leading to water shortages, increased salinity of rivers, contaminated water sources and soil, ground destabilisation, land grabs, biodiversity loss, ecosystem destruction, and global heating.

Regulations? More than 1.4 tonnes of illegal vapes were seized in the last six months of 2022 in the north-east of England alone. The legal e-cigarette tank capacity is 2ml but analysis by Inter Scientific of 52 products bought in England showed that 73% exceeded the legal tank capacity. The legal limit for nicotine content is 20mg/ml but overstrength vapes are being sold unlawfully in some shops. Some products claiming to be ‘nicotine free’ were found to contain almost 20mg/ml nicotine. The legal age to purchase e-cigarettes is 18 but this is clearly not enforced.

Our regulations are very weak. In the Netherlands flavoured e-cigarettes will be banned from July and plain packaging is being considered to make vapes less attractive.

You can help! Let us discourage non-smoker teenagers from vaping and let us save lithium! It is good to know that attention is starting to be given to recycling single-use vapes. VPZ shops are in a scheme to recycle used vapes and the Royal Mail is expecting to introduce a door-step collection through a comprehensive recycling scheme to be piloted by vape producer FEELM in which consumers receive a free device in exchange for every ten they deposit. The Westcombe News would like to hear of any local vape shops that offer recycling, and will publish contact details.

Ann Hill

WestcombeNEWS

Editor Wanted

The Westcombe News seeks an editor or guest editors to work within a team to plan, revise and co-ordinate material for publication together with input from the WestcombeSoc. This is a voluntary position.

For further details please contact

info@westcombesociety.org
or call 07939 386215
(Marilyn Little)



Letters

Can this be right? In order to combat air pollution, Greenwich Council has plans to ban all ice cream vans from some 30 streets, some of which are in the vicinity of Greenwich Park. So honest ice-cream vendors with families to feed join the dole queue.

The council claims its policy will stop needless 'engine idling and narrow pavements being blocked by queues'. Since both queuing and ice cream vans are a great British tradition, their action seems hard, especially on children enduring one of the hottest summers on record.

Why stop there? While they are at it, why not ban another great Greenwich tradition - music on Greenwich Park's bandstand: that could stop noise pollution. As Basil Fawltly lamented, "Yet another avenue of pleasure closed."

Really, with people being cancelled for expressing an opinion, and sources of enjoyment like ice cream vans being banned, at a time when the public is under extreme economic pressure, it is as if we are returning to the Puritanism of Oliver Cromwell's Seventeenth Century Protectorate. (Christmas was also on Cromwell's hit-list.) One is reminded of H.L. Mencken's comment that "Puritans have the haunting fear that someone, somewhere, might be happy."

Neville Grant Stratheden Road



FROM JUST £999* A MONTH

- ✓ Expert childcare from 7:45 to 18:30 everyday
- ✓ Small classes taught by qualified teachers (during term time)
- ✓ Step up from day nursery and prepare your child to start school

A NURSERY PREP SCHOOL EDUCATION IS MORE AFFORDABLE THAN YOU THINK

*lunches and incidental costs extra, includes government early years funding

THE POINTER SCHOOL

<http://pointers.school>

WRISTWORTH HEATING & PLUMBING

Installation - Servicing - Repair

Tel: 07725 008280
Email: wristworth@hotmail.co.uk

GAS safe REGISTER

Check Out Our **NEW** Website: wristworthheating.weebly.com



ELL ARCHITECTS

WWW.ELLARCHITECTS.COM



TROJAN PRESS

PRINTING IN
BLACKHEATH
SINCE 1978

- BUSINESS CARDS • FLYERS
- INVOICES • LETTERHEADS
- BOOKS • BROCHURES
- CALENDARS • FORMS • INVITES •
- ORDER OF SERVICES • PROGRAMMES • A3 POSTERS

**1a Lizban St
Blackheath, London SE3 8SS**

Tel: 020 8853 2268

Email: info@trojanpress.co.uk
www.trojanpress.com

FEATURES

MEMORIES OF GAMBARDELLA'S Malcolm Hardy

The *WN* is sorry (belatedly) to report the death of Flora Gambardella in April this year. Many of our older residents will remember the Gambardella family. Numbers 47 and 48 Myrtle Place became the premises of one of the oldest and most celebrated Italian café/restaurants and catering businesses of South London, the firm



of A. Gambardella. Where's Myrtle Place, you may ask? It was the name of a small row of shops just West of the Royal Standard public house, and later became part of Vanbrugh Park. Since 1953 number 46 has been the Red Cross Charity shop.

Andrea Gambardella was born about 1886 in Naples, and arrived in London in the first decade of the twentieth century. His marriage to Maria Saveria Gallo took place in 1910 in Mile End Old Town, London. The following year in the census of 1911 he appears in Mile End Old Town North Eastern as Andrew Gambarella a hairdresser, aged 27, with his wife Maria, aged 19, assistant hairdresser. By 1927 (the date featured on the shop front) Mr Gambardella had acquired the Vanbrugh Park café (one source claims he had been an ice-cream maker) and it was to remain in his family until 2013. Over the years the address is variously given as both and/or 47 and 48 Vanbrugh Park and the evidence from one photograph is that the firm did occupy both premises. Gambardella's Anglo-Italian cuisine became famous – it included panini and ciabatta and of course Italian coffees and British fry-ups (breakfast served all day), and steak and kidney pudding and jam roly-poly with custard.

It has not been easy to trace the family history or the records of the company on-line. Andrew

Gambardella's death at the age of 77 was registered in 1977 Kent; that of his wife Maria aged 58 in 1951 London. From the company records we know that their unmarried daughter Adelaide, born 1 December 1917 in West Ham, was associated with the business as a director and secretary until shortly before her death on 1 December 1998. Their son Nicolo born in West Ham in April 1925 and his wife Flora De Cicco born September 1936, whom he married in 1968, were also involved with the business as directors, both resigning either before or after the Blackheath business was closed in April 2013. Sic transit gloria cauponi. Gambardella's became legendary. In the numerous web pages dedicated to it, various claims have been made for the café. For instance, some recall that the local musical entertainer Jools Holland was a regular patron, enjoying its egg on toast. Also that it was used as a location for the ITV drama series "The Fixer" of 2008-9



and also for the film "The Boat that Roared" in 2009 with Bill Nighy and Kenneth Branagh, but if so it was only as a minor rather than a main location. It was also claimed that Heinz used the café in 2009 for a two million pound advertisement for its Tomato Ketchup screened in June and August that year, though it is difficult to identify the café in the ad. Gambardella's was replaced in 48 Vanbrugh Park by the Scullery Café that opened in April 2014, using it very much as the Gambardella family had left it. This was again replaced by the present occupants, Boulangerie Jade. They have kept both the 1930s decor in the front room and the Gambardella name in white on black on its counter, and together with a commemorative inscription recording the 1927 opening over the entrance to its back room.

THE WREN LONDON SERIES

Talks explore Wren's grandest designs across the capital July – October 2023.

Christopher Wren was a child prodigy, who entered the University of Oxford at the age of 17 during the English Civil War. He became famous as an astronomer, mathematician, and inventor before he took up architecture in his thirties, which he taught himself. Wren was a polymath and intellectual, who is sometimes referred to as 'the British Leonardo'. He excelled in many disciplines, including geometry, meteorology, physiology, and drawing. As a child he made sundials, as a student he dissected bodies, and as an astronomer, one of his most remarkable achievements was identifying the rings of Saturn. Wren's legacy for us today is not only measured in the national heritage of the wonderful buildings he designed in Britain but also as an extraordinary example of what a combined education in science and the humanities can offer.

The Wren London Series is part of Wren 300, a year-long celebration of Wren's tercentenary, life and works. The Wren London Series starts at St Paul's Cathedral on 4th July in the Wren Suite, with speakers Shahed Saleem, (architect and Senior Lecturer in the School of Architecture and Cities, University of Westminster) and James Campbell (Professor of Architecture and Construction Theory, University of Cambridge; author of Building St Paul's, Thames & Hudson) in conversation with St Paul's Cathedral Head of Collections, Simon Carter. The talk

will consider the practicalities and process of constructing Wren's buildings, focusing on the remarkable craftspeople who made his designs a reality and underlining the collaborative nature



@Old Royal Naval College.

of design and execution, as well as exploring what it means to build a dome in a place of worship. On 5th July, a panel of speakers at Royal Hospital Chelsea, home since 1692 to the iconic Chelsea Pensioners, will host a unique conversation about health and wellbeing, "Broken by Age or War".

On 1st September, Uber Boat by Thames Clippers will host Wren by River, a unique one-hour boat tour led by Colin Thom, Director of the Survey of London, and a leading expert in London's architectural history.

At the Old Royal Naval College on 20th September, Simon Thurley (historian, Chair of the National Lottery Heritage Fund) will give a talk about Wren the Courtier, exploring Wren's position within Court under King William and Queen Mary, and his work for them including designing Greenwich Hospital (now the Old Royal Naval College) on commission from the monarch. Tickets <https://wren300.org/>

INVESTMENTS

PENSIONS

ESTATE PLANNING

STARKEY

FINANCIAL PLANNING

Contact us: 020 8853 7160
admin@starkeyfp.co.uk

2 Charlton Road, Blackheath Standard, London SE3 7EX

Independent and friendly advice from south east
London's top team of Chartered Financial Planners

Starkey Financial Planning Ltd is authorised and regulated by the Financial Conduct Authority



R.G. Austin

(Established 1963)



Heating Engineers,
Property Maintenance,
Electrics, Painting,
Decorating, Plumbing,
Central Heating,



Shower and Bathroom Specialists

2A Hassendean Rd, Blackheath SE3 8TS
Telephone: 0208 858 7359
rgaustintltd@gmail.com

Emergencies: 07738124344
email: rgaustintltd@gmail.com

PAINTING & DECORATING

Interior/Exterior/
Experienced Reliable Clean
Fully Guaranteed/Insured.
References available.
Free no obligation quote
and advice given

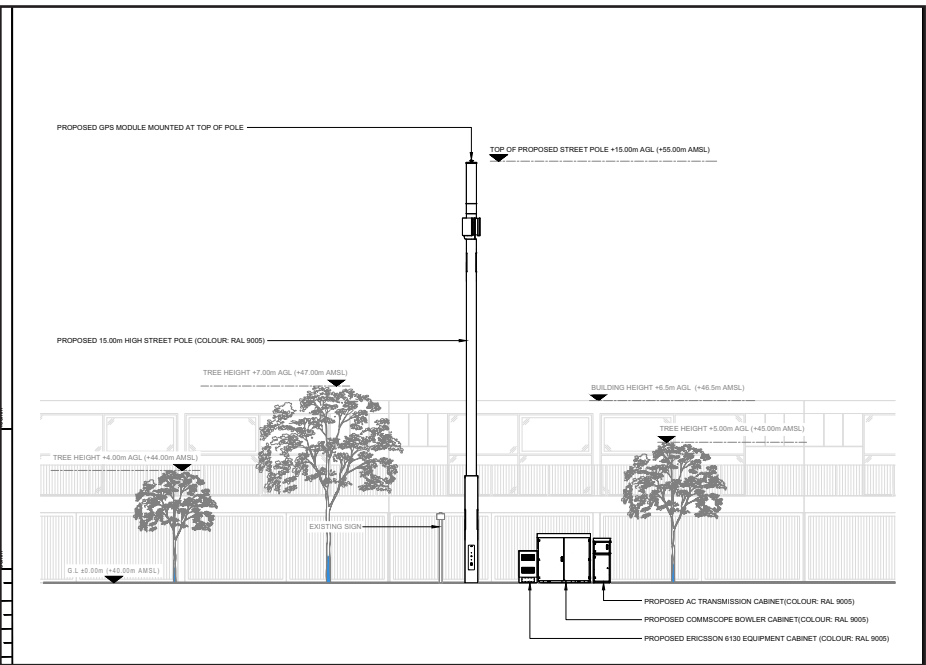
JOHN at JAMES & LAMONT
Office 020 8462 4646
Mobile 07802 535695
jamlam.john@btinternet.com

ENVIRONMENT

What another one? Residents object to 15m mast

There has been a spate of applications from a company called CK Hutchison Networks (also known as H3G) to install large and unsightly telecom poles in our neighbourhood. The first, in 2020, was for an 18m pole in a prominent position at the intersection of Hardy and Beaconsfield Roads. In June 2022, permission was sought for an 18m

telecom infrastructure nearby, which will provide all the digital connectivity offered by H3G but unobtrusively on top of the 8-storey Westcombe Court. In contrast, H3G proposes a 15m pole towering above the trees of Vanbrugh Park Road, with large cabinets on the pavement. One of the reasons given by the Council in rejecting the first



pole in Vanbrugh Park Road and later that year for a 20m pole on the green space at the apex of Batley Green. Each of these applications was objected to by numerous residents and by the Westcombe Society Environment Committee, and the Council refused all three applications.

application was 'its siting, excessive height, scale and bulk, and poor design would appear as highly visible and incongruous additions within the immediate street scene as well as the wider area to the detriment of the character and appearance of the immediate public realm and street



Photo: Mark Barnes

After the Council refused the 18m pole in Vanbrugh Park Road, the company reapplied, but for a 15m pole, which was again refused. In May this year, the company has yet again applied for a 15m pole in Vanbrugh Park Road, but this time opposite numbers 19-21 rather than opposite number 17. The applications appear generic, with no consideration to the proposed locations being in a Conservation Area or in the buffer zone of a World Heritage Site. The latest application does not mention that the O2 network has been given permission for

scene, the adjacent Vanbrugh Park Estate, the Blackheath Conservation Area, the Westcombe Park Conservation Area, the buffer zone to the Maritime Greenwich World Heritage Site and potentially the Greenwich Park Conservation Area'. The Council's strong words were welcomed by residents who hope for a similar response to the current application. So far there have been 78 objections, including from the Westcombe Society and the Blackheath Society.

A Brighter Garden for Westcombe Park Station

If you use Westcombe Park Station, you'll know that the raised beds along the westbound platform have been looking bright this spring. Thanks to Thameslink, which provided some new planting in 2021, and a small team of



Photos by A Robbins

volunteers, the garden has had a facelift. Daffodils and tulips put on a show in early spring, followed by bright red field poppies. Now geraniums are in flower, to be followed by Japanese anemones. Some of the overgrown shrubs have been pruned and are looking much healthier.

Watering is a problem, despite the station staff who kindly fill buckets when they are there. Last summer and this recent dry spell were hard on the plants. The group is looking at ways to make the garden sustainable in tough conditions, including using wildflowers and native plants. The volunteers generally meet on Wednesdays at around 1:00 pm for an hour. Every week, the group clears a surprising amount of drinks cans, disposable vapes, and bits of plastic. A plea: please don't leave your rubbish! Would you like to join in? Please get in touch via email at environment@westcombesociety.org or have a chat with anyone who's plucking sycamore seedlings out of the beds. There is a little training, to ensure safety for the gardeners and station users, but mostly common sense and enthusiasm are all you need, along with maybe a trowel and some stout gloves.



Photos by A Robbins

PLANNING APPLICATIONS

(See also
www.westcombesociety.org)

71 BEACONSFIELD ROAD
23/1739/CP
To construct single storey rear and side extension involving converting garage into habitable space.

TREE WORKS
13 SHOOTERS HILL ROAD AND
ANGERSTEIN LANE ref 23/1888/TC
To fell holly and crown reduce 5 times by 30%.



St Olave's Prep School



Contact us for further information or to arrange a tour

“ The quality of the pupils’ academic and other achievements is excellent ”
ISI Inspection Report

www.stolaves.org.uk. Call 020 8294 8930

WHATS ON

Charlton House & Gardens

Ottoman Journeys: Life & Afterlife in Greenwich
Mondays to Fridays 9:30am – 3:30pm,
Saturdays 9:30am – 2pm Free entry
Explore the connections between the Ottoman Empire and our borough today in this new exhibition.

Ottoman Ceramics Workshop with Fiona Veacock
Thursday 6th July, 6pm – 8pm
£50 per adult
Explore the traditional Ottoman colour palette, patterns, techniques, and art on clay with local potter Fiona Veacock.

Sunday Producers’ Market
Sunday 16th July, 1pm By donation
Come to Charlton House's back lawn for a producers' market every third Sunday of the month.

Holiday Explorers: Tiles through Time with the Ottomans
Wednesday 26th July, 10am, 11:30am, and 1pm
£3 per child aged 5-12
Find fun patterns in real Ottoman tile-work, then do it yourself on your very own clay tile to take home.

Summer Fête
Saturday 29th July, 11am – 9pm
Free entry (£10 per family for live history treasure hunt)
Stalls and family fun, including bouncy castles and a highwaymen treasure hunt. Plus, a street food night!

Holiday Explorers: Sweet as Marzipan with the Ottomans
Wednesday 2nd August, 10am, 11:30am, and 1pm
£3 per child aged 5-12
Discover the way Ottomans turned almonds into flowers and fruit, and then make some to take home.

Ottoman Geometric Art Workshop with Nelufa Chowdhury and Sofi Baig
Monday 7th August, 6pm – 8pm
£25 including hot drink & cake
Discover the geometric art of Islamic patterns, how they were used in the Ottoman period, and how to make your own.

Holiday Explorers: Busy Bees
Wednesday 9th August, 10am, 11:30am, and 1pm
£3 per child aged 5-12
What are bees so busy doing all day? We'll make our very own bee feeders to help our new insect friends do their work.

Holiday Explorers: Ancient Romans in Greenwich
Wednesday 16th August, 10am, 11:30am, and 1pm
£3 per child aged 5-12
Children aged 5-12 can join us at Charlton House & Gardens for crafts, storytelling, games, and more fun based on Royal Greenwich's history.

Sunday Producers’ Market
Sunday 20th August, 10am – 3pm
Free entry
Come to Charlton House's back lawn for a producers' market every third Sunday of the month.

Holiday Explorers: Butterflies
Wednesday 23rd August, 10am, 11:30am, and 1pm
£3 per child aged 5-12
Children aged 5-12 can join us at Charlton House & Gardens for crafts, storytelling, games, and more fun based on Royal Greenwich's history.

Holiday Explorers: Ancient Egyptians in Greenwich
Wednesday 30th August, 10am, 11:30am, and 1pm
£3 per child aged 5-12
Children aged 5-12 can join us at Charlton House & Gardens for crafts, storytelling, games, and more fun based on Royal Greenwich's history.

Plus, a Series of Friday Lunchtime concerts see website for further details:
<https://www.greenwichheritage.org/news/event-type/charlton-house/>

Arts Society Greenwich

The Making of the Met – The Grandest American Museum
Andrew Hopkins
Monday 10 July 2023
7.30 pm at James Wolfe Primary School, Royal Hill, SE10 8R2.
The temple of Dendur occupies the west wing of this museum, which was specially built to house this new arrival, gifted by Egypt to the United States in 1967 during the presidency of Lyndon B. Johnson. Another wing displays the celebrated early Italian Renaissance collection of Robert Lehman, scion of the now demised investment bank, while its expressionist holdings are one of the best in the world. Jayne Wrightsman donated all her fabulous Louis XIV furniture and bequeathed \$80 million dollars for further acquisitions. Countless other grandes of old and new New York society gave their prized possessions and paintings, and this talk examines how the Met, from its founding in 1870, was and remains the greatest and grandest museum in America.

Andrew Hopkins was Assistant Director of the British School at Rome from 1998 to 2002 and since 2004, Professor at the University of L'Aquila.

Mycenae House
Keep the children entertained throughout the 2023 summer holidays at Mycenae House with an array of activities and classes for families & children, including Music, Drama, Engineering, Games, Theatre, Coding, Concerts & more! Enjoy our Family Friendly Café Bar, Free Wifi and the great outdoors in Mycenae Gardens! Full listings via www.mycenaehouse.co.uk

Reach Out
Throughout the Summer the Reach Out are offering free sessions below - www.mycenaereachout.co.uk/
The Reach Out Project offers free activities for those who feel lonely and/or isolated. The activities are free, and we welcome donations to help support our project.

Mondays 1-3pm Board games, discuss current affairs and chat with NHS Occupational Therapists

Tuesdays 12-1pm Physical Exercise and Yoga for those with poor mobilities (note Exercise sessions on 20th will be at 12.30-1pm)
(No session on 29th August)

Tuesday 7.30pm (last Tuesday every month) Mycenae Music - Discuss music albums - meet at Mycenae House Cafe

Wednesdays 1.30-3pm Chill n Chat - a chance to meet our volunteers and have a chat

Wednesdays 2-3pm inclusive singing group for those with learning disabilities and support workers with Nightingale Music CIC

Thursdays 1-2.30pm Help with your gadget (till end of June) with Comfortably Digital and our volunteer Jon.

Thursdays 1-3pm 'The Reach Out Wellbeing Cafe' with monthly bingo, crafts and accessible yoga (ring for dates, see here www.mycenaereachout.co.uk/ or pop in and grab a leaflet).

The project is looking for donations for new and unused bingo prizes. Items cannot be collected. Please drop them into Deborah at Mycenae House.

Greenwich Theatre hosts an exciting summer season including in-house productions

Vincent River: Greenwich Theatre Presents the Thrilling, heart-breaking, and at times darkly humorous play by Philip Ridley.
Friday 23rd June – Saturday 15th July 2023
Bringing to life Philip Ridley's thrilling, heart-breaking, and at times darkly humorous play Vincent River, for a limited three week run, Greenwich Theatre presents their second in-house production of 2023. The Staging of Vincent River affirms Greenwich Theatre's continued return to producing, following their recent in-house productions by Caryl Churchill, Michael Frayn and Mike Bartlett. Hate crime, prejudice and the redemptive power of storytelling come together in Ridley's tense game of cat and mouse set in London's East End. This modern classic proved to be a huge success when it premiered in 2000 and was a West End smash hit in 2007 & 2018.

Starring Kerrie Taylor as Anita (TV - Hollyoaks, Where The Heart Is, The Bay) (Stage - Bad Nights and Odd Days and The Dumb Waiter and A Slight Ache at Greenwich Theatre) and Brandon Kimaryo as Davey (Studying at Guilford School of Acting) (BBC Film – Searching for Cowardice).

Director: James Haddrell Writer: Philip Ridley

Other shows on this summer at the theatre include **Abigail's Party**, running from 2-5 August, and then their next in-house show – a summer version of **Cinderella** from 18 August-3 September – visit greenwichtheatre.org.uk for more information and tickets.

BLACKHEATH/WESTCOMBE WARD COUNCILLOR SURGERY TIMES

Leo Fletcher, Mariam Lolavar and Christine St Matthew-Daniel
Details are below, please come, and say hello to us.
No appointments needed
1st Saturday of the month - 10am - 11am - Mycenae House, 90 Mycenae Road, London SE3 7SE
1st Saturday of the month 1.00pm - 2.00pm - Age Exchange, 11 Blackheath Village, SE3 9LA

WESTCOMBE SOCIETY EVENTS

MacMillan Fundraising Walk 17th September (details to follow)
MacMillan Coffee Morning 29th September
Chrysanthemum Tea 14th October Mycenae House 2pm
Quiz 25th November Mycenae House 7:30

Old Royal Naval College hosts Greenwich Summer Sounds, an exciting new London music festival

This July, the Old Royal Naval College in Greenwich, will host an exciting new concert series. Greenwich Summer Sounds is a new London music festival presented by IMG – the team behind Hampton Court Palace Festival and Hyde Park Winter Wonderland. World class music will delight audiences at this stunning riverside setting, with headliners Nile Rodgers & CHIC, Tom Jones and Kaiser Chiefs. This year the Old Royal Naval College is celebrating 300 years of Sir Christopher Wren, the famed architect who designed the iconic twin domes by the river. This an incredible and unique setting for a music festival, with beautiful river sunsets, an amazing atmosphere and a natural amphitheatre created by the Wren-designed buildings. Alongside the music programme, guests will be able to enjoy a range of delicious street food, and the chance to experience a first-class banquet dining experience in the magnificent Painted Hall.

Greenwich Summer Sounds
Tuesday 4th – Saturday 8th July 2023
Location: Old Royal Naval College, King William Walk, Greenwich, London, SE10 9NN
For tickets and further info visit: www.ornc.org

Royal Museums Greenwich to Hold Season of Play

Royal Museums Greenwich (RMG) will host a season of events dedicated to play from July to September 2023. The events will explore and celebrate play through workshops, trails, talks and activities for all ages. There will be events at all RMG sites, linking play with the themes of space, sea, and art, while also exploring how play can be used as a vehicle for children and adults alike to participate in museums and cultural spaces, as well as the world around us. www.rmg.co.uk/whats-on/national-maritime-museum/summer-play

Greenwich Industrial History Society

July 18th, 2023, Elizabeth Wiggans, ex-archivist Morden College. The College archive and its importance.
September 12th, 2023, Tracy Stringfellow, ex-CEO Greenwich Heritage Centre.

Charlton & Blackheath Amateur Horticultural Society (CABAHS)

Next meeting Monday July 17th 7.30pm, at Charlton House Old Library. Our speaker is Philip Oostenbrink, author and head gardener at Walmer Castle, talking about Jungle Planting. Please contact cabahshortisoc@gmail.com if you would like to come as a guest, £2.

MARKET PLACE

COUNSELLING

HOLISTIC COUNSELLING
(over 20 years experience)
For Anxiety – Depression -
Relationship problems & Other
Issues
1 full hour session £50 –
Concessions available
Please contact Brenda T: 020 8858
5969 E: bmbt@btinternet.com Or
Linda T: 020 8858 1991 E: lin-
dachenderson45@gmail.com
W: holisticcounsellingandyoga.com.

THERAPIST

No problem is too big or too small
I'm a locally based BABCP regis-
tered CBT therapist and couples
therapist offering sessions online and
in person.
For a 15 minute phone consultation
contact me via hello@Sasha-
Louise.com or 07889755299.
Website - www.Sasha-Louise.com

GARDENING

**PARADISE TREE SURGEONS
AND LANDSCAPING**
www.treesurgeonsblackheath.co.uk
admin@reesurgeonsblackheath.co.uk
Text 07789 700777

HOLIDAYS

WHITSTABLE
WEEKENDS/WEEKS
Sea wall house between
OysterWarehouse and harbour.
Sleeps 5. Fantastic views.
Tel: 8858 6578 or 01304 367443

TUITION

**MATHS & ENGLISH TUITION
TO GCSE AND PREPARATION
FOR 11+ AND INDEPENDENT
SCHOOL SELECTION TESTS**
by qualified and experienced teach-
er.marystuition.com
Mary Bauckham 07709 089 838
marybauckham@gmail.com
**HOME SUPPORT AND TRAIN-
ING FOR YOUR DIGITAL
DEVICES**
Need some help with computers,
phones and tablets? I'm a DBS
checked IT trainer with 21 years
experience, friendly and patient.
£45/hour (£20 call out), discounted
for block bookings. To discuss
options, call Paul on 07958 251 448
or email
paul.clayton@soulchip.co.uk
MATHS TUITION
Qualified and experienced secondary
teacher offers tuition to GCSE level.
Call Miv Whitaker: 07745 816338;
or email miv.whitaker@gmail.com

CARPENTER

Specialist in
refurbishment, repair and
replacement of
sash windows,
front doors overhauled.

Call
MALCOLM TIERNEY
07775 657371

**PRIVATE TUITION: CEM, GL,
ISEB, 11+, KS2 English/Maths**
Josephine Elliss MSc, PGCE, 20
Years experience. Contact
Jo@josephineelliss.co.uk or
0771 253 0218
**ADULT & CHILD IRISH DANCE
CLASSES - SE7**
07707 100 521
www.mulvihillirishdance.com
info@mulvihillacademy.com
No experience needed
COME DANCE WITH ME dance
classes for 50s + Come and have fun
discovering that you can dance!
Explore different dance styles while
exercising, improve your flexibility,
strength, balance, and movement
memory, make new friends. Fridays
at 11am-12pm, Mycenae House,
Blackheath. All welcome, regardless
of experience, ability, and mobility.
Information, contact Joanna Clare
tel 07709952215
email joclare@hotmail.it

SERVICES & TRADE

**INTERIOR DECORATOR &
CARPENTER** with over 20 years
experience. A member of the guild
of mastercraftsman. Free quotes &
friendly advice on all your
decorating requirements. Local
references available.
Tel: Ashley Greaves 8858 2981
**PAINTING PLACE
DECORATORS**
Interior & Exterior
Female Painting Team
We cover South London
Call +44795 808 4728
email:Paintingcolour15@gmail.com
www.paintingplacedecorators.co.uk
A MAN AND A VAN
Tel: 020 8858 3889 Mobile: 07885
917842
**LOCAL LADDERLESS WINDOW
& GUTTER CLEANING SER-
VICE**
Call/Text Mike 07791 465052
**DIY PAINTING DECORATING
& LANDSCAPING.**
Parts of **CLEANING** Years of expe-
rience Call 075389 3162
email: deesbusybees@hotmail.com,
UPHOLSTERER
Specialising in traditional upholstery.
www.suemaysupholstery.net
or phone 07932 040 298
DV SERVICES
PLUMBING & HANDYMAN
Blockages & Drains,Radiator valves
and radiators not working, Change
and fix toilets, sinks, showers & taps
In bathrooms, toilets and kitchens.
We can fix it!
Call Daniel on: 07904 880 448
T.TA ELECTRICS. NICEIC
Approved Contractor, Quality
Tradesman. All
electrical work undertaken, Fully
Insured & Guaranteed. 24HR
EMERGENCY ELECTRICAL.
Please call Tony on 07961 509 403
OR 020 8488 7425
OR info@ttaelectrics.co.uk
HOMEWORKS All-round handy-
man for those DIY's you have no
time for! General repairs. Painting &
Decorating. General Carpentry and
flooring. Flat-pack assembly. Patio
and deck cleaning. No job too small.
Contact Matthew Barron 07903
388658
**ELECTRICIAN / ALARM
ENGINEER**
No job too small TMIET registered.
Call 07879 011792

WESTCOMBE CLEANERS
I'm a friendly, hard-working &
organised domestic cleaner. Regular
or single services. Competitive rates.
Additional tasks. I love my clients
to be happy. Phone 07746 291617
**TOM ELLIS BESPOKE CARPEN-
TRY**
Alcove bookcases, cabinets,
wardrobes and window seats. M.
07510 869 947
**MARK CHEESEMAM, LOCAL
CARPENTER AND JOINER
WITH OVER 30 YEARS
EXPERIENCE.**
All Aspects Of Carpentry and
Construction Executed Considerately
and to a High Standard. Both
Traditional and Contemporary
Design Joinery - Cupboards,
Window seats, Floating Shelves,
Engineered Flooring Fitted Etc.
Also Locks Changed. Sash Window
Overhaul. If you have Rotten
Window Sills, Door Frames Etc.
rather than replace them with the
associated upheaval and expense,
why not have a Timber/Resin
Repair? Please Call Mark on 07767
456131 or H: 020 8854 4028.
ANGELO, ELECTRICIAN
No Job Too Small
T - 020 87616012/ M - 07850 767
283
Email - angelo@glennies.net
Part P Certificated
18th Edition & JIB Registered
LOCAL CARPET CLEANER
Specialist in cleaning Carpets,
Upholstery & Rugs.
www.carpetcrew.co.uk
Phone 07828503132
**DAMP ASSESSMENT, ADVICE
AND TREATMENT** Impartial and
accredited Damp and Timber expert.
Call Tom Ellis on 07510 869947.

RECRUITMENT

PRIVATE P/T CARER Few hours
weekly Female/own car preferable.
Book appointments and other
general admin.
Hand over available for right
candidate
Call Beverley on 020 8305 0149



DISCOUNT!
(When you show your
Westcombe Society
membership card)

PARES FOOTWEAR - Blackheath
10% OFF shoes over £20 excl sale
stock.
**BODYWORKZ - THE FITNESS
CLINIC**
109 Humber Road.10% OFF all treat-
ments £30+ except Chiroprody;
exc.Saturdays.
ROYAL NEPALESE RESTAURANT
(Station Crescent) 20% OFF meals for
two or more Sunday - Thursday.
CORIANDER RESTAURANT (Station
Crescent) 25% off bookings Sun/Thurs.
COTON & HAMBLIN LENS CLUB-
Complimentary standard coated single
vision lenses worth £50 when purchas-
ing complete spectacles. T's & C's
apply.
**BLACKHEATH EYECARE
OPTICIANS**
Money-saving Eyeplan membership
offered
TROJAN PRESS 10% OFF all
quotations
WESTCOMBE DRY CLEANERS
10% discount on Dry Cleaning. Cannot
be used in conjunction with any other
offers.
A * DRIVING SCHOOL £5 discount
on the price of one x 2 hour lesson
KAREN STOREY OF HOMESPACE
offers members 10% discount on
decluttering & homestaging : 07951
191086
**SHENDA FALVEY PERSONAL
TRAINING, STOTT PILATES &
BOOTCAMPS**
M: 07887727335

BLACKHEATH HIGH
SIXTH FORM
GDST

*I will develop
the next vaccine*

Where girls boldly go
blackheathhighschool.gdst.net

Sixth Form
Open Evening:
11 Oct
Book Now

Scholarship and Bursary places available - apply before 31 Oct