

Westcombe NEWS



Free to 3800 homes, in libraries and shops and online

July / August 2022 No.6

Hope springs eternal in the human breast;— Alexander Pope, An Essay on Man

49 YEARS OF THE WESTCOMBE NEWS BUT WILL IT REACH 50? NEW EDITOR URGENTLY NEEDED

WESTCOMBE NEWS

JUNE 1973 NO 1

PEOPLE

INTRODUCING: The Committee of the WESTCOMBE SOCIETY, which was elected at the first meeting on May 8th at Kidbrooke House, Mycenae Road.

CHAIRMAN	TOM CROWE	13 Vanbrugh Fields
TREASURER	ARTHUR MELLISH	19 Foyle Road
VICE CHAIRMAN	JOHN AYLING	Kidbrooke House
SECRETARY	Hilary Patrinos	81 Mycenae Road

CONSERVATION ORGANISERS	DEREK FREEMAN 71 Beaconsfield Road ANNA TOWNEND 2 Lynsdale Close ARTHUR ROLFE 55 Parkside ROGER RAMSEY 12 Coleraine Road
STREET WARDEN ORGANISERS	ALAN MILLS 24 Humber Road ERIC WILLS 1 Humber Road GRACE MORRIS 19 Vanbrugh Park MARGARET SMITH 12 Vanbrugh Hill
ENTERTAINMENT	BRENDA LE PAVOUX 27 Foyle Road
PRESS	PAT DODSON 99 Humber Road
NEWSLETTER	ANTHONY RENOUF 37 Coleraine Road
VANBRUGH WARD COUNCILLORS (EX-OFFICIO)	Cathy Brook 49 Haddo House SE10 Michael O'Toole 169 Griffin Road SE18

SPOTLIGHT ON STREET WARDEN ORGANISERS

Street Wardens are people who agree to give a specified amount of time every week to some kind of activity along their street, and these 3 Westcombe Society Ctte members help to co-ordinate their time and effort:

<p>Alan is a Computer Scientist, married, and has lived here 3 years; he is setting up the CAR OWNERS REGISTER, and leads the SW committee. ALAN MILLS (858 9482)</p>	<p>Grace is a Play-Group Leader, has 4 children & 8 grandchildren, and is setting up the HOUSEWIVES REGISTER. GRACE MORRIS (858 0986)</p>	<p>Eric is a retired Local Government Officer, married, and has lived here over 30 years; he is setting up the VISITING ROTA for O.A.P.s ERIC WILLS (858 1900)</p>
---	---	--

Here we have copy of the First Issue of the Westcombe News from 49 years ago.

Who knew that it would be developed into the publication that we have today.

Also...who knew that an acre of land in Westcombe Park would sell for over £100,00 in 1973 and that pinch points would be placed at the junction of Vanbrugh Fields and Maze Hill to discourage 'thundering' lorries. Some problems don't go away they just move elsewhere!

The Westcombe News, has been a source of interesting and useful information and is delivered to all residents in Westcombe Park (not just to our members) many of whom do not have access to the internet.

But there is a serious point to this article.

We are in need of a new volunteer editor.

Anne Williams wishes to move on and has done a sterling job over the last two and a half years (much of it over the pandemic) in ensuring that the paper was produced as normal over this very difficult period. Our grateful thanks to Anne.

So 49 years after the first issue is this to be the last?

If you would like an absorbing and rewarding volunteer job you could come to the rescue of the Westcombe News and help keep this much valued community newspaper in print.

Past editor Neville Grant says "I found it enormously rewarding...you get to meet so many people, hear so many stories and you feel a great deal of satisfaction to see the work you and all the people who

contribute have done turned into a newspaper almost overnight".

Ann Williams says about producing the paper "it's hard work but creative" and Marilyn Little, this edition's guest editor adds "it is really enjoyable putting the paper together using contributions from a very varied range of people".

The editor will work within a team to plan, revise and co-ordinate material for publication together with input from the Westcombe Society.

The editor would also work on the layout of the paper and liaise with the printer.

Journalistic experience would be useful but is not essential as assistance by a previous editor is available and training will be given on our easy-to-use publishing tool (Quark). We can also provide a computer. This is a voluntary position but expenses will be paid.

If you are interested please get in touch with Marilyn Little by emailing info@westcombesociety.org or calling 07939 386215.

Similarly if you know someone who may be interested outside our delivery area please share this information with them.

Myenae House & Tramshed present

FREE Family Arts Festival

Myenae House & Gardens
Blackheath Standard, SE3 7SE

Childrens Theatre Shows

Boudica + The Green Knight - Geese Theatre / Wagon of Dreams - Jelly Fish Theatre
11:30am 2pm 1.00pm & 3.30pm

All Day Kids Arts Activities

(Bo Peeps Pre School)

Craft Stalls

- The Corner at 96

Live Music

- SWAP Musicians

Cafe/Bar/ Ice cream

Sunday 24 July

11 - 4.30pm

More Details & Ticket Reservations
www.tramshed.org/whats-on/family
www.mycenaehouse.co.uk

ROYAL BOROUGH OF GREENWICH

PLACES

RECORD £100,000 AN ACRE IN WESTCOMBE

Westcombe has the strange privilege of being in the first ward, Vanbrugh, out of the 30 in the whole Borough of Greenwich, in which just one acre of land has been sold for over £100,000. It was the Vicarage on Langton way, 1.05 acres, which was bought by Page Estates for £115,000. They plan to demolish the Vicarage, and build accommodation for over 60 people, including special provisions for Old Age Pensioners.....

ROAD CLOSING

Plans are afoot to place pinch points at the junction of Vanbrugh Fields and Maze Hill. With a limit on width of 6ft.6ins, it is hoped that the thundering lorries down the Hill at all hours of the day will be reduced.....

THOSE LORRIES

QUESTION TIME

A complete detailed house-to-house survey of basic amenities such as sinks, baths, and loos is being carried out under the order of Greenwich Council, and Westcombe residents will soon be receiving very full questionnaires on these matters.....

PROPERTY MAINTENANCE SERVICES REG

40 VANBRUGH HILL, BLACKHEATH S.E.3 7UF

TEL: 01-858 9099

Partners: H. C. WREN G. M. WREN

Plumbing Building Decorating Electrical

R. A. FINCH

83 CHARLTON LANE,

CHARLTON,

LONDON, S.E.7

TELEPHONE: 01-819 4097

HEATING & PLUMBING ENGINEERS & CONSULTANTS

ADAM-LINDSAY DESIGN 01-8533 Decorating & Design

POLICY

If you've read this far, you will have realised that the Westcombe Society has just come into being, if you are one of the few that didn't already know. So you will ask: What is the Westcombe Society about? Well, it is about the Westcombe community, just that and nothing more.

If we in Westcombe are to be more than just rows of houses, and rows of people living in them, we must plan to be a lively, active, and friendly community - and you have seen that we are interested in people and places by this letter, which you will receive every month. A community is as beneficial and thriving as the people in it, and we hope that the Westcombe Society, with its joint aims of neighbourliness and conservation, will go some way to achieving both these things.

There is a Wine and Cheese party next Friday, 15th June - Do Come

GREENWICH 1973 FESTIVAL KIDBROOKE HOUSE COMMUNITY CENTRE Victorian Village Green 6.30 to 11.00pm Open Air market-Dancing on the Green-stalls & shops

WESTCOMBE SOCIETY

WESTCOMBE NEWS

PUBLISHER
The Westcombe Society
c/o 163 Westcombe Hill, SE3 7DP or
info@westcombesociety.org
Chair: Marilyn Little
Tel: 0208 853 1312

GUEST EDITOR:
Marilyn Little

EDITORIAL TEAM
Westcombe Society
Polly Morgan

**ALL EDITORIAL
CORRESPONDENCE/PRESS
MATERIAL TO BE SENT TO:**
wnews@westcombesociety.org
Deadline for September copy
18th August

SUB EDITOR
Annie Grey

ENVIRONMENT
Editor: Maggie Gravelle
All comments and queries to
Emily Norton: 0208 853 2756

ADVERTISING
Jenny Senerat
advertising@westcombesociety.org
Deadline for Advertising:
16th June 2022

DISTRIBUTION
Emily Norton and volunteers
Tel: 0208 853 2756

PRINTING
Trojan Press.
Email: dave@trojanpress.co.uk
www.trojanpress.com

The views expressed in the Westcombe News are not necessarily those of the Westcombe Society or of the Editor.
We take all reasonable precautions to protect the interests of our readers by ensuring as far as possible the bona fides of our advertisers but cannot accept any responsibility for them. Any complaints should be addressed to the advertiser.
To access back numbers (in colour) go to:
<http://www.westcombesociety.org/westcombenews>

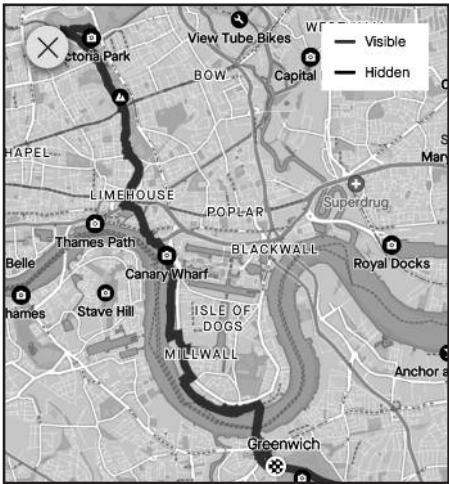
WESTCOMBE SOCIETY MEMBERSHIP

**We would be delighted to
receive your support and
annual membership
subscription.**

**Family membership £12.
Individual membership
£8. Senior Citizens and
Unwaged £4.**

Please send payment to:
**Christine Legg, 69 Mycenae
Road, London, SE3 7SE or
email:**
membership@westcombesociety.org

MACMILLAN CANCER SUPPORT CHARITY WALK. SATURDAY SEPT 24 FROM GREENWICH TO VICTORIA PARK



There's just one place to be on Saturday September 24 at 9.30 am - the Cutty Sark, Greenwich, where this year's Westcombe Society charity walk for Macmillan Cancer Support kicks off. The route is a visual and historic river / canal treat ending at beautiful Victoria Park. The walk is about 11 miles long, and takes 4 hours at a steady pace. It's mostly on the flat, ideal for all ages, and in parts is enough off the beaten track to make you feel like you've discovered secret London. We set off through the Greenwich Foot Tunnel and turn left to begin a sensory delight that includes riverfront scenery, East End cottages and shops, and then the magic of the Regent's Canal, a waterway that cuts across London. We pick up the canal at Limehouse and enter a world of gently rocking houseboats, swans, lush greenery shading the path, and tranquillity. At the end of this peaceful oasis is Victoria Park with its splendid lake with its fountain and striking sculptures rising out of the water. Chill and refuel at the café overlooking the lake. There are toilets at the Mile End Leisure centre, and at the Victoria Park café. If you wish to leave the walk before it finishes there are options along the way to head towards main roads and buses. Do join us – such a relaxing way to help a worthy cause. It costs £10 per person with all money going to Macmillan. A bottle of water will be provided. To book your place call Caroline on 020 8853 0948



Chrysanthemum Tea

We are beginning to plan our next Chrysanthemum Tea for Senior Citizens and are updating our Invitation List. We will be able to add some names to the list. If you are a senior citizen who lives within the Westcombe News distribution area and would like to be invited, please send your name, address and telephone number to Caroline Owens, 84 Beaconsfield Road, Blackheath, SE3 7LQ. We will endeavour to accommodate all those who apply.

Westcombe Society Events

In addition to the programme of Events previously published we are having an Additional Event on Sunday, 24th July at Mycenae House, from 11.00am - 4.30pm. At the Mycenae House event entitled FAMILY ARTS FESTIVAL the Westcombe Society will have a stall and provide activities for children such as an egg & spoon race; sack race; and tug of war. Do come and see us there, perhaps you will be lucky on our Tombola too! Following that will be the two events in aid of Macmillan Cancer Care in September: firstly our Annual Walk on Saturday 24th leaving the Cutty Sark at 9.30am. Please book in advance at 0208 8530948 or r.c.owens@btinternet.com so that we do not leave you behind! Then on Friday 30th we shall have our Macmillan Coffee Morning at Mycenae House from 10.30 - 2.00p.m. There will be cakes to eat there and to take away, plus sandwiches for those who would like to join us for lunch. I do hope you will be able to support one of these Events. **-Caroline Owens**

Quiz

On 21st May The Westcombe Society held another very popular Quiz Night kindly organised for us by Robbie Swales. Ten teams of six people answered questions on many topics of general knowledge, as well as identifying photos of various landmarks in London. Part way through the evening we paused for a delicious supper of fish & chips, and to buy Raffle tickets. At the end of the evening the winning teams received their prizes. We all went home after a most enjoyable evening looking forward to our next Quiz Night later in the Autumn.

We are very grateful to our printer Dave Mayes for his valuable assistance in laying out this issue of the Westcombe News.

Convent



How lovely it is to see the old photo taken of a Nun at her Convent, premises now known as The Steiner School and Mycenae House Community School. The Little Sisters of the Assumption Convent was housed in Woodlands House, in the 1930's to 1960's and they built Mycenae House as a Novitiate House. Woodlands House was built around 1774 as a country home for John Julius Angerstein. On his death in 1823 his art collection was saved for the Nation and formed the nucleus of The National Gallery. His son John Angerstein inherited the house and lived there with his family, being elected as MP for Greenwich. Prior to Woodlands becoming a School, it was purchased by the London Borough of Greenwich and used as an Art Gallery for many years, with the Local History Library on the first floor. There must be many readers who have lived in Westcombe Park since the 1950's and 1960's and know of the changes that have taken place since then. If you have, please send your memories to the Westcombe News as so many of us would be delighted to learn more about the area in which we live.

Advertising Rates for Display Adverts in the WN

Size	Per Issue	Five Issue Discount
Standard 6cm x 6cm (one column wide)	£40	£185
12cm x 6cm (horizontal or vertical)	£63	£290
18cm x 6cm (horizontal or vertical)	£89	£405
12cm x 12cm	£115	£515
For further details please contact: Advertisingmanager@westcombesociety.org		

NEIGHBOURHOOD

Jubilee Party Celebration

The first street party held in the Maze Hill cul-de-sac was for the Queen's Silver Jubilee in 1977. All the residents were determined to make it a resounding success and as a result the cul-de-sac street party has become a tradition. Florrie and Harry Wilcox flew the Union Jack from the flag pole in prime position at the front of their house. They also displayed two huge polystyrene figures of a lion and a unicorn, at least six foot high, which were displayed on all future royal occasions. Alfie Knott's piano was dragged up the hill for singing and 'Stripping the Willow'. The Platinum Jubilee was celebrated with equal enthusiasm and although Florrie and Harry are no longer with us their flag and pole were passed on to the new house owners so it was still flying proudly over the proceedings! Delicious food and drink, as usual, was shared and, as for the Silver Celebration, there were wonderful cakes including very up to date red, white and blue macaroons! Neighbours and friends included the recent addition of a six week old baby together with residents who had lived there for over fifty years. Tugs of war were organised with much cheering. New introductions were made, friends and neighbours exchanged news and children made new friends. For some this was a novel experience, for others the opportunity to continue with a tradition that unites and brings joy to the whole community. Those present will ensure that there will be many future Maze Hill cul de sac street parties.

J J Aune



Photo: Aidan Wardle for The Blackheath Society

Blackheath Lights Up for The Queen

On Thursday 2nd June an estimated crowd of 2,000 gathered to celebrate the Queen's Platinum Jubilee by lighting a beacon at the Hub in the centre of Blackheath. Many brought picnics or refreshments and were entertained by a varied assortment of local choirs who sang music from each decade of Her Majesty's reign – from gospel to musical theatre. At 9.30 the beacon was set alight after some heartfelt words by the Young Mayor of Lewisham, 15-year-old Rosanna Campbell. The event was organized by the Blackheath Society and supported by them and Lewisham Council. Paul Watts, Chair of the Blackheath Society said: "Our thanks to Rosanna who shows us all that it's possible to serve your community at any age - 15 for her and 96 for the Queen".

Jane Wilson

Can you be a Befriender?

It only takes a few hours per month to make a huge difference to an older person's life. We have exciting opportunities for volunteer befrienders to be part of our successful volunteering project in the Royal Borough of Greenwich. Befrienders are people from all walks of life so by sharing a few hours per week of your time, life experiences, skills and interests with an older person you really can make a difference in their life. Everyone has something to give. With a genuine interest in older people and the motivation to provide support, you will learn what a truly rewarding experience volunteer befriending can be. We will train you, match you with an older person and support you every step of the way.

Interested in finding out more?
For further information please contact:-
Lynda Munns - Volunteer Coordinator
on 01322 336086 or 07903 043363 or email
l.munns@ccsel.org

Open Gardens Festival 2022

Jon & Stewart Weaver-Snellgrove's garden in St Johns Park

You are warmly welcomed into this garden by its lush green vibrancy and the holistic Ibiza vibe. The decking area makes you question whether you wanted to sit and meditate or relax with a martini. Neat box borders in both the front and rear garden add interest and the simple yet versatile lawn is bordered by sophisticated galvanised sage-green raised beds, each containing an array of impressive home-grown vegetables. These range from potatoes to the most wholesome-looking runner beans. The deep borders opposite contain an interesting and colourful mix of shrubs and perennials. The attractions in this garden are aplenty. As you make your way through the willow edging and rose archway, the manicured lawn gives way to an enchanting wilderness full of all forms of life, from the blue tits who live in the little wooden houses in the trees, to the buzzing of bees in the hive down below. To the side there is a small green pond literally hopping with frogs who watch as you amble past into the 'wicker man section'. In here you will find a very charming wire man who has pearls for toes and antique love seats. This is a garden that caters for nature and art lovers alike. Children (and adults) would love to run through this enchanting, magical world taking in all its unique wonder. It was a truly calming and healing experience.

Lizzie Cooper



Letters

Dear Westcombe News,

Residents are hoping for a council solution to a seriously blocked Colomb Street pathway !!
39 residents from the upper area of Colomb Street's petition to Greenwich Council requesting a solution to a seriously blocked pathway is being heard at Full Council 29/6/2022 .

Currently prams, buggies, wheelchairs , mobility scooters, walking sticks, cannot access the main road, local shops and transport facilities. Visitors are unable to visit family and friends and neighbours. Accessibility is the issue. There is a council parking ticket machine in the street so anyone is able to buy a ticket to park in the street and access local facilities. Residents, visitors and neighbours are hoping the council will go ahead with and find funding for a recently designed council road alteration solution considered suitable by the council's Traffic Dept.

Promoting 'Access for All' is such an important priority in providing 'well-designed, sustainable, healthy environments that promote the mobility and wellbeing of residents' within the expressed priorities of the new Cabinet councillor responsible for this area Averil Lekau. Residents are hoping that work can go ahead on this important community matter with speed.

Barbara Ward ward.barbara@mac.com


Lead Petitioner , Colomb Street petitioners
(39 residents signed the petition from the upper part of Colomb Street, Walnut Tree Road and Calvert Road and many more offered their support since the petition was submitted in March of this year).

Dear Editor

Geoff Brighty, a familiar face to be seen around Blackheath and Westcombe, has been a Councillor here a few times - he represented Kidbrooke Ward from 1982-1986 and Blackheath and Westcombe from 1990-2022. He was Chair of Greenwich Conservatives from 2012-2016 and Council Whip from 2018-2022. He is well known for his knowledge and willingness to actually get something done to resolve difficult situations. If there was ever a problem and people said 'What shall we do?' the unanimous reply was 'Ask Geoff' as he always showed an interest in peoples' local problems and helped, regardless of political persuasions. He helped with planning problems, traffic complaints and for other situations such as assisting a woman who had been living in a damp flat for many years. He regularly attended meetings and rarely missed the Panel meetings where the Wards priorities on safety issues were agreed with the Police. He has been a member of Greenwich Council for many years until he recently lost his seat in the last local election. It is a shame that national politics can sometimes overshadow the work of our local Councillors who do such a great job for the local people in their Wards. Geoff Brighty will be a great loss and sadly missed. Thank you Geoff.

Patricia Eskriett Gillard.

Welcome to the Healing Path




Blackheath Complementary Health Centre

*Celebrating 22 years
serving the community with
alternative and complementary medicine*

184-186 Westcombe Hill
London SE3 7DH
0208 293 5380 | info@healingpath.co.uk
www.healingpath.co.uk

*A team of experienced & dedicated
professional practitioners,
therapists and teachers*



Acupuncture	Massage
Aromatherapy	Nutritional Medicine
Chiroprody	Osteopathy
Counselling	Psychotherapy
Gong & Sound Baths	Reflexology
Herbal Medicine	Reiki
Homeopathy	Sound Healing
Hypnotherapy	Tui na
Iridology	Yoga

FEATURES

THE STAMENS PROJECT

WN Reporter

Stamens has been advertising in Westcombe News for a number of months. Wanting to know more we approached Father Francois, a local resident, who was instrumental in establishing the project and he told us all about it.

Learning that the officers in an African women’s prison were using the distribution of Sanitary Pads (SP) to secure favours for themselves from the prisoners, he asked a UK-based acquaintance - an Anglican priest who was himself African - to visit a local missionary on his next visit to discover if this was true. When the news came back that it was, Francis started collecting money to enable SP to be provided for those in need who were not receiving them.

Subsequently, attending a church conference in Nairobi, he met Margaret Mercy Onyango who was assigned to look after him. Held in the immediate aftermath of the terrorist attack in the Westfield Centre in Nairobi in which several innocent people were killed, the Kenyan hospitality practice of providing every guest/visitor with a companion was even more important than usual.

Talking to Mercy, he discovered that much of her Ministry was with young people in West Kenya, about 200 miles from Nairobi, in Bondo. She explained that schoolgirls in many parts of Africa are handicapped in their studies because they can’t afford to buy SP, and consequently have to stay at home. This means potentially losing thirteen per cent of their school-time, which is regarded as a serious misfortune in Africa!

So, between them they created Stamens to alleviate the problem. It proved such a success and generated so much interest here in the United Kingdom and elsewhere in the world, that it was quickly turned into a ‘Registered Small Charity’, under the HMRC rules so that it would be eligible for GiftAid.

Using funds donated by generous individuals, Stamens allows Mercy Onyango and her Ministries to buy sufficient SP to meet the needs of 600 schoolgirls in Bondo who face this predicament every month, enabling them to continue their education without interruption. Local schools also benefit because absenteeism is significantly reduced.

For the present, Francis says they intend to stay a Small Charity and continue to share their experience and know-how with others in the hope it will encourage more small charities to be funded in Kenya - and perhaps elsewhere too. The success of the project may well necessitate becoming a much larger Charity, fully registered with the Charity Commissioners in the future. As the SP were purchased in Africa and delivered to the Margaret Mercy Mission for distribution, there is even the suggestion that a small industry might be set up to manufacture them.

The best way to appreciate Stamens is

see the impact it has. This testimony is from a former pupil of Mercy Onyango, who heard about the Stamens Project and Mercy’s Ministries and wanted express her gratitude for Mercy’s work and the provision of SP at her school. Below, is the testimony of one of the girls who was sponsored by MARGARET MERCY MINISTRIES and also benefited immensely through the STAMENS PROJECT which provides sanitary towels to various schools in Bondo sub county of Siaya county in Kenya, Africa.

A testimony of a lifetime

You really helped me a lot together with my younger sister. My mother used to work for people as a house girl but through you we had food to eat, clothes and pads. My mother was not able to buy me pads and you always provided them for me and my mother always benefitted from the pads you gave me. You really helped our family a lot.

I remember when you were being ordained as a pastor in Masala church. I



wanted to be with you. Luckily, I got someone to pay my college fees and finished. I am now getting some work here and there trusting God to continue to bless me. May God bless you to continue blessing and mentoring others.



NEWSBRIEF

More2Riverside Nursery Greenwich achieve Outstanding Ofsted, to make it a double, joining their sister nursery **More2Childcare** to become the only two privately owned Ofsted Outstanding Nurseries in the SE10 postcode area (as of 6th June 2022) since Ofsted started to inspect under the new statutory framework (introduced in September 2021).



Change their world for £2 a month...



...that’s the cost of providing a school-age girl in Africa with sanitary pads for a month. Without such protection, girls often miss lessons and can lose over two month’s education every year.

A small group of individuals provides sanitary protection in Kenya for up to 600 girls every month. We are now seeking to create a regular donation base of £400 a month (to achieve a maximum of £5,000 a year) to continue this work into the future.

Do you have £2 a month to help?

Stamens is a ‘small charity’ [registered under HMRC for GiftAid] based in Greenwich - 100% of the donated money is spent on the mission, which has no administrative costs.

To find out more or to set up a £2 monthly donation, please visit www.stamens.org.uk

Wild Westcombe – Let’s Make It Happen!

When my wife and I moved to our house in Humber Road in 1986, house martins used to nest each summer in the eaves of the houses on Station Crescent. We’d marvel at their intricate aerobatic manoeuvres as they gathered nesting materials and hunted for insects. Sadly, the house martins are long gone, their disappearance part of a worrying trend that is affecting so much of our wildlife nationally and locally. Sights that used to be common are now much less so.

It’s worth considering questions such as: how many butterflies have you seen in your garden this summer – and of how many different species? (In my case, only a handful and only three species.) If you leave a window open at night with the light on, how many moths or other insects do you find coming in? (None.) How many swifts have you seen screaming over the rooftops this year at any one time? (A maximum of three, when even just a few years ago it would have been closer to ten.) When did you last see a hedgehog? (I’ve never seen one locally.) Or a dragonfly? (Even the damselflies that hatch in our garden pond each year have been absent so far.)

We are fortunate to live in an area that has a lot of tree cover, a lot of private gardens and some fantastic open green spaces on its fringes (Greenwich Park, Blackheath, Vanbrugh Pits, Westcombe Woodlands and more). Wouldn’t it be wonderful to use these natural assets as the basis for a collective effort to help boost our local



wildlife and biodiversity – a “rewilding” of Westcombe Park?

I’m not, of course, suggesting that we reintroduce wild boar to Mycenae Gardens! There are, though, lots of practical things that we could all do to make a difference. These include: building a local wildlife map based on our sightings; putting up nesting boxes, including swift boxes, on our houses and in our gardens where we have suitable locations; leaving areas of our gardens to remain “untidy”, so that key food plants for butterflies such as stinging nettles can thrive; creating garden ponds, so that more frogs, newts and dragonflies can find a home; growing herbs, vegetables and flowers in pots that can be placed on a balcony or front porch; and much more.

Best of all would be if we were to do this together, so we can build our community connections and help and learn from one another as we do it. We are lucky to have some very knowledgeable wildlife experts in our community and there are already many volunteers doing great work in Westcombe Woodlands, Vanbrugh Pits, the station garden and more. If you are interested in the idea, please drop me a line c/o info@westcombesociety.org and I’ll be in touch. Let’s make Wild Westcombe happen!

Andy Chapman

Are you working remotely?
Is your IT secure and functional?

headstart
IT Solutions

Is it time to upgrade?
Fast response from local experts in:

- Remote working
- Office 365 & other Cloud services
- Teams, SharePoint & email
- Managed security
- Networking
- Hardware & Software
- Desktops, laptops & servers
- Discounted rates for home users & charities

"Headstart provide us with exceptional service"
"Peace of mind and technical reassurance"
"Excellent service, friendly people"

Check out more of our testimonials at www.headstart.it

Call us for a free consultation

0208 858 2002
enquiries@headstart.it

WHAT'S ON

BLACKHEATH HALLS

July/August events at Blackheath Halls as follows:
3rd July - Damien O’Kane and Ron Block
4th July – Lunchtime Recital Riccardo Pes & Andrea Boscutti
7th-9th July – Strozzi



Greenwich Park Events

Music and Dance Events Saturdays from 25 June to 6 August
Some free.
Book at <https://greenwichdance.org.uk/whats-on>

Saturday 27 and 28 August – 8pm
Family Film Singalong
Bring a picnic or enjoy themed food and cocktails at these free events.

27th Mamma Mia!
– a romantic comedy featuring songs by ABBA.

28th Jhoom Baraba Jhoom
– a Bollywood romantic comedy musical

Concerts in Greenwich Park

- Sunday 3rd July KiX Jazz Orchestra
- Sunday 10th July Great Cross Country Band
- Sunday 17th July Belvedere Concert Band
- Sunday 24th July Old Jelly Rollers
- Sunday 31st July Graham Pike Big Band
- Sunday 7th August Shadey Scandals
- Sunday 14th August Phoenix Swing Quartet
- Sunday 21st August Sessions Soul Band
- Sunday 28th August Greenwich Concert Band
- Monday 29th August Midnight Bluez Band
Courtesy of Friends of Greenwich Park

Diary Dates Westcombe Society Events

24th September:
Annual Walk for Macmillan starting from Greenwich
30th September:
Macmillan Coffee Morning
Anyone who wishes to join in and support these two events please contact: info@westcombesociety.org

See page 2 for more information

Arts Society Greenwich

www.theartsocietygreenwich.org.uk



A Symphony in Blue, The Artist, The Couturier and Atlas Mountain
Lecturer: Caroline Holmes
7.30pm Monday 11 July 2022
Painter Jacques Majorelle, the son of the celebrated Art Nouveau furniture designer Louis Majorelle, arrived in Morocco in the year 1917 or thereabouts. His artistic output started with posters to entice French tourists. Extensive travel in the Atlas Mountains inspired glorious

Mycenae House

Mycenae House & Gardens present a free FAMILY ARTS FESTIVAL
Sunday 24th July 2022 – 11am until 4.30pm

Mycenae House is once again working with the TRAMSHED to present a one-day free festival of family arts for all ages, on what will hopefully be a bright sunny Sunday. Live theatre, craft fair, arts and children’s activities, live music, stalls and bar, café and ice cream.
Outdoor family theatre shows by Geese Theatre and Jelly Fish Theatre will bring alive the gardens with stunning performances for all ages – BOUDICA is a fast-paced, action-packed show steered by charming characters. Experienced performers bring the children into the world of the play through rhythmic participation, atmospheric activities and playing key characters. WAGON OF DREAMS is a story of three best friends on an exciting ocean adventure. Meet the outrageous mermaids and fantastical sea creatures. A hilariously interactive adventure packed full of puppetry, fun and original music. THE GREEN KNIGHT is a raucous tale based on the Arthurian legend as he journeys across ancient Britain in search of the greatest sword master of all time. This story is about how we learn from one another and the bonds we forge when we work together and never give up.

The festival includes a Mini-Craft fayre featuring ten stalls from The Corner at 96 stable of makers, children’s creative activities will be provided by Bo Peeps Pre School, further children’s activities from the Westcombe Society. Live music from Boppin’ Bunnies.

The theatre shows are free but we recommend you book in advance at: tramshed.org/whats-on/family
mycenaehouse.co.uk/event/events-shows/

REACH OUT Walk and Talk Group
Mondays 12-2pm.
Meet outside main entrance at Mycenae House, SE3.

email: befriending@volunteersgreenwich.co.uk
Tel: Abdi 07444 182 741

blue dominated canvases and a garden in Marrakech. His blue horticultural testament was saved by Yves St Laurent who tailored the garden with pattern and panache. A foundation for its survival and public entry was created by Yves St Laurent.
This lecture will be presented at The Bakehouse, Blackheath SE3 9LA (entry via Bennett Park) or on Zoom
Members will receive email joining instructions. Guests are welcome for a payment of £10 (in person, subject to space) or £8 via Zoom, and should contact ticaclark@hotmail.com to make a booking. Due to limited space, members will be given priority to attend in person at The Bakehouse. For those joining on Zoom, an email with the link to the lecture will be sent a couple of days before.

Greenwich Industrial History Society

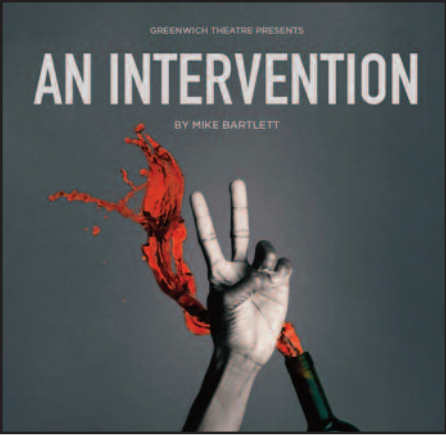
Tuesday 16th July Elizabeth Wiggins will speak on "Morden College and its archives". This will be our opportunity to thank Elizabeth as she retires from Morden College, after exceptional service on the archives from which so many of us have benefitted. This will be advertised on our Facebook page a week beforehand with a means of booking a place.

Saturday 3rd September Our Hon Secretary Alan Burkitt-Gray will be conducting a walk "Greenwich, the Home of International Telecoms" (organised jointly with the Greater London Industrial Archaeology Society). Bookings at walks@glias.org.uk.

Greenwich Theatre

An Intervention by Mike Bartlett
Dates 22nd July - 13th August
and
Treasure Island
Dates 19th August - 4th September

See article on Page 7 for further details.



A & A LANDSCAPES
Landscape Specialists
 
Free advice & estimates Qualified horticulturalist
All aspects of soft & hard landscaping work carried out including
* Maintenance * Site clearance
* Turfing * Tree surgery
* Fencing * Patios
* Brickwork
Tel. 020 8318 2530

Royal Museums Greenwich

July/August 2022
The following exhibition are open from 10.00 – 17.00 and are suitable for all ages.

EXHIBITIONS
Canaletto’s Venice Revisited
This major exhibition will display the complete set of 24 Venetian views painted by Canaletto in the 1730s.
Dates: 1 April – 25 September 2022
Location: National Maritime Museum, Special Exhibitions Gallery
Admission: Adult £10 | Student £6.50 | Child £5

Astronomy Photographer of the Year 13
Now in its thirteenth year, the spellbinding winning and shortlisted images from this year’s Astronomy Photographer of the Year competition are on display at the National Maritime Museum.
Dates: 18 September 2021 – 7 August 2022 – LAST CHANCE TO SEE
Location: National Maritime Museum, Photography Gallery
Admission: Adult £10 | Student £6.50 | Child £5

All the Queen’s Men
Uncover the lives of Elizabeth I’s male courtiers and their personal and political relationships with the monarch in this new display at the Queen’s House.
Dates: Daily
Location: Queen’s House, Greenwich
Admission: Free

Woburn Treasures
Explore some of the treasured works from the private art collection of The Duke and Duchess of Bedford as they go on show in the Queen’s House in Greenwich.
Dates: Daily until 29 August – LAST CHANCE TO SEE
Location: Queen’s House, Greenwich
Admission: Free

For further information on the above exhibitions as well as the many activities including Family Events being held at the various sites of Royal Museums Greenwich over the summer go to www.rmg.co.uk/whats-on.



MEfA Montessori School
Montessori House, 135 Westcombe Hill, Blackheath
SE3 7DP
Tel: 0208 305 2203

Now enrolling in all classes:

- Montessori School (2-9 years)
- Montessori After-school (4-11 years)
- Montessori Forest School (all age)
- Montessori French (all age)
- Baby Montessori (0-15 months)
- Toddler Montessori (15-24 months)

Enquiries: Call Wendy on 07710 433 994
Charity Registration No: 1136552

ENVIRONMENT

Gardener’s Delight

Anne Robbins

The Charlton and Blackheath Amateur Horticultural Society [CABAHS] held a plant sale on the 22nd of May. The event was part of Charlton House’s Sustainability Sunday, and it brought several groups



together, featuring Friends of Greenwich Park and Charlton Community Gardens, among others. Crucially, there was also a cake sale by the Blackheath and Greenwich Women’s Institute In beautiful weather, the day raised funds for the Greenwich and Bexley Community Hospice as well as continued development of the CABAHS volunteer work at the Old Pond Garden. An astonishing number of plants were raised by CABAHS members: hundreds were



donated for the sale, ranging from agapanthus to tomatoes. Almost everything sold within three hours; the site was very busy indeed. CABAHS is considering holding another sale in October for Horn Fair, so you’ll have another opportunity to stock up for your own garden. Did you miss the annual Open Gardens events raising funds for the Community Hospice in June, when over 40 gardens were open for visits? It’s not too late to get ideas for your own growing efforts by seeing how other people garden. The National Garden Scheme has a multitude of volunteers showing their spaces off. It’s easy to search the website at <https://ngs.org.uk>. While there aren’t any more gardens open locally, some aren’t too far away: for instance, Tudeley House in Chislehurst, open on the 4th of September. Other possibilities include Herne Hill, Forest Hill or East Dulwich in July. The Scheme runs nationally and raises over £3m each year for charities, while also raising the profile of this beloved hobby. Plus, some open gardens have tea and cakes, and even plants for sale. Note: Volunteer sessions are held every Tuesday 2-4pm and Thursday 10-12 and operate as a drop-in, so no long term commitment is necessary, just come along. We average 14 volunteers at each session and are a friendly bunch with all levels of gardening skills from brand new to professional. Bring your own gloves and a mug, refreshments provided. The walled gardens are open every day from 10-4 and are well worth a visit. Also look out for the selection of vases on display in Frilly’s café to show visitors “What’s in Flower” in the gardens that week.

WRISTWORTH HEATING & PLUMBING

Installation - Servicing - Repair

Tel: 07725 008280
Email: wristworth@hotmail.co.uk

GAS safe
REGISTER

Check Out Our **NEW** Website: wristworthheating.weebly.com

ROYAL GREENWICH HERITAGE TRUST

Royal Greenwich Heritage Trust is a registered charity, formed in 2014 to look after key structures, objects, and historic records within the Royal Borough of Greenwich. The next annual tree survey will take place later this summer, with tree surgeon works likely to be scheduled in winter 2022-23. Greenwich Heritage has committed to planting at least one new tree for every tree lost in these works. Assets in the Trust’s care include Charlton House & Gardens, Charlton Assembly Rooms, Tudor Barn, and the Museum Collections & Archive of the Royal Greenwich, as well as memorials across the Borough.

18 metre telecom pole - permission refused

Ann Hill

Residents of the Vanbrugh estate, and others in the area, were alarmed to find out that an international telecommunications operator had recently applied to RBG to erect an 18 metre monopole on the footpath through the estate and close to the children's play area. 73 objections, including one from the Westcombe Society, were submitted. The Vanbrugh Estate was designed by renowned architects Chamberlin, Powell & Bon, shares many stylistic similarities to the Barbican and is of architectural interest. Objectors argued that such a pole in that location would damage the Conservation Area and the World Heritage Site buffer zone and have an adverse visual impact. The applicant argued that the mast and cabinets would ‘assimilate well into the immediate street scene and not be detrimental’ and that the visual impact would be minimised ‘by integrating with existing street furniture’. The Westcombe Society pointed out that although the pole may appear slender on the applicant’s drawings it is approximately the diameter of a pillar box which would substantially affect the character and appearance of the Conservation Area. This harm would be even more noticeable when the trees were no longer in leaf. We were also critical of the quality of the application which contains several errors and omissions. The RBG has a policy for communications development which is contravened in several respects by this proposal. Fortunately, the Directorate of Regeneration, Enterprise & Skills, rejected the proposal on a number of grounds including that ‘the proposed telecommunications mast and associated equipment cabinets, by reason of its siting, excessive height, scale and bulk, and poor design would appear as a highly visible and incongruous addition within the immediate street scene as well as the wider area to the detriment of the character and appearance of the immediate public realm and street scene.’

PLANNING APPLICATIONS

(See also <http://www.westcombesociety.org>)

61 FOYLE ROAD ref 22/1967/HD
To demolish shed and construct single storey outbuilding
167 HUMBER ROAD ref 22/1871/CP
To erect shed in rear garden.
148 HUMBER ROAD ref 22/1835/HD
To construct rear side infill extension with pitched roof, skylights and new fenestration to rear.
12 STRATHEDEN ROAD ref 22/1404/F and 22/1159/F
To retain single storey rear extension.
25A MYCENAE ROAD ref 22/1166/F
To replace side window and roof hatch with a roof light and install boiler flue to side elevation at second floor level.

1-72 TOM SMITH CLOSE ref 22/1099/F
To replace white cladding panels and replace anodised aluminium windows and patio doors with white powder coated aluminium ones.

TREE WORKS

42 FOYLE ROAD ref 22/2058/TC
To fell fir tree.
9-20 WYCHERLEY CLOSE 22/2051/TP
To fell sycamore in front garden and raise crown to 5m of adjacent sycamore.

Loving Slugs & Snails?

Ann Hill

I detest these creatures whenever I find my carefully nurtured seedlings munched to pieces overnight, or young shoots stripped away... and I am not alone! How to deter them is one of the commonest questions posed by gardeners in the UK. The Royal Horticultural Society, however, is encouraging us to rethink our view of them as pests and instead regard slugs and snails as beneficial to creating a healthy ecosystem, by providing food for birds and frogs for example. Apparently only nine of 44 species of slugs in the UK actually damage our garden plants. So can we learn to live with slugs and snails? The RHS principal entomologist recently said, “Amid the climate and biodiversity emergencies, now is the time to gracefully accept, even actively encourage, more of this life into our gardens.” Here are some suggestions:

- create a pond to encourage frogs,
- encourage birds with a bird feeder or by reducing cat predation (by fitting a collar with bell),
- wait until seedlings are sturdy before planting them in open ground or cover tender seedlings with a cloche (or inverted plastic bottle, cut in half),
- surround your favourite plants with ones that slugs and snails find delicious (like lettuce or marigolds) so these are eaten

instead, or tempt away with pieces of cucumber,

- in winter, expose slug eggs for birds to eat by raking over the soil and removing fallen leaves.

There are also some lovely plants that slugs and snails dislike and I shall think about growing more of these in future. Here are some, and almost all are good pollinators too:-

- Aromatic herbs, including rosemary, thyme, sage, lavender
- Hairy-leaved plants, including lambs’ ears and pulmonarias
- Foxgloves and euphorbias
- Succulents, such as sempervivums and sedums
- Ferns, hydrangeas, geraniums
- Japanese anemones, cyclamen, aquilegia
- Penstemons, astrantia, fuschia
- Crocosmia, hellebores, campanula
- Heuchera, ajuga, astilbe, alchemilla
- Dianthus, alliums, aubretia
- Snapdragons, begonias, busy lizzies
- Potentilla, California poppies, bidens.

Some of my favourite plants are ones slugs and snails really like, including hostas, dahlias, petunias, marigolds, sunflowers, and cosmos. Maybe I can fool the slugs by popping my favourites among distasteful ones....or is this a vain hope?

St
St Olave's Prep School

Contact us for further information or to arrange a tour

“ The quality of the pupils’ academic and other achievements is excellent ”
ISI Inspection Report

www.stolaves.org.uk. Call 020 8294 8930

FEATURES

GREENWICH POWERCHAIR FOOTBALL CLUB

Every Thursday between 4pm to 6.30pm, it's match time at the Waterfront Leisure Centre for Greenwich Powerchair Football Club.

The football players arrive, fully focused and ready for action. The whistle blows and the game begins.

The players move quickly around the hall, spinning their chairs to hit the ball. The



game is fast and competitive. The players shout words of encouragement to their teammates, cheering loudly when a goal is scored.

Head Coach Rhea Daly keeps a close eye on the game, ensuring each player is performing to the best of their ability.

Assistant coaches from Charlton Athletic Community Trust help referee the game.

These are valuable moments of freedom in restricted lives, where for a couple of magical hours, life is defined by what is possible; it is a game of football with friends.

Funding for Greenwich Powerchair Football Club comes from local charity, South London Special League.

However, powerchairs aren't cheap, a new one can cost upwards of £6,500.

Last year, we ran the Big Half and London Marathon for South London Special League. Thanks to the generosity of Westcombe News readers, we raised enough money to buy a new powerchair, as well as keeping Friday tennis sessions in Greenwich Park going for another year.

We will be running the Big Half in September, raising money for South London Special League once more. With your support, we can ensure our fabulous diverse, disabled community of all ages can continue to play sport, make friends and have fun.

Thank you for your support, Westcombe News!

Helen Marley-Hutchinson
Olwen Davies
Olga Bonde
Mirren Davies
Rebecca Morgen
Rachel Mai-Jones
Alyson Longley



Students take to the runway in Blackheath High School fashion show

Blackheath High School has just hosted its first live fashion show in over two years to showcase students' incredible design talent.

Entitled 'Disrupt', the show referenced the disruption faced by students throughout the pandemic. Students were given the opportunity to experience the roles of fashion designers, makeup artists, models and technical support, to put on a professional show.

Year 9 students designed garments inspired by 'Fears and Phobias', Year 11 GCSE students explored the theme of 'Beautiful Decay' and students in Year 12 worked with the theme 'Fragments'.

The show closed with catwalks by Year 13 students showcasing their final collections.

Ms Carol Chandler-Thompson, Head of Blackheath High School, said: "Our fashion show is a staple event in the school's calendar every year and it was fantastic to come together to celebrate the extraordinary talent of our girls."

www.blackheathhighschool.gdst.net



In-house Productions return to Greenwich

Greenwich Theatre presents
An Intervention by Mike Bartlett, Directed by James Haddrell
Dates 22nd July - 13th August

They've always been best friends. Well, friends anyway. Do grown-ups really have best friends? Then one goes on the anti-war protest, and one doesn't. One feels let down, one feels justified. One feels abandoned, one feels attacked. One gets spectacularly drunk, one tries to change their life.

From Mike Bartlett, the writer of King Charles III, Scandaltown, The 47th, and the smash-hit TV drama Doctor Foster, An Intervention is about what happens when you don't see eye to eye with the people you love the most. It's about needing one another, and failing one another. It's about being honest and being outrageous. It might just be what we all need right now.

"The in-demand Mike Bartlett provocatively questions our responsibilities as friends and citizens... a funny, sad play about the need to look after each other... a work that reminds you to call that neglected friend." – The Guardian

An Intervention continues Greenwich Theatre's return to high-profile in-house production, following acclaimed productions of Steven Berkoff's The Secret Love Life Of Ophelia featuring Helen Mirren, Caryl Churchill's Bad Nights and Odd Days starring Paul McGann, and most recently the rare revival of Michael Frayn's Alarms and Excursions. Age suitability: 15+

Greenwich Theatre presents Treasure Island By Le Navet Bete and John Nicholson, Directed by James Haddrell.

Dates 19th August- 14th September
Orphaned teenager Jim Hawkins, left in the careless care of Aunt Agnes, is serving ale in the Admiral Benbow when the infamous pirate Billy Bones crashes into the bar and changes his life forever. Perfect for fans of the Greenwich Theatre pantomime, this riotously chaotic adaptation of Robert Louis Stevenson's beloved tale of pirates and buried treasure is full of physical comedy, daft jokes and thrilling adventure, with Jim setting sail on the high seas with Captain Birdseye, Blue Peter, Long-John Silver and the parrot Alexa...

INVESTMENTS

PENSIONS

ESTATE PLANNING

STARKEY FINANCIAL PLANNING

Contact us: 020 8853 7160
admin@starkeyfp.co.uk

2 Charlton Road, Blackheath Standard, London SE3 7EX

Independent and friendly advice from south east
London's top team of Chartered Financial Planners

Starkey Financial Planning Ltd is authorised and regulated by the Financial Conduct Authority



FROM JUST £999* A MONTH

- ✓ Expert childcare from 7:45 to 18:30 everyday
- ✓ Small classes taught by qualified teachers (during term time)
- ✓ Step up from day nursery and prepare your child to start school

A NURSERY PREP SCHOOL EDUCATION IS MORE AFFORDABLE THAN YOU THINK

*lunches and incidental costs extra, includes government early years funding

THE POINTER SCHOOL

<http://pointers.school>

R.G. Austin

(Established 1963)



Heating Engineers,
Property Maintenance,
Electrics, Painting,
Decorating, Plumbing,
Central Heating,



Shower and Bathroom Specialists

2A Hassendean Rd, Blackheath SE3 8TS
Telephone: 0208 858 7359
rgaustintld@gmail.com

Emergencies: 07738124344
email: rgaustintld@gmail.com

PAINTING & DECORATING

Interior/Exterior/
Experienced Reliable Clean
Fully Guaranteed/Insured.
References available.
Free no obligation quote
and advice given

JOHN at JAMES & LAMONT
Office 020 8462 4646
Mobile 07802 535695
jamlam.john@btinternet.com

MARKET PLACE

COUNSELLING

HOLISTIC COUNSELLING
(over 20 years experience)
For Anxiety – Depression - Relationship problems & Other Issues
1 full hour session £50 –
Concessions available
Please contact Brenda T: 020 8858 5969 E: bmbt@btinternet.com Or Linda T: 020 8858 1991 E: lindachenderson45@gmail.com
W: holisticcounsellingandyoga.com.

THERAPIST

No problem is too big or too small!
I'm a locally based BABCP registered CBT therapist and couples therapist offering sessions online and in person.
For a 15 minute phone consultation contact me via hello@Sasha-Louise.com or 07889755299.
Website - www.Sasha-Louise.com

GARDENING

DANIIL'S GARDENING SERVICES
Garden Design & Maintenance. Experienced gardener and qualified garden designer. Planting designs available. All aspects of maintenance undertaken except tree surgery. All waste can be removed. Contact Daniil on 07419338261 or 02088531397. Email daniil96@yahoo.co.uk.

HOLIDAYS

WHITSTABLE WEEKENDS/WEEKS
Sea wall house between Oyster Warehouse and harbour. Sleeps 5. Fantastic views. Tel: 8858 6578 or 01304 367443

TUITION

SCIENCE TUITION: GCSE BIOLOGY, CHEMISTRY & PHYSICS
by a qualified and experienced teacher. Private 1 to 1 and small groups.
@chenique_sciencetutor
Chenique Ventura 07365 992 717
cheniqueventura@gmail.com
LOCAL PRIVATE TUITION
English & Math's Key stage 1 - GCSE'S
PGCE Qualified & Experienced Tutor.
1-1 & Small groups Call: 07904 880 448
MATHS & ENGLISH TUITION TO GCSE AND PREPARATION FOR 11+ AND INDEPENDENT SCHOOL SELECTION TESTS by qualified and experienced teacher.marystuition.com
Mary Bauckham 07709 089 838
marybauckham@gmail.co

Wanted

Advertising Manager needed for popular local paper.

Many regular advertisers, together with one-offs.

Would suit a Volunteer with a few hours a week to spare.

Knowledge of simple spreadsheets would be useful but training could be given.

Please contact:
info@westcombesociety.org

HOME SUPPORT AND TRAINING FOR YOUR DIGITAL DEVICES

Need some help with computers, phones and tablets? I'm a DBS checked IT trainer with 21 years experience, friendly and patient.
£45/hour (£20 call out), discounted for block bookings. To discuss options, call Paul on 07958 251 448 or email paul.clayton@soulchip.co.uk
GOLDSTAR LEARNING ACADEMY UK
Specialist in STEM Maths, 1 to 1 and Group Tuition. Experienced PGCE Qualified Tutors 07495 434 234
@goldstarlearningacademy_uk
MATHS TUITION
Qualified and experienced secondary teacher offers tuition to GCSE level.
Call Miv Whitaker: 07745 816338; or email miv.whitaker@gmail.com
SPANISH TUITION
GCSE, A Levels, Conversation. Latin-American native speaker. On line. Please contact Miguel: migansiergut52@gmail.com

SERVICES & TRADE

INTERIOR DECORATOR & CARPENTER with over 20 years experience. A member of the guild of mastercraftsman. Free quotes & friendly advice on all your decorating requirements. Local references available.
Tel: Ashley Greaves 8858 2981
PAINTING PLACE DECORATORS
Interior & Exterior
Female Painting Team
We cover South London
Call +44795 808 4728
email:Paintingcolour15@gmail.com
www.paintingplacedecorators.co.uk
A MAN AND A VAN
Tel: 020 8858 3889 Mobile: 07885 917842
LOCAL LADDERLESS WINDOW & GUTTER CLEANING SERVICE
Call/Text Mike 07791 465052
PARADISE TREE SURGEONS AND LANDSCAPING
www.treesurgeonsblackheath.co.uk
admin@reesurgeonsblackheath.co.uk
Text 07791 465052



TROJAN PRESS

PRINTING IN BLACKHEATH SINCE 1978

• **BUSINESS CARDS** • **FLYERS**
• **INVOICES** • **LETTERHEADS**
• **BOOKS** • **BROCHURES**
• **CALENDARS** • **FORMS** •
INVITES • **ORDER OF SERVICES**
• **PROGRAMMES**

1a Lizban St
Blackheath, London SE3 8SS

Tel: 020 8853 2268

Email: info@trojanpress.co.uk
www.trojanpress.com

CARPENTER

Specialist in
refurbishment, repair
and replacement of
sash windows. Call
MALCOLM TIERNEY
07775 657371

DV SERVICES PLUMBING & HANDYMAN

Blockages & Drains,
Radiator valves and radiators not working,
Change and fix toilets, sinks,
showers & taps In bathrooms,
toilets and kitchens. We can fix it!
Call Daniel on: 07904 880 448
T.TA ELECTRICS. NICEIC Approved Contractor, Quality Tradesman. All electrical work undertaken, Fully Insured & Guaranteed. 24HR EMERGENCY ELEC-TRICAL. Please call Tony on 07961 509 403 OR 020 8488 7425
OR info@ttaelectrics.co.uk
HOMEWORKS All-round handyman for those DIY's you have no time for! General repairs. Painting & Decorating. General Carpentry and flooring. Flat-pack assembly. Patio and deck cleaning. No job too small.
Contact Matthew Barron 07903 388658
ELECTRICIAN / ALARM ENGINEER
No job too small TMIET registered.
Call 07879 011792
MARK CHEESEMAM, LOCAL CARPENTER AND JOINER WITH OVER 30 YEARS EXPERIENCE.
All Aspects Of Carpentry and Construction Executed Considerately and to a High Standard. Both Traditional and Contemporary Design Joinery - Cupboards, Wardrobes, Floating Shelves Etc. Sash Window Overhaul. If you have Rotten Window Sills, Door Frames Etc. rather than replace them with the associated upheaval and expense, why not have a Timber/Resin Repair? Please Call Mark on 07767 456131 or H: 020 8854 4028.

MARK CHEESEMAM, LOCAL CARPENTER AND JOINER WITH OVER 30 YEARS EXPERIENCE.

All Aspects Of Carpentry and Construction Executed Considerately and to a High Standard. Both Traditional and Contemporary Design Joinery - Cupboards, Wardrobes, Floating Shelves Etc. Sash Window Overhaul. If you have Rotten Window Sills, Door Frames Etc. rather than replace them with the associated upheaval and expense, why not have a Timber/Resin Repair? Please Call Mark on 07767 456131 or H: 020 8854 4028.

PEST CONTROL SERVICES

Mice, Rats, Squirrels, Wasps, Foxes etc.
Local Service 07850 839 655

ANGELO, ELECTRICIAN

No Job Too Small
T - 020 87616012/ M - 07850 767 283
Email - angelo@glennies.net
Part P Certificated

18th Edition & JIB Registered

WESTCOMBE CLEANERS

I'm a friendly, hard-working & organised domestic cleaner. Regular or single services. Competitive rates. Additional tasks. I love my clients to be happy.
Phone 07746 291617

LOCAL REPAIR & ALTERATIONS

Tailored Bespoke Jacket repaired,
Trousers repaired/shortened,
Skirts and dresses reshaped/shortened etc.
Over 25yrs Experience Call 07904 880 448
TOM ELLIS BESPOKE CARPENTRY
Alcove bookcases, cabinets, wardrobes and window seats. M. 07510 869 947
TRAINED CHIMNEY SWEEP & STOVE INSTALLER Fast, friendly Happy to work!
Call Anthony on 07772 649577 or email: chimneymaintenance@gmail.com

LOCAL CARPET CLEANER

Specialist in cleaning Carpets, Upholstery & Rugs. www.carpetcrew.co.uk
Phone 07828503132

WANTED

LOCAL, TRUSTWORTHY AND HONEST ANTIQUE DEALER, will buy antique solid gold jewellery at fair prices (exceeding scrap value). Please text Sarah 07743514364 to arrange a call.
ROYAL AIR FORCE WW2 ITEMS
Uniforms, Wings, badges, photos and documents. Good prices paid.
Tel: Mark on 07727 532503

WORK FROM HOME

EARN AN EXTRA INCOME
EARN EXTRA CASH P/T OR F/T
- Work from home
- Hours to suit you
- Full training & support given
If you're honest, hardworking & positive, message me: Sona - 07866152820

DISCOUNT!
(When you show your Westcombe Society membership card)

PARES FOOTWEAR - Blackheath
10% OFF shoes over £20 excl sale stock.
BODYWORKZ - THE FITNESS CLINIC
109 Humber Road. 10% OFF all treatments £30+ except Chiropractic; exc. Saturdays.
ROYAL NEPALESE RESTAURANT
(Station Crescent) 20% OFF meals for two or more Sunday - Thursday.
CORIANDER RESTAURANT (Station Crescent) 25% off bookings Sun/Thurs.
COTON & HAMBLIN LENS CLUB-
Complimentary standard coated single vision lenses worth £50 when purchasing complete spectacles. T's & C's apply. **BLACKHEATH EYECARE OPTICIANS**
Advanced Eye Examinations £95 or £45 with NHS concession. 25% off 2nd pair of spectacles with the same prescription.
TROJAN PRESS 10% OFF all quotations
WESTCOMBE DRY CLEANERS
10% discount on Dry Cleaning. Cannot be used in conjunction with any other offers.
A * DRIVING SCHOOL £5 discount on the price of one x 2 hour lesson
KAREN STOREY OF HOMESPACE
offers members 10% discount on decluttering & homestaging : 07951 191086
SHENDA FALVEY PERSONAL TRAINING, STOTT PILATES & BOOTCAMPS
M: 07887727335

BLACKHEATH HIGH
SIXTH FORM
GDST

I will develop the next vaccine

Where girls boldly go
blackheathhighschool.gdst.net

Book a Sixth Form Tour

Fully funded Sixth Form bursary places available for exceptional applicants - apply now for September 2022