



“Fortune and love favor the brave” Ovid



Photo: Jacob King/PA Wire/PA Images

Congratulations to Her Majesty the Queen on her Platinum Jubilee!

The only British Monarch ever to celebrate such an achievement.



Sunday 5th June is Street Party Day!

Over 60k people have registered to host Big Jubilee Lunches on the Platinum celebration weekend, with events ranging from world record attempts for the longest street party to

back garden BBQ's and everything in between.

Above is a vintage photo of the Silver Jubilee held in 1977. Over the Jubilee years, hairstyles, clothes and the menu might have changed but the essence remains steadfast in honouring the Queen's amazing service to her country. (picture taken from a social media site)

Local events planned to mark the Platinum Jubilee

Royal Greenwich will be celebrating the Queen's Platinum Jubilee in style along with the rest of the nation.

Beginning with Royal Greenwich Together 2022 on Thursday 2nd June - a free, family festival at Charlton Park from 12 noon to 6pm. This event promises a jam-packed day of dazzling performances and live music along with workshops, funfair rides, food stalls and so much more!

The Platinum Picnic in the Park will follow on Friday 3rd June, from 12 noon to 4pm. Already rich in royal heritage, the Borough is sure to pull out all the stops hosting a summers day of picnicking.

https://www.royalgreenwich.gov.uk/news/article/2017/a_royal_summer_for_a_royal_borough_for_all_the_details

Royal Museums Greenwich are celebrating at the National Maritime Museum with a series of community activities. Explore the Queen's long-standing relationship with the museum by following a trail of photographs documenting her visits over the years. Join in playful

activities and bring your picnic to enjoy the grounds of the historic site dressed in bunting by local residents.

<https://www.rmg.co.uk>

The Blackheath Society will be celebrating on the evening of Thursday 2nd June, starting 8.30pm with a concert by local choirs followed by the lighting of the beacon at 9.30pm (near the Hub in the centre of Blackheath).

Royal tours and exhibition
2nd-5th June

The Old Royal Naval College have created a royal-themed tour including a special exhibition telling the story of the Queen and her family's links to the Old Royal Naval College.



NEIGHBOURHOOD

WESTCOMBE NEWS

PUBLISHER

The Westcombe Society
c/o 163 Westcombe Hill, SE3 7DP or
info@westcombesociety.org
Chair: Marilyn Little
Tel: 0208 853 1312

EDITOR:

Anne Williams

EDITORIAL TEAM

Polly Morgan, Elizabeth Mercer

ALL EDITORIAL CORRESPONDENCE/PRESS MATERIAL TO BE SENT TO:

wnews@westcombesociety.org
Deadline for July/August copy
18th June 2022

SUB EDITOR

Annie Grey

ENVIRONMENT

Editor: Maggie Gravelle

All comments and queries to
Emily Norton: 0208 853 2756

ADVERTISING

Jenny Senerat

advertising@westcombesociety.org
Deadline for Advertising:
16th June 2022

DISTRIBUTION

Emily Norton and volunteers
Tel: 0208 853 2756

PRINTING

Trojan Press.

Email: dave@trojanpress.co.uk
www.trojanpress.com

The views expressed in the Westcombe News are not necessarily those of the Westcombe Society or of the Editor.

We take all reasonable precautions to protect the interests of our readers by ensuring as far as possible the bona fides of our advertisers but cannot accept any responsibility for them. Any complaints should be addressed to the advertiser.

To access back numbers (in colour) go to:
<http://www.westcombesociety.org/westcombenews>

WESTCOMBE SOCIETY MEMBERSHIP

We would be delighted to receive your support and annual membership subscription.

**Family membership £12.
Individual membership £8. Senior Citizens and Unwaged £4.**

Please send payment to:
Christine Legg, 69 Mycenae Road, London, SE3 7SE or email: membership@westcombesociety.org

Westcombe Society AGM Report

On Friday 13th May the Westcombe Society AGM was held in the Centenary Room at Blackheath High School. Thirty two members attended the meeting. The usual reports of the Society's business were presented and our new Treasurer, Miles Storey, was welcomed before giving his report. He has assured us that although the finances were down they were nevertheless in good shape despite the effects of Covid and the increased costs of publishing the Westcombe News. This increase was due primarily to the rise in the cost of paper.

Vacancies for the roles of Chair, Vice Chair and Editor of the Westcombe News and Advertising Manager for the *WN* remain unfilled.

Following the official business a talk was given by Helen Willis on 'Greenwich Park Revealed'. It was a very interesting and knowledgeable presentation with slides which was followed by interesting questions and answers.

Jean-Jacques Aune closed the meeting by thanking Marilyn Little as Chair, and the officers for all their hard work. Those present were then invited to adjourn for wine and nibbles. **- Caroline Owens**

NHS Staff Thank You Party

On Saturday 11th & Sunday 12th June the 'NHS Staff Thankyou' event is to take place on Circus Fields/Blackheath, this event is being held by the Lewisham and Greenwich NHS Trust. This is a free ticketed event for NHS staff and their families. There will be activities for the enjoyment of families which include funfair attractions, a virtual arcade, a craft tent and games. This event is being managed by an external event company, Continental Drifts (who'll be familiar to you as they've managed Blackheath fireworks).

Advertising Rates for Display Adverts in the WN

Size	Per Issue	Five Issue Discount
Standard 6cm x 6cm (one column wide)	£40	£185
12cm x 6cm (horizontal or vertical)	£63	£290
18cm x 6cm (horizontal or vertical)	£89	£405
12cm x 12cm	£115	£515

For further details please contact:
Advertisingmanager@westcombesociety.org

Councillors' Changes

The Westcombe Society would like to thank Geoff Brighty for 40 years of service as a local Councillor to the Royal Borough of Greenwich and in particular to Westcombe Park.

We are very grateful for the attention he has given to issues within Westcombe Park and their resolution. He has consistently assisted the Westcombe Society in so many ways over the years. His help and support have been greatly appreciated and we wish him well for the future.

We also congratulate our Councillors, Leo Fletcher and Mariam Lolavar, on their re-election and welcome and congratulate newly-elected Councillor Christine St Matthew-Daniel. We look forward to working with them in the future.

-The Westcombe Society

Looking for Information

Does anyone with a long memory recall the Little Sisters of the Assumption, the nuns based in Woodlands and Mycenae House up until the mid 1960s? We are looking for information and especially photographs of the nuns for a new story-board about the history of the site. If you can help please email info@westcombesociety.org or call Marilyn Little on 0208 853 1312.

Who Would Like to See our Pavements Bin Free?

OK, well not completely bin free as in some cases there is no room for the seemingly ever-growing bin population on a property. However, it would be so much more respectful, thoughtful and considerate to pavement users of all abilities if the bins that could be wheeled back onto properties, were done so as soon possible after collection.

I feel particularly sad for people with sight problems or those who use a mobility scooter as I do. Some pavements are becoming impassable!

-WN Reporter

The Mycenae Arboretum



Fiona Machen (FoMG) with an RBG Tree Officer labelling one of the famous London Planes

Mycenae Gardens is a local treasure, but few realise how rich it is in the variety of trees. There are at least 36 different varieties in the main gardens alone. The Friends of Mycenae Gardens enlisted the expertise of Greenwich Tree Officers to identify the trees, and held a labelling day on Friday 6th May, with a 'tree party' afterwards to celebrate. Rich Sylvester (@richstories) was there to lead the festivities, and soon had a tribe of small children following him around some of the newly-labelled trees as he told his stories.

Why not join the Friends of Mycenae Gardens to help preserve and enhance this precious space? We need volunteers to help with the pruning and planting (gardening expertise is welcome but not essential) but we also need people with ideas and people with the ability to organise and implement such ideas for the future and not just leave it to others. You will find more at mycenaegardens.org.uk.

-Mark Barnes

Jubilee Tea at St George's Saturday 4th June at 3pm - invite your friends.



...that's the cost of providing a school-age girl in Africa with sanitary pads for a month. Without such protection, girls often miss lessons and can lose over two month's education every year.

A small group of individuals provides sanitary protection in Kenya for up to 600 girls every month. We are now seeking to create a regular donation base of £400 a month (to achieve a maximum of £5,000 a year) to continue this work into the future.

Do you have £3 a month to help?

Stamens is a 'small charity' [registered under HMRC for GiftAid] based in Greenwich - 100% of the donated money is spent on the mission, which has no administrative costs.

To find out more
or to set up a £3 monthly donation, please visit www.stamens.org.uk

Young Entrepreneur in the Making..

Niamh, 9, who is in year 4 at Halstow School has started her own business making vegetarian dog treats. Gary and Debra from the Pleasaunce cafe are happily encouraging this endeavour and Niamh is supplying the cafe with a weekly supply of homemade dog treats.

Niamh says she has grown up with dogs and loves them, she prefers them to people, and one day would like her own dog care company. She calls her company The Full Monty; named after her own dog and she has big plans to build her business and



provide doggy bags and birthday cakes for canine celebrations. She also donates 10% of profit to animal



charities each month. You can purchase these healthy treats at the Pleasaunce cafe and please let them know if you would like to order any for your furry friend.

Father's Day...Elementary, My Dear Watson!

Father's Day: 19th June.

Challenged by accusations that men are so difficult to buy presents for, publisher Mike Bryan decided to create the ultimate gift editions of Conan Doyle's Sherlock Holmes mysteries. "Sherlock Holmes features the most fascinating and enduring characters in the history of British crime stories. People of all ages adore them. We would all like to be smart, and there is no one smarter than Mr Holmes, whilst Dr John Watson completes the sleuthing double act allowing us to have all the cleverness explained to us mere mortals."

"Originally serialised in newspapers and magazines in the late nineteenth century, Conan Doyle's famous collection of detective stories transport the reader back to



Holmes's bustling Victorian London, the misty moors of Dartmoor, the dizzying heights of the Reichenbach Falls and the cosy living room of 221B Baker Street." Mike adds.

Using the artwork from the early twentieth century editions as inspiration, the Baker Street Press editions have gone back to the original publications to create the most authentic texts.

'Sherlock Holmes Classics' collection of nine books is available from Waterstones and all good bookshops, or buy direct for home delivery via this link: <https://ccs-books.co.uk/product-category/baker-street-classics-sherlock-holmes/>



Letters

Trevor Allman,
Coleraine Road

Dear Westcombe News,
Via your esteemed publication, I would like to sincerely thank the other 124 constituents who voted for me and the Official Monster Raving Loony Party in the recent local election charade.

Whilst I did not accrue enough votes to see me re-elected to Greenwich Council after a gap of 32 years, the Official Monster Raving Loony Party was the only political party in the Borough of

Greenwich that contested the 2018 local elections that saw an increase in their vote in 2022.

The Official Monster Raving Loony Party also beat the Communist Party of Britain, so didn't finish last, so all-in-all we are pleased on what we achieved on a £0 campaign budget.

Again, thank you to everyone for their support – I will wear it always !!

For the Manic - Not the Few,
Trevor Allman
(Official Monster Raving Loony Party – Greenwich Branch)

Welcome to the Healing Path

Blackheath Complementary Health Centre

Celebrating 22 years serving the community with alternative and complementary medicine

184-186 Westcombe Hill
London SE3 7DH
0208 293 5380 | info@healingpath.co.uk
www.healingpath.co.uk

A team of experienced & dedicated professional practitioners, therapists and teachers

Acupuncture	Massage
Aromatherapy	Nutritional Medicine
Chiropody	Osteopathy
Counselling	Psychotherapy
Gong & Sound Baths	Reflexology
Herbal Medicine	Reiki
Homeopathy	Sound Healing
Hypnotherapy	Tui na
Iridology	Yoga

Open Gardens Festival 2022

11th-12th & 25th-26th June
2pm-6pm

Explore and discover beautiful and inspiring private gardens in our patch of South East London. Meet the gardeners and find out which plants work best for them and how they made their gardens. Enjoy the summer garden atmosphere, buy plants and refreshments – from Pimms to cream teas. Examples of gardens taken from the brochure:

12th June
9 St Johns Park, SE3 7TD
Jon & Stewart Weaver-Snellgrove
A deep-set front garden with gravel pathways has buxus-edged mixed borders. A yew arch and narrow entrance leads to an extensive rear garden with vegetable and soft fruit raised beds, mature trees, shrubs. Mixed flower beds edge a lawn divided by espalier trees and a rose arch. A willow fedge (a living woven structure) and rusty arch leads to a wooded 'dell' with wildlife ponds and semi-shaded planting. No wheelchair access.

25th June
28 Morden Road SE3 0AA
Susan & Roger Taylor
A formal garden frontage with box, olives,

yew and hydrangeas leads to a rear garden surrounded by mature trees. There are colourfully-planted containers on the terrace, two small deep ponds with waterlilies, acers, ferns, hostas and lavender, a number of sculptures and shady seating areas. Wheelchair access to the terrace with a good view of the garden. Wine and soft drinks for a suggested donation.

25/26th June
5 Vanbrugh Hill SE3 7UE
Colin & Fern Still
'As the crickets' soft autumn hum is to us, so are we to the trees, as are they to the rocks and the hills....' Gary Snyder
A largish garden, somewhat Japanese in inspiration, has thirty trees - some of them very tall - three ponds, a number of very craggy rockeries, a thousand cobblestones creating a river- like feature and a black steel sculpture by the artist Ian Tyson.

Entry to all gardens: One weekend £14
Both weekends £20 Single garden £5 Kids go free. Paper tickets in advance or on the door (cash only). Buy online at: communityhospice.org.uk/open-gardens-festival. All proceeds go to Greenwich & Bexley Community Hospice

Fire Brigade Offers Free Home Safety Checks

Did you know that you can request free fire safety visits from the Fire Brigade?

You may even be eligible to have a free smoke alarm fitted. If you don't require this service maybe you know someone who might benefit from this scheme? The following information is from the London Fire Brigade website:



If you know or work with anyone who would answer yes to two or more of the following statements, please give them our details to arrange a free Home Fire Safety Visit – or you could, if they would prefer you to, organise a visit on their behalf:

1. Smokes in their home.
2. Is over the age of 60.
3. Lives alone.
4. Has: a) limited mobility, b) a hearing impairment, or c) is blind or partially sighted.
5. Would have difficulty responding to, or escaping from, a fire.
6. Has had a fire before, or shows signs of burns or scorching in the home.
7. Who has learning disabilities.

8. Is supported by family, carers and friends.
9. Has a mental health condition such as dementia or depression.
10. Has drug or alcohol dependencies.
11. Doesn't have an alarm in all areas where a fire might start.
12. Collects or hoards in their home.

Free smoke alarms
If you need them, the Fire Brigade will also provide and fit free smoke alarms in any room where a fire might start. This can be done on the day.

Extra help and support
Depending on your personal circumstances, we might also suggest extra help and support from other organisations. This could be to discuss things like fire retardant bedding or linking a smoke alarm to your Telecare system.

To find out more, visit the London Fire Brigade website, or call us free on 0800 028 4428

- email smokealarms@london-fire.gov.uk
- text/SMS 07860 021 319

--WN Reporter

Events

Mycenae House & Gardens

FRIDAY 17 JUNE 22 Doors 7.30pm - 10.30pm £5

Sonic Promotions present

KARA GRAINGER from USA

Top Flight Female Blues Guitarist. '...a major talent' Blues Blast Mag

plus MISSISSIPPI MACDONALD

Makin waves here and across the pond with his new album and an ever expanding tour schedule, he presents an acoustic session

Tickets: www.wegotickets.com/event/534335 £16/14 Conc

Do, See, Enjoy, Share, Experience

020 8858 1749
www.mycenaehouse.co.uk
90 Mycenae Road, Blackheath, SE3 7SE

Committed to the development of your community. It is a place for learning, wellbeing, culture, support and socialising. We hire halls for Celebrations and Family Parties, activities, meetings, events and all manner of things!

FEATURES

Create your own Blog Polly Morgan

With technology moving so fast, it's easy to feel overwhelmed - but it's also a great opportunity to capitalise on new ways of reaching an audience. Creating your own blog is a great way to reach new people, have fun, be creative, and get your message out there to the world.

I recently attended an interesting course at world-renowned college, City Lit in Covent Garden, called: How to launch your blog on WordPress, which is the latest platform to launch blogs on.

It was a great day, led by an expert tutor who took us through the step-by-step technical process of creating a blog from scratch on the online platform WordPress. WordPress is straight-forward to use, self-explanatory and free to a certain point, so do take a look at their website and you could almost teach-yourself how to create your own blog, or perhaps, like I did, research a course for guidance.

By the end of the day, I was able to insert video content, image galleries, pretty backgrounds and more to my blog; I was very happy with the results.

There is a wealth of topics you can cover, but the best blogs on the web start

as personal to the writer and develop into blogs that inspire many and can be followed by thousands around the globe. **Here are some tips to get you started:**

- 1 Understand your audience.
- 2 Check out your competition.
- 3 Determine what topics you'll cover.
- 4 Identify your unique angle.
- 5 Name your blog.
- 6 Create your blog domain.
- 7 Choose a CMS and set up your blog.
- 8 Customize the look of your blog.

And some more great advice:

- 9 Craft a great headline that readers can't resist
- 10 Write an introduction that grabs and seduces
- 11 Deliver advice that's easy to consume and impossible to ignore
- 12 Close with a motivational bang
- 13 Polish your post so it's smoother than a slip 'n slide

If you need some more inspiration to get cracking on blogging, then check out these great blogs which went viral and are deemed the 100 UK's best blogs: https://blog.feedspot.com/uk_blogs/

Write and Sing! Polly Morgan

On Friday 13th May, the West Greenwich library's Creative writing group put on a magical evening of poetry, prose, music and fun at this well-established local venue. Called 'Tongue Tied', the evening was a celebration of achievements by the writing group, a diverse, creative, fun bunch of friendly people from the local area.

Members from the group stood up in front of the eager audience and performed moving poetry on subjects as wide-ranging as Africa, romance and more. A great saxophonist gave us a fabulous musical interlude also. Then, the piece de resistance - local Southeast London choir, the Woolwich Singers, stood up and performed a range of songs, from Uptown Girl by Billy Joel to Viva la Vida by Coldplay and

the classic Lean on Me by Bill Withers. The music went down very well with the appreciative audience and library staff were on hand with light refreshments and plenty of drinks of all kinds. A great time was had by all and reminded us all of the social importance of getting involved in local creative groups such as this writing group and the local choir.

West Greenwich library's creative writing group meets the first Thursday of every month 7pm-9pm and welcome new members to come and get creative!

If singing appeals to the artistic muse in you then check out local choir, Woolwich Singers. They are very friendly, and you might just find your new musical hobby by joining! No audition needed; all are welcome: <http://www.woolwichsingers.co.uk/>



WestcombeNEWS Editor Wanted

The Westcombe News is published 10 times a year and seeks an Editor to work within a team to plan, revise and co-ordinate material for publication together with input from the Westcombe Society.

An editor would also assist with the layout of the paper and liaise from time to time with the printer.

Journalistic experience would be useful but not essential as assistance by a previous editor is available and training will be given on our easy-to-use publishing tool (Quark).

The computer needed can be provided. This is a voluntary position but necessary expenses can be paid.

For further details please contact info@westcombesociety.org or call 07939 386215 (Marilyn Little).



Volunteers' Week 1st-7th June

National Volunteers' week is a chance to recognise the fantastic contribution volunteers make to our communities and say thank you. **The Volunteer Centre Greenwich will be launching Volunteers' Week in General Gordon Square in Woolwich on Wednesday 1st June. If you are interested in finding out about what volunteering opportunities are available, join them between 10am - 4pm.**

Elizabeth Mercer, Vanbrugh Hill writes: "I have been a volunteer for many years, and it is a wonderful opportunity to get to know your local community, have fun - and help others at the same time. There are many local opportunities available, to suit all skill sets. Some of us may only be able to give a couple of hours now and again; I

have recently spent two hours with collection buckets (and of course, these days, contactless card machines) for the Royal National Lifeboat Institution at commuter stations in the early morning. It is wonderful to find how warm and responsive people are; not just your fellow volunteers who have come out to help, but also members of the public who are keen to give, and to thank you for your efforts. You also have the opportunity to learn about some fascinating charities and the work that they do. There are of course also many roles for those who are able to make a greater time commitment; these may enable you to really get to know a local charity, form friendships, learn new skills, and possibly enhance your CV.

Continued next column...

INVESTMENTS

PENSIONS

ESTATE PLANNING

STARKEY FINANCIAL PLANNING

Contact us: 020 8853 7160
admin@starkeyfp.co.uk

2 Charlton Road, Blackheath Standard, London SE3 7EX

Independent and friendly advice from south east
London's top team of Chartered Financial Planners

Starkey Financial Planning Ltd is authorised and
regulated by the Financial Conduct Authority



Roles currently being advertised in the local area include Safe Families volunteers (mentoring), local charity shop volunteers (retail and other roles) and collection box management for the RSPB (fundraising and community engagement). You can find out more at <https://volunteersweek.org/> including information on how to become a volunteer, and links to databases of local charities seeking volunteers. Whatever your skills, a local or national charity is waiting to hear from you."

Are you working remotely?

Is your IT secure and functional?



headstart IT Solutions

Is it time to upgrade?

Fast response from local experts in:

- Remote working
- Office 365 & other Cloud services
- Teams, SharePoint & email
- Managed security
- Networking
- Hardware & Software
- Desktops, laptops & servers
- Discounted rates for home users & charities

"Headstart provide us with exceptional service"

"Peace of mind and technical reassurance"

"Excellent service, friendly people"

Check out more of our testimonials at www.headstart.it

Call us for a free consultation

0208 858 2002
enquiries@headstart.it

WHAT'S ON

Celebrate the Queen's Platinum Jubilee!

See front cover for events and happenings.

Local Art for Sale

SMAGART, the not-for-profit company linked to St Michael's, Blackheath Park, announces SMAG 10, the latest art exhibition to take place both in the church and online, from Thursday 23rd June, opening night and party, to Saturday 2nd July.

Opening times and details of how to participate are on www.SMAGART.com So far their shows have raised over £17,000 for local charities and last November's exhibition had 260 pieces from 74 local adult artists with 46 works from 25 students on show.

A chance to enjoy local, high-quality art in a great setting at St Michaels Church.

Charlton House and Gardens

10th June - 1pm Friday Concerts: **Svyatoslav Antipov, piano** Free
17th June - 9.30am to 3.30pm
Open Friday: House Tours, Kids' Activities, and Producers' Market
17th June - 1pm Friday Concerts: **Aidan Chan, piano** Free
24th June - 1pm Friday Concerts: **Royal Air Force Salon Orchestra** Free
24th June - 8.15pm
Adventure Cinema: West Side Story £14.50 per ticket
25th June - 8.15pm
Adventure Cinema: Mamma Mia £14.50 per ticket
26th June - 8:15pm
Adventure Cinema: Rocketman £14.50 per ticket
1st July - 1pm Friday Concerts: **Flutes & Frets Duo** Free

Concerts in Greenwich Park

The season kicks off earlier than usual, on Sunday 5th June, with a special concert at the bandstand to celebrate both the Queen's Platinum Jubilee and the Friends' 30th anniversary. It features a band new to the Park, Tequila Brass, who play the upbeat, summery music of Herb Alpert and the Tijuana Brass, ideally suited to the occasion. This promises to be an outstanding event and picnics are encouraged. This concert, which is free, will be from 3pm to 5pm.

Diary Dates

Westcombe Society Events

24th September:
Annual Walk for Macmillan starting from Greenwich
30th September:
Macmillan Coffee Morning
Anyone who wishes to join in and support these two events please contact: info@westcombesociety.org

Westcombe News June 2022

Arts Society Greenwich



Picture Post 1950s
Lecturer: Howard Smith
7.30pm Monday 13th June

This extraordinary and nostalgic talk is part of a series of lectures on Graphic Icons of the Twentieth Century by Howard Smith. Picture Post, published by Hulton Press, was the first photojournalism magazine and in the 1940s was selling nearly two million copies a week. In 1950, under

editor Tom Hopkinson, a team of photographer and journalist would be sent to cover a story in depth to produce intimate and detailed articles on life in Britain. The result in 1950 was to put over a very strong message of the need for regeneration and social change through art, film clips, adverts, photographs and ephemera.

This lecture will be presented at The Bakehouse, Blackheath SE3 9LA (entry via Bennett Park) or on Zoom. Guests are welcome for a payment of £10 (in person, subject to space) or £8 via Zoom, and should contact ticaclark@hotmail.com to make a booking.

Due to limited space, members will be given priority to attend in person at The Bakehouse. For those joining on Zoom, an email with the link to the lecture will be sent a couple of days before
www.theartsocietygreenwich.org.uk

Midsummer Opera

Midsummer Opera present a Czech choral concert at 7.30pm on Saturday 25th June at St Alfege Church, SE10. The programme features Dvořák's Mass in D and two pieces by Janáček, 'The Lord's Prayer' and his 'Elegy on the Death of My Daughter Olga'. The Dvořák will be performed in its original version and for those more familiar with the New World Symphony and the Cello Concerto, reveals a more intimate side of Dvorák; Janáček's Elegy is poignant since the composer dedicated his opera Jenufa to her and played it to her on her deathbed.

The Chorus of Midsummer Opera will be conducted by David Roblou with tenor soloist John Upperton and accompanied by organ, piano and harp. Tickets cost only £16 including the programme. Book at www.midsummeropera.org.uk or by phone 020 7652 0070.

Mycenae Music

Celebrate summer with some great live music at our favourite Mycenae House:
Friday 17th June: **Kara Grainger**
Tickets via <https://www.wegotickets.com/event/534335>



Friday 24th June: **Voices From Windrush**
Tickets via <https://www.wegotickets.com/event/538671>

Half-Term at the Conservatoire

Indulge your creativity with some exciting painting, drama and art classes at the lovely venue, Blackheath Conservatoire: <https://www.conservatoire.org.uk/courses/adults>

REACH OUT Walk and Talk Group
Mondays 12-2pm. Meet outside main entrance at Mycenae House, SE3.
email: befriending@volunteersgreenwich.co.uk Tel: Abdi 07444 182 741

Greenwich Industrial History Society

14th June: **Photographs of Greenwich & Docklands Industry since 1970 - Peter Marshall**
19th July: **Morden College and its Archive - Elizabeth Wiggans**
20th September: **The Survey of London in the East End - Peter Guillery**
18th October: **Colliers – the work of the coal carrying ships – Roy Fenton**
All meetings will be on Zoom and details of how to book will appear on the Greenwich Industrial History Facebook page a few days before the event. Bookings will be on a first come, first served basis.

Caneletto at National Maritime Museum

Canaletto's Venice Revisited
This major exhibition displays the complete set of 24 Venetian views painted by Canaletto in the 1730s. The works, from the world-famous collection at Woburn Abbey, form the largest single commission the Italian artist ever received. The exhibition combines the Woburn paintings with drawings, prints, photographs, and other objects from Royal Museums Greenwich's collections, which will bring Canaletto's enduring and idealised views of 18th century Venice up to date with a consideration of the social and environmental challenges that the city now faces.
From 1st April – 25th September. 10.00am – 17.00pm. Suitable for all ages. Adult £10 Student £6.50. Child £5
URL: <https://www.rmg.co.uk/whats-on/national-maritime-museum/canalettos-venice-revisited>

A & A LANDSCAPES
Landscape Specialists

Free advice & estimates


Qualified horticulturalist

All aspects of soft & hard landscaping work carried out including
* Maintenance * Site clearance
* Turfing * Tree surgery
* Fencing * Patios
* Brickwork

Tel. 020 8318 2530

World-Famous Cellist Performs with Local Orchestra

We have publicised the concerts of St Paul's Sinfonia - a great local orchestra to Southeast London - before, and we are doing it again because they are that good! See it to believe it.

Witness world-famous cellist Sheku Kanneh-Mason, part of the Kanneh-Mason musical family taking over the classical music world, perform with this great orchestra this June:

Friday 17th June at 7.30pm, St Alfege Church, Greenwich: Emilie Mayer Overture No. 2 Haydn Cello Concerto No. 2 in D major, Coleridge-Taylor Ballade in A minor, Schubert Symphony No. 8 'Unfinished', Sheku Kanneh-Mason cello, Andrew Morley conductor.
<https://www.stpaulssinfonia.com/concerts/>

World Oceans Day

Join in the annual World Oceans Day celebration, this year focusing on the importance of collective action for ocean revitalisation and take part in a range of exciting family-friendly events, activities and talks across the site.
11th June at the National Maritime Museum. 10.00 – 16.00. Suitable for all ages. Admission: Free
URL: <https://www.rmg.co.uk/whats-on/national-maritime-museum/world-oceans-day-2022>

Greenwich Park Events

30th May to 4th June - Quantum Theatre presents The Tale of Peter Rabbit in the Royal Observatory Garden
4th June - Greenwich Meridian 5 and 10 km run (approximately 150 participants)
16th June - start of Charity Cycle at 9.00am



The Woodlands Farm Half Term
Wednesday 1st June Jubilee Trail and Crown Making 10am-1pm. No need to book just drop in! £4.00 per child
Shooters Hill Road



MEfA Montessori School
Montessori House, 135 Westcombe Hill, Blackheath
SE3 7DP
Tel: 0208 305 2203

Now enrolling in all classes:

- Montessori School (2-9 years)
- Montessori After-school (4-11 years)
- Montessori Forest School (all age)
- Montessori French (all age)
- Baby Montessori (0-15 months)
- Toddler Montessori (15-24 months)

Enquiries: Call Wendy on 07710 433 994
Charity Registration No: 1136552

ENVIRONMENT

Planning applications can be viewed in the library, or at the Woolwich Library on the lower ground floor of the Woolwich Centre, 35 Wellington St. They may also be viewed on: [www. greenwich.gov.uk/planning](http://www.greenwich.gov.uk/planning)

Blooming Lovely

Anne Robbins



Local rail users have been admiring a bright display of tulips recently at Westcombe Park Station. With funds from Thameslink, which provided some shrubs and fresh compost, a small group of volunteers, and donations of plants from local gardens, Platform 1 is looking much more cheerful.

The tulips were a kind donation from the Charlton and Blackheath Amateur Horticultural Society; the daffodils that bloomed so well earlier in the spring came from Greenwich Park, via the Christchurch Community Garden in Blackwall Lane

(well worth a visit on Friday mornings). This sort of cooperation has been a real boost for the station gardeners. Recent gifts include a few sunflowers, snapdragons, Mexican fleabane, Japanese anemone, and cyclamen, very gratefully received. The station staff have been happy to fill buckets of water, and provide bags for the rubbish which still accumulates. And it's lovely to hear compliments from station users, too.

The group has extended beyond the original planting, digging out some bamboo and woody shrubs that were dead or on their last legs. But there are weeds aplenty, which has kept the gardeners very busy; sycamore seedlings, green alkanet which looks like borage but takes over where it's been ignored, and three-cornered leek, a prolific spreader in the onion family. These will have to be dealt with every year, and the gardeners would love more hands to help with this and find the right plants to fill the space. Normally the group works on Wednesdays, 1-2 pm; if there is enough interest we could look at a Saturday session. Please get in touch via the Environment Committee (environment@westcombesociety.org), or come along.

Planning Enforcement

Maggie Gravelle

From time to time the Westcombe Society becomes aware of planning regulations that are not enforced, for example work that is being done without permission. RBG is clear that they would like the public to report breaches to the Planning Department and that they will investigate complaints. They state that "this information is very useful to the Royal Borough and plays an important part in protecting the local environment and preventing damage to trees."

PLANNING APPLICATIONS

(See also <http://www.westcombesociety.org>)

- 40 Vanbrugh Hill ref 22/1659/HD**
To construct single storey side infill and rear wraparound extension and replace windows.
- 16 Glenluce Road, Flat 1, ref 22/1368/F**
To construct single storey rear extension and external alterations.
- 67 St Johns Park ref 22/1324/HD**
To construct single storey side and rear extensions and associated works.

Footpath Opposite 1a Vanbrugh Park Road ref 22/1528/T3
To install 18-metre high phase 8 street pole with large cabinet, 3 ancillary cabinets and ancillary works.

Planning Applications cont.....

TREE WORKS

35 Glenluce Road ref 22/1194/TC
To fell sycamore in rear garden and crown reduce bay and oak by 20%.

31 Mycenae Road ref 22/1638/TC
To crown reduce two sycamores by up to 3 metres on rear boundary.

15 Westcombe Park Road ref 22/1593/TC
To fell large ash in rear garden and reduce height of purple plum, cherry, holm oak and sycamore. In front, to reshape sycamore, 4 olives, and holly.

Sometimes people are not clear about the regulations, for example, connected to tree pruning or felling. The council website explains that permission needs to be obtained for certain tree works:

- if the tree is in a conservation area
- if it has a Tree Preservation Order (TPO) attached to it
- if the tree is protected by a planning condition.

If building work is to be carried out which could affect a nearby tree then a condition may be applied to the planning application requiring specific protection for the tree. Alternatively, planning permission may require replacement of any damaged or felled trees. This was recently the case in a local development where a healthy, mature tree was meant to be protected as a condition of planning permission being granted. In the event there appears to have been damage to the roots which may affect the health or even the viability of the tree.

The Society has approached the Planning Department in relation to an out-building that has been erected without planning permission. The local authority have contacted the owner requiring the removal of the shed, although this has not yet taken place.

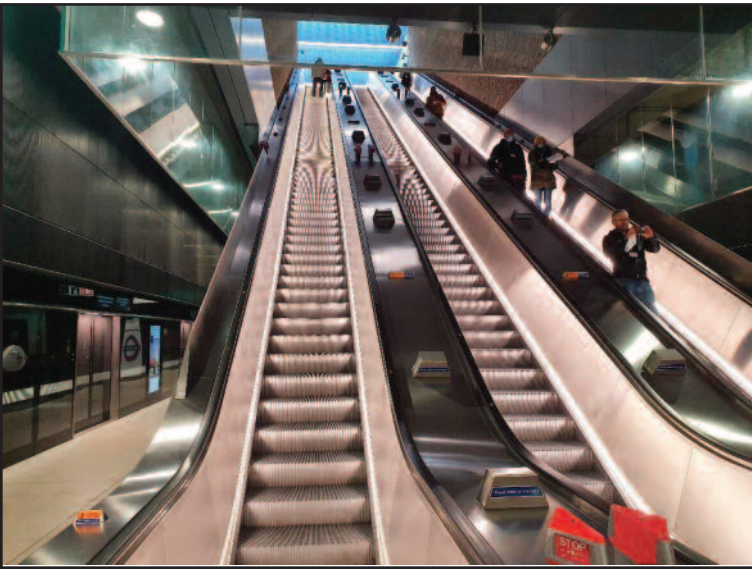
In a similar case, permission was given for a summer house to be erected in a local garden. Neighbours were concerned when it appeared that this was being used as a dwelling. The Planning Enforcement Officer contacted the owners, explaining the conditions surrounding use of the out-building and in particular that it should not include any cooking facilities. Since then there appears to have been continued use of the building as a dwelling and it has now been advertised for sale. The agent describes the property as having a "recently-built cottage that would be perfect for multi-generatil families, as a home office or as a nanny/granny annexe."

The Westcombe Society supports RBG in rectifying the breaches in planning

cont. on next column.....

IMPACT OF THE ELIZABETH LINE (CROSSRAIL)

The Elizabeth Line opened on 24th May and brings the Crossrail project nearer completion, at present operating in three sections, one of which is Abbey Wood to Paddington. It promises to be a fantastic railway but, even though it does not touch the Greenwich line, it is likely to have an impact on it and does have potential downsides for users of the line. Crossrail was



conceived as a way of meeting ever-growing demand and the need for increased capacity but Covid has changed that. To begin with the positive, the line will improve connectivity. It is unlikely that many passengers will travel from this area to Woolwich to access it, but the Thameslink services provide a direct connection at Farringdon. Travel from this area to Paddington, West London and Heathrow Airport will become easier and will avoid the underground. Heathrow could be reached from Westcombe Park, when the line is fully open, in about 1 hour 10 minutes.

There are two potential downsides, the first of which arises from a change in travel patterns. It is likely that passengers from

stations east of Abbey Wood travelling to the City or Central London will change on to the Elizabeth Line at Abbey Wood instead of travelling to London Bridge or Cannon Street and then getting the underground or a bus. From Abbey Wood, Liverpool Street will be reached in 18 minutes, and Tottenham Court Road in 24 minutes. This is an attractive journey option and will inevitably reduce the train loadings west of Abbey Wood, including on the Greenwich Line. That will be some benefit at peak times, but makes it less likely that the 10-minute off-peak frequency of services we enjoyed pre-Covid will be restored.

The second potential downside in the longer term arises from the campaigns to extend the Elizabeth Line from Abbey Wood to Dartford or Gravesend. Organisations supporting this include Bexley Council. The trouble is that the only way this could be done is by using the existing infrastructure and freeing up capacity on the historic railway. That could threaten services on the Greenwich line, which use the same line to reach Slade Green and Dartford. This has been recognised by Bexley, who accept that traditional services would need to be cut back if Crossrail is extended. It is something the Users Group will be keeping an eye on.

**-Mike Sparham
Greenwich Line Users Group**

Planning Enforcement cont.....
regulations and follows up on them where possible. Planning regulations can seem daunting, but they are intended to keep the area safe and attractive. Guidance and advice are available on the Council website, <https://www.royalgreenwich.gov.uk/>

A recycling thankyou....
for the lovely rocking chair I found outside a house in Westcombe Hill; the previous owners kindly saved it in the garden for me until I found another helpful person to carry it home for me. E.M.



St Olave's Prep School



Contact us for further information or to arrange a tour

“ The quality of the pupils’ academic and other achievements is excellent ”
ISI Inspection Report

www.stolaves.org.uk. Call 020 8294 8930

THE OUTDOORS

Two Days Out in Kent

Anne Williams

Everyone needs a day out from these ‘four roads’ - a friend’s McCarthy-esque description of what is now a car-congested neighbourhood.

So I’m always pleased to head out in search of country havens that give my soul some fresh air and space to breathe. This month I chose two places, both in Kent, to visit, The Oare Nature Reserve outside Faversham, and Eagle Heights, Eynsford.

Oare Nature Reserve said it was wheelchair/buggy accessible but the trail I found started with a kissing gate. I looked at my companion, he looked unsure. My dog bowled through to the spring meadow beyond and started barking. It was a perfect place to play ball. I watched the two play, not fazed I couldn’t join in, it was so peaceful there with the sun shining from a clear blue sky, bringing the colours of the meadow flowers fully alive. The grass definitely seemed greener here. There were hikers about and I was pleased to see a thriving cafe advertising sandwiches for the trail.

Oare creek/inlet is the centrepiece of it all, with moored boats along the narrowest bit. So many to look at, all shapes and sizes - some robustly afloat, their decks and hulls freshly painted, others half sunk, abandoned like broken dreams, ‘Second Wind’, ‘Bridgette’ and ‘Freedom Found’ were no more!

I breathed in the diesel-tinged air (it got fresher the more ‘out to sea’ you went) and asked passers-by if there was a more accessible path. Most shook their heads but then someone pointed out a small gap in

the hedgerow. A man-width path that led to the well-known pub. It was about half a mile through the sort of naturally diverse undergrowth I could only dream about back in Blackheath. The pub’s garden sat alongside the bigger inlet where we watched the boats returning from a ‘jolly’, their occupants’ windswept hairstyles unable to obscure the joy and relaxation on their faces. There were also boats going out and these occupants were looking expectantly seaward wondering what the trip had in store for them.

The hour and 20-minute drive had been well worth it, I loved this place, there was wildlife aplenty, space to breathe and beautiful vistas of meandering waterways. We found this skeleton on a mudbank and have been researching what it could be. Any ideas?



Eagle Heights Wildlife Foundation is nearer, only a 35-minute drive from here and sits on a high spot overlooking open countryside and the quaint toy town village of Eynsford. Our destination was off the village and along a mile long driveway through open fields.

EHWF rescues animals and are serious about conservation of habitats, leaving many areas overgrown, providing habitats for invertebrates which benefit the wild songbirds. There are also specifically planted areas for butterflies and bees, and long grass areas for shrews and voles.

However it was the rescued animals and birds of prey that captured my attention. Falcons, vultures, eagles, owls, a whole pack of Huskies and all of these can be clearly observed in their open cages. I also met two huge pigs, small cats, llamas, meercats and my favourite, a stork with an impressive wingspan and very dirty legs.

There are two bird displays a day, I went to the 12 noon display and sat in awe of the snowy barn owl being shown to us. Its keeper said it was an imprint owl who had been hand reared by her. This meant, she told us, that the owl didn’t know himself to be an owl and saw us all as potential family that would feed him. He tooted and squawked a lot and we learnt that the tufts on his head weren’t ears - these being set at different points either side of his head, one high, one low. I learnt that owls weren’t particularly intelligent, not like the Striated Caracara we saw later who, during the Falklands war, put the soldiers’ land mines to great use dumping fresh fish on top of them and luring a big fat seal for a meal.

It’s possible to camp there and go on a husky walk in the morning, to date they have rescued 30 of this breed; or have a cream tea party (perhaps the rescued meerkats are invited?). In all seriousness though, the Centre feels that time spent with the animals, and learning from their keepers, will inspire visitors to be more aware about the conservation of our planet and its inhabitants. I know myself all I learnt and saw after one short visit and the images and information, presented with such style and entertainment, will stay with me. They offer an adopt-an-animal program and I’m thinking of adopting the stork as I have never seen one so close-up before. It bears only a passing likeness to those found in children’s storybooks. In the blurb outside his cage it explains its dirty legs, saying it likes to go to the toilet on them, or at least I think that’s what it said. Apparently he comes out for the afternoon displays but only for the female keeper, he doesn’t care for the other keeper.

Email: office@eagleheights.co.uk
Telephone: 01322 866 577 (General Enquiries Only)

Wildlife Trust- 30 Days Wild!

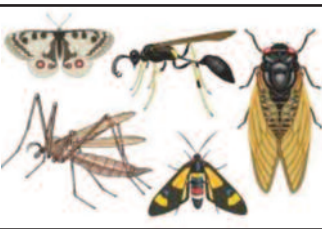


The Wildlife Trusts are counting down the days until the start of this year’s ‘30 Days Wild’ – the biggest annual nature challenge in the UK - where The Wildlife Trusts invite people to do one wild act every single day during the month of June, with the aim of bringing people closer to nature.

Last year a record 760,000 took part and approximately two million people have participated since ‘30 Days Wild’ began in 2015.

For each of the 30 days in June, a new challenge is set, with information and tips on how to become involved.

Some ‘Wild’ acts suggested are: bug-hunting, taking on a fundraising challenge for wildlife or simply having a meeting outside, eating lunch on the grass or picking up a piece of litter on a walk, there are lots of ways – big and small – to go wild and connect with nature.



When surveyed, most participants said their favourite activities were those that directly helped nature, or those that expanded their knowledge of the natural world.

Sign up on the <https://www.wildlifetrusts.org/> website to receive a free pack, by email or in the post; (business pack only available digitally) - and receive lots of fun activities to do throughout the month to keep you inspired. Only the individuals and family packs contain wildflower seeds, but don't worry - the others contain lots more fun stuff! Examples of the challenges set include:

- Have breakfast outdoors
- Help a hedgehog
- ID a bee
- Camp in your garden or living room
- Appreciate a tree
- Go on a bug hunt

It would be great to have as many Westcombe residents as possible participating in this national event, and going out into all of the wonderful open spaces that we have available to us. If you choose to take part, feed back to the Westcombe News about your experiences (your favourite local trees, identified bees, etc.) would be much appreciated. Good luck!

-WN Reporter



FROM JUST £999* A MONTH

- ✓ Expert childcare from 7:45 to 18:30 everyday
- ✓ Small classes taught by qualified teachers (during term time)
- ✓ Step up from day nursery and prepare your child to start school

A NURSERY PREP SCHOOL EDUCATION IS MORE AFFORDABLE THAN YOU THINK

*lunches and incidental costs extra, includes government early years funding

THE POINTER SCHOOL

<http://pointers.school>

R.G. Austin
(Established 1963)

Heating Engineers,
Property Maintenance,
Electrics, Painting,
Decorating, Plumbing,
Central Heating,

GAS
SAFE

Shower and Bathroom Specialists

2A Hassendean Rd, Blackheath SE3 8TS
Telephone: 0208 858 7359
rgaustintltd@gmail.com

Emergencies: 07738124344
email: rgaustintltd@gmail.com

**GUTTER AND WINDOW
CLEANING SERVICE**

- High reach ladderless Gutter cleaning
- Downpipe unblocking
- Reach and Wash window cleaning

Call/Text Mike
07791 465052
reachnwash@gmail.com

PAINTING & DECORATING

- Interior/Exterior/
- Experienced Reliable Clean
- Fully Guaranteed/Insured.
- References available.
- Free no obligation quote and advice given

JOHN at JAMES & LAMONT
Office 020 8462 4646
Mobile 07802 535695
jamlam.john@btinternet.com

WRISTWORTH HEATING & PLUMBING

Installation - Servicing - Repair

Tel: 07725 003280
Email: wristworth@hotmail.co.uk

Check Out Our **NEW** Website: wristworthheating.weebly.com

