



Westcombe NEWS

Free to 3800 homes, in libraries and shops and online

October 2021 No.8



“Wild is the music of the autumnal winds amongst the faded woods” William Wordsworth

Good News Bad News

First, the good news. The Angerstein foot crossing has been saved and will not be closing. This follows a lively public meeting that resulted in the formation of an action group and concerted community opposition. Matthew Pennycook's support was also enlisted and Network Rail have finally conceded that while the original risk assessment was correct, they needed to take account of 'wider issues'. On inspecting the site and alternative routes it was decided that risk mitigation measures for the crossing were sufficient. Network Rail asked for the community's co-operation in ensuring the safe use of the crossing and reporting any misuse. (see more on page 7)

Now, the bad news. In June we reported on the proposed development at Morden Wharf which included four tower blocks (the tallest 36 storeys) on a site that would be visible from much of Westcombe Park and from Greenwich Park. The application was narrowly approved at a Planning Committee on 7th September with the Chair casting the deciding vote. The hearing included evidence from Historic England who argued that the development was too far away from Greenwich town centre to have any appreciable impact on the World Heritage site or on the Grade 1 listed buildings around the Park. Local opposition was strong and included the council's own conservation officer. MP Matt Pennycook said he was “incredulous” that the scheme had been approved and local councillor Geoff Brighty, a member of the committee, said allowing the development would be “municipal vandalism”. This result is a disappointment for the many local residents who oppose such a massive development.

Maggie Gravelle

Welcome Back to Woodlands Farm



It has been really great welcoming visitors back to Woodlands Farm after having to be closed for far too long: our gates are now open!

Our Education activities have restarted and Hannah, helped by her volunteers, is managing pre-booked visits from schools and community groups with a range of workshops, mostly taking place outside. Then, Toddler Group is back too, again pre-booked, you can see by our photos that a great deal of fun is still being had. The Stick Man trail through the farm is very

popular for other young visitors too.

Round the farmyard you can see our two Tamworth sows and their piglets and the new young hens, who have started laying. Cattle and sheep are mostly up in our further fields so we hope to continue tractor-pulled trailer excursions for visitors to get closer. Old friends of the farm will be happy to see that Bob the pony is still resident on site, usually nearby the yard.

We've started selling our own produce again - apples, damsons and other fruit, all free of chemical sprays. For those stocking

up for winter our log shed is full of very well-seasoned, dry timber at £7 per bag. We're pleased that Sitopia's pop-up stall on Saturday is attracting custom too, their space on our Arena Field looks well-justified.

And to top it all, we are planning our first event since 2019 – Harvest and Apple Day on 17th October. We'll have our usual great range of English apples, cider, live music, some other great quality food stalls, the good old Treasure Hunt and, weather permitting the tractor excursions round the fields. It'll be free entry, but our donation boxes and new QR codes are always available. It's been quite hard work to keep the farm viable over the past year, so we're grateful for all help.

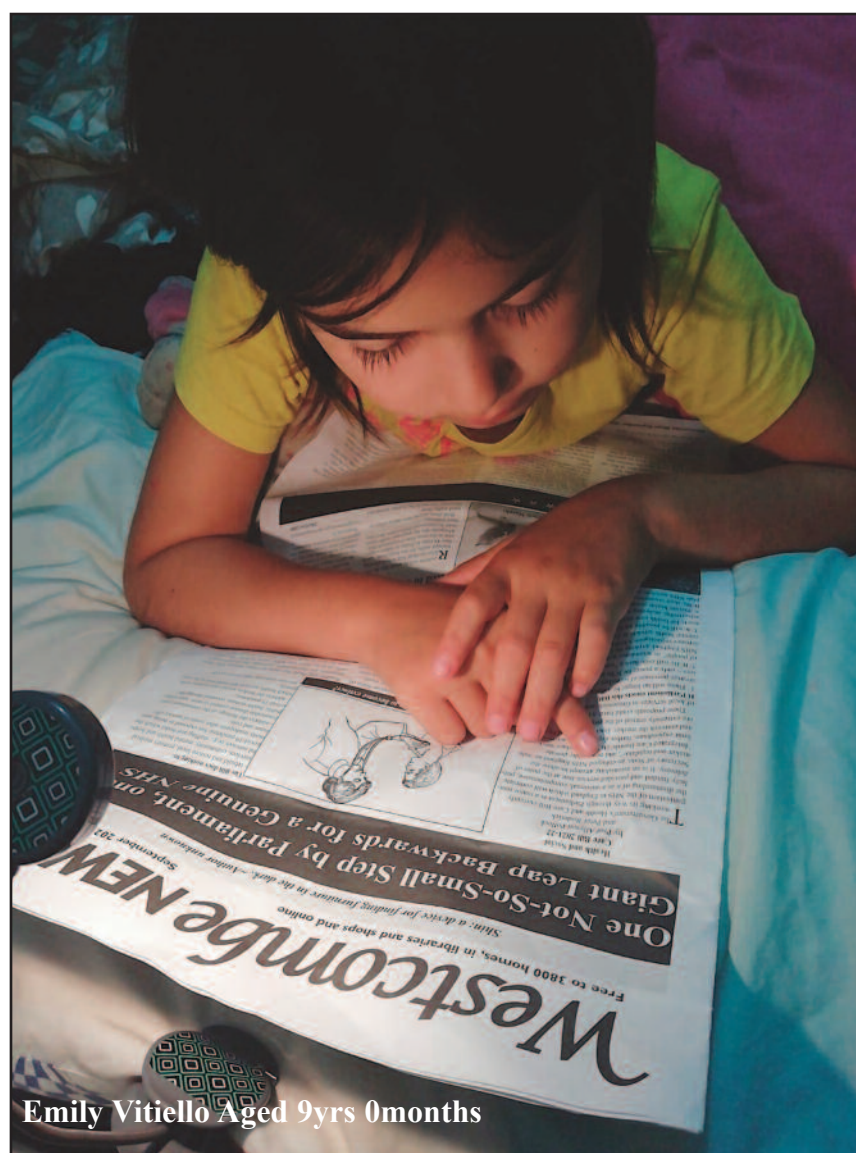
Here we are again, Tuesday to Sunday 0930 to 1630 generally and come along on 17th October to celebrate the English apple.

Our website www.thewoodlandsfarmtrust.org has information on all events and how to contact. Lots of our supporters come from this area, so it's good to keep them in touch.

More Farm news..., on 4th October, our Chair, Barry Gray, is to be awarded the Honorary Freedom of the Borough, in a ceremony with Bernadine Evaristo and Dr Kevin Fewster, who was Director of Royal Museums, Greenwich until 2019.

- Maggie Jones

Has WN Found its Youngest Reader?



Emily Vitiello Aged 9yrs 0months

Congratulations! MumsAid

Following a rigorous selection and assessment process, MumsAid was chosen from more than 350 charities across the UK as overall winner of the 2021 GSK IMPACT Awards.

MumsAid will receive £40,000 in unrestricted funding as well as expert support and leadership development provided by the leading health and care charity, The King's Fund.

The charity was established in 2012 to offer help to women struggling to cope emotionally with pregnancy or a new baby. Up to 1 in 5 mothers develop mental health problems during pregnancy or within the first year after having a baby. The problem is even more severe among young mums, with more than two thirds of pregnant women aged between 16 and 24 years reporting mental health issues. Data shared with the awards judges showed that 89% of women supported by MumsAid had an improved bond with their baby and 94% showed improvements in their mental health.



specific programme to offer counselling and support for young mums, providing constant and non-judgemental support at a crucial time in their lives.

MumsAid are Greenwich-based with their services being free to all those living in the Greenwich borough. During the pandemic they operated all the counselling services online with no break in service, which they are very proud of. MumsAid also ran several well-being groups, art, journaling and singing groups which were accessible to anyone in the country as they were online.

They also run a private service which again is open to anyone, and half of the fees paid are put back into the charity.

The best point of contact is their website. It has all the different ways to contact MumsAid and there on it there are also useful links/info.

<https://www.mums-aid.org/>

Greenwich has one of the highest teenage conception rates in London, and the charity runs a

NEIGHBOURHOOD

WESTCOMBE NEWS

PUBLISHER

The Westcombe Society
c/o 163 Westcombe Hill, SE3 7DP or
info@westcombesociety.org
Chair: Marilyn Little
Tel: 0208 853 1312

EDITOR

Anne Williams
All editorial correspondence to:
wnews@westcombesociety.org

EDITORIAL TEAM

Richard Lovegrove
ALL PRESS MATERIAL TO BE SENT TO:

wnews@westcombesociety.org
Deadline for October copy:
18th October 2021

SUB EDITOR

Annie Grey

ENVIRONMENT

Editor: Maggie Gravelle
All comments and queries to
Emily Norton: 0208 853 2756
environment

ADVERTISING

Jenny Senerat
advertising@westcombesociety.org
Deadline for Advertising:
16th October 2021

DISTRIBUTION

Emily Norton and volunteers
Tel: 0208 853 2756

PRINTING

Trojan Press.
Email: dave@trojanpress.co.uk
www.trojanpress.com

The views expressed in the Westcombe News are not necessarily those of the Westcombe Society or of the Editor.

We take all reasonable precautions to protect the interests of our readers by ensuring as far as possible the bona fides of our advertisers but cannot accept any responsibility for them. Any complaints should be addressed to the advertiser.

To access back numbers (in colour) go to:
<http://www.westcombesociety.org/westcombenews>

Looking For a New Interest?

Autumn is the time when many of us look around for a fresh interest and a chance to meet new people. At one time there would have been an ample choice of day and evening courses provided by local authorities, but restricted funding means that such provision has been severely reduced; the emphasis now being on much-needed vocational courses and further education courses. An alternative source of both learning and pastimes is provided by the University of the Third Age, a national self-run organisation which provides a variety of interest groups, led by experts and enthusiasts. The local branch is U3A South East London which covers the boroughs of Lewisham and Greenwich. Many groups meet in private homes, while others meet in a number of venues, the St Mary's Centre in Eltham High Street being a major one.

Subjects covered range from Ancient History to Birdwatching and there should be something for everyone in the programme. Locally there are two reading groups and a Scrabble group, but most venues can be reached easily by public transport.

To find out more, go to the website U3A South East London, where there are details of all the groups available at the moment. Many have continued meeting on Zoom throughout the pandemic, and others will re-start once members are confident about meeting face-to-face again.

The cost is currently £20 a year, for which you can attend as many groups as you wish, but because members meet in private houses, there is sometimes a waiting list.

- Janet George

Blackheath High School Reaches Out

Blackheath High has a long tradition of community work, but this year marks a change in direction as we now have a dedicated time slot within our timetable to invite our neighbours into school, and for us to go out into our community and forge connections.

There are many ways in which we are reaching out and lots of my friends will be helping by supporting local primary schools with paired reading, making oral history films in care homes and working in local charity shops. We will also be cooking meals for the Evelyn Community Centre, making pillowcase dresses for girls living in orphanages and embarking on a series of fundraising activities.

As a school, we have recently developed links with Mycenae House and will be holding a series of our highly-successful 'Classics for Kids' concerts, open to pre-school children, babies and their carers who live in the area. In addition, our school theatre will be home to a regular sit-down aerobics class for people who are less mobile and I am looking forward to working with my teachers to welcome people living in the local area to our school.

-Eden Chambers, Year 12

Use it or lose it SHOP LOCAL! (please)

There are good reasons to 'shop local'.

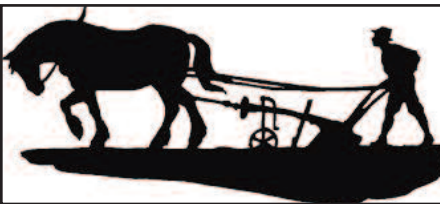
It's to support local businesses and about the choices we make to get to carbon net-zero. One of the important ways we can do that is to use our cars less. That's only realistic if we have a good range of local shops within a 15-20 minute walk or cycle. This was brought into sharp focus whilst Covid raged through our lives. For many of us in Westcombe Park, the Standard is actually that '15 minutes away high street'. Many communities do not have such a great mix of shops, cafes and other services in their local area. It's therefore something we need to support in order to sustain.

- Helen Warner

So What's New In The Shops?

Kazim Kilic, one of the owner brothers of Brothers Bakery fame, is very proud to offer his customers a proper Ploughman's Lunch at his shop. What exactly is on the plate depends on what's in the fridge that day (as would have been the case in an original farmhouse kitchen). So along with the staples of a ploughman's - bread, cheese and pickle, his customers could see a slice of pork pie, a tomato, cucumber, and other fridge bounty added to the plate. Price just £6.95. The original ploughman would have carried his own knife, but as this isn't allowed these days, Kazim will offer you a knife but you can eat much of the fare with clean honest hands.

"It's all about leftovers and using up food creatively", Kazim says. "A lot of people don't know what to do with leftovers so they waste them ... unlike in our Grandmas' day", he adds. Kazim likes English food and wants to bring some nearly extinct culinary delights back on his cafe's menu, especially the working man's classics such as the pasty, which was originally a miners' lunch, and he bakes his



own version of the humble bread pudding (used to be known as Beggars' pudding) called Bakers' pudding which is made from fresh leftovers of various buns, pastries and bread.

So will Kazim be bringing Ye Olde English egg custard tart back? He shrugs, "I'm a business man, if I can create the demand I will." He didn't seem that confident of success as anyone who has eaten a Portuguese pastel de nata knows how delicious they are. Maybe if Kazim could research an original, more delicate recipe, before the mass market manufacturers got hold of it, his customers will be won over.

-Anne Williams

West Greenwich LTN Public meeting

23rd September

Attendees were invited to air their views on the LTN proposals. Conducted by Denise Hyland with Sarah Merrill and the new Assistant Director of Transport in attendance. At the 6.30pm event over 30 strongly held views were vocalised by residents from both West and East Greenwich and included Blackheath Hill. Many of these showed that views within the areas themselves were not shared by all residents. All attendees were asked to ensure that they responded to the consultation at <https://consultations.royal-greenwich.gov.uk/>

Neighbourhood Growth Fund (GNGF) Awards

The following are the projects awarded funds from Round 4 of the Greenwich for Blackheath Westcombe ward:

MEfA Montessori - Greenhouse/Potting Shed Project

Invicta School - Play Space and Meeting Room

Platform Cricket - Coaching for local clubs and schools

Blackheath Halls - Recording, editing and on-line hosting equipment



"Our beautiful greenhouse has been installed in the Forest School and Well-being Garden. This will enhance the range of activities that the children and families can enjoy throughout the year."

Next year's seeds are already being chosen!" Wendy Fidler, MEfA Montessori.

Newsbriefs * * * *

A Local Award

Tudor Grange is proud to announce that it has been awarded a Gold Award Certificate by Housing 21 in the Housing Quality Standards Awards 2020. Congratulations to Denise Marney, Manager, for all her hard work.

Secondary School

All parents of Year 6 primary school pupils - your applications need to be in by 31st October.

Vaccines for School Children

Royal Greenwich GPs supported by Oxleas Young Greenwich school nurses, are bringing the vaccination programme to young people aged 12 to 15 who are eligible and have the necessary parental consent.

WESTCOMBE SOCIETY MEMBERSHIP

**Please send this membership form to:
Christine Legg, 69 Mycenae Road,
London, SE3 7SE**

Name.....

Address.....

.....

Tel.....

Email.....

Please enclose payment as appropriate:

Family Membership £12 []

Individual Membership £8 []

Senior Citizens/Unwaged £4 []

Westcombe News October 2021

An integrated filtration and salt free scale prevention system – all your water treatment needs in one easy-to-install, low maintenance package.

pure water point
exceptional water at home

**NO SALT
NO LIMESCALE**
THE PROVEN ALTERNATIVE TO WATER SOFTENERS

Visit our new showroom at:
162 Westcombe Hill,
Blackheath, SE3 7DH

IMPROVED WATER QUALITY
SALT-FREE AND CHEMICAL-FREE
WATER SUITABLE FOR DRINKING
ENVIRONMENTALLY FRIENDLY
REDUCED ENERGY CONSUMPTION
FIT AND FORGET - NO TOPPING UP OR REGULAR MAINTENANCE

For more information on how PureWaterPoint can help you... visit: www.purewaterpoint.com or call: 020 8922 1939

99.6% EFFICIENT
WATER SCALE PROTECTION
INDEPENDENTLY VERIFIED

WESTCOMBE SOCIETY

FUNDRAISING FUN



Macmillan’s representative and our very own Marilyn Little, Chair of the Westcombe Society

The Macmillan Walk

The annual Westcombe Society charity walk for Macmillan Cancer Support is always a delight, and this year’s event was no exception. The weather was perfect - warm with a gentle cool breeze - and the Thames was magical with gulls swirling and diving. Walking from Erith to Woolwich or further, to Greenwich, throws up impressions of an age when industry and cargo dominated this part of London. Mudflats and marshes, rusty industrial remnants from another time and then suddenly, a patch of lush riverbank and a glimpse of Canary Wharf.

The walk was a complete win win: terrific sights, great company and £275 was raised for Macmillan Cancer. *Thanks to all who contributed.*

Invites for the Chrysanthemum Tea

This special Tea for Senior Citizens is being served on Saturday 9th October 2.00 - 4.00pm. It is by invitation and they have been sent out. If you haven’t had your invitation, or are new to the area and would like to come, please ring Joanne on 07709 571777. See you there.

Letters

Six letters with widely opposing views were received on the NHS article in the last issue. These can be found in full on the Westcombe Society Website. The following are extracts from two of the letters:

“At the recent meeting of the parliamentary committee scrutinising the NHS bill the government made an important concession agreeing that "individuals with significant interests in private healthcare" should not be allowed to sit on NHS boards. However Integrated Care Boards can still award and extend contracts for health care services of unlimited value without advertising, including to private companies.”
Neville Grant, Vanbrugh Park

“Your article on the NHS raised fears that the proposed 'Integrated Care Boards (ICBs) will follow a model used in America's very different system. But the independent Nuffield Trust has concluded that these claims are "completely wrong - ICBs will be statutory bodies controlled by NHS England, tax funded, and covering everyone in a given area". I would urge readers to consider the Nuffield Trust's very balanced article on these claims at www.bit.ly/nuffieldtrustarticle - and draw their own conclusions.
Cllr Geoff Brighty, Blackheath Westcombe Ward

Macmillan Coffee Morning

The sun shone, the chat was effervescent, and so this year’s Macmillan Cancer Support coffee morning was an outstanding success – both in the funds raised for this most worthy of causes and in the happy, buzzy mood that prevailed. As ever, volunteers contributed to a fabulous assortment of goodies to eat, the deputy mayor of Greenwich, Leo Fletcher, popped by, the raffle went down a treat and more than £1,000 was raised. Thanks to everyone involved.



Above and below: Helper Christine and Theresa ready for action!



Westcombe Society events for your diary:
9th October
Senior Citizens Tea (Crysanthemum tea) at Mycenae House
27th November
Quiz night at Mycenae House
(Rescheduled Local Treasure Hunt will take place in October)

Our Very Own Veteran Oak

In 2011, the magnificent oak in Beaconsfield Close was added to the Woodland Trust’s register of ‘veteran’ trees. The girth of the trunk at that time was 5.96m measured 1.5m off the ground. It is a ‘pedunculate’ oak, as its acorns are on stalks. Oak trees are long lived and can take 200 years to reach maturity, and may live for 1,000 years. ‘Our’ oak is estimated to be around 300 years old. Any oak with a girth above 4.5m should be recorded in the register as ancient trees are part of our heritage. ‘Our’ oak is full of nooks and crannies, dead and rotting bits, all of which provide homes for thousands of animals, plants and fungi. In earlier times the oak stood in the garden of Fairfax House, 35 Beaconsfield Road, and survived World War II bombing which destroyed houses 31-35. Fairfax House was a grand mansion built for the master potter Frederick Garrard. The mansion had a lake at the Mycenae Road end of the garden, in what is

Animal Rescue!

A baby squirrel peeped over Tracey Parson’s tee-shirt, it’s bright eyes scanning its environment. Quickly it darted up around Tracey’s neck before disappearing again to run up and down her jumper. It seemed happy and carefree treating its rescuer as one of its trees in the local park. Tracey herself seemed unperturbed, afterall rescuing animals is something she cares passionately about. Indeed this local young woman, an ex John Roaner, is known all over London for her animal rescue service. Over the years she reckons she has helped hundreds, if not thousands. of wounded animals. She remembers her first rescue, a baby song thrush hopping about in her parents’ garden obviously abandoned or lost. Tracey had no idea how to hand-rear back then - there was no internet around that she could Google this skill. But she worked it out instinctively and found herself, to her parents’ concern, digging up worms at 4am and feeding them to her baby bird.

Tracey has so many stories of rescues, like the rescue of six baby ducklings left orphaned after their mother’s road accident by the Prince of Wales pond. It was physically challenging - Tracey had no waders and instead walked into the pond in her dress and shoes. “It took all day to catch five of the ducklings and three days before I caught the sixth. It was emotionally challenging, such a sad story and it took a lot of emotional heart energy to do the task.” With a feeling of accomplishment and relief she drove her little charges to the Swan Sanctuary at Shepperton.

This rescue prompted Tracey to ask Greenwich Council to erect Wildlife Crossing signs on the approaches to the pond. It took her seven months of campaigning but she got her signs. Over the years, Tracey has helped injured deer - I had no idea urban deer are to be found in so many places in London. Badgers (yes there is a sett in Catford), tawny owls, small owls (Tracey named them Frodo and Sam), a kestrel (as a bird of prey these must be passed onto a licensed rescue centre), pigeons, cats,

foxes, orphaned squirrels and more. She has had injured animals arrive by Uber and will never refuse to help an injured animal. “There is a trust and bond that develops between me and the animal I'm helping. A pigeon I cared for still comes to visit me daily.”

The animals are mostly injured by other animals, by human carelessness or conscious cruelty - something that saddens Tracey deeply. ‘It depresses me and upsets me that people feel disconnected from nature. That’s why I like the other work I do. I like my shop and all the beautiful things I sell.’ Tracey is also a talented artist - her chosen subject of course: animals. She has started taking on commissions for pet portraits and will exhibiting some of her portraits at the next SMAG art show in November.

Tracey has built up an address book of animal rescues and sanctuaries around the UK and has joined forces with her friend Rae who set up the Greenwich Wildlife Network. Together and with volunteers they rescue and transport wounded animals to the appropriate rescue centre. Some animals, like the non-native grey squirrel and birds of prey must be transported to licensed Rescue Centres. For the baby squirrels this means that sometimes they

have to travel all the way to Whitby if all the local licensed centres are full.

As well as being rewarding, rescuing animals is time-consuming and, long term, can produce an emotional fatigue which Tracey has experienced. She would like to train up others to become ‘hand-rearers’, ‘rehabers’ as well as ‘transporters’. “To lessen the load, so I can focus more on my personal life and creative projects although of course I’m available for advice, contacts and hands-on local rescues.”

If you would like to help Tracey in any way here are some contacts:
- <https://uk.gofundme.com/f/raising-lost-funds-for-whitby-wildlife-sanctuary>
- <https://www.greenwichwildlifenet-work.org> (Use the above contact for injured animals)
- <https://blackbirdboutique.co.uk>
<https://www.londonwildlife-protection.org/>
- *Anne Williams*

Craftsperson of the Month



Ten years ago Jane Wilson discovered the de-stressing creative magic of ceramics; and from that first “lovely feeling of moulding something with my hands” Jane moved from making one big pot to crafting partly-glazed ceramic pieces inspired by nature. After that first humble pot Jane got serious about ceramics, taking a course at Westminster Adult Education and then a two-year Higher National Diploma in Ceramics at Morley College. Jane went on exhibit in late July this year.

This potter can’t recommend the craft highly enough for soothing the nerves and making beautiful shapes. She of course still treasures that first big pot.

- *Diane Blackwell*

FEATURES

The Foundation for Kindness

There is no such thing as a small act of kindness – every act creates a ripple effect. Kindness is a skill that takes years to develop and refine. Consideration, respect and generosity are among the complex skills required to become a kind person.

Children do not simply ‘learn’ kindness, they need to live it. Kindness develops best when we are purposeful about building it, and environments that harbour and harness kindness are the most effective in building kind children.

Kindness raises other’s wellbeing and can also increase our own feelings of happiness and satisfaction. Serotonin and dopamine levels rise as we display kindness, improving mood and decreasing stress.

The links between nature and kindness are well known - spending time in nature encourages kindness and generosity. The great outdoors calms us and boosts our wellbeing; it is entirely understandable that key skills linked to wellbeing are encouraged and supported as we spend more time outside.

Kindness cannot grow where there is dysregulation*. In order for children to become self-regulators, the adults around them must support children’s potentially turbulent early years through steady loving support which is, namely, co-regulation**.

In this way children learn to understand their own feelings, they calm themselves after emotional episodes and find strategies to help them in the future.

Co-regulation is at the heart of empathy. It not only calms and supports children, but it also models kindness; it gives children opportunities to see kindness and empathy in action on a regular basis. This builds a slow, sure and steady understand-

ing of the experience of kindness. However, it is not possible for adults to model kindness if we are unregulated ourselves, especially when we are feeling low and particularly anxious and our amygdalae hastily enter into flight or flight ‘defence mode’.

Learning to be regulated is a life-long skill, but particularly necessary today in our world of Covid and uncertainty.

Kindness grows where there is sustained and intentional effort to build it. Kindness is the product of back and forth interaction and engagement, where heart and mind together have an emotional response, rather than a learned social behaviour.

The power of modelling and building kindness is profound. It may not be simple, but it is realistic and achievable – let’s start building kindness ambassadors today!

*Disregulation - also known as emotional dysregulation - refers to a poor ability to manage emotional responses or to keep them within an acceptable range of typical emotional reactions. This can refer to a wide range of emotions including sadness, anger, irritability, and frustration.

**Co-regulation - warm and responsive interactions that provide the support, coaching, and modelling children need to understand, express, and modulate their thoughts, feelings, and behaviours.

***Self-regulation is the ability to manage emotions and behaviour in accordance with the demands of the situation. ... It is a set of skills that enables children, as they mature, to direct their own behaviour towards a goal, despite the unpredictability of the world and our own feelings.

Wendy Fidler, MEfA Montessori School, Forest School and Well-being Garden



Gas Works jetty

New Book by Mary Mills Greenwich Riverside. Upper Watgate to Angerstein

This is an in-depth itinerary along the Greenwich riverside from the Lewisham border to the Charlton border. This is not a book about the areas the tourists visit - but about what was, and is many ways still is, an industrial and residential riverside with a strong relationship to river-based work and activity. It looks at how the area developed because of river use, but also how the proximity of the Royal Court, and closeness of the City of London, influenced the nature of much activity. It is also a story of some superlatives - the first this, the biggest that, and how the world changed because of what went on here. **£15 available from Amazon marymillsmmmm@aol.com**

PAINTING & DECORATING

Interior/Exterior/
Experienced Reliable Clean
Fully Guaranteed/Insured.
References available.
Free no obligation quote
and advice given

JOHN at JAMES & LAMONT
Office 020 8462 4646
Mobile 07802 535695
jamlam.john@btinternet.com

Locks & Alarms Ltd
Friendly service & Free
estimates.

We are a local family run security
business since 2002.

• Locksmiths • Home Intruder Alarms
• CCTV Systems • Security lights.

Tel 01322 436084
07429 598511 Jon
enquiries@locks-alarms.co.uk
www.locks-alarms.co.uk

A Burglary in St. John's Park

Charlie Peace was a small monkey-faced looking man in his mid forties. He was immensely strong, quick-witted and attractive to lonely wives and widows. (Looking at his picture there's no accounting for taste).

Little did his neighbours in Peckham suspect that Charlie (who called himself Mr Thompson) was wanted by the Manchester police for the murder of one of their number and several burglaries in the North of England. Now living in a small terraced house, growing a beard and staining his face with walnut juice and wearing spectacles, Charlie led an apparently respectable life for two years with his wife and children; attending church, entertaining people with his violin and monologues and carrying on his business as a picture framer. However at night he was busy breaking into wealthy people's houses and stealing jewellery and silverware.

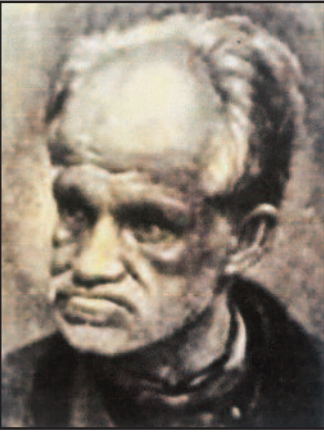
It was in the small hours of October 9th 1878 when he broke into a large house in the prosperous suburb of Blackheath, No. 2 St. John's Park. Because of the spate of burglaries in the district large numbers of policemen were on the alert that night. Police Constable Ted Robinson, passing by, saw a candle light flickering in of the windows at the back of the house.

Before investigating he sought the assistance of a sergeant and another officer. The sergeant ordered the two constables to go to the rear of the house and he then went up to the front door and rang the bell. On hearing this Charlie jumped out of the back window where he was confronted by Robinson. The desperate burglar pulled out the pistol he always carried and aimed it at the policeman firing shots, one of which

wounded Robinson in his arm. Undeterred, the constable punched Charlie in the face and got the cuffs on his wrists.

Their prisoner was taken to the police station in Park Row, Greenwich. He gave his name as John Ward and was charged with attempted murder. A month later he was tried under that name at the Old Bailey. The trial was brief and the jury didn't even bother to leave the courtroom.

Found guilty 'John Ward' was sentenced to life imprisonment.



Meanwhile his wife, with no money coming in from Charlie's nocturnal excursions, had her eye on the £100 reward still on offer for the capture of Charlie Peace. She told the police that the 'John Ward' in Pentonville Prison was in fact Mr Peace.

Charlie was charged with the murder of a man in Sheffield in 1876. Found guilty, he was hanged at Leeds Prison three weeks later.

PC Robinson recovered from his wound, received £25 for his bravery and died of old age in the Greenwich Workhouse at the bottom of Vanbrugh Hill in 1908.

IT SUPPORT
For ALL your home & business needs
Call now for FREE advice

020 8858 2002
www.headstart.it

WRISTWORTH HEATING & PLUMBING

Installation - Servicing - Repair

Tel: 07725 008280
Email: wristworth@hotmail.co.uk

Check Out Our NEW Website: wristworthheating.weebly.com

Discover The John Roan School
Open Evening - Wednesday 13th October, 6-8pm

Open Mornings 9-11am: Wednesday 22nd and 28th Sept
Wednesday 6th October

For families thinking about secondary school for 2022 and beyond, find out more at
www.thejohnroanschool.org.uk

The best in everyone™

 @thejohnroan
 facebook.com/TheJohnRoan

WHAT'S ON

Beethoven at 250 Classical Music's Greatest Revolutionary

Lecturer: Sandy Burnett
7pm Monday 11th October
Ludwig van Beethoven was born in December 1770. To mark this 250th anniversary, Sandy Burnett guides us through the life and work of this brilliant, cantankerous, visionary and astonishingly original composer, a man who tore up the rulebook of classical music.
Visual illustrations include a selection of contemporary portraits, while musical examples are drawn from his genre-busting piano sonatas, quartets and symphonies, and from the revolutionary opera Fidelio. We're talking about much more than just a musician here – Beethoven was a true Romantic artist, or as he preferred to describe himself, a “poet in sound.”
This lecture will be presented on Zoom. Members will receive email joining instructions. Guests are welcome for £8 - please email ticaclark@hotmail.com for further details.
Arts Society Greenwich
www.theartsocietygreenwich.org.uk

Blackheath Flower Club

Watch our talented demonstrators and admire and learn their skills.
1 - 3pm on the third Friday of the month in the Main Hall at Mycenae House.
19th Nov: **David Thompson**
- seasonal arrangements
3rd Dec: **AGM and Christmas Workshop: Wreathes and Table Decorations.**
21st Jan: **Richard Lovegrove.**
‘Twigs and Eco-Chic.’
All are welcome and there's a chance to win one of the six £25 flower arrangements in our raffle.
Your first visit to the club is free.
Contact Sian Tribe Tel: 07790 003037
siancaroline@googlmail.com



Arrangement by Jayne Edwards

*Music for an
Autumnal Evening*

Instrumental and vocal music to suit all tastes
Featuring musicians from Glyndbourne,
Trinity College, London's West End etc.

CHARLTON HOUSE LIBRARY, CHARLTON VILLAGE
SUNDAY, 10th OCTOBER 2021 at 7.00pm

Tickets: £15 (to include a glass of wine or soft drink) Tel: 0208 836 7373
IN AID OF 'REPAIRS TO THE ROOF OF CHARLTON HOUSE'

October Events at Blackheath Halls

There's a full programme of Events going on at the Halls this month - too many to be included on this page so contact the Box Office: 020 8463 0100 (Mon-Fri 10am-5pm) for more details or look on their website.
Here's a taster:
Blackheath Goes Gospel 2021 Course
Mon 11th Oct 7.30pm | Great Hall
Enjoy the wonders and joy of being part of a gospel choir over this 10 session course which leads to a large scale performance in our Great Hall. Course Fee: £90

Old Royal Naval College

City & Country Farmers Market
Sunday 3rd October
Up Down and Beyond
Saturday 9th – Sunday 10th October
The Admiral's Tea
Sunday 17th October – December
Halloween Supper and Ghost Tour
Friday 29th – Saturday 30th October
Ghost Tour and cocktail evening
Sunday 31st October
Halloween Voyage into the Unknown
(Children's Event)
Friday 29th – Saturday 30th October

Tickets available online at www.ornc.org/booktickets

Mycenae House

An Exhibition of Photographs by the work of international Fleet Street photographer Ian Cook (and Mycenae House yoga class attendee). Ian, who lives at Hyde Vale, gives exhibitions of his impressive volume of work from time to time and right now locals are lucky enough to be able to enjoy wonderful photos at Mycenae House of everyone from Tina Turner, Peter O'Toole, Robert Mitchum and Bob Geldof to Germaine Greer, Emma Thompson, Leonard Cohen, Mick Jagger (see pic below), Edna Everidge and more. They take up the walls of two floors of Mycenae House. Limited editions of all the images are available to purchase.



Music at Mycenae

Saints and Sinners aka The Spikedrivers. After a thrilling performance at Mycenae House last year The Spikedrivers are back playing Friday 29th Oct. Tickets £16/14. For all Mycenae House activities /events info@mycenae-house.co.uk or www.mycenae-house.co.uk

Early Music Festival

The London International Early Music Festival returns to Blackheath in November after a two year gap. The world's largest early music fair features an exhibition of early musical instruments, concerts, talks and makers' demonstration recitals. Also included, "Performers Platforms", featuring a solo recorder competition.
Highlights include a series of concerts at St Michael and All Angels Church, and the exhibition in the Great Hall in Blackheath Halls.
The dates: 10th - 13th November. For more information and tickets visit LIFEM at www.lifem.org. Tickets for individual events are available, but a cover-all ticket costs £75.00, saving up to £30.00.

Royal Museums Greenwich Ice Rink

18th November - 9th January
We may still be in the final throes of summer but we wanted you to know that tickets for this year's Queen's House Ice Rink are now on sale.
Set against the spectacular backdrop of the Queen's House and the glittering lights of Canary Wharf, the Queen's House Ice Rink is a magical place to celebrate the festive period with friends and family.
Book now to secure your skating session on South London's only open-air rink.
Book now! At Tickets.RMG.co.uk

Creekside Discovery Centre

An area around Deptford Creek is being recorded - to compare species living now with what we know of the situation at the turn of the millennium. Come along on a walk to find out more.
Wilderhood dates:
Saturday 2 October 10.30 – 12.30
Meet at the Creekside Centre
Saturday 9 October 10.30 – 12.30
Meet outside Waitrose, New Capital Quay, Dowells Street, SE10 9DD
Saturday 16 October 10.30 – 12.30
Meet at New Cross Station entrance on Amersham Vale
STEM Club for 14 to 16 yr olds builds confidence and skills in an outdoor environment. This course takes place after school once a week, over three weeks. You'll need to commit to all three sessions and the price is just £10 for all three. Discount vouchers are available for those who may need assistance to attend - please email paddy@creeksidecentre.org.uk to enquire. For further info on either of the above please see <https://www.creekside-centre.org.uk/events/>

Horn Fair

After a year's absence, Charlton's autumn celebration Horn Fair will return to Charlton House & Gardens on Sunday 17th October. There will be an exhibition of pandemic photography from the community. Access will be open and free to the public from 11am to 4pm.
Plant Sale - Charlton and Blackheath Amateur Horticultural Society will have a plant stall at the Horn Fair 11am-4pm, Quality plants at good prices, many of them unusual, locally grown with helpful advice about cultivation.

Mycenae House
WELLBEING CAFE OPEN
Come and share your troubles and joys or just join in the chat!
Every Thursday 2-4pm
90 Mycenae Road SE3 7SE

Saturday 30th October 2021 at 7.30pm
St Margaret's Church, Lee, SE13 5DL

The Vanbrugh Ensemble

Mozart Overture to The Magic Flute
Dvorak Cello Concerto
Beethoven Symphony No 5

Conductor James Murray
Cello Hugh Mackay

Tickets £10 at the door, children free - interval bar

Greenwich Theatre

Arise: Legacy And Hope Concert 1st-2nd October
Join Pegasus Opera on a musical voyage as they celebrate Black History Month. Enjoy the rich sounds of opera and song as they journey through some operatic greats and explore music inspired by the Black Diaspora.
Into Battle 7th-31st October
The world premiere of a new play telling the true story of a bitter feud at Oxford University in the lead up to the first world war. "An extraordinary story that needs to be told, about people who must not be forgotten." Sir Tim Rice
The Queen Of Hearts
19th November-2nd January
Pantomime is back! Andrew Pollard, Anthony Spargo, 'Uncle' Steve Markwick and the team are back on stage at Greenwich Theatre for something very special.
Box Office 020 8858 7755
www.greenwichtheatre.org.uk

Language for Fun
Lovely, lively language lessons for adults

- Experienced & native teachers
- Small, friendly groups
- Conversation-based learning
- From beginners to advanced

Spanish, French & Italian • Booking NOW for September start

Call Lucy on 07812 081 360 • www.languageforfun.org • languageforfunwithlucy@gmail.com



Planning applications can be viewed in the library, or at the Woolwich Library on the lower ground floor of the Woolwich Centre, 35 Wellington St. They may also be viewed on www.greenwich.gov.uk/planning

On the ‘Spotter’s’ Special

The Angerstein Railway handles freight to Angerstein Wharf and is the only remaining railhead on the river.

John Julius Angerstein was a financier, the son of a Russian mother and a British banker father. From 1774 he owned Woodlands in Mycenae Road plus land between there and the river - including Combe Farmhouse, north of Westcombe

and steps up from Farndale Road were installed.

Today the path from Westcombe Park Station to the crossing is owned by Transport for London, the crossing itself by Network Rail. On the Charlton side the strip from Woolwich Road was owned by developers – but maybe now by the railway. The passage into Fairthorn Road



Pic: John Blackburn

Park Station. In 1851 his son financed this private railway running on an embankment and leased to the South Eastern Railway.

There is a crossing over the railway on the line of a footpath which ran from the farm to fields and chalk pits. A tunnel may once have gone under the line - some of it seems to remain. However in 1909 the Council asked the railway to provide a subway, which was refused. When the Blackwall Tunnel Approach was built in the 1960s the bridge over the motorway

belongs to the house owners adjacent.

Up until the 1970s the line was more heavily used. Branch lines went to the gas works, to the massive Charlton glass-works and other industries. Today the line carries about eight trains daily which have often made very circuitous journeys, frequently from Bardon Hill, Leicestershire. At the moment locomotives travel very slowly and drivers have a wide view. I am not aware that there has ever been an accident since 1909.

This little crossing is in a charming and isolated spot where you can imagine yourself at a 19th century countryside railway. And I can claim to have been on one of the few passenger trains on this line - on a Spotters’ Special.

-Mary Mills

Friends of Mycenae Gardens' AGM

There was good attendance at the AGM of the Friends of Mycenae Gardens on September 3rd. The many challenges facing the Gardens were outlined by the Chair, Mark Barnes, but these did not deter members from standing for election to the Committee. It will now be for the Committee to make plans to consider how best to preserve and improve the Gardens whilst at the same time reconciling the interests of the different user groups and

wider community.

How to reinstate the shrub beds and protect the trees for everyone’s enjoyment will no doubt be high on the Committee’s agenda. A meeting of user groups was proposed to garner suggestions and opinions. Volunteer helpers from the community will be needed at some point, and the *WN* will update readers of plans and activities.

- Ann Hill

The Heath Plays Host Again

September saw climate activists from Extinction Rebellion creating a tidy campsite by All Saints close to Blackheath Village. The site was hosted by local activists set up with a kitchen and solar power hub - and acted as a dormitory and base for the group to travel into London for a range of actions to try and raise

awareness around climate change. The

Heath has been the site of public protest for centuries - to mention a few - the

Peasants’ Revolt (1381), the

Cornish ‘poll tax’ rebels (1497), and

Women’s Suffrage Pilgrimage of 1913. Perhaps less well-known is the refugee

camp that was set up there for families escaping from the “Palatine” or war-affected states on the upper Rhine in 1709. The parallels with the situation of 21st Century

refugees is striking. They crossed the channel in small boats. Queen Anne had encouraged them to come to England with the intention of populating British colonies in America. On arrival in London, tents were provided and locals initially brought bread for the refugees - but initial sympathy was overridden by public hostility and



Palatine camp from The State of the Palatines, for Fifty Years Past to This Present Time (1709)

a political storm. The camp lasted from May to the winter 1709 - when many of the families were shipped to Ireland and others to New York- with promises of land for them to farm and make a living.

- Richard Sylvester

PLANNING APPLICATIONS

(See also <http://www.westcombesociety.org>)

113 MYCENAE ROAD ref 21/2864/F
To demolish existing house and replace with three 4-bedroom houses.

15 DINSDALE ROAD ref 21/3180/HD

To convert loft, install rear and side dormers, rooflights to front, alter doors and windows. lower the patio and replace front steps.

12 FENTONS, VANBRUGH PARK ROAD ref 21/3179/F

To replace Critall windows with uPVC windows to front and rear.

3B COLERAINE ROAD ref 21/3146/F

To replace ground floor windows at front.

6 GLENLUCE ROAD ref 21/3011/HD
To demolish garage and side extensions and construct single storey side extension with 4 rooflights.

111 MAZE HILL ref 21/2967/L

To affix Blue Plaque to front of house to commemorate Olaudah Equiano's residence (c. 1745-97).

TREE WORKS

54 HARDY ROAD ref 21/3396/TC

To crown reduce two sycamores by 20% in rear garden

66 LANGTON WAY ref 21/3317/TC

To fell Norway maple in front garden

INVESTMENTS

PENSIONS

ESTATE PLANNING

STARKEY

FINANCIAL PLANNING

Contact us: 020 8853 7160
admin@starkeyfp.co.uk

2 Charlton Road, Blackheath Standard, London SE3 7EX

Independent and friendly advice from south east
London’s top team of Chartered Financial Planners

Starkey Financial Planning Ltd is authorised and regulated by the Financial Conduct Authority



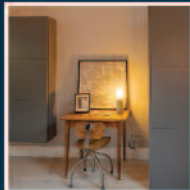
SENTINEL
— DESIGN AND BUILD —

SPECIALIST FOR EXTENSIONS, LOFT CONVERSIONS, REFURBISHMENT AND RESTORATION PROJECTS.

BUILDING HARMONIOUS HOMES FOR BOTH LIVING AND WORKING.

MUMTRUSTED ROYAL BOROUGH OF GREENWICH EXCLUSIVE BUILD PARTNER.

www.sentineldesignandbuild.co.uk



Tel: 0203 302 8005 / 07747 517930

contact@sentineldesignandbuild.co.uk

SPORTS & MENTAL HEALTH

Sport For All

Support the London Marathon Runners fundraising for South London Special League Tennis in Greenwich Park

Sport for all and connecting with our local community no matter what our ability is the South London Special League spirit. One that is fully embodied by our five intrepid marathon participants who will be running or walking 26.2 miles on Sunday 3rd October.

Olwen Davies is recovering from a foot operation and is using the Virtual Marathon as a rehabilitation opportunity. Olwen says: “Jogging has been a comfort throughout my adult life, improving my piece of mind and giving me goals and links to new friends. It’s never about the time. I’m a plodder and get huge benefits from what happens along the way like the views, new places and friends I see. I’m delighted to attempt the Virtual Marathon and fundraise for South London Special League accompanied by my dog, Freddie.”

Rachel Mai-Jones and Cath Farrant are both doing their first Marathon in their 60s, proving age is no barrier to new opportunities. Cath is fitting in marathon training alongside rowing and Rachel alongside hiking and rock-climbing.

Miren Davies is a sporty GP who was recently awarded the London Classics Medal. This exclusive medal is given to those who have completed the London Marathon, Prudential 100-mile Bike Ride and Serpentine Two Mile Swim.

Helen Marley-Hutchinson runs to keep body and soul together. Helen is a long-term supporter of South London Special League after discovering the charity via her neighbour, Sharon Brokenshire MBE,



League London Marathon Team
L-R -Miren Davies, Helen Marley-Hutchinson, Rachel Mai-Jones, Cath Farrant, Olwen Davies.

Founder and Director.

Olwen Davies, Cath Farrant and Rachel Mai-Jones will be joining 50,000 runners worldwide, doing 26.2 miles their way in the Virtual Marathon - and you can join them for some or all of the way.

The South London Special League Supporters’ van will be parked on Melish Industrial Estate, just off Warspite Road, Woolwich. It will be easy to spot - it will have South London Special League banners on it. Come over and say hello. Rachel, Cath, Olwen and Freddie the marathon border collie will pass the van at five miles and at 18.5 miles before com-



Exclusive route designed by Rachel Mai-Jones

pleting the marathon at 26.2 miles. **Donate now - every penny will go towards keeping the great work of South London Special League:** <https://uk.virginmoneygiving.com/Team/RunningforSouthLondonSpecialLeague1>

South London Special League Website <https://sls12013.wordpress.com>

continued from previous column....

classes. Their focus is to educate children and improve their mental health by participating in sport. Partnering with organisations such as Access Sport and the Marcus Rashford Foundation, they have also been able to facilitate SEND (Special Educational Needs and Disabilities) Active Sessions as well as fully-funded places on their popular holiday camps for families receiving free school meals.

Here are some sessions to get involved in:

Saturday 9.30 - 10.00 Toddler Football (2-5 years) at The Bridge
10.00-10.45 Football Club (5-7 years) in East Greenwich Pleasaunce
Multi-sport Holiday Camp (9.00am - 3.30pm) at The Bridge - primary aged children

To book visit: proinfinity.class4kids.co.uk or email info@proinfinitycoaching.co.uk
2.30-4.30pm SEND Active Play at The Bridge Monday 25th - Friday 29th October



SEND sessions at The Bridge in the Pleasaunce are low cost to attend and funded by community donations. The sessions alternate weekly between multisports activities and dance; the sessions are run by trained coaches. There is also time for free play and meeting other families.

The Bridge also run a new fun, friendly and supportive group for under 5s with SEND and their families. They run fortnightly From 23rd September. We welcome children pre or post diagnosis and can offer sensory and outdoor play and a variety of activities along with practical and emotional support and friendship. Email thebridges10@gmail.com

Sports Recycling

Did you know that the Knapp (the fluff) on tennis balls reduces after about six sets making the balls lighter and more difficult to control? The balls at Wimbledon are changed every seven games.

In amateur tennis the balls are used for longer but are still changed regularly and are recycled.

‘Recyclaball’ clean and repackage the balls for children’s charities, schools and nurseries. They are also used in retirement and nursing homes as physiotherapy balls and for police dogs, armed forces dogs, animal rescue centres and dog shelters.

My Tennis Club

I joined Blackheath Tennis Club in 1985 when I was looking for a place to live in London as I had just got my first full-time job as a Primary School teacher. I played a calming set before I even got a room to rent here! Lord that was a stressful couple of days. 37 years and many jobs later I am still there enjoying myself.

No matter what your standard of play you will find a place for yourself at this friendly club in Rectory Fields. It is part of the Blackheath Sportsclub, a charity that runs a subsidised bar and



Simon Blake and Pat Owens in vintage costume as Bjorn Borg and Suzanne Lenglen

event facilities for its members. There are 26 different teams, social nights and afternoons twice a week for mix-ins. Plus 11 box leagues for singles, groups for parents and kids and individual and group coaching.

Throughout the year it runs fun tournaments. Recent ones have included 1970’s Wooden Rackets, Think Pink Mac. Macmillan Cancer Fundraiser and a Spook Night for Halloween. This year the club plans a Christmas Party with a Mariachi Band and a New Year Fancy Dress competition. A £10 club supper also happens on the first Wednesday of winter months.

My tennis has morphed from stress busting to challenging team matches and now to more social tennis. You cannot beat getting in the ‘zone’ and timing those shots beautifully. Please look on our website for more details.

Tennis is also available locally in Greenwich Park, Ranger’s House, Hornfair Park and Blackheath High School. It’s great way to combine fun and exercise.

See you on court soon.

-Richard Lovegrove

Local Exercises Classes

Pilates by Beth - Thursday 9.30-10.30 at The Bridge in the Pleasaunce. Email pilatesbybeth1988@gmail.com for details.
Yoga with Kelly 6pm-7pm on Saturdays at The Bridge in the Pleasaunce. To book your place Insta@ kellymcg15 Email: kellymcg15@gmail.com

Children’s Exercise Classes/Outside Play

ProInfinity Coaching
ProInfinity provides engaging sports classes for children across Greenwich and London. These include after school clubs, weekend classes and holiday camps. Their sessions cover a variety of sports including football, tennis, cricket and multi-activity

EXERCISE • NUTRITION • MASSAGE

Personal Training At Home, Blackheath, The Pleasaunce & Fitstudioz Greenwich from just £40 per hour.

‘I really enjoyed my sessions with FitnessNyx. I saw vast improvements with my overall health and fitness.’ Laura A. H.

‘Great trainer who focuses on the individual needs of his clients - He has helped me regain my core strength after a back injury.’ Ken M.

Specialising in: Weight Management & Nutrition Coaching, Strength, Posture Correction, Sports Massage and Exercise for Older Adults.

Head to fitnessnyx.com for more information on training, prices, interviews and more!

Call:07538339611 Facebook & Instagram: @fitnessnyx



Learning is fun

St Olave’s is a Prep School in New Eltham for boys and girls aged 3-11 years

- Broad, child-centred curriculum
- Excellent results in the 11+ selection
- Clubs, outings and residential trips
- Excellent pastoral care
- Small classes
- Specialist staff for PE, IT, Music, French and Drama
- Sibling fee reduction
- Before and after school care

Tel: 020 8294 8930
www.stolaves.org.uk



MARKET PLACE

ACCOMMODATION/ROOMS FOR HIRE

FUNCTION ROOM FOR HIRE
Blackheath area, up to 150 people, Bar, disabled access. Tel 07940 296290

COUNSELLING

BLACKHEATH COUNSELLING SERVICE
(over 20 years experience)
For Anxiety – Depression - Relationship problems & Other Issues
1 full hour session £50 – Concessions available
Please contact Brenda T: 020 8858 5969 E: bmbt@btinternet.com Or Linda T: 020 8858 1991 E: linda@selondon.co.uk
W: blackheathcounselling.selondon.co.uk
No problem is too big or too small!

HOLIDAYS

STAYCATION WITH STUNNING SEA VIEW Three bedroomed Town house overlooking top 3 Blue flag beaches in quiet end of Whitley Bay. Brand new interior designed luxury house. 7 nights for August.
annettemdimambro@gmail.com
WHITSTABLEWEEKENDS/WEEKS
Sea wall house between Oyster Warehouse and harbour. Sleeps 5. Fantastic views.
Tel: 8858 6578 or 01304 367443

RECRUITMENT

**EARN AN EXTRA INCOME
EARN EXTRA CASH FOR CHRISTMAS**
- Work from home
- Hours to suit you
- Full training & support given
If you're honest, hardworking & positive, message me:
Sona - 07866152820

SERVICES & TRADE

MARK CHEESEMAN, LOCAL CARPENTER AND JOINER WITH OVER 30 YEARS EXPERIENCE.
All Aspects Of Carpentry and Construction Executed Considerately and to a High Standard. Both Traditional and Contemporary Design Joinery - Cupboards, Wardrobes, Floating Shelves Etc. Sash Window Overhaul. If you have Rotten Window Sills, Door Frames Etc. rather than replace them with the associated upheaval and expense, why not have a Timber/Resin Repair? Please Call Mark on 07767 456131 or H: 020 8854 4028.
LOCAL GUTTER CLEANERS. GUTTER CLEANING AND ROOF CLEANING SERVICE.
Mike 07791465052 www.local-guttercleaner.co.uk admin@local-guttercleaner.co.uk
TOM ELLIS BESPOKE CARPENTRY
Alcove bookcases, cabinets, wardrobes and window seats. M. 07510 869 947

JEWELLERY AND WATCH REPAIRS AND VALUATIONS
from Michele Franklin. British Jewellers Association accreditation 07809 502714
BLACKHEATH REPAIR & ALTERATIONS CLINIC Jackets re-lined, Trousers repaired and Dresses re-shaped etc. Over 25yrs Experience 07904 880448
T.TA ELECTRICS. NICEIC Approved Contractor, Quality Tradesman. All electrical work undertaken, Fully Insured & Guaranteed. 24HR EMERGENCY ELECTRICAL. Please call Tony on 07961 509 403 OR 020 8488 7425
OR info@ttaelectrics.co.uk
HOMEWORKS All-round handyman for those DIY's you have no time for! General repairs. Painting & Decorating. General Carpentry and flooring. Flat-pack assembly. Patio and deck cleaning. No job too small.
Contact Matthew Barron 07903 388658
ANGELO, ELECTRICIAN
No Job Too Small
T - 020 87616012/ M - 07850 767 283
Email - angelo@glennies.net
Part P Certificated
18th Edition & JIB Registered
WESTCOMBE CLEANERS
I'm a friendly, hard-working & organised domestic cleaner. Regular or single services. Competitive rates. Additional tasks. I love my clients to be happy.
Phone 07746 291617
TRAINED CHIMNEY SWEEP & STOVE INSTALLER
Fast, friendly Happy to work! Call Anthony on 07772 649577 or email: chimneymaintenance@gmail.com
LOCAL CARPET / OVEN CLEANER
Specialist in cleaning Carpets & Ovens, Upholstery & rugs. M: 07828 503132
http://www.carpetcrew.co.uk
ELECTRICIAN / ALARM ENGINEER
No job too small TMIET registered.
Call 07879 011792
INTERIOR DECORATOR & CARPENTER with over 20 years experience. A member of the guild of mastercraftsman. Free quotes & friendly advice on all your decorating requirements. Local references available.
Tel: Ashley Greaves 8858 2981

A & A LANDSCAPES
Landscape Specialists

Free advice & estimates


Qualified horticulturalist

All aspects of soft & hard landscaping work carried out including

- * Maintenance
- * Site clearance
- * Turfing
- * Tree surgery
- * Fencing
- * Patios
- * Brickwork

Tel. 020 8318 2530

LOCAL CARPET / OVEN CLEANER
Specialist in cleaning Carpets & Ovens, Upholstery & rugs. M: 07828 503132
http://www.carpetcrew.co.uk
A MAN AND A VAN
Tel: 020 8858 3889 Mobile: 07885 917842
PEST CONTROL SERVICES
Mice, Rats, Squirrels, Wasps, Foxes etc.
Local Service 07850 839 655

TUITION

MATHS & ENGLISH TUITION TO GCSE AND PREPARATION FOR 11+ AND INDEPENDENT SCHOOL SELECTION TESTS by qualified and experienced teacher.marystuition.com
Mary Bauckham 07709 089 838 marybauckham@gmail.com
HOME SUPPORT AND TRAINING FOR YOUR DIGITAL DEVICES Need some help with computers, phones and tablets? I'm a DBS checked IT trainer with 21 years experience, friendly and patient. £35/hour (£20 call out), discounted for block bookings. To discuss options, call Paul on 07958 251 448 or email paul.clayton@soulchip.co.uk
LOCAL PRIVATE TUITION
English & Math's Key stage 1 - GCSE'S PGCE Qualified & Experienced Tutor.
1-1 & Small groups (Online)
Call: 07904 880 448
GOLDSTAR LEARNING ACADEMY UK
Specialist in STEM Maths, ONLINE 1 to 1 and Group Tuition. Experienced PGCE Qualified Tutors 07495 434 234 @goldstarlearningacademy_uk
SPANISH TUITION
all ages and levels, GCSE, A levels , conversation, literature, by Latin-American native speaker. Also lessons online. Please contact Miguel at migansiergut52@gmail.com or 07910 318 513
PSYCHOLOGY TUITION
Finding it difficult to study at home during lockdown? Lost motivation for your studies? Academic coach with extensive teaching experience support. Call Helen on 07934 880 423
MATHS TUITION
Qualified and experienced secondary teacher offers tuition to GCSE level.
Call Miv Whitaker: 07745 816338; or email miv.whitaker@gmail.com

RUSSIAN TUITION (all levels), Translation and Legal Interpreting.
07766 531 401

BUY LOCAL AND GET A DISCOUNT! (When you show your Westcombe Society membership card).

BLACKHEATH VILLAGE PARES FOOTWEAR - bBlackheath
10% OFF all shoes over £20 excl sale stock.
GREENWICH BODYWORKZ - THE FITNESS CLINIC
109 Humber Road. 10% OFF all treatments costing £30 or more except Chiropody; exc. Saturdays.
ROYAL NEPALESE RESTAURANT
(Station Crescent) 20% OFF meals for two or more Sunday - Thursday.
CORIANDER RESTAURANT (Station Crescent) 25% off Sunday to Thursday. Bookings only!
COTON & HAMBLIN - OPTICIANS
£65 off complete spectacles
BLACKHEATH EYECARE OPTICIANS
Advanced Eye Examinations £95 or £45 with NHS concession. 25% off 2nd pair of spectacles with the same prescription. Not in conjunction with any other offer.
https://www.blackheatheyecare.co.uk/
TROJAN PRESS 10% OFF all quotations
WESTCOMBE DRY CLEANERS
10% discount on Dry Cleaning only. Cannot be used in conjunction with any other offers.
A * DRIVING SCHOOL £5 discount on the price of one x 2 hour lesson for WS members.
KAREN STOREY OF HOMESPACE offers members 10% discount on decluttering & homestaging : 07951 191086 www.homespace.biz



TROJAN PRESS

WE ARE NOW OPEN FOR PRINT

NOW TAKING ORDERS FOR BESPOKE CALENDARS FROM £6 EACH

**1a Lizban St
Blackheath, London SE3 8SS**

Tel: 020 8853 2268

**Email: info@trojanpress.co.uk
www.trojanpress.com**



Change their world for £2 a month...



...that's the cost of providing a school-age girl in Africa with sanitary pads for a month. Without such protection, girls often miss lessons and can lose over two month's education every year.

A small group of individuals provides sanitary protection in Kenya for up to 600 girls every month. We are now seeking to create a regular donation base of £400 a month (to achieve a maximum of £5,000 a year) to continue this work into the future.

Stamens is a 'small charity' [registered under HMRC for GiftAid] based in Greenwich - 100% of the donated money is to be spent on the Project, which has no administrative costs.

To find out more or to set up a £2 monthly donation, please visit www.stamens.org.uk

Do you have £2 a month to help?





**BLACKHEATH HIGH
EARLY YEARS
GDST**

Tomorrow, I'm going to the moon

Our tailored approach to education feeds every girl's imagination and ambition.

Where girls boldly go
blackheathhighschool.gdst.net

Book a tour