

Across two weekends in June a host of garden owners are opening their gates to the public to raise vital funds for Greenwich & Bexley Community Hospice. Come along to explore and discover the secrets of beautiful gardens in your local area. Tickets are available at our website and we do advise pre-booking but tickets will be available on the door at our participating gardens.

New gardens are being added all the time, so do check our website for the full listings! communityhospice.org.uk/open-gardens-festival

♥ **23 WESTGROVE LANE, SE10**

📅 26 / 27 JUNE 👤 Ian Pawlby

Hidden spaces down a green lane.

♥ **BALLAST QUAY, SE10 9PD**

📅 26 / 27 JUNE 👤 Diana Greenwood

This is a place for quiet relaxation and meditation in the presence of 2 powers of nature - the river and the plants. It is run by and for the neighbours of Ballast Quay. There are sculptures by blacksmith Brian Greaves and Kervil Herlihy who designed and made the goat memorial. Please note paths are uneven.

♥ **WESTCOMBE WOODLANDS, SE3 7RR**

📅 26 JUNE 👤 Friends of Westcombe Woodlands

4 acres of wild woodlands with paths to a central glade. Beehives, fruit trees, a pond and wild flowers. Simple child friendly activities during the day. Woodlands access from Seren Park Car Park alongside Maze Hill Station. Not suitable for wheelchair users.

♥ **PRIOR STREET, SE10**

📅 27 JUNE 👤 Prior Street Allotments

18 highly sought after allotments of different sizes devoted mostly to vegetables and fruit. Allotments holders will be on hand to answer your questions. Narrow paths means access is not suitable for wheelchairs.

♥ **41 GLOUCESTER CIRCUS, SE10 8L7**

📅 27 JUNE 👤 Clare & Mark Hatcher

A walled garden in a late Georgian terrace. The garden comprises a formal section with lawn and herbaceous borders and a beech hedge. Not suitable for wheelchairs as garden accessible through the house and down steps.

♥ **20 DARTMOUTH ROW, GREENWICH, SE10**

📅 26 / 27 JUNE 👤 Basia Burrough

A peaceful traditional walled garden full of roses and summer flowers. There will also be plants for sale. Not wheelchair accessible and there are fairly steep steps from the side door leading from the street into the garden.

ELTHAM, CHARLTON & LEE

♥ **19 ELTHAM PARK GARDENS, SE9 1AP**

📅 12 / 13 JUNE 👤 Peter Sowden

A relaxing garden, ideal for sinking into for a restful afternoon. Home to five fox cubs, who have been digging!

♥ **41 SOUTHBROOK ROAD, LEE, SE12 8LJ**

📅 12 / 13 JUNE 👤 Mr & Mrs Polanski

Developed over twenty years, this large garden has a formal layout with wide mixed herbaceous borders full of colour and interest, surrounded by mature trees, framing sunny lawns, a central box parterre and an Indian gazebo. Many sheltered places to sit and relax, including a small classical garden building with interior wall paintings.

♥ **29 RIEFIELD ROAD, ELTHAM SE9 2QD**

📅 12 JUNE 👤 Pat & Gerald Peters

Front and back garden with some mature shrubs and trees, newly established climbers, raised borders, lots of annuals and shrubs - a work in progress.

♥ **113 HEATHWOOD GDNS, CHARLTON, SE7 8ET**

📅 12 JUNE 👤 Martha Gowans

A country-style garden with a mix of flowers on the terrace and little lemon trees and a small fig tree - making the most of a south-facing wall. Interspersed in the flowers and shrubs are fruit, vegetable and herb plants.

♥ **118 ELTHAM HILL, SE9 5EF**

📅 13 JUNE 👤 Mike & Rosie Hill

This surprisingly large garden has been gradually developed over the years and contains a number of mixed borders with a variety of plants giving year round interest. There are also beehives.

♥ **THE GATEHOUSE, ELTHAM PALACE, SE9**

📅 26 / 27 JUNE 👤 Ruth Cornett & Matthew Barnes

A very special large walled garden in Eltham, bounding the gardens of Eltham Palace. Fine mature trees with established shrubs and large borders. Recently planted borders have a summer feel, complimented by a now established rose garden.

PLEASE TAKE ONE

OPEN GARDENS FESTIVAL 2021 12-13th 26-27th JUNE 2pm - 6pm

TICKETS

1 WEEKEND **£12*** / 2 WEEKENDS **£15***
SINGLE GARDEN **£3** / CHILDREN **FREE**
*entry to all gardens

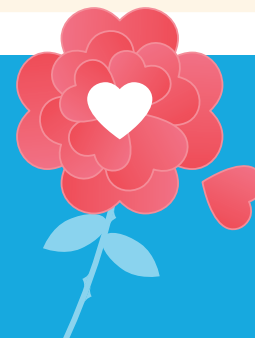
EXPLORE THE BEAUTIFUL GARDENS IN YOUR AREA & SUPPORT YOUR LOCAL HOSPICE

Kindly sponsored by



Greenwich & Bexley Community Hospice

📍 185 Bostall Hill, Abbey Wood, London SE2 0GB
📱 @gbchospice



Greenwich & Bexley Community Hospice

communityhospice.org.uk/open-gardens-festival

Registered Charity Number 1017406

OPEN GARDENS FESTIVAL 2021

12-13th 26-27th JUNE 2 to 6pm

🦽 Wheelchair access 🦽 Partial wheelchair access
🍷 Refreshments available 🛒 Plants/crafts for sale

GREENWICH

♥ HAMILTON HOUSE, 14 WEST GROVE, SE10 8QT

📅 12 / 13 / 26 / 27 JUNE 👤 Brian & Jane Sullivan ☕

The house gives on to a broad terrace from which pathways lead to groupings of plants and shrubs, providing colour and visual surprises. Several places to sit and enjoy your refreshments.

♥ 30 HYDE VALE, SE10 8QH

📅 12 / 13 / 26 / 27 JUNE 👤 The Mathesons ☕

The gardens of an 1830s tea caddy house with a lawn in front and behind, two shallow flower filled terraced beds backed by rose-covered arches, through which one sees a round lawn surrounded by a stone path and banks of shrubs, ivy and large trees.

♥ THE MANOR HOUSE, CROOMS HILL, SE10 8HG

📅 12 / 13 JUNE 👤 Jonathan & Teresa Sumption

This north facing garden is beautifully framed by a church spire and a huge sycamore and was laid out during the 1960s with a box parterre in the sunken garden, trellis garden to the side of the house with pleached limes and climbing roses. The current owners have rebuilt the Edwardian greenhouse.

♥ FLAT A, 30 CROOMS HILL, SE10 8ER

📅 13 JUNE 👤 Cherry Almond

Town garden on several levels. 12m x 25m with pond, wildlife areas, seating and a contemporary summer house. The garden is not wheelchair accessible and not suitable for young children.

♥ GLOUCESTER CIRCUS, SE10

📅 13 JUNE 👤 Gloucester Circus Gardens

An oval garden belonging to the residents of Gloucester Circus. The main features a fine collection of some 40 trees, some very old and some unusual and perimeter beds with shrubs and ground cover. There is a 6in step up into the garden.

BLACKHEATH

♥ 5 THE MEADWAY, SE3 OUP

📅 12 / 13 JUNE 👤 Steven & Mary-Clare Parker 🦽 ☕

The garden is surrounded by trees and has a somewhat 'hidden away' feel to it. It is set on three levels down the slope; an upper patio level with flower border; a small intermediate lawn with a broad herbaceous border against a sunny wall; and a lower lawn with a few fruit trees.

♥ BARTON COTTAGE, HEATH LANE, SE3

📅 12 / 13 JUNE 👤 Deirdre & Mike Ellis

The house is named after the Barton Cottage in Jane Austen's novel 'Sense and Sensibility' Unstructured and fairly wild, the garden features a wild flower meadow, a fish pond, a spectacular tree fern and a variety of trees and plants. You might even spot some sculptures!

♥ 9 THE ORCHARD, HARE & BILLET ROAD, SE3

📅 12 / 13 JUNE 👤 Sue Parks ☕

An artist's garden. With views over the Heath and trees, large shrubs, border planting, vegetables and small pond, this informal garden is still evolving. There are installations round the garden by the late artist, Ti Parks and an area for Sue's Raku firing of ceramics. The ground is uneven in places and there are steps.

♥ 111 MYCENAE ROAD, SE3

📅 13 JUNE 👤 Sue Hall

The garden was redesigned by Chelsea medal winners Del Buono Gazerwitz 11 years ago to create a simple family garden. As an east facing garden with lots of trees, it is a complex space to manage and the houses current gardener Gareth Forsyth of Mud Limited, works hard to create interest throughout the year.

♥ 49 LEE ROAD, SE3 9RT

📅 27 JUNE 👤 Jane Kingsnorth

A generous oasis of calm is tucked away behind Lee Road, benches are set beneath rambling roses overlooking sweeps of formal lawns with flowerbeds. Choose your path, through silver birches and maples, a scented rose garden, a prolific vegetable garden or a quiet reflecting pond, a bench always awaits.

♥ 54 BLACKHEATH PARK, SE3 98J

📅 26 JUNE 👤 Blake & Kathy Morrison 🦽 ☕

Extensive, rambling, south-facing garden created and tended by its owners. Divided into a series of rooms - a formal garden with pond and original sculptures, a pagoda with old roses and a wild area with orchard, another pond and vegetable patch.



♥ 105 BLACKHEATH PARK

📅 26 JUNE 👤 Robert & Lesley O'Rahilly 🦽

A vibrant green wall in the front garden. An emphasis on fruit trees, ferns and herbaceous planting throughout the garden. Wheelchair access at the front and side of the house will allow limited views of the garden.

♥ 28 MORDEN ROAD, SE3 0AA

📅 26 JUNE 👤 Roger & Susan Taylor 🦽 ☕

Formal front garden leads to spacious open back garden, surrounded by mature trees with colourful container planting on the terrace and two small lily ponds. Various sculptures can be found around the garden. Partial wheelchair access - allows you onto the terrace with a good view of the garden.

♥ 25 MORDEN ROAD SE3 0AA

📅 26 JUNE 👤 Kathy Piesold

The garden wraps around the whole house in a third of an acre plot. It has a number of herbaceous mixed borders with a strong emphasis on Mediterranean plants such as palms, bananas and cannas.

♥ 17 ELIOT VALE SE3 0UW

📅 26 JUNE 👤 Michael & Irene Maisey

A front and back garden space. Utilizing architectural salvage and sculptures to create outdoor living spaces.

♥ 14 OAKCROFT ROAD, SE13 7ED

📅 27 JUNE 👤 Sian & Paul Tribe ☕

Access to the garden is a narrow side entrance with steps between the houses. It has an interesting planting of different heights and textures. The garden is designed around a circular lawn which is partly surrounded by a pergola with a vine.