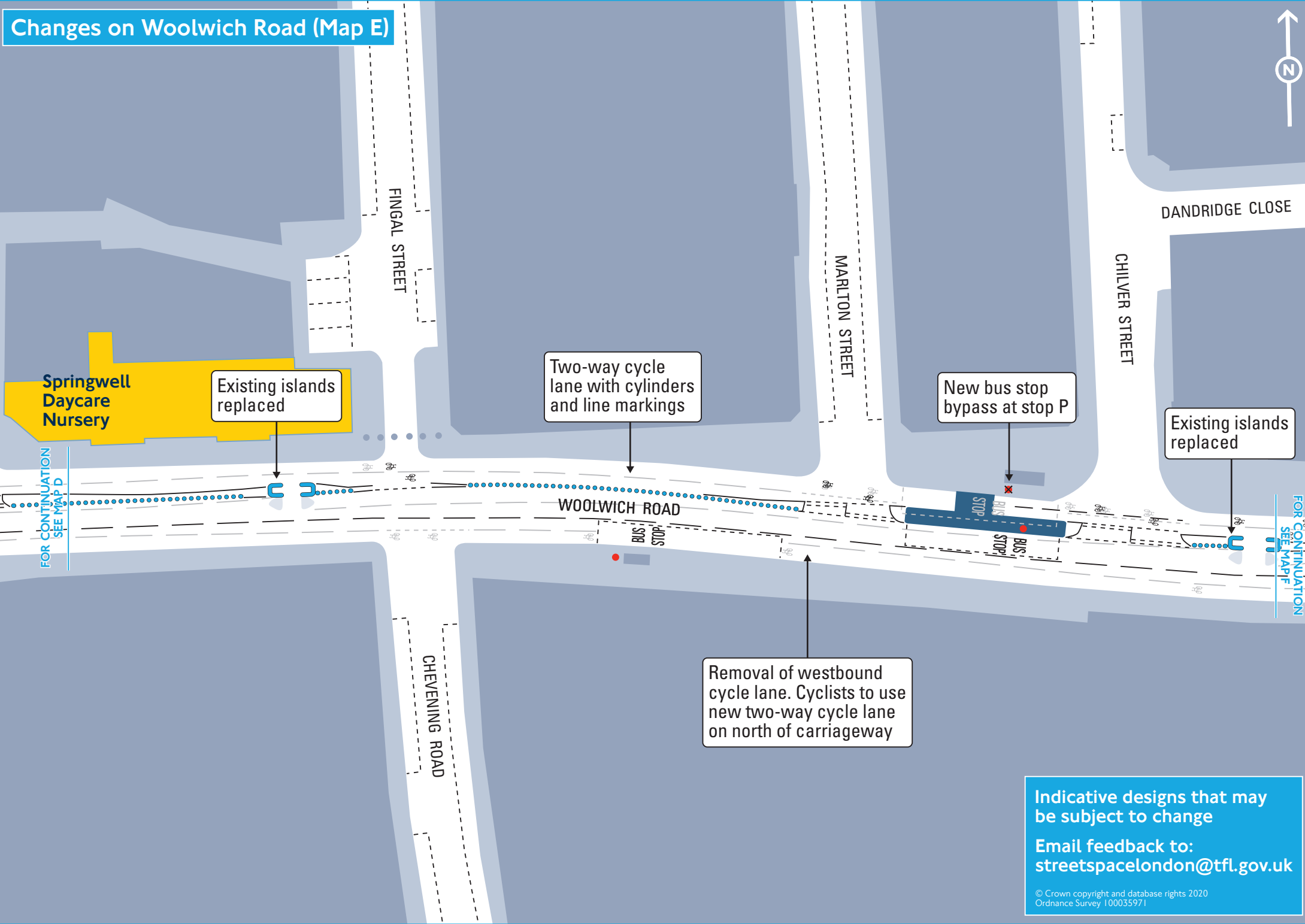


# Changes on Woolwich Road (Map E)



Springwell Daycare Nursery

Existing islands replaced

Two-way cycle lane with cylinders and line markings

New bus stop bypass at stop P

Existing islands replaced

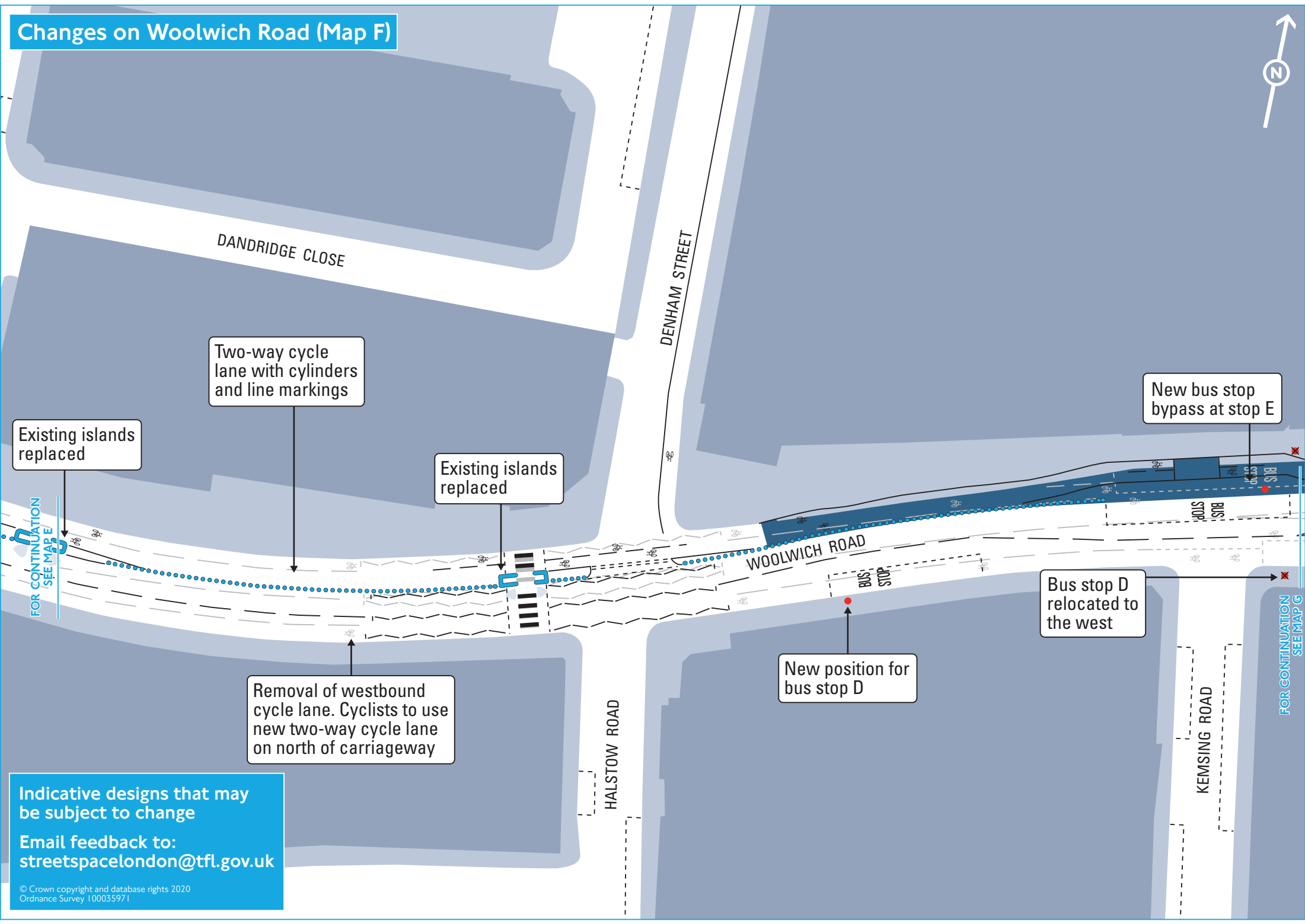
FOR CONTINUATION SEE MAP D

FOR CONTINUATION SEE MAP F

Removal of westbound cycle lane. Cyclists to use new two-way cycle lane on north of carriageway

Indicative designs that may be subject to change  
Email feedback to: [streetspacelondon@tfl.gov.uk](mailto:streetspacelondon@tfl.gov.uk)  
© Crown copyright and database rights 2020  
Ordnance Survey 100035971

# Changes on Woolwich Road (Map F)



Existing islands replaced

Two-way cycle lane with cylinders and line markings

Existing islands replaced

Removal of westbound cycle lane. Cyclists to use new two-way cycle lane on north of carriageway

New position for bus stop D

Bus stop D relocated to the west

New bus stop bypass at stop E

Indicative designs that may be subject to change  
Email feedback to: [streetspacelondon@tfl.gov.uk](mailto:streetspacelondon@tfl.gov.uk)

© Crown copyright and database rights 2020  
Ordnance Survey 100035971

FOR CONTINUATION SEE MAP E

FOR CONTINUATION SEE MAP G

# Changes on Woolwich Road (Map G)

No Entry onto A102 slip road (emergency access only). Access restricted with barriers



Cyclists to use existing toucan crossing to access a new shared space on the island

Island enlarged and guard rails removed to allow space for two-way cycle lane. This area will be shared with pedestrians

New toucan crossing

New shared space for cyclists and pedestrians provides an easier route through the Angerstein roundabout

New toucan crossing

Footway widened (guard rail removed)

FOR CONTINUATION SEE MAP F

Ichthus New Life Church

Angerstein Hotel

Removal of westbound cycle lane. Cyclists to use new two-way cycle lane on north of carriageway and central islands

Island enlarged and guard rails removed to allow space for two-way cycle lane and pedestrians

New toucan crossing

FOR CONTINUATION SEE MAP H

Indicative designs that may be subject to change  
Email feedback to: [streetspacelondon@tfl.gov.uk](mailto:streetspacelondon@tfl.gov.uk)



# Changes on Woolwich Road (Map H)



Footway widened  
(guard rail removed)

New toucan crossing

Two-way cycle lane with cylinders and line markings

Island enlarged and guard rails removed to allow space for two-way cycle lane and pedestrians

 Right turn from Woolwich Road to Aldeburgh Street banned

FOR CONTINUATION SEE MAP G

SCHEME EXTENTS FURTHER CHANGES WILL COME IN PHASE 2

Indicative designs that may be subject to change

Email feedback to:  
[streetspacelondon@tfl.gov.uk](mailto:streetspacelondon@tfl.gov.uk)