

# Changes on Trafalgar Road (Map A)



 No Entry into Christchurch Way (except cycles). Access restricted with barriers

 Except cycles

Removal of bus lane

Two-way cycle lane with cylinders and line markings

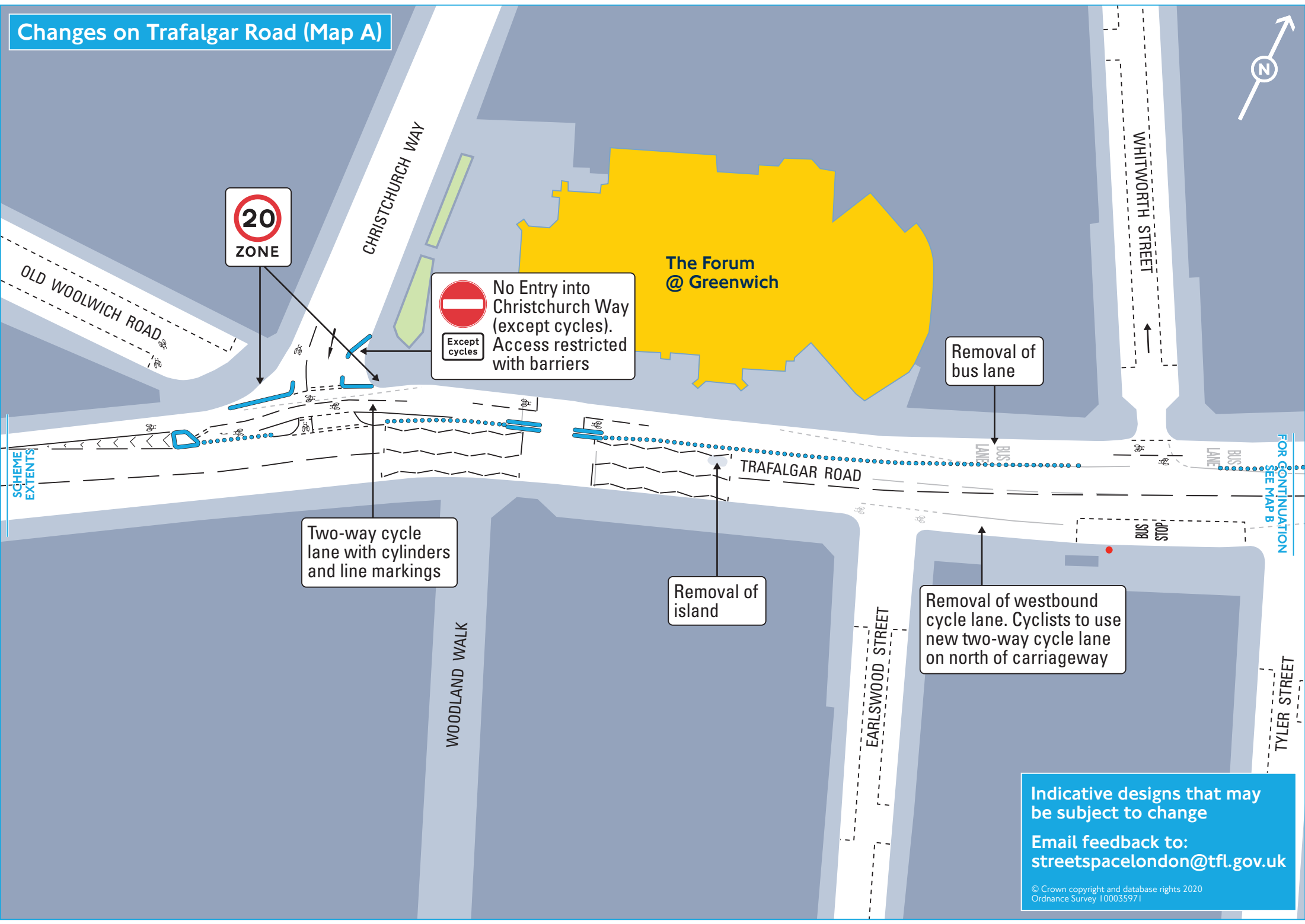
Removal of island

Removal of westbound cycle lane. Cyclists to use new two-way cycle lane on north of carriageway

Indicative designs that may be subject to change

Email feedback to: [streetspacelondon@tfl.gov.uk](mailto:streetspacelondon@tfl.gov.uk)

© Crown copyright and database rights 2020  
Ordnance Survey 100035971



# Changes on Trafalgar Road (Map B)



FOR CONTINUATION  
SEE MAP A

FOR CONTINUATION  
SEE MAP C

Removal of bus stop J



St. Joseph's RC Church

CONLEY STREET

PELTON ROAD

New bus lane on both sides of Blackwall Lane

BUS STOP  
BLACKWALL LANE

Greenwich Town Social Club

Eastbound and westbound traffic lanes on the approach to the A206/Blackwall Lane junction reduced to one

Two-way cycle lane with cylinders and line markings



Footway widened (guard rail removed)

TRAFALGAR ROAD

Existing island replaced

Removal of westbound cycle lane. Cyclists to use new two-way cycle lane on north of carriageway

Rodmere Street two-way from Trafalgar Road to 65m south



Iceland

COLOMB STREET

RODMERE STREET

VANBRUGH HILL  
BUS STOP

Greenwich Centre

Indicative designs that may be subject to change  
Email feedback to:  
streetspacelondon@tfl.gov.uk

# Changes on Woolwich Road (Map C)



Greenwich Town Social Club

Two-way cycle lane with cylinders and line markings

HATCLIFFE STREET

Temporary ramp to access footway from relocated loading / parking bays

Bus stop D relocated to the east

Loading / parking bay relocated

Parking bay relocated to Armitage Road

New bus stop bypass at stop D

Existing islands replaced

WOOLWICH ROAD

COMMERELL PLACE

ARMITAGE ROAD

FOR CONTINUATION SEE MAP B

FOR CONTINUATION SEE MAP D

Westbound carriageway reduced to one lane

Removal of westbound cycle lane. Cyclists to use new two-way cycle lane on north of carriageway

Start of bus lane relocated west

Existing loading bay retained

HAZEL LANE

Indicative designs that may be subject to change  
Email feedback to: [streetspacelondon@tfl.gov.uk](mailto:streetspacelondon@tfl.gov.uk)

Greenwich Centre

# Changes on Woolwich Road (Map D)



Existing islands replaced

Two-way cycle lane with cylinders and line markings

Springwell Daycare Nursery

FOR CONTINUATION SEE MAP C

FOR CONTINUATION SEE MAP E

Removal of westbound cycle lane. Cyclists to use new two-way cycle lane on north of carriageway

Removal of bus stop

CALVERT ROAD

ANNANDALE ROAD

WOOLWICH ROAD

DENFORD STREET

Indicative designs that may be subject to change  
Email feedback to: [streetspacelondon@tfl.gov.uk](mailto:streetspacelondon@tfl.gov.uk)  
© Crown copyright and database rights 2020  
Ordnance Survey 100035971