



100th Birthday

# Westcombe NEWS



Free to 3800 homes, in libraries and some shops

September 2018 No. 7

Applications from Crafts people for the Westcombe Society Craft Fair can still be made by emailing [info@westcombesociety.org](mailto:info@westcombesociety.org)

## Save our School!

The campaign continues

WN reporter

The John Roan campaign of parents, staff and the wider community to save their school from forced academisation has secured a major success in preventing the school from opening as an academy in September 2018.

“We are really pleased that our school will be opening as a community school in September,” reports one of the parent campaigners, Anni Harrison, whose son will be joining Y11 in the new term.

“We were shocked to find out in June that our school had been judged as “inadequate.” The Ofsted report was clearly politically motivated and described a school we didn’t recognise.”

### The Ofsted report

The Ofsted report published in June has been challenged by staff and parents at the school. Under current legislation (The Education and Adoption Act, 2016), when a school is judged as inadequate, the Secretary of State for Education, Damian Hinds, is empowered to force a school to be taken over by a Multi Academy Trust (MAT). Parents, staff and the Governing Body are not even legally entitled to any consultation about the process.

The order was issued on 12 June and Dominic Herrington, the Regional Schools Commissioner whose role is to choose the sponsor, named the University Schools Trust (UST) as the MAT to take over the school on 13 June. However it can take many months of legal processes before the land and assets are controlled by the MAT.

“The current legislation is incredibly undemocratic and gives the power of unelected civil servants to hand over our community schools to businesses who frankly don’t put our children first,” explained Anni. “We have no faith in the UST to run our school. They have been operating less than two years and are currently running a deficit to the tune of £700,000. Our school is 341 years old and has the support of a Local Authority who is accountable to its local community. So, who would you rather be with?”

Questions have already been raised about why the UST was named as the preferred sponsor. There are concerns about a potential conflict of interests when the school was inspected in March 2018. The Chair of Governors, Christine Whatford (who has since resigned after the Ofsted



PHOTOS: Neville Grant

inspection) was a consultant of the UST. The UST were brought into the school in September 2017 by the Governing Body to support the school and Cath Smith was asked to act as an Executive Head as a consultant of UST. After Catharine Wensley resigned in December 2107, Cath Smith was appointed the Head of the school in February 2018.

Jason Holdway, a parent, says: “It all seems a bit fishy that the UST come into our school, we fail the Ofsted inspection seven months later and then, hey presto, they get named as the preferred sponsor to take over our school assets worth millions. I’ve read their Companies House report which states that they are a ‘going concern’, but need to expand. It looks to me that they had a lot to gain from our school not doing well in the Ofsted inspection.”

### Criticism of academisation

The academy programme has come under fierce criticism in recent years. The Local Government Association (LGA) which represents councils in England has provided compelling evidence that councils support schools more effectively than Multi Academy Trusts (MATs). The report which looked at 429 schools rated as inadequate in 2013 found that 115 (75%) that stayed with the council became good or outstanding, compared to only 59% who had been inspected since becoming academies. Reports of excessive pay for academy CEOs, the use of off-rolling (when pupils are removed from academies to improve results) the exclusion of children with SEND (Special Educational Needs and Disabilities) and the use of non-qualified

staff fill the press on a weekly basis and have undermined the credibility of this policy amongst both parents, and teachers.

Kirstie Paton, NEU rep and a teacher at the school, explains why NEU (National Education Union) members at the John Roan have been on strike.

“Academisation is a broken system. Our schools are in crisis. We have serious concerns about how academisation is leading to greater inequality in schools. In “the market of education”, many children lose out and that is not something we can allow without challenge. The John Roan has a proud tradition of educating all children and we celebrate its caring, community ethos. MATs do away with this in pursuit of exam results and a position in the league tables. We are also concerned that academisation worsens conditions for staff. High staff turnover unsettles children and they lose out yet again.”

### Where next?

The NEU and GMB unions have asked representatives from the Governing Body, and the Council for their support in their legal challenge to Ofsted. Parents and staff have submitted formal complaints about the objectivity and bias and the conduct of the lead inspector Joan McVittie.

However, it seems schools judged ‘inadequate’ are not allowed to complain. Ofsted argue their internal moderation process is rigorous and therefore there is no right of appeal. However in the Durand case (July 2017) a school took Ofsted to court, and the judge ruled in favour of the school. Parents and the unions are now determined to take legal action against Ofsted to overturn the report: the academy order would then have no legal standing –



and the school would not be academised.

“We want our Labour Council to do everything in its power to stop the handing over of our beloved school to the UST or any other academy,” says Anni Harrison. “They are all the same – predatory businesses who take a cut of public funds for themselves and ultimately don’t care about our kids, especially if they aren’t the sort to do well in exams. We want the Governing Body, our Headteacher and the LA to support the legal challenge which could stop the academisation in its tracks.”

Questions have also been raised about the way in which the John Roan Foundation have acted throughout this process. They own the land and buildings at Maze Hill along with the playing fields and other properties in West Greenwich. Parents and staff were informed that in April they invited the CEO of UST, Graham Price, to discuss transferring the assets of the Trust to the UST. This has already caused controversy: the LA Trustee John Fahy, who expressed concerns about whether due diligence has been carried out in respect to the UST, has been removed.

Parents Anni and Jason are optimistic: “Our campaigning has secured us some time to continue our fight. If they’d got their way, there would be a UST sign outside our gates in September. We’ve stopped that through our campaign. We will pursue the legal challenge, but we also need to get everyone in our community campaigning to save our school. We have 341 years of history and we are not for sale!”

### What you can do:

- \* **Come to the Next Campaign meeting: Parents for John Roan will be meeting on Tuesday 4 September at 6pm at Mycenae House. All are welcome.**
- \* **Take part in the John Roan community day on Saturday 22 September. If you would like to get involved then please contact [parentsforjohnroan@gmail.com](mailto:parentsforjohnroan@gmail.com).**
- \* **Follow us on Twitter @JohnRoanResists and FB JohnRoanResists.**
- \* **Write a letter explaining your opposition to the forced academisation of the John Roan and requesting that the local MP Matthew Pennycook, local Cllrs and the Cabinet member for Schools, David Gardner, support the legal challenge to Ofsted. [matthew.pennycook.mp@parliament.uk](mailto:matthew.pennycook.mp@parliament.uk) [marian.lolavar@royalgreenwich.gov.uk](mailto:marian.lolavar@royalgreenwich.gov.uk) [leo.fletcher@royalgreenwich.gov.uk](mailto:leo.fletcher@royalgreenwich.gov.uk) [geoffrey.brightly@royalgreenwich.gov.uk](mailto:geoffrey.brightly@royalgreenwich.gov.uk)**



## Newsbriefs



### Upset at the Vanbrugh

Plans to build a house behind The Vanbrugh pub and on part of its beer garden, have been rejected by councillors after opposition from neighbours and the local MP.

Greenwich planning officers had recommended approval of the plans, but councillors have rejected the scheme, calling it an “incongruous development” because of the adjacent beer garden.

### Congratulations

- \* to the RAF on its 100th birthday.
- \* to Mycenae House on yet another terrific Parkfest day in July.

### Heath fire

In August, a barbecue on the heath caused a fire: the foolish perpetrators ran off. The fire brigade was quickly on the scene to extinguish the fire.

### Build that wall!

Residents of Siebert Road and Westcombe Hill are anxious to start talking to RBG and TfL now that the Noise/pollution Barriers have been agreed (subject to the building of the Silvertown Tunnel). They would like a “living wall” to be considered as an option..

### One shot too many - route change from Chariot.

Residents of Westcombe Hill

already have up to 30 TfL buses an hour on Westcombe Hill together with a dozen or so Commuter Coaches during the rush hour, plus HGVs.

Residents are vehemently opposed to the further 10+ vehicles an hour Chariot would add. Their application also involves other routes within Westcombe Park. Please read and respond to the consultation at <https://consultations.tfl.gov.uk/lsp/929735fe/>

### David Alexander

We are very sorry to report the death in July of David Alexander who was featured in the *WN* in June 2015. Our condolences to Gina and the family.



Organised in aid of Macmillan Cancer Support, registered charity in England and Wales (261017), Scotland (SC039907) and the Isle of Man (604). Also operating in Northern Ireland.

Dear Members and Neighbours in Westcombe Park .....

Do Come: 28th September 10.00-14.00  
The Westcombe Society at Mycenae House Community Centre. Cakes, Sandwiches, Raffle.

Enquiries and offers of help please ring  
Caroline Owens 0208 853 0948.

WORLD'S BIGGEST  
COFFEE  
MORNING  
MACMILLAN  
CANCER SUPPORT



## WESTCOMBE NEWS

### ALL EDITORIAL CORRESPONDENCE TO:

**Neville Grant**, Editor  
wnews@westcombesociety.org  
Tel. 020 8858 8489

### ALL MATERIAL TO BE SENT TO: wnews@westcombesociety.org

**Deadline for the October issue:** 16th September  
**Environment Editor:** Maggie Gravelle

**Sub-editor:** Annie Grey  
**Reporters:** The community – that means you!

**ENVIRONMENT COMMITTEE**  
**Emily Norton** All queries and comments to: 020 8853 2756  
environment@westcombesociety.org

**DISTRIBUTION** Emily Norton and volunteers.

*Volunteer distributors please phone 020 8853 2756, we need your help!*

**ADVERTISING MANAGER**  
**Marilyn Little, 163 Westcombe Hill, SE3 7DP 020 8853 1312**  
Advertising@westcombesociety.org

All adverts payable in advance by cheque to **The Westcombe Society**.  
**DISPLAY:** Single column 6cm x 6cm:  
One - four issues £35, five-plus issues £30 each. Other sizes: please inquire.  
**Classified Ads** (Market Place) 30p per word (A telephone number = one word. An email/web address = 3 words.) Deadline for all adverts is 10th day of the preceding month.  
**Printed by:** Trojan Press

**Contact the Westcombe Society:**  
WestcombeNews@egroups.com  
**Publisher:** The Westcombe Society  
**Chairman:** Marilyn Little Tel. 020 8853 1312

*The views expressed in the Westcombe News are not necessarily those of the Westcombe Society or of the Editor. We take all reasonable precautions to protect the interests of our readers by ensuring as far as possible the bona fides of our advertisers but cannot accept any responsibility for them. Any complaints should be addressed to the advertiser.*

*To access back-numbers (in colour) go to:  
www.westcombesociety.org/westcombe-news/  
Westcombe Society's Blog:  
http://westcombe.blogspot.com*

**WANTED! More volunteers to distribute the *WN* – and to help with Westcombe Society's community events. Please phone 8853 2756 if you would like to help.**

### WESTCOMBE SOCIETY MEMBERSHIP

**Please send this membership form to:**  
**Christine Legg, 69 Mycenae Road, London, SE3 7SE**

Name.....

Address.....

.....

Tel.....

Email: .....

*Please enclose payment as appropriate:*

|                         |     |     |
|-------------------------|-----|-----|
| Family Membership       | £12 | [ ] |
| Individual Membership   | £8  | [ ] |
| Senior Citizens/unwaged | £4  | [ ] |

## St Alfege's: 300 years of service

St Alfege Church will be celebrating the rededication of the church in Sept. 1718 with a series of special events.

On Sunday 23 September we will be celebrating the rededication with Sung Eucharist at 10.00am followed by a bring and share lunch, and a community poetry event at 1.30pm in the church entitled The Spirit of Place.

On Wednesday 26 September 7.30pm, The Revd Canon Chris Moody, vicar of St Alfege's, will give a talk about Francis Atterbury, the controversial Bishop of Rochester who rededicated the church in September 1718.

On Sunday 30 September at 7.30pm there will be a performance of Esther (1718) by Handel. See page 5,

### THE WESTCOMBE SOCIETY NEEDS YOU

The Westcombe Society are planning another Christmas Fair on Sat. Nov. 17th. Those involved have been helping out at this community event in support of the society's Charity of the Year for a number of years and we are very much in need of new blood with new ideas. We also need help in setting up on the evening before and taking down once the event is over. This requires a strong team of willing helpers for a couple of hours on the Friday evening and similarly on the Saturday.

If you would like to be involved, or can help in any way please call Marilyn Little on 0208 853 1312



## Letters

Views expressed are not necessarily those of either the Westcombe Society, or the *Westcombe News*.

**From: G Bailey Westcombe Park Road**

I was pleased to see the article on children's gambling in June's issue of the *WN*, and the responsibility of parents in facing the problem.

It has recently come to my attention that many children even at Primary Shool are being sucked into a pernicious game called Fortnite. Fortnite is "a co-op sandbox survival game" developed by Epic Games and People Can Fly and published by Epic Games.

What seems to be happening is that the craze spreads like wildfire, and whole classes end up playing it. They start off with freebies - and later on, have to start paying. Players have to choose a character, whose aim in life is to kill other characters: it is therefore intensely violent. Children can become obsessed with it to an unimaginable degree. So parents/teachers: watch out: if you don't take control, who will?

**From: Trevor Allman Coleraine Road**

With regards to your headline "Who are calling the shots?" (*WN* - July/August), given the Labour Party in the London Borough of Greenwich is euphemistically known as "The Berkeley Homes Party", I think we know the answer to the question posed.

Given the former Labour leader of Greenwich Council, Chris Roberts, under whose tenure the over-development of parts of the borough began, is now a consultant to developers, the euphemism is not without reason.

It is also not without irony that Nick Raynsford, our former MP, should state that the planning system is "not fit for purpose". Given how often he lined up with developers to combat protests from the residents he was supposedly elected to serve, he certainly should know.

Wouldn't it be a novel concept if those elected to serve the interests of residents of the London Borough of Greenwich actually did so?

The Official Monster Raving Loony Party condemns the Labour Party on Greenwich Council for the pitifully low amount of much-needed social housing (8.3%) among all the new developments in the borough. This seems to be in keeping with the social-cleansing policies employed by Labour, as well as Conservative-run councils, to purge the poorest and most vulnerable people from areas that they want for gentrification.

**From: Victoria Rance Lizban Street**

One Sunday in July, a beautiful area of wild grassland on Blackheath was mown despite the fact that it was brimming with wildlife. .

That area of the Heath, just west of St John's Park, is usually left, and I walk through it

## The Macmillan Charity Walk

The Westcombe Society Walk in aid of The MacMillan Cancer Support is on Sunday 14th October. Starting at Vanbrugh Castle at the end of Westcombe Park Road, we enter Greenwich Park and on to the Greenwich Foot Tunnel.

From there, it's off to the north bank of the Thames to follow the National Trail, marked with the Thames barge symbol, on a walk from Island Gardens to the mouth of the River Lee. The distance from Island Gardens to the River Lee is about 4.5km. Some may wish to leave the walk at this point to return home via the East India DLR or Canning Town underground.

Otherwise, we continue on to the Excel Exhibition Centre and Royal Victoria Dock and take the cable car back to North Greenwich and the O2 for a BYO picnic.

After lunch, walkers can walk on, along the Thames Path to Greenwich Yacht Club and back to Westcombe Park station where the walk will end. Or you can catch a bus from the O2 back to Westcombe Park.

A £10 Registration Fee is required, to be paid in advance. Walkers will be given a map and water at the start of the walk.

*To register to join the walk please email Patricia at psladebaker@btinternet.com. Alternatively, please call Joanne on 07709 571777.*

*In addition to the registration fee, you may want to ask family and friends to sponsor you. All the monies raised will be donated to Macmillan Cancer Support.*

## Sad Farewell to Wide Horizons

Wide Horizons Environment Centre in Eltham, which was profiled in June's *WN*, closed down at the end of July, with a loss of 75 jobs.

Wide Horizons helped to reduce obesity in children, and develop a healthy interest in outdoor activities. It catered for around 45,000 children a year.

It was helped into being as far back as 2004, by both Lewisham and Greenwich Councils, and received a cash injection of £1.4 million earlier this year.

However, it had financial difficulties, and the new director applied for a further £400,000. This was turned down by the Council amid claims that the charity's business plan showed that it would need yet more funding by the end of this year,

In a statement, Leader of the Council Cllr Danny Thorpe said: "As a teacher I fully appreciate the value of outdoor education. But it was not in the taxpayers' best interests to provide any further financial assistance. . . .

*Parents and children have been full of praise for the work of the charity.*



This incident in Halstow Road highlights the risk from heavy traffic accessing our narrow streets. PHOTO: John Murphy

of children in England walking to school. 51 per cent of primary school children aged 5-10 walk to school, down from 53 per cent the previous year.

**From: Malcolm Hardy St Johns Park**

The traffic situation on Trafalgar Road goes from bad to worse, especially if one is going down from Blackheath. The lights at the bottom of Maze Hill are regulated very much in favour of the traffic on Trafalgar Road.

The intersection of Trafalgar Road and Vanbrugh Hill/Blackwall Lane is frequently blocked by cars and even buses moving into the yellow grid without being able to move out of it. Cameras and fines could remedy this and raise some income for the borough! The situation is made even worse by an ill-placed pedestrian crossing a few yards west of the junction.

We have now noticed that someone has decided that one way of improving the traffic flow, at the inconvenience of pedestrians/bus users, is to suspend the use of the request stops on Trafalgar Road (and also on Shooters Hill Road). **Ed:** And IKEA hasn't even opened yet

**From: John Roan parents:**

I have a daughter at John Roan and I'm totally opposed to the forced academisation order. My daughter is happy at school and progressing well. The teaching is good and the staff are dedicated. **Stephanie Wilson-Black** I am a parent to two children, one in Yr11, and a new one in September in Yr7. I put my children into John Roan School because it was an all-inclusive community school with friendly and supportive staff. As my son has profound SEND needs I was confident that John Roan could meet his needs.

I am very worried for the future: we love the John Roan and don't want it to be an academy especially when academies don't like children with SEND needs. I don't want my child to be excluded. I chose an all-inclusive school, and as a parent I will support whatever is needed to maintain the John Roan as a community comprehensive school. **Jenny Huggett** My son has had a decent experience there to date, and my husband and I (he's a lawyer, and I'm a senior teacher) are vehemently opposed to academisation. My son has had excellent music, drama and sporting opportunities and some very good teachers. The main problem has definitely been very poor choices of headteachers - five in three years - and their reluctance to recruit decent staff, hence reliance on agency supply which has been dire. It's no reason to academise though.

regularly. It had colonies of skipper butterflies, marble whites, and masses of other insects and beetles:, a piece of wildlife like this takes years to establish, and now is dust.

This photo shows what happened:



PHOTO: Jo Beale

Was it council staff who did this? I have been told three men were mowing. It was a Sunday, so I wondered if it was not council staff. Also I know local wildlife experts have worked hard to protect wild spaces, so it was a real shock to see it. Is there anyone on the council with a remit for protecting wildlife? Who should I report this to? Or was it done with expertise and a proper consideration for wildlife?

We have such a crisis with decimation of habitats and loss of species in Europe and particularly the UK. We do need to take care of the green spaces we have guardianship of.

**From: Emily Norton Coleraine Road**

In the July-August issue there was a statement that the Council "had removed the last barrier on the path from Thamesmead to Greenwich."

This should have said that it was the last barrier between Thamesmead and Greenwich Peninsula. According to people Mike Norton asked at Enderby Wharf, that section of the footpath won't open until later this year.

**From: Joe Irvin Living Streets E1 7SA**

Shocking obesity figures confirm the need for government and schools to encourage more active lifestyles. The number of children leaving primary school severely obese has hit record levels with one in 25 pupils aged 10 and 11 in the most obese category.

Childhood obesity is one of the biggest health threats facing the UK and it's getting worse. It's not just about eating better but about keeping active - and swapping the school run for a school walk is an excellent way to start.

All schools should be using their recently doubled PE and Sport Premium budget – funded by the 'sugar tax' – on active travel initiatives which help enable and encourage more families to walk to school, thus reducing inactivity, congestion and air pollution.

The results of the annual National Travel Survey (2018)) show a decrease in the number



# LOCAL NEWS

## Council to fund local community projects

A new funding pot of £510,000 which bring projects proposed by local residents to life in the Royal Borough's Wards has been agreed by the council. Each of the borough's 17 Wards will receive £30,000 to cover a range of community initiatives, between now and 2022.

In the last round of Ward funding, 139 community projects received funding, ranging from community and social schemes, environmental issues and well-being and health.

Under a similar scheme the winners in Area 2 (our area) included:

- \* The Bridge East Greenwich community group for new outdoor play equipment and bench refurbishment at The Bridge
- \* St Alfege Church in Greenwich West for a new access ramp;
- \* The Peninsula Koinonia Federation for the Christchurch School's community garden;
- \* The Land Restoration Trust and the Conservation Volunteers for their Getting Close to Nature at Greenwich project;
- \* Montessori Education for Autism for equipment upgrades at the Blackheath/Westcombe Autism support project;
- \* the Vanbrugh Community Association for support for the Reach Out 'Digital Inclusion' Project at Mycenae House.

Cllr Christine Grice, Cabinet Member for Finance and Resources, said:

"We want residents and community groups to put forward ideas to their local Ward councillor, so that they can champion

all these fantastic ideas that residents have. Having such in-depth knowledge of their local area, Ward councillors can help bring together like-minded people to help put forward even bigger and better ideas for local projects."

The Ward Budget scheme provides a mechanism so that local Ward Councillors can respond directly to the local needs and priorities of the communities they represent. Ward Budget funding should support initiatives that:

- \* promote the well-being of the community and which are developed in response to local priorities and/or to meet a need identified from within the Ward;
- \* look to provide additional funding where community groups are already making efforts to raise funds to support the initiative/project;
- \* are developed and monitored by local Councillors, making use of their knowledge of local needs and priorities;
- \* have consensus across a Ward or between Wards; and
- \* enhance the Council's community leadership role and promote civic pride

*To discuss your project ideas, please contact your local Ward councillor – to find their contact details, check out the latest edition of Greenwich Information, or go to [www.royalgreenwich.gov.uk/councillors](http://www.royalgreenwich.gov.uk/councillors) For information about the scheme, please email [ward-budgets@royalgreenwich.gov.uk](mailto:ward-budgets@royalgreenwich.gov.uk)*

## Chance to try an E-Car

The Council has teamed up with the borough's regular car club provider, Enterprise Car Club, to trial an e-car scheme in the Low Emission Neighbourhood (LEN) of Greenwich and the Peninsula.

Two electric cars, Nissan Leafs, are now available to residents and local businesses from fixed charging bays, in Roan Street and Park Row car park. A further five electric vehicles will soon become available.

Cllr Denise Scott McDonald said: "We are delighted that Greenwich is leading the way in this field. Electric cars are a great way of getting around, and, if any driver is thinking about trading in their vehicles for an electric car, this scheme is the perfect way of seeing if an electric vehicle will work for you."

Any Enterprise Car Club member will be able to use the electric cars. Available 24/7, 365 days a year, they cost as little as £6.20 per hour, which includes VAT and insurance, and five pence per mile including recharges.

Nissan Leafs have a battery life of more than 90 miles and can be charged at any Source London charging site. There are currently more than 850 charge points around London and 2,000 more are planned.

Dan Gursel, MD of Enterprise Car Club, said: "We see this electric vehicle as part of how Enterprise is assisting local authorities in achieving their targets. This as an important step towards our goal of achieving a

50% Ultra Low Emission Vehicle fleet in London by 2025."

The Low Emission Neighbourhood (LEN) is an innovative scheme set up by Royal Greenwich and part funded by the GLA.

It is focused on improving air quality in the Greenwich West and Peninsula wards using a mixture of 'smart technology' and tried-and- tested techniques to reduce transport emissions and make the area more people-friendly.

The electric car club in the LEN is a two-year pilot. If successful it will be rolled out across the borough. This latest initiative is also good news for electric car owners in the borough. Beside the new car club charging bays, more separate new electric charging bays are also coming to the LEN area.

Enterprise Car Club members in Royal Greenwich can also access the company's wider nationwide network of over 1,100 on-street, low emission cars and vans in over 30 major towns and cities across the UK, including at many railway stations and transport hubs. For a limited period, residents of Royal Greenwich who sign up for the Enterprise Car Club can enjoy free membership (usual annual membership is £60), which also includes a £10 driving credit.

Go to: [www.enterpriseclub.co.uk/gb/en/programs/promotion/Greenwich.html](http://www.enterpriseclub.co.uk/gb/en/programs/promotion/Greenwich.html)

## "Think Gold – not Bronze"

**Back row:** Amanda Newton (Former England netball captain and Blackheath High School PE teacher), Tracey Neville MBE (retired English Netball player and Head Coach of the England National Netball team). **Front:** Cleona Arklie, Ioanna Ekleftheriou, Thalia Szollosi, Hannah Crane, Mia Harris, Madeleine Colyer, Tara Van Den Berg & Amelia Linacre



On a recent Sports Award Evening at Blackheath High School for Girls, Tracey Neville MBE urged girls to "Think Gold not Bronze," and commended BHS girls on their prowess

Tracey Neville MBE, a retired English Netball player and the Head Coach of the England National Netball team, spoke about her experience of leading England to Gold at the Commonwealth Games in 2018, and urged the girls to set their goals high.

The Head teacher Mrs Carol Chandler Thompson said "We challenge our students to put themselves outside of their comfort zone on a regular basis; this is particularly important for young women, who we know historically have tended to be risk-averse.

"Our mantra is: 'To try, and risk failure, is immeasurably more valuable than never trying at all.' Our annual Challenge Week allows us to celebrate this fearless attitude here at Blackheath High School."

**Anne Fuell**

## Greenwich performs! Tim Barnes

Many members of the Westcombe Society will recall with affection the old Greenwich Festival. This was held in high summer and had an innovative and varied programme.

The discussions about reviving the old Greenwich Festival have now turned to action! There is to be a Festival spanning two weeks beginning on Sunday 30th September and branded under the name Greenwich Performs.

On the opening night there will be a firework display, with food and drink and songs from the Rock Choir, at The Point. Those of a quieter disposition can enjoy a performance of Handel's *Esther* at St Alfege Church the same evening.

The programme thereafter is full, but a few highlights may be mentioned. On Monday 1st October there will be a performance by the English Piano Trio in which they will be playing pieces by Mozart together with readings from contemporary letters and diaries.

The following day will see the opening performance by the Changeling Theatre of their current production of *Measure for Measure* at the Greenwich Theatre. This will be preceded by Blake Morrison reading his anthology of prose and poetry.

The evening of Friday 5th October sees Greenwich Hospital's Oktoberfest in Greenwich Market and on the following week-end two days of activities put on by Greenwich Council at Cutty Sark Gardens.

The week-end of the 6th/7th October will see events for children. At Greenwich there is a production of *How to hide a Lion* based on the book by Helen Stephens on the Saturday and three performances of *Mischief and Mystery in Moon Land* on

Sunday October 7th.

The same weekend at Rothbury Hall there will be a Fun Day organised by Emergency Exit Arts on the Saturday and a concert by the Royal Greenwich and Blackheath Choir on the Sunday afternoon, when there will also be an Open Day in the Westcombe Woodlands.

One of the highlights of the Festival will be on Monday 8th October when the Early Music Specialists, Canticum, put on a performance at the Queens House.

Tuesday 9th October sees a conversation with Michael Frayn live at the Greenwich Theatre before the first night of his play *Here*. Wednesday 10th October sees the Graceful Company's production of a dance piece "This really is too much" at the Laban Theatre. Another dance piece ends the Festival on Sunday 14th October.

There are many other events. A full listing can be obtained from Visit Greenwich, the Greenwich Tourist Office and Greenwich Theatre. There should be something for everyone and we are holding down ticket prices so the maximum price for any event is £15 and many will be free.

The Festival is supported by the Council, the National Maritime Museum, Trinity/Laban and many others. Do come and enjoy the events. Depending on the success of this year's Festival we hope to make it an annual fixture with Charitable status and a still more varied selection of events in future years.

## Mycenae House & Gardens

**JULIE FELIX**

Major British Folk Star

**Friday 21 September**  
7.30-10.30pm Tickets £12

**MIRANDA SYKES**

plus The Kimberleys

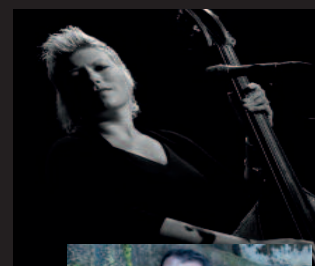
**Friday 28 September**  
7.30pm Doors Tickets £12

**TIM EDEY**

BBC R2 Musician of the Year

**Friday 5 October**  
7.30pm Doors Tickets £16/14

**020 8858 1749** [www.mycenaehouse.co.uk](http://www.mycenaehouse.co.uk)



## R.G. Austin

(Established 1963)

Heating Engineers,  
Property Maintenance,  
Electrics, Painting,  
Decorating, Plumbing,  
Central Heating,

GAS  
SAFE

Shower and Bathroom Specialists

2A Hassendean Rd, Blackheath SE3 8TS  
Telephone: 0208 858 7359  
[rgaustintltd@gmail.com](mailto:rgaustintltd@gmail.com)

## J K Auto Services

All makes of vehicles serviced

— Saab Specialist —

Tyres & Exhaust  
Fitting Service

Air Conditioning  
Re-gas & Servicing Facilities

Unit 52, New Lydenburg  
Industrial Estate,  
New Lydenburg Street,  
Charlton SE7 8NF

Tel: 020 8293 1511



# FEATURES

## Spread the Word! ICAN shows what can be achieved

Anna  
Trebble

**S**PREAD the word, a huge reunion, is planned to celebrate 20 years of helping Greenwich youngsters who struggle to communicate.

Families whose children attended the ICAN programme at Pound Park Nursery in Charlton or Mulgrave Primary School in Woolwich over the past two decades are invited to the giant catch-up in October.

Organisers estimate that some 1,250 youngsters have passed through ICAN since the scheme was launched in Greenwich in 1998. They now want to get in touch with as many of former pupils and families as possible to invite them to the special reunion to mark the contribution ICAN has made to the borough.

The event is taking place on October 11th between 5.00pm and 7.30pm at Mulgrave Primary School in Rectory Place, Woolwich. Families of former or current ICAN pupils should get in touch via [ican20thanniversary@gmail.com](mailto:ican20thanniversary@gmail.com) to save places at the reunion.

The event will celebrate what ICAN has achieved by sharing memories of ICAN and taking a look back at old photographs. Members of the team will deliver a talk about the programme and children will share stories of their time at ICAN. Light refreshments will be provided.

Lauren Adamson, Specialist Speech and Language Therapist at Oxleas NHS Foundation Trust, said:

"We're incredibly proud of what ICAN has achieved since its launch in Greenwich in 1998. We're hoping as many of our former students and their families as possible can get together in one place to help celebrate our milestone.

"We're also eager to use the anniversary to get word out about what ICAN and Speech and Language Therapy can do to help families who may have children experiencing a speech and language delay.

"It can be incredibly frustrating and frightening for families when a child's language and communication skills don't develop as they might expect."

Lauren added: "Makaton sign language

can help expression and understanding, empowering children to express their needs alleviating frustration. As the children start speaking, they begin to stop using Makaton."

Local resident Matt Nixon, whose son Theo, five, attended ICAN at Pound Park in 2016, said: "We can't speak highly enough about ICAN and the team behind it. It worked wonders with Theo and, through Makaton sign language, taught him the skills to start communicating with us which has led to him talking."

**For more information on Speech and Language Therapy assessment drop-ins in Greenwich:** <http://oxleas.nhs.uk/services/service/childrens-speech-and-language/>. See also: <http://www.mulgraveprimary.org.uk/386/ican> OR: <http://www.pound-parknursery.co.uk/About-Us/ICAN/>

## History of the Jetty

**D**r Mary Mills has produced a short popular booklet telling the story of a small section of the Greenwich Peninsula.

In *The History of the Jetty* she explores an area on the west bank of the peninsula including 'Bugsby's Hole' a site well-known to sailors. No one knows the origin of this name, but there are Bugsby's Holes in many parts of the world.

There used to be a causeway here, called Bugsby's Causeway, which ran down to the river, but it was removed in 2000 by the builders of the Millenium Experience exhibition. The area is now being overtaken by blocks of apartments.

A road used to run from Bugsby's Causeway to the Pilot Pub. The pub took its name from one of the prime ministers who led the country through the Napoleonic Wars, Pitt, who was known as "the pilot who weathered the storm."

**The booklet (with photographs by Rob Powell & R J M Carr) is available from Warwick Leadlay in Greenwich; or Mary Mills at 24 Humber Road SE3 7LT, price £3.00 a copy (2nd class stamp).**



**Above: a visual put out by campaigning group No Toxic Cruise Port**

they must either make a clear commitment to a clean terminal with a shore-based energy supply; or scrap the idea entirely.

It has been obvious to protesters for some time that the original proposals were incompatible with Council's clean air policies.

In another development, the Council has again stuck to its guns: it has refused planning permission to Rockwell for its plans for Charlton Riverside, which were incompatible with the policies set out in the Council's 2017 Charlton Riverside masterplan. Rockwell's proposals fell short on a number of issues, including its proposals for the number of affordable housing units, and the dwelling mix within the development, which was contrary to the policies set out in the Council's Core Strategy. In addition, the height, massing and design did not comply with the Council's master plan.

So, think again, Rockwell!

### FACT FILE

## What exactly is ICAN?



**T**he ICAN programme is funded by The Royal Borough of Greenwich, and supported by the Oxleas NHS Speech and Language therapy team.

The programme is a three-month intensive scheme supporting children to learn basic vocabulary and improve their communication skills.

This takes place in group and individual sessions and involves a great deal of repetition, as well as providing support for everyday situations, both in the classroom and at home.

The child's communication skills are supported through intensive speech and language therapy as well as structured teaching of effective communication strategies.

If appropriate, children who are about to turn three can be referred for a place at an ICAN nursery by their Oxleas NHS Speech and Language Therapist.

Each child on the programme works towards individual targets written by the speech and language therapists and agreed with parents.

The children learn to communicate by using several approaches: through play, small group speech and language therapy. Makaton sign language, which is designed to support spoken words, may also be taught to aid communication.

## St George's Community Lectures

**A** new series of community lectures at St George's Church starts this autumn. The vicar Rev Tim Yeager says: "We have an exciting line-up of speakers who will expand our knowledge of the world we live in, and inspire us in our work. All these events are free and open to the public, with refreshments and Q&A. The first lecture is in October." **Details below.**



**Thursday, 4th October 8:00 pm**  
**"Millicent Fawcett and Votes for Women 1918-2018"** - Dr. Jane Grant will give an illustrated talk on the 100th anniversary of the Representation of the People Act, which finally gave the vote to (some) women.

## Cycling Fatalities

**F**ollowing yet another death of a cyclist at the Angerstein roundabout under the A102, Marilyn Little has been urging RBG, TfL and the London Mayor to improve this blackspot and to continue the cycle superhighway to Woolwich.

After their visit to the site we have heard via our London Assembly member that both RBG and TfL have agreed to further safety measures around the flyover, and also address issues relating to the road from Greenwich town centre to Woolwich to improve safety for all road users. .

The Deputy London Mayor for Transport aims to extend the cycle superhighway from Greenwich to Woolwich within the next two years.

In June RBG were also asked what plans they had to improve pedestrian and cycle routes to the IKEA store together with the plans they had to cope with the additional traffic the store would create. No response to date but the Westcombe Society will continue to push for a response.

## In Praise of the NHS on its 70th Birthday



Each morning  
As I take my pills  
I bless  
The **NHS**

My years on earth  
Would be far less  
Without the **NHS**

If your life's a mess  
And you're in distress  
Or suffering from stress  
Consult the **NHS**

So now let us bless  
Our **NHS**  
And all who work  
in the **NHS**

**Gabi Marston**

**Greenwich Park are running a survey to gather public opinion and need for catering in the Park for the next 5 - 10 years. Please let them have your thoughts on this important topic by responding to the survey below:**

**<https://www.surveymonkey.co.uk/r/GreenwichPark>**

**JAMES REMOVALS**  
.com

excellence through effort

BAF Approved  
BAA Member since 2018

OFT Approved code

MEMBER

Fully trained uniformed staff  
Full insurance included in ALL quotes  
Prompt free estimates  
On-site containerised storage  
Discounts for long-term storage  
Well-established family business  
Pianos - our forte

Call  
**0800 0157775**  
for a free survey or visit  
**jamesremovals.com**  
to request a quotation online





# WHAT'S ON



## ARTS

**THE ARTS SOCIETY, GREENWICH**  
King William Court, Univ. of Greenwich  
**10th Sept. 7.15 for 7.45** Anthea Streeter talks on **VISIONARY ARCHITECT: DAME ZAHA HADID** All lectures are at 7:45pm, with wine served from 7:15pm. . PLEASE NOTE: This lecture will take place in the larger theatre. Turn left after entering King William Court and use the lift at the end of the corridor to reach the first floor.  
Visitors welcome, please pay at the door  
**THE ARTS SOCIETY, BLACKHEATH**  
**27th Sept. AGM at 2.00 pm Followed by Malcolm Jones on THE HONOURABLE AND DISHON-OURABLE ART OF ACTING** 2.00pm. with tea and coffee, and lectures at 2.30. Venue is St Mary's Church Hall, Cresswell Park Blackheath  
Visitors welcome, please pay on the door.  
**LIFE DRAWINGS at Mycenae House**  
Every Thursday 7.00 - 9.00 pm £15.00 per session under the guidance of Jon. No. need to book.  
Info: Tel Jon on 07435 569963  
email: jonathancdlong@gmail.com

## CHILDREN & FAMILY

**GREENWICH THEATRE CROOMS HILL**  
**GUESS HOW MUCH I LOVE YOU** 11 Sept. A playful story of love and nature told through puppets, live music and interactive play for children 3 and up.  
**SHERINGTON CHILDREN'S CENTRE, Tel. 0208 - 3053140 - 14, Sherington Road SE7 7JW**  
**DAD'S STAY AND PLAY** session every Wednesday, 1.00pm -2.30pm –free drop in Sherington Children's Centre, all home dads welcome Each 2nd Saturday of the month – 10.00am -11.30am – free brunch/arts and craft Contact Daniel.hall1985@hotmail.co.uk for more details, www.selondondads.org.uk  
**THE HORNIMAN MUSEUM**  
**COLOUR: The RAINBOW REVEALED**  
**Until October 28th:**  
This interactive exhibition explores the science of colour through hands-on exhibits and exciting games and challenges. Visitors can explore the fascinating ways it is used in nature, art and culture around the world. Why does a red toadstool have white spots? Why does a tiger have black stripes?  
[www.horniman.ac.uk](http://www.horniman.ac.uk)



## Learning is fun

St Olave's is a Prep School in New Eltham for boys and girls aged 3-11 years

- Broad, child-centred curriculum
- Excellent results in the 11+ selection
- Clubs, outings and residential trips
- Excellent pastoral care
- Small classes
- Specialist staff for PE, IT, Music, French and Drama
- Sibling fee reduction
- Before and after school care

Tel: **020 8294 8930**  
[www.stolaves.org.uk](http://www.stolaves.org.uk)



## THE WESTCOMBE SOCIETY

**Fri 28th September** 10.00am - 2.00pm  
MacMillan Coffee Morning  
**Sun. 14th October:** Macmillan Walk. Meet at 9.30am at Vanbrugh Castle. See page 2.  
**Sat 10th November** - Quiz 7.30-10.30pm in the Hall, Mycenae House  
**Sat 17th November** 11.30am - 4.00pm  
**Christmas Bazaar** Blackheath High School  
**We need more volunteers to help out at community events.**  
**Interested? Please ring Joanne on 07709 571777**

## THEATRE

**THE GREENWICH THEATRE, Crooms Hill, London SE10 8ES Box Office: 8858 7755**  
**SIRENS 4 Sep - 8 Sept.** Fresh from the Edinburgh Fringe Festival, award-winning Zoo Co returns with the story of three Greek sirens who find themselves washed-up on Hastings...  
**'MYCOOL SINGERS' GIVING THROUGH SINGING CONCERT** 16 Sept. One of London's most exciting community choirs performs heartfelt and uplifting renditions of soul, jazz and pop classics.  
**SKIN 20th - 22nd Sept.** 201 Dance Company fuses hip-hop and contemporary styles in a powerful story of family, identity and belonging.  
**AN ENEMY OF THE PEOPLE** 27th - 29th Sept. Flintlock Theatre reimagines Ibsen's classic in a searing examination of fake news, whistleblowing and power in contemporary Britain.  
**VENTOUX 30th Sept.** A restaging of the epic rivalry between Lance Armstrong and Marco Pantani on the fearsome Mont Ventoux in the 2000 Tour de France.  
**ADAM KAY: THIS IS GOING TO HURT (SECRET DIARIES OF A JUNIOR DOCTOR)**  
**1st Oct** Award-winning comedian Adam Kay shares entries from his diaries as a junior doctor in this 'electrifying' (Guardian) evening of stand-up comedy.  
**MEASURE FOR MEASURE** 2nd - 6th Oct  
Changeling Theatre presents Shakespeare's bawdy and witty comedy full of twists, turns, sin and virtue

## SPOKEN WORD

**IN-WORDS**  
**11 September GERARD MANLEY HOPKINS** at the Treehouse in Greenwich we mark the centenary of the first publication, in December 1918, of a book of Gerard Manley Hopkins' poems with Graham Fawcett and Sue Aldred. Do come!  
**Tickets £12.50. Available online through: [www.ticketsource.co.uk/in-words-ltd](http://www.ticketsource.co.uk/in-words-ltd)**  
**Visit [in-words.co.uk](http://in-words.co.uk) for more information.**  
**INDUSTRIAL HISTORY SOCIETY**  
**9th October 7.30pm** Graham Dolan. The Royal Observatory and the Greenwich Generating station Meeting in the old Bakehouse, behind Age Exchange.



## MYCENAE HOUSE LIVE EVENTS: September

**MYCENAE HOUSE, Mycenae Road SE3**  
**Sat 8th September 1pm** - Ceroc Evolution Dance Workshop. Dips, Drops and Seducers with "Top Drop" teacher Steve Thomas. £30.  
**Fri 14th Sept 8pm** - JazzNights. Candlit Live Jazz music event hosted by Dave Silk. £10.  
**Fri 21st Sept 7.30pm** - Julie Felix performs for International Day Of Peace hosted by Global Fusion. £12.  
**Fri 28th Sept 7.30pm** - Miranda Sykes. Solo tour from Show Of Hands' Acclaimed singer and bassist. £12.  
**Fri 5th Oct 7.30pm** - Tim Edey. Stunning mix of world music with inspired virtuosity hosted by Sonic Promotions. £16.  
*For further information visit [www.mycenaehouse.co.uk](http://www.mycenaehouse.co.uk)*

## MUSIC



**MUSIC APPRECIATION WITH MATTHEW TAYLOR: Serenata Notturna**  
**MONDAYS 17 & 24 SEPTEMBER, 1, 8, 15 & 29 OCTOBER, 5, 12, 19, & 26 NOVEMBER** 10.15am-12.15pm | Old Library, Charlton House SE7 8RE  
For the autumn term Matthew will illustrate the serenade through its history starting with Mozart through to Vaughan Williams. A term of many delights. **COURSE FEE: £95 (10-week course) | individual lectures £11 or try a taster for free**  
**Further details contact: Lionel Lewis 020 8297 1075 | [LJL@lioneljlewis.org.uk](mailto:LJL@lioneljlewis.org.uk)**  
**Presented by Blackheath Music TRINITY LABAN**

**FRI 5 OCT 13.05h** As part of the Greenwich Performs season, Trinity Laban Wind Ensemble play works by Mel Bonis, Jean Français, Helen Grime and R Strauss at the Old Royal Naval College Chapel, FREE. no ticket required  
**FRI 5 OCT 6.00pm**  
**Trinity Laban Symphony Orchestra Side by Side**  
Conductor Jonathan Tilbrook / Jonathan Mann  
**Grace Williams Symphony No. 2** at St Anne's Church, Limehouse Free, Ticket required  
**St ALFEGE CHURCH**  
On Sunday 30 September at 7.30pm there will be a performance of **Esther** (1718) by Handel with St Alfege Church Choir and Orchestra and guest soloists, directed by Stephen Dagg  
**Tickets £18 and £12 available now online [www.ticketsource.co.uk/st-alfege-church](http://www.ticketsource.co.uk/st-alfege-church), or by emailing [office@st-alfege.org.uk](mailto:office@st-alfege.org.uk) or on the door.**  
**.ON BLACKHEATH**  
The OnBlackheath festival takes place on the 8th and 9th September. It promises music, food and events for all the family.

## THE FAN MUSEUM

**12 Croooms Hill SE10 8ER**  
**A BIRD IN THE HAND** Tues- Sat 11.00 - 5.00pm  
**Sundays: 12.00 - 5.00pm** Until 23rd Sept.  
Exhibition of feather fans, including an exquisite fan, generously lent by The Fan Museum's patron, Her Royal Highness The Duchess of Cornwall. **Entrance: £5.00 Concs. £3.00 Children 7 - 16 £30-.00**

## CLEONA LIRA – 2PLAN WEALTH MANAGEMENT LTD.

**INDEPENDENT FINANCIAL ADVISER, CHARTERED STATUS.**  
**SPECIALIST IN INVESTMENTS, PENSIONS & ETHICAL INVESTMENTS.**

**Address: Heron Tower, 13th Floor, 110 Bishopsgate, London, EC2N 4AD**

**Email: [cleona.lira@2plan.com](mailto:cleona.lira@2plan.com) (T): 0207 112 4968**  
**Website: <http://cleonamarialira.2plan.com/> Blog: <http://cleonalira.co.uk/>**

**2plan Wealth Management Ltd is authorised and regulated by the Financial Conduct Authority.**

**It is entered on the Financial Services Register (www.fca.org.uk) under reference 461598.**

## Susan Clark Interiors



**Complete renovation to Decoration, Construction, Project Management Interior Design, Kitchens & Bathrooms**  
**Bespoke Curtains & Blinds, Joinery Upholstery, Furniture, Gifts, Cards**

**Tel. 0208 305 2299**  
**[www.susanclarkinteriors.com](http://www.susanclarkinteriors.com)**



# FEATURES

## Saving Greenwich's Historic Gas Holder

Peter Luck

A petition to save Greenwich's gas holder from demolition with 1388 signatures was delivered to the full council meeting of the Royal Borough of Greenwich (RBG) on 27th June 2018. The petition has also been sent to Southern Gas Networks (SGN), Historic England and the Department for Digital, Culture, Media and Sport (DCMS).

Writing from Munich, Dr Barbara Berger is quoted as saying "This gas holder is a masterpiece from the gas-engineer Sir George Thomas Livesey, built in 1889. The construction of the guide frame is unique and a milestone in the development of the guide-frame in the nineteenth century."

The petition calls for an early open discussion between the Royal Borough, SGN (as owners of the East Greenwich No1 Gas Holder), and heritage bodies on the future of the holder and its site.

It also called for RBG and SGN to honour the policy adopted by RBG on 15th November 2017, endorsing the Greenwich Peninsula 3 Planning Brief, and so committing the Borough to full or partial retention of East Greenwich No1 Gas Holder, repurposed or otherwise integrated into future development.

Complete or partial preservation is sought because of the holder's significance in gas industry history, its commanding presence in the landscape held for the last 130 years, and its status as the last standing relic of the industry of the Greenwich Peninsula. This industrial history encompasses not only the gas works but also the development of undersea communications cabling and a number of developments in industrial equipment, chemical production and foodstuffs.

Currently, the holder has no statutory protection from imminent demolition, scheduled for this autumn, if these hold-



2007 photo of gas holder seen across Thames from the Isle of Dogs  
PHOTO: Peter Luck

ing actions fail. Local resident Julian Wells said: "This unique structure helps define the area's identity."

For some twenty years efforts have been made to have the holder listed. They have all failed. The Monuments Protection Programme acknowledged its importance in 2001-2002, but the EH/HE verdict has been that it does not meet standards for listing as of special interest in a national context. The grounds for this decision remain contested.

While being critical of the initial decision of Historic England (and its predecessor English Heritage) and DCMS for not listing the holder, the authors of the petition are strongly against total demolition. That action can only take place in the context of an open discussion between the interested parties: the Royal Borough of Greenwich, Southern Gas Networks and representatives of industrial heritage.

Matthew Carmona, Professor of Town Planning and Urban Design,

UCL, Bartlett, commented: "As we embrace the future of Greenwich Peninsula, we should never forget its industrial past. Much industrial heritage has been lost but retaining the gas holder would be a positive and tangible link to that past, whilst helping to define a richer and more distinctive future."

*At the time of writing over 1400 people have signed the petition, which still remains open. Most of the signatures are from local people, but there are also signatures from a number of recognised figures in architecture, industrial conservation and planning, from the UK and Europe. Please contact peter.luck@waitrose.com for further details of the campaign and the petition.*

## New proposal for "pocket homes"

A proposal that would create 150 new one bedroom homes for ordinary working people in the borough has received initial approval by the Council.

Sites at three locations on housing estates, currently used as parking and garage areas, would pass to Pocket Living, a company specialising in building on plots of land that are considered too small for most building developers.

The Council has agreed to start consultation on the proposals with Council tenants close to the proposed locations: the Heights Estate, Charlton; on Kidbrooke Park Close, Kidbrooke Park Estate and on Quince Road, Orchard Estate (Lewisham).

As part of the plan, 80 per cent of the receipt from the sale of the land for the new homes will be ring-fenced to deliver new Council homes. The remaining 20 per cent will be used to improve the environ-

ment of the sites identified.

Sizwe James, Cabinet Member for Growth and Strategic Development, said: "The Council is committed to doing everything it can to alleviate the housing crisis for our residents. This project would put home ownership within the range of ordinary working people who have been effectively priced out of the market. At the same time, it would provide us with another stream of income to deliver on our promise to build more council homes in Royal Greenwich."

The one-bedroom flats are aimed at single renters currently priced out of the property market. The properties in the scheme would be sold at 20 per cent less than market rates. Purchasers would own 100 per cent of their homes; there is no shared equity, and 70 per cent of Pocket buyers have incomes of less than £40,000.

Pocket homes are only available to first-time buyers who either live or work in the borough. Rules would be in place to ensure that the homes remain affordable in perpetuity and available to the target group. All the developments would be subject to planning permission.

The proposal agreed by Greenwich Council's cabinet has had a mixed response. Some councillors are angry that Meridian Home Start was not chosen. This was a company set up by the council to develop new homes to rent at 65% of market rents. (See *WN*, April 2018)

This is in contrast with Pocket Living's plans, which would sell the homes to Greenwich residents at a 20% discount, with a covenant in place to ensure they cannot be sold for a year after purchase.

The Housing Scrutiny Panel will be looking at the proposal in due course..

### Grant Saw Wealth Management Limited

**INDEPENDENT PERSONAL and CORPORATE FINANCIAL ADVISERS**  
Investments - Pensions - Estate Planning

2 Charlton Road, Blackheath Standard  
London SE3 7EX (T) 020 3417 9760  
email: enquiries@gswealth.co.uk  
website: www.gswealth.co.uk.

**HELPING YOU PLAN YOUR FUTURE**  
Grant Saw Wealth Management Ltd. is authorised and regulated by the Financial Conduct Authority



### JOHN DANN FURNITUREMAKER - EST. 1984

High quality bespoke fitted and freestanding furniture made to your requirements. Repair and restoration work also undertaken.

E-mail: johndann93@gmail.com  
Website: johndannfurniture.co.uk  
Tel.0208 852 3047 or 07837 859763

### FACT FILE

## The Significance of the Gas Holder

The East Greenwich No1 Gas Holder was built in the 1880s to the designs of George Livesey as part of the new and very large gas works planned by him as a model for future coal gas production which, indeed, it became.

The holder itself was a development of an earlier holder at Old Kent Road, being very much larger and having a shallow tank (the part of the holder let into the ground) made necessary because of adverse ground conditions.

To compensate for the shallowness of the tank the above-ground holder was taller with the telescopic gas container (the bell) having four lifts instead of the hitherto customary two. For a while this was the largest holder in the world. Its greater height and diameter required further modifications to the guide frame, the skeletal structure seen today.

In addition to a single cross bracing to each bay between uprights and horizontal framing members as had been adequate for the earlier holder, a second bracing across two bays was added. This gave strength and also contributes to the greater visual fascination of the frame which, being rigorously un-decorated, can be seen as a precursor of twentieth century modernism.

At 180 feet high the holder is widely visible and will remain so as high rise development takes place in the vicinity. To the west wharves have safeguarded status and so will remain low-rise, and the holder stands in a commanding position by the Blackwall Tunnel approach road. It is also, as an exceptionally fine example of an increasingly rare structure, a fine 'badge' of identity for the area.

As such it is also the last intact survivor of the gas works and one of very few (none so boldly visible) of the industrial heritage of the peninsula.

See: *Mary Mills: Greenwich Marsh – the 300 years before the Dome (M Wright 1999) and The gas holder (forthcoming).*

## A Visionary Architect

Before her death in 2016, Dame Zaha Hadid was one of the most distinguished architects in the world, and a talented designer. She twice received the UK's most prestigious architectural award, the RIBA Stirling Prize, and in 2012 was made a Dame for services to architecture.

In a lecture organised by the Greenwich Arts Society, we can hear the story of this visionary architect, from her early abstract paintings to her first sharp-angled buildings and her later structures, extruded to the most extreme organic shapes in what she called a "seamless fluidity".

The lecture will look at her completed works, including her most famous building in the UK, the Aquatics Centre for the London Olympics in 2012, as well as unexecuted designs.

The lecturer, Anthea Streeter, studied Fine and Decorative Arts in London and at Harvard University, where she developed her interest in 20th century architecture. Since returning from America she has taught on courses in Oxford and London, and given numerous lectures.

This lecture will take place in the larger theatre of King William Court; on entering, turn left and use the lift at the end of the corridor to reach the first floor. Date for your diary: 10th Sept. 7.15 for 7.45. Visitors also welcome, please pay at the door.



# ENVIRONMENT



Planning applications can be viewed in the library, or at the Woolwich Library on the lower ground floor of the Woolwich Centre, 35 Wellington St. They may also be viewed on [www.greenwich.gov.uk/planning](http://www.greenwich.gov.uk/planning)

## When is a consultation not a consultation?

Short answer: When it's in Greenwich. The public were given all of three days' notice of this "consultation".

If you manage to get there, be sure to ask how many genuinely affordable housing units are envisaged. And how much social housing.



KIDBROOKE STATION PROPOSAL: 2016

On July 3rd it was announced that design proposals for a further large housing development of high rise flats would be revealed on Saturday 7th July. The image above shows the scheme as proposed in 2016.

The site is the present green triangle bounded by the A2, the railway at Kidbrooke Station and the Kidbrooke turn off from the A2. Early indications have suggested up to 600 units will be built in a series of higher-rise blocks.

The Developer expects planning permission by the end of this year, making a site start during 2019 possible. In considering this proposal it should be noted that the site of the old Thomas Tallis School is also earmarked for future housing development.

This was a first consultation with a

look at current proposals. It was announced that "TfL is committed to unlocking surplus land for much needed housing in London and it has released land next to Kidbrooke Station. To the south and east of the Site is Kidbrooke village.

Working in partnership with TfL, Notting Hill Genesis, are seeking to provide much needed new housing on the site as well as a range of commercial uses.

The consultation took place at Kidbrooke Village Centre, Efford Close Kidbrooke Village London SE3 9FA on Saturday 7th July.

Yet again we have a paper exercise at extremely short notice, at a time when many people are away: a much cherished (or reviled) tradition in this borough....

Surely no one is pulling a fast one?

## PLANNING APPLICATIONS

(See also <http://www.westcombesociety.org/>)

**LEIGH ACADEMY** ref 18/2233/F

(Former Blackheath Bluecoats School) Old Dover Road SE3 8SY

Demolition of existing school and re-development of the site for a new 11-18 co-educational school. 540 pupils in September 2020 rising to 1150 pupils at full occupation in 2024/25.

**122 COLERAINE ROAD** ref 18/2488/HD (Resubmission) comments by 5 Sep

Construct 2-storey side extension, single storey rear extension and formation of dropped kerb

**6 GLENLUCE ROAD** 18/2560/HD comments by 5 Sep

Construction of a rear dormer extension with 2 front and 2 side roof lights.

**9 CHARLTON ROAD, CHARLTON** ref 18/2672/HD

Construction of rear and side dormer extensions with Juliet balcony to the rear

**15 BEACONSFIELD ROAD** ref 18/2810/HD

Demolition and construction of a replacement side extension, installation of new Edwardian-style canopy porch, installation/removal/ replacement of windows and new access steps to rear garden.

**WESTCOMBE HILL DRY CLEANERS** 18/2321/F comments by 5 Sep

Construction of an additional storey to facilitate creation of 1 x 2-bed self contained flat. Subdivision of existing 3-bed flat into 2x1-bed self contained flats

**118 WESTCOMBE PARK ROAD** 18/2533/HD comments by 5 Sep

Construction of a single storey rear extension. Demolition of wall, fence and gate and replacement venetian panel fence and gate

### Conservation issues

Maggie Gravelle of the Westcombe Society Environment Committee and representatives of five other amenity societies met with the Planning Department to discuss revisions to the department's advice on residential extensions, basements, and conversions.

Among their requests: stronger and clearer guidelines on basements. As reported in June's *WN*, a full consultation will begin on the issue in the autumn, when the Conservation Officer has said she hopes to take forward the committee's request for new Article 4 directives. These would strengthen conservation area protection measures against off-road parking and changes to windows and doors.

### A & A LANDSCAPES Landscape Specialists



Free advice & estimates



Qualified horticulturalist

All aspects of soft & hard landscaping work carried out including

- \* Maintenance
- \* Site clearance
- \* Turfing
- \* Tree surgery
- \* Fencing
- \* Patios
- \* Brickwork

Tel. 020 8318 2530

### SPECTRUM

Painters & Decorators  
Interior/Exterior

No job too Small  
Clean and Reliable

Free Estimates  
30 Years Experience

020 8853 2759 or 0795 0815412

Email: [paulgammon.pg@gmail.com](mailto:paulgammon.pg@gmail.com)

## Flower Power

### Graham Wood in action

On a hot afternoon in late June Graham

Wood, our Blackheath Royal Standard Village Association (BRSVA) Tree Surgeon – great name for a tree surgeon – and his friend replanted the wooden flower box which sits on the road island between the Post Office and Royal Standard pub.

This box was kindly given to the BRSVA and The Westcombe Society by Greenwich Council just over a year ago and has been filled with flowers and cared for by local volunteers ever since. Thanks to them, the flowers have flourished in spite of the oppressive heat of the summer.

The BRSVA and The Westcombe Society work together with the Local Traders and have a shared aim of making

this part of Greenwich a pleasant place to live, visit, work and shop. The Standard has a long, interesting but little-known history and the old Roman Road of Watling Street, runs right through it.

The Westcombe Society donate, erect and decorate a Christmas tree every year which stands in the centre green.

The Standard Traders' Society help with Christmas street lights and the BRSVA have made and erected a signpost displaying the Royal Borough of Greenwich crest to replace the original old post which had long gone. There is still a lot to do – but we are slowly getting there.

**Patricia GILLARD, Chair, BRSVA.**

PHOTO: Patricia Gillard



## An End to Cladding Wars at Capital Quay

A result, at last, for the 1000 households at New Capital Quay near Deptford Creek – probably the largest privately-owned development in the UK with Grenfell-like cladding. (See April's *WN*).

In July, the National House Building Council announced it will be paying to replace the cladding – which could cost anything between £20m and £40 million.

The NHBC was the warranty insurance provider at New Capital Quay, and it also acted as the building inspector during the construction of the blocks.

This is a welcome end to a long-running dispute between the developer, Galliard, the NHBC, and the residents, who at one time claimed they felt they were being treated like hockey pucks.

Leader of the Council Cllr

Danny Thorpe, and local MP Matt Pennycook, have welcomed the news.

However, the question arises as to whether local councils should have much more stringent rules over new building developments. But one thing, however, is clear: the blocks will resemble a building site for some months to come.



**Eltham Executive Charter Ltd**  
Quality Mini Coach Specialist



16,29 Seater Minicoaches  
Premium 12, 24 & 36 seater Minicoaches with WC & facilities

**T 020 8850 2011**

E enquiries@eec-minicoaches.co.uk W [www.eec-minicoaches.co.uk](http://www.eec-minicoaches.co.uk)  
1 Bromley Lane, Chislehurst, Kent BR7 6LH



**RECTORY COURT  
& LEAH LODGE**

**LUXURY CARE HOMES IN BLACKHEATH**

*Determined to be the difference*

**Residential | Dementia\* | Respite | Day Care**

**Rectory Court** The Glebe, SE3 9TU | Tel: 0203 553 5768  
**Leah Lodge** Blessington Rd, SE13 5EB | Tel: 0208 108 2802

[www.cinnamoncc.com](http://www.cinnamoncc.com)

Emerson Park Apartments & Emerson Grange Care Home  
Opening July 2018 in Hextable, Kent

THE *Cinnamon* CARE COLLECTION

\*Select locations.



# MARKET PLACE

Please send ads for the Market Place with payment by the 10th day of the preceding month to:  
**Marilyn Little, 163, Westcombe Hill, SE3 7DP**  
**8853 1312 Advertising@westcombesociety.org**  
*ALL classified adverts 30p per word. Please make cheques payable to The Westcombe Society*

**ROOMS FOR HIRE**  
**FUNCTION ROOM FOR HIRE**  
Blackheath area, up to 150 people, Bar, disabled access. Tel 07940 296290

**GARDENING**  
**GRASS CUTTING**, hedges, tree work. 020 83097910.

**HOLIDAYS**  
**WHITSTABLE WEEKENDS / WEEKS** Sea wall house between Oyster Warehouse and Harbour. Sleeps 5. Fantastic views. 8858 6578 or 013 04 367443

**PERSONAL CARE & THERAPY**  
**LOCAL BABYSITTER (STUDENT)**  
Evenings and weekends. References available. £6 per hour. Bookings: 07946 530053  
Email: ibabysit.SE3@Gmail.com

**SERVICES & TRADE**  
**REPAIRS & ALTERATIONS:** School trousers, Blazer sleeves, shorter, Hems, Darts in dresses, and Jackets relined etc. Call 07904 880 448  
**S.S.D BUILDERS LTD.**  
Long established Building & Roofing Company available for free estimates & advice. ALL works undertaken, from guttering to Refurbishments. All works viewed within 24 hours, fully insured & new work is guaranteed. Call us today on 07931 536533 or 0208 305 1039 ssdbuilders2@hotmail.com  
**TOM ELLIS BESPOKE CARPENTRY**  
Alcove bookcases, cabinets, wardrobes and window seats. M. 07510 869 947  
**WESTCOMBE CLEANERS** I'm a friendly, hard-working & organised domestic cleaner. Regular or single services. Competitive rates. Additional tasks. I love my clients to be happy. Phone 07746 291617  
**PHONE/BROADBAND SOCKETS.**  
Improved Broadband speed plates, Fault Finding Repairs, New Extensions, Tidying of cables. 25 yrs BT, Insured. 07845 705900  
**JEWELLERY AND WATCH REPAIRS AND VALUATIONS** from Michele Franklin. British Jewellers Association accreditation 07809 502 714  
Michele@personaljewellerylondon.co.uk  
**SUNSHINE WINDOW CLEANING** For a no-obligation quote call Martin on 07821403577  
**SHOW YOUR COMPUTER WHO IS THE BOSS**  
Are you looking for some extra help working with your computer? Need some help with your digital photos, online shopping and the jargon? To discuss the options, call Paul on 07958 251448 or email paul.clayton@soulchip.co.uk  
**AIR CONDITIONING & ELECTRICAL WORK** Fully qualified engineers CSCS Tel: 07419 312547  
**PEST CONTROL SERVICES** All types of pests dealt with including fox control. Call John 0208 300 3496  
**C.S. CARPENTRY-JOINERY**  
Decorating and all building work undertaken. Joseph McNamara 8857 5480, mob. 07947155366

**MARK CHEESEMAN, LOCAL CARPENTER AND JOINER WITH OVER 30 YEARS EXPERIENCE.** All Aspects Of Carpentry and Construction Executed Considerately and to a High Standard. Both Traditional and Contemporary Design Joinery - Cupboards, Wardrobes, Floating Shelves Etc. Sash Window Overhaul. If you have Rotten Window Sills, Door Frames Etc. rather than replace them with the associated upheaval and expense, why not have a Timber/Resin Repair? Please Call Mark on 07767 456131 or H: 020 8854 4028.

**S.S.D PLUMBING AND HEATING** Friendly local plumber available for free estimates and advice. All works undertaken, no job too small, from boilers to bathroom suites, all works viewed within 24 hours, fully insured and new work guaranteed. Call today on 07931 536533 or 8305 1039 ssdbuilders2@hotmail.com  
**UPHOLSTERER SPECIALISING IN TRADITIONAL UPHOLSTERY** Www.suemayesupholstery.net or phone 07932 040298

**S.S.D DAMP PROOFING SPECIALISTS** in the treatment of RISING & PENETRATING damp. Repair/renewal of rotten structural timbers as a result of damp. Chemical injection and render using tried and tested systems. Specialists in providing horizontal and vertical barriers against damp/ water ingress. Please contact us for a free consultation and written estimate. Mob: 07931 536 533 Land: 020 8305 1039

**PUBBLE PLASTERING** Need a plasterer with excellent references? Work is of high standard. Qualified C&G. Plastering-Rendering-Plasterboarding - Repairs. Free quotes! Call Alex on 07547 468459 / 0203 092 0684 pubbleplastering@googlemail.com

**MALCOLM TIERNEY, CARPENTER** Specialist in refurbishment, repair and replacement of sash windows. 0777 5657371

**LOCAL CARPET/OVEN CLEANER** Specialist in cleaning Carpets & Ovens, Upholstery & rugs. Competitive rates. Email: adam@carpetcrew.co.uk M: 07828503132 http://www.carpetcrew.co.uk

**DECORATING, ELECTRICS** Plumbing and Property Maintenance. Est, 25 years. References available. Phil McNamara 8857 5480, mobile 07814 360862

**A MAN AND A VAN** Tel: 020 8858 3889 Mobile: 07885 917842

**HANDYMAN.** Small works, furniture assembly, brick-work, plastering, hard landscaping, fencing, paving, small carpentry work, deliveries and light removals. Call Chris Pepper: 07944680269

**GREENWICH LONDON BLINDS** your local made to measure blinds and curtains company - Professional, Reliable and Independent. Free quotes and friendly advice. Please call Neil - 07795 087267 or email hello@greenwichlondonblinds.com

**WINDOW & GUTTER CLEANING** Blackheath-window-cleaner.co.uk 07791 465052

**T.TA ELECTRICS.** NICEIC Approved Contractor, Quality Tradesman. All electrical work undertaken, Fully Insured & Guaranteed. 24HR EMERGENCY ELECTRICAL. Please call Tony on 07961 509403 OR 020 8488 7425 OR info@ttaelectrics.co.uk

**INTERIOR DECORATOR & CARPENTER** with over 20 years experience. A member of the guild of master-craftsman. Free quotes & friendly advice on all your decorating requirements. Local references available. Tel. Ashley Greaves 8858 2981

**HOMEWORKS** All-round handyman for those DIY's you have no time for! General repairs. Painting & Decorating. General Carpentry and flooring. Flat-pack assembly. Patio and deck cleaning. No job too small. Contact Matthew Barron 07903 388658

**ELECTRICIAN / ALARM ENGINEER**  
No job too small TMIET registered. Call 07879 011792

**TRAINED CHIMNEY SWEEP & STOVE INSTALLER** Fast, friendly Happy to work! Call Anthony on 07772 649577 or email: chimneymaintenance@gmail.com

**TUITION**  
**ITALIAN TUITION** Native Italian teacher offers lessons at all levels.Preparation for GCSE, A-LEVELS courses, Grammar, Conversation Tel 07788 743371  
**MATHS & ENGLISH TUITION** and preparation for 11+ and independent school selection tests by qualified and experienced teacher.marystuition.com Mary Bauckham 07709089838 mary.bauckham@gmail.com  
**LOCAL PRIVATE TUITION** 1-1 or small group tutoring in English and Maths learning support GCSE by qualified tutor. Call: 07904 880 448  
**SHOW YOUR COMPUTER WHO IS THE BOSS**  
Are you looking for some extra help working with your computer? Need some help with your digital photos, online shopping and the jargon? To discuss the options, call Paul on 07958 251448 or email paul.clayton@soulchip.co.uk  
**RUSSIAN TUITION.** Russian-speaking university lecturer offers lessons at all levels (including university, business and conversation) in your home/office. Tel.: 07766 531401  
**SPANISH TUITION** all ages and levels, GCSE, A levels , conversation, literature, by Latinoamerican native speaker. Please contact Miguel at migansiergut52@gmail.com or 07910 318513  
**MULVIHILL ACADEMY OF IRISH DANCE** Adult and Child Irish Dance Classes available in the Blackheath area. Come along for a fun-all-in-one workout. For more information call Rachel on 07707 100521  
**11+ TUITION** Successful, qualified and experienced DBS-certified tutor providing one-to-one preparation of all eleven-plus exam components (CEM, GL systems). Evenings, weekends available. Email: elevenplus.smarter@gmail.com  
**MATHS TUITION** Qualified and experienced secondary teacher offers tuition to GCSE level. Call Miv Whitaker: 07745816338; or email miv.whitaker@gmail.com

**BUY LOCAL!**  
Discounts available on production of your Westcombe Society membership card.


**BLACKHEATH VILLAGE:**  
**PARES FOOTWEAR**  
10% OFF all shoes over £20, excluding sale stock  
**RAFFLES DESIGNER WEAR.**  
10% OFF all non-sale goods  
**THE VERB SHOP** 10 percent discount on all copywriting and content creation. Free 1 hour assessment of your marketing material.

**GREENWICH:**  
**NORTH POLE RESTAURANT**  
12.5% OFF Meals only for two  
**3D DIVING** 10% discount on all scuba diving courses. Offer excludes scuba diving equipment.  
**GREENWICH COMMUNICATION CENTRE**  
at 164 Trafalgar Road: 10% Discount on all Computer Maintenance & Repairs (inc Tablets & Smartphones)  
www.greenwichccc.com T: 02082692103  
**HUMBER ROAD:**  
**BODYWORKZ - THE FITNESS CLINIC**  
109 Humber Road.10% OFF all treatments costing £30 or more except Chiropody; exc.Saturdays.  
**ROYAL NEPALESE RESTAURANT**  
(Station Crescent) 20% OFF meals for two or more Sunday - Thursday.  
**CORIANDER RESTAURANT** (Station Crescent) 25% off Sunday to Thursday. Bookings only!

**THE STANDARD:**  
**COTON & HAMBLIN - OPTICIANS**  
£65 off complete spectacles  
**BLACKHEATH EYECARE OPTICIANS**  
20% off 2nd pair of spectacles. (Same prescription). Not in conjunction with any other offer. (Complete glasses start from £49.95 with single vision lenses). 5% off contact lens solution and accessories. https://www.blackheatheyecare.co.uk/  
**TROJAN PRESS** 10% OFF all quotations  
**WESTCOMBE HILL**  
**A \* DRIVING SCHOOL** £5 discount on the price of one x 2 hour lesson for WS members.  
**THE WONDER WOMEN NETWORK** 10% discount  
**WESTCOMBE PARK ROAD**  
**KAREN STOREY OF HOMESPACE** offers members 10% discount on decluttering & homestaging services.Please note new number: 07951 191086 www.home-space.biz  
**PENINSULA**  
**SHENDA FALVEY PERSONAL TRAINING & BOOTCAMPs** Free bootcamp session at Greenwich Peninsula worth £10. Book to secure place (excludes existing customers)  
25% off first personal training session plus free consultation M: 07887 727 335  
www.shendafalveypersonaltraining.com

**WRISTWORTH HEATING & PLUMBING**  
Installation - Servicing - Repair  
Tel: 07725 008280  
Email: wristworth@hotmail.co.uk  
GAS safe REGISTER  
Check Out Our **NEW** Website: wristworthheating.weebly.com

**BUILD & CREATE CONSTRUCTION LTD**  
**BE INSPIRED AND BUILD**  
Extensions and refurbishments



buildandcreate.co.uk  
clinton@buildandcreate.co.uk  
0796 1089012 0208 305 2184


Proud members of  
**Checkatrade.com** Where reputation matters  
**NFB**

**PAINTING & DECORATING**  
Interior/Exterior/  
Experienced Reliable Clean  
Fully Guaranteed/Insured.  
References available.  
Free no obligation quote  
and advice given  
**JOHN at JAMES & LAMONT**  
Office 020 8462 4646  
Mobile 07802 535695  
jamlam.john@btinternet.com

**LOCAL DRESSMAKER**  
Bespoke garments for Weddings,  
Proms & Special Occasions.  
Repairs and Alterations School  
trousers/Blazers sleeves shortened.  
Hems taken up, Jeans taken in.  
Dresses re-shaped  
and jackets re-lined.  
Over 25 Years experience.  
Call: 07904 880 448

**Gartel Design & Construction Ltd.**  
*Est.1975*  
Extensions/Orangeries  
Brickwork/Block Paving  
Driveways & Patios  
Roof Works/Painting & Decorating  
**www.gartel.co.uk 0208 858 5123**

**StChristopher's**  
More than just a hospice  
**TWO HOSPICES, ONE CAUSE**  
Greenwich & Bexley  
Community Hospice



**OUR FIVE MILE WALK FROM GREENWICH TO BLACKHEATH SATURDAY 29 SEPTEMBER 2018**  
020 8768 4575 • **www.twilightwalk.london**  
St Christopher's is registered charity number 270667 and Greenwich & Bexley Community Hospice is registered charity 1017406, both registered with the Fundraising Regulator

**GRANT SAW**  
SOLICITORS LLP

**For You & Your Family:**

- Divorce and Financial Settlements
- Children Disputes
- Residential Property- sales and purchases
- Transfer of Equity
- Leasehold Extensions and Enfranchisement
- Wills and Probate
- Lasting Powers of Attorney

**For Your Business:**

- Commercial Property
- Sites for Redevelopment
- Commercial Contracts
- Mergers and Acquisitions
- Dispute Resolution
- Court and Tribunal Proceedings
- Insolvency

E-mail: **enquiries@grantsaw.co.uk**  
**www.grantsaw.com**

Greenwich Office Norman House 110-114 Norman Road Greenwich, London SE10 9EH  
Blackheath Office 9 Hare & Billet Road Blackheath London SE3 0RB  
**Tel: 020 8858 6971**

