



Westcombe NEWS

Free to 3800 homes, in libraries and some shops

April 2018 No. 3



A community newspaper commended by the London Forum of Amenity & Civic Societies

Sound in body, sound in mind

Oxleas NHS, which became a Foundation Trust in 2006, provides health and social care services in south London and Kent that take care of the whole person – body and mind.

Care is provided for people of all ages and Oxleas works closely with a variety of partners to ensure that the services are well-integrated and wide-ranging. The workforce of around 3,500 people includes many highly skilled health and social care professionals, working in over 125 sites across the London Boroughs of Bexley, Bromley and Greenwich – and into Kent.

Oxleas provides a range of physical health services to adults and children in the community in the boroughs of Greenwich and Bexley.

These services range from

community midwives and health visitors working with the very young to district nurses and therapists meeting the needs of older people.

Other services

Oxleas has also been the main provider of specialist mental health care and learning disability services in Bexley, Bromley and Greenwich for more than ten years.

As well as community health services in Bexley and Greenwich, and specialist services in Lewisham, Oxleas also

estimated to be around £100 billion annually – roughly the cost of the entire NHS.

Oxleas began providing child and adolescent mental health services across the three boroughs in 2001, and was one of the first trusts providing mental health services in the country to benefit from the greater local accountability and financial freedom offered by foundation trust status.

Mental health

Physical and mental health are closely linked – people with severe and prolonged mental illness die on average 15 to 20 years earlier than other people – one of the greatest health inequalities in England.

The NHS Five Year Forward View, published in October 2014, recognised that there is no one-size fits all, and set out the challenge for leading NHS trusts to respond to the needs of the community by working together.

As a result Oxleas NHS Foundation Trust, South London and Maudsley NHS Foundation Trust and South West London and St. George's Mental Health NHS Trust are working together to spearhead a better mental health service across South London.

This partnership is called the South London Mental Health and Community Partnership, and enables the different members to share innovations and provide support to other trusts.

While hailing the achievements of Oxleas NHS, some questions remain about how closely it can or should work with local community groups. (See box, right.)

provides specialist forensic mental health care in SE London and Kent Prisons.

Among the partners is Charlton Athletic Community Trust (CACT) which set up the Up & At'Em programme for older people.

Established last year, the Trust's activities include weekly sports, leisure, arts and culture-based events as well as boat and theatre trips.

This programme has been highly commended for a national mental health award. CACT delivers the project, which is for over 65s, on behalf of Oxleas. CACT is the only football community trust to have been shortlisted for any award.

Community partnership

Mental illness is the single largest cause of disability in the UK, and each year about one in four people suffer from a mental health problem.

The cost to the economy is

WN Reporter

Work in prisons

Far from being rehabilitated, prisoners often come out of prison in a worse state than when they went in.

Last year, a wellbeing peer mentor scheme which looks after the emotional welfare of prisoners in distress won the Mental Health Category of the Patient Safety Awards 2017.

This award was set up by health practitioners Debbie Smith and Susie Duthoit and offers support through both one-to-one and group support sessions. All of the mentors are fellow-offenders who are trained by Oxleas staff to deliver mental health support to those in need.



The Likely Lads: Calum, Ralph and Ed in Luxor, Upper Egypt. They are on an epic bike ride from Cairo to the Cape raising money to combat Malaria
<https://www.AgainstMalaria.com/AfricaNorthtoSouth> (See Letters, page 2.)

Comment

In a field like mental health, public support, involvement and awareness is crucial, and cannot be achieved by a top-down approach: in the words of the Yoruba proverb, “Even the sharpest knife cannot carve its own handle.”

For example, the Westcombe Society supported two charities: * MumsAid, which offers counselling to women who are pregnant or have a baby under two years old, who feel that they could benefit from emotional support;

research indicates that one woman in ten has mental health problems before, or after, the arrival of a new baby.

* the Mental Health Activity Trust, which provides emotional support, counselling and employment to people far and near. Oxleas Trust has at times referred patients to the MHAT.

Groups like these play an important role in the community: they save NHS Trusts money by helping to prevent problems developing, they help people in need, and they raise the consciousness of the public about the importance of helping and supporting people with mental health issues.

Such groups often survive on a shoe-string: they are notoriously starved of funds. Shouldn't Oxleas recognise the value of community organisations like these, and provide just a little financial support? How about it, Oxleas?

Local school plans gender-neutral loos

Blackheath High School for Girls has announced that gender-neutral lavatories are to be installed in case any pupils decide to transition.

According to a report in the *Daily Telegraph*, the head of the school, Mrs Carol Chandler-Thompson, said the move followed requests from students.

She added that she wanted to ensure that there was “a safe space” for pupils to discuss such issues as gender and racial identity, and sexual orientation.

Girls at the school have already shown awareness of the sensitivity of such issues; for example, they managed to persuading Mrs Chandler-Thompson to allow them if they wanted to wear trousers instead of skirts as part of the school's uniform.

The head said there were currently no transgender children at school, and no female pupils were transitioning to become boys. Although the school had an admission policy whereby it could only admit pupils who were female, if a girl were to transition, she said that the school would be fully supportive.

Mrs Chandler-Thompson said that “intelligent conversations” took place between teachers and pupils about the use of gender-neutral language.

Westcombe Society

**Queen Elizabeth's
Birthday Tea for Senior Citizens
Sat 14th April 2.00 - 4.00 pm
Invitations have been sent out. If you
have not received one please ring
Caroline of 8853 0948.**

**Council Election Hustings
on Monday 16th April
7.15 for 7.30 at St George's Church,
Glenluce Road.
Meet candidates, ask questions!**

**Annual General Meeting
Friday May 11th at 7.30 pm.
in The Centenary Room,
Blackheath High School for Girls,
Vanbrugh Park
by kind permission of the Head,
Mrs Carol Chandler-Thompson
Your chance to hear what's going on -
and to elect a new committee.
Wine & Nibbles.
Nominations for new members of the
committee needed!**



Newsbriefs



Old Dover Road Parking

Readers are reminded they should read parking signs before they park, as new parking restrictions are now in place in much of the Westcombe Park area. This includes the Old Dover Road outside the shops.

Bays with restrictions are clearly marked. Note also that there are now two zones in the Westcombe Park area with Westcombe Park Road as the boundary. If you have a permit make sure you don't park for more than 2 hours in the zone for which you don't have a permit.

Local farms

Woodlands Farm on Shooters Hill is not the only farm on our doorsteps. There's also one near Canary Wharf: Mudchute Farm is a 32-acre working farm that opened in 1977, and is the only farm in London approved by the Rare Breeds Survival Trust. So if you want to see a rare Whitefaced Woodland sheep, or some Golden Guernsey goats, Mudchute Farm is the place to visit any time between 8.00 - 4.00pm.

Cruise liners scuppered?

The *WN* has repeatedly reported on the ongoing saga of Enderby Wharf and the cruise liner terminal that received planning permission as far back as 2011. Campaigners strongly opposed the plan on environmental grounds: it would have allowed visiting liners to use diesel to fuel electricity supplies, rather than requiring them to use shore-based “clean” energy supplies.

Now, in a surprise move, Morgan Stanley has put up the site for sale to a new developer at a reported cost of £50 million. Morgan Stanley's erstwhile partners Barratt Homes said they were not involved in developing the cruise liner terminal: their involvement with the project ended with the completion of the residential development of some 616 new homes. The first ships were due to moor by 2014. Now, there is a serious question mark as to whether the cruise liner terminal will go ahead. (See also Letters, page 2.)

London Marathon Alert!

The annual London Marathon takes place on April 22nd. Drivers should be prepared to adjust their travel plans accordingly. In sum:

- * Local roads in the area will close at 07:00 to secure the race route, including: Shooters Hill Road, St John's Park, Old Dover Road, Charlton Way, Vanbrugh Park, Charlton Road, Charlton Park Road, Charlton Park Lane and Woolwich Road (A206).
- * Roads are anticipated to reopen by 12:00.
- * During the road closure times, resident Vehicle Crossing Points are as follows: 07:00 - 09:00 and from 11:30:
 - Vanbrugh Hill to Blackwall Lane
 - Kensington Road, and Victoria Way, to Blackwall Tunnel Approach
 - From 11.30, Maze Hill to Shooters Hill Road westbound (only) towards Deptford

NOTE: Between 09:00-11:30 Vehicle Crossing Points will not operate.

For more information contact the London Marathon helpdesk on 0207 902 0200 or helpdesk@londonmarathonevents.co.uk

WESTCOMBE NEWS

ALL EDITORIAL CORRESPONDENCE TO:

Neville Grant, Editor
wnews@westcombesociety.org
Tel. 020 8858 8489
C0-Editor: **Frank Salmon**

ALL MATERIAL TO BE SENT TO: wnews@westcombesociety.org

Deadline for the May issue: 16th April
Environment Editor: Maggie Gravelle
Sub-editor: Annie Grey
Reporters: The community – that means you!

ENVIRONMENT COMMITTEE
Emily Norton All queries and comments to: 020 8853 2756
environment@westcombesociety.org

DISTRIBUTION Emily Norton and volunteers.

Volunteer distributors please phone 020 8853 2756, we need your help!

ADVERTISING MANAGER

Marilyn Little, 163 Westcombe Hill, SE3 7DP 020 8853 1312
Advertising@westcombesociety.org

All adverts payable in advance by cheque to **The Westcombe Society**.
DISPLAY: Single column 6cm x 6cm:
One - four issues £35, five-plus issues £30 each. Other sizes: please inquire.
Classified Ads (Market Place) 30p per word (A telephone number = one word. An email/web address = 3 words.) Deadline for all adverts is 10th day of the preceding month.

Printed by: Trojan Press

Contact the Westcombe Society:
WestcombeNews@egroups.com
Publisher: The Westcombe Society
Chairman: Marilyn Little Tel. 020 8853 1312

The views expressed in the Westcombe News are not necessarily those of the Westcombe Society or of the Editor. We take all reasonable precautions to protect the interests of our readers by ensuring as far as possible the bona fides of our advertisers but cannot accept any responsibility for them. Any complaints should be addressed to the advertiser.

*To access back-numbers (in colour) go to:
www.westcombesociety.org/westcombe-news/
Westcombe Society's Blog:
http://westcombe.blogspot.com*

WESTCOMBE SOCIETY MEMBERSHIP

Please send this membership form to:
Christine Legg, 69 Mycenae Road,
London, SE3 7SE

Name.....

Address.....

Tel.....

Email:

Please enclose payment as appropriate:

Family Membership	£12	[]
Individual Membership	£8	[]
Senior Citizens/unwaged	£4	[]

IT SUPPORT

For ALL your home & business needs
Call now for FREE advice

headstart
IT Solutions

020 8858 2002

www.headstart.it

Want an allotment? Ask the Council!



PHOTO: Neville Grant

Thanks, Richard Sylvester, for your piece last month on green spaces in our area, and the opportunities for volunteers and visitors to enjoy them.

But Richard forgot one green space – the allotments off Humber Road. These allotments must have looked just like this fifty years or more ago – unlike the concrete jungle emerging on the horizon. . .



Letters

Any views expressed are not necessarily those of either the Westcombe Society, or the *Westcombe News*.

From: Alan Weir

Coleraine Road's Ralph Weir (22) is one of what the media sometimes call the 'snowflake generation'. But as you read this letter, he is somewhere in Africa, on his heavily-laden bike, or in his tent.

With two University friends, Ed and Cal, he is tackling one of the world's toughest cycle routes - the 11,000 km Tour d'Afrique, Cairo to the Cape, taking in both Kenya in East Africa and Namibia in the West. All without motorised back-up. They are riding for Against Malaria Foundation, a widely-praised British charity. Mini- and Junior rugby at Blackheath, St Dunstons and Eltham taught him to relish a challenge and since September he has been earning locally to pay for this African attempt. If any of you had your Ghurka Inn meal delivered by a cheerful fair-haired Deliveroo rider with a rather bent nose, he's grateful for the work!

So far it has gone well. After the Red Sea coast section, he and his fellow riders, Ed and Calum, attacked their first really tough section - the Eastern Desert between the Red Sea and the Nile. 177 kms, mostly uphill, completed in a day with a police escort. They then rode south to Aswan and the ferry up Lake Nasser into Sudan.

By the time you read this (all being well) they will have crossed the arid wastes of the Nubian desert and pressed on into Ethiopia where the Roof of Africa awaits. – the toughest section before they hit the tropical heat of Central Africa.

The lads have been promised that every £1 they raise for Against Malaria will be matched, up to US\$30,000, by Sumitomo Chemical (UK). So donating to their appeal will generate twice the charitable benefit.

Malaria kills over 400,000 a year, mostly in the Sub Sahara and most under the age of five.

To support the Fund and give Ralph, Ed and Cal a boost, your donation can be made on the link below. It can be for any amount, by name or anonymously, and with or without a message. The donations page is attracting some real humorists, whose efforts the lads really appreciate, so do try your hand – every pound helps. Twice. The challenge they've taken on is, as one supporter put it, pretty Shackletonesque. They deserve our support.
<https://www.AgainstMalaria.com/m/AfricaNorthtoSouth>

From: Cllr Geoff Brighty

Last month's *WN* carried an item on fly tipping - a growing problem in many areas including our

own which the Council has to pay to clear from our streets and green spaces.

Croydon Council is introducing free bulky waste collection and we have been urging Greenwich to bring in a similar pilot scheme or, at least, to monitor the Croydon experience to see whether it is successful in reducing the blight of fly tipping and saving the council taxpayer money in the future.

From: Mary Mills Humber Rd

The Enderby Group report a busy time in their efforts to see Enderby House restored and its amazing heritage recognised. We have had a number of briefings from the Greenwich Council Conservation team on progress.

Sadly there will be several more closures of the riverside path in order to find space for the cycle path as well as to install essential services. We have also had briefings on art works likely to be installed in the area as part of the planning agreements for the site. We hope to be able to provide more news in due course.

CATS' CORNER

From: Sheila Ormell
Ingleside Grove

It seems that Cat Poems are now an important part of the *WN*'s letters page. Perhaps you would include "Who Owns Tabby?" in April.



Who owns Tabby?

We'd love to meet the owners
Of our tabby feline friend
Patrolling round the neighbourhood
Round every path and bend

When wandering up Hardy Road
The trees are getting bare
And leaves are falling on the street
But Tabby's always there.

Another day, try Beaconsfield Road
The rain has almosty gone
Who should we meet but Tabby cat,
Where once the sun had shone

We've glimpsed him in our garden,
We've caught him under cars
We've seen him in the sunshine
And when gazing at the stars.

I wonder if he's hungry
Our cat's plate's on the floor
But no food's ever left behind
If Tabby's at the door.

To de-activate our cat flap
He's been able once or twice
Then jumps up on the sofa
And curls up in a trice.

We've asked our neighbours round the block
"Who owns this precious pet?"
But nobody appears to know ...
We haven't met them yet!

Telling the story of the Heath

The Blackheath Society has been working for the past three years on a series of seven storyboards which will be placed at strategic points around The Heath.

Each board will contain information about the people, stories, flora and fauna associated with that area of the Heath. The board to the West of Vanbrugh Pits has been generously sponsored by the Councillors of the Blackheath and Westcombe Ward.

The Society will celebrate the launch of the storyboards at a gathering between 12 noon and 2 pm on Sunday 29th April. As well as launching the storyboards, there will be refreshments, entertainment and a small exhibition about the Heath. Look for the green gazebos between All Saints Church and Royal Parade and join in the celebration.

St George's, Glenluce Rd Westcombe Park

Sundays: 11.00 am Children's Church

11.00 am Holy Communion (All Age service 1st Sunday of each month)

Wednesdays: 8:30 am Morning Prayer

12.30 pm Fellowship Lunch

6.00 pm Taize Service - Christ Church, Trafalgar Road (4th Sunday each month)
Septics Group meets at 89 Westcombe Pk Road) 1st & 3rd Sunday each month

EASTER:

31st March: Easter Vigil service 8:00pm

1st April: Easter Sunday service 11.00 am

6th April 7.30 pm Free concert by the **Aeris Brass Ensemble**

Wed. April 18th. 7.30 at St George's:
Spiritual Film Night: *Demetrius and the Gladiators* (sequel to *The Robe*)

Contact: Rev'd Tim Yeager

rtyeager@gmail.com Tel. 07804 614 245



Boulangerie Jade is now in your neighbourhood.

Come in & enjoy our traditional French bakery offering lovely Breakfast and Brunch.

We also have amazing cakes for all occasions.

Come and visit us at 48 Vanbrugh Park from 8.00am to 6.00pm & 9.00am to 5.00pm on Sunday.

KNITATHON

5 April 2018

At Mycenae House

KNITTERS WE NEED YOU!

Join our KNITATHON in the Main Hall at Mycenae House on Thursday 5 April 10am-1pm, to raise awareness for Dementia Action Week (Monday 21 May - Sunday 27 May)

Appealing for knitters and crocheters to help donate pale blue wool and knit blue flowers for our project with [The Alzheimer's Society](#) and [Rectory Court Care Home](#).
We need hundreds of flowers!

If you cannot attend the knitathon knit for us anyway! Donations of pale blue (knitted or crochet) flowers can to be dropped into [Mycenae House](#). The pattern can be emailed to you, if required.

The flowers will be displayed in a secret public location locally and we hope to get media attention!

Mycenae House, 90 Mycenae Road
Blackheath Standard, SE3 7SF
mycenaeoutreach@gmail.com
020 8858 1149

LOCAL NEWS

Don’t chuck it out! says Ann Hill

The problems of landfill sites filling up, the pollution of our seas, and China ceasing to take our plastic waste, motivated us to think about the value of charity shops in recycling.

There are four charity shops in our area: Cats Protection, Greenwich & Bexley Community Hospice, and the Red Cross around the Standard, and Mental Health Activity Trust (MHAT) in Delacourt Road. We have surveyed the goods they take:

	Cats Protection	Greenwich & Bexley Community Hospice	Mental Health Activity Trust	Red Cross
Clothing, shoes, handbags, belts	✓	✓	✓	✓
Cutlery, crockery, pots & pans kitchen utensils	✓	✓	✓	✓
Jewellery, watches, mirrors pictures, vinyl records	✓	✓	✓	✓
Curtains, bed linen	✓	✓	✓	✓
Books, toys	✓	✓	✓	✓
Suitcases	✓	✓	x	✓
Small items of furniture, rugs	x	✓	✓	x
Larger items of furniture	x	✓	✓	x
Sports equipment	x	✓	x	x
Baby equipment eg prams	x	x	x	x
Radio, TV, stereos	x	✓	x	x
CDs	x	x	✓	x
DVDs, Blu Ray	✓	x	✓	x
Small unused electrical items	✓	✓	x	x
Printer cartridges	x	✓	x	x

Please remember that goods must be in a saleable condition and toys complete, otherwise the charity has to pay for their disposal. The exceptions are clothing, shoes, bags and belts which can be donated whatever their condition, because unsaleable items can be sold to textile traders.

Charity shops have important environmental benefits. According to the Charity Retail Association, 95 per cent of donated clothes are reused or recycled.

Consequently, over 332,000 tonnes of textiles were diverted from landfill in 2016/17, and CO2 emissions were reduced by an estimated 6.9 million tonnes.

Diverting clothing and other goods from landfill saves local councils over £27 million each year in landfill tax.

Many people use charity shops because they want to support the activities of the parent charity. Many appreciate the range of goods available, or are looking for vintage retro items, or a priceless Faberge egg or missing Rembrandt.

Charity shops are also popular because they offer good value-for-money. And surely everyone appreciates the many

volunteers who give their time in staffing the shops (and more volunteers are always welcome).

There are also other organisations in our vicinity that are busy recycling:

* **Emmaus Greenwich** (020 8854 3426) will arrange free collections of good quality furniture & other household items.

* **Men in Sheds** (020 8294 3012) offers a free repair service for furniture and small electrical items. They are having a Repair Café at Mycenae House on Wednesday March 21st, 10.30am -3.30pm.

* **The Freecycle Network** (www.freecycle.org) has branches in Blackheath and Greenwich where you can advertise online unwanted items for reuse.

* **Mumsnet** (www.mumsnet.com), has branches locally, & links members looking for items or offering them free or for sale.

* **GRACE** (Greenwich Refugee Aid and Community Enterprise, 07971690203) distributes clothing & bedding to refugees and the destitute locally and abroad. They also have a charity shop in Lee Green.

So there are many local opportunities to help other people while also reducing the impact of waste on the environment.

The future looks bright for Blackheath’s Night Life

The night-life of Greenwich is taking a turn for the better with a new project recently announced by the Peter Stringer Group of night clubs. The company plans to develop a new night spot on the edge of Westcombe Park, bringing new life into the area.

The *WN* has learnt that their proposal envisages converting the old public toilets in Blackheath Standard into an exclusive night club venue.

The underground toilets at the Standard are surprisingly capacious. They were closed in the 1980s, because of the largely undeserved unsavoury reputation they had acquired.

The plan – a huge recycling exercise, beloved of environmental groups – is to knock down the wall between the two sections of the toilets, remove most of the plumbing, and construct an exciting venue for local clubbers.

At street level, there would be a tasteful vestibule and reception area where the clubbers would be checked over, and in.

The proposal is backed by a number of local community leaders, who have long argued for more investment to improve the social infra-structure of Greenwich.

However, they foresee a certain amount of opposition from prudish Mrs Grundies who see such developments as possibly encouraging wickedness and vice.

In a recent statement to the press, a spokeswoman for Peter Stringer Inc., Ms Apryl Foole-Hardie, said:

“This is an exciting new proposal that could inject new life, and employment opportunities, into the local economy.”

She added: “As a former Trustee of the President’s Club, Mr Stringer has done a great deal for charity; he has a good track record as a well-known philanthropist and as such has philandered far and wide.”

If all goes through as planned, the Night Club, provisionally named Westcombe’s Stringers, should open on April 1st 2019. The Westcombe Society’s suggested title, “Mrs Grundy’s” is being considered, but it is thought Mr Grundy might object.

Drivers need to take more care

Research by the IAM (the Institute of Advanced Motorists) found that men are more likely to be involved in crashes because of bad driving habits than women. These bad habits included driving too fast and drink-driving.

It was found that men were nearly twice as likely to be involved in a collision due to being careless, reckless or in a hurry. The research also indicated that men are more likely to crash because of poor behaviour or inexperience.

Brake.org found that men account for 74% of road traffic deaths, 70% of serious injuries and 59% of slight injuries on the roads.

Not only that: 95% of convictions for deaths caused by dangerous driving are against men. Another interesting statistic is that the number of male drivers who were reported to have driven under the influence of alcohol or drugs was four times higher than the number of female drivers who admitted the same.



PHOTO: Neville Grant

An accident in February: anyone see it?
Worldwide, men account for 73% of all worldwide road traffic deaths – this is three times the rate for women.

There are several possible reasons for these statistics. One could be that men simply drive further. While women tend to travel more often than men, men travel greater distances.

In England, men travel an average of 7,200 miles per year compared to 5,800 miles that are covered by women. Men also drive around twice as many miles per year than women, as women are these days still more likely to travel as a passenger rather than a driver.

Greenwich Cruse Bereavement Care Walk and Talk Project

Bereaved people often become quite isolated, either by circumstances or not wishing to burden others. Bereaved full-time carers can also suffer isolation and low mood.

Greenwich Cruse has been working in partnership with Greenwich Get Walking (an initiative from the Royal Borough of Greenwich to promote fitness and healthy living) to set up a project to help bereaved people support each other by coming together for a stroll and a chat.

The group meets on alternate Mondays at The Stables, Hornfair Road, close to Charlton House, and then go for a gentle 45 minute walk, with two volunteers from Cruse, coming back for a chat and a coffee. It is informal and friendly. If you fancy joining in, please ring 8850 0505.

Whilst the walk was the main focus of the project, the session at the Café is clearly an important opportunity for people to talk and discuss aspects of their own bereavement and how they are coping.

Seeing complete strangers sharing their experiences and supporting each other is a rewarding experience. Some of the participants now venture out to the main Greenwich Get Walking programme which meets at various parks across the Borough.

This has led to increased self-esteem, socialising skills and confidence. Hitherto people who are not that physically active are also noting improved fitness as well as just enjoying the walk.

Feedback from the walks has been very positive and here are some examples:

“These sessions have enabled me to turn my life around and be open about my grief with people who understand and empathise.”

“It is a space to share thoughts and experiences and support each other.”

If you would like to join the group, or become a volunteer, please contact Tina Challacombe Chair Greenwich Cruse Bereavement Care on 020 8850 9429

In Memoriam

In March, Royal Greenwich launched its mass poppy seed planting community project to mark the centenary of the end of the First World War.

The project’s aim is to create a number of scarlet ‘ribbons’ of the poignant blooms in open land across the borough.

The programme is part of the Royal British Legion’s national Centenary Poppy Campaign.

The borough’s parks staff have earmarked a number of locations to start the planting, but residents are being asked to advise the Council of any other suitable sites.

Sites so far identified include the Shooters Hill Estate, the Meridian Estate, Blackheath Standard and Little Heath in Charlton.



Constantine the Great and Christianity in Roman Britain

A program by Dr Sam Moorhead FSA (British Museum)

In AD 306, Constantine was acclaimed Roman emperor at York, a turning point in world history. This lecture will outline Constantine’s rise to power and his adoption of the Christian faith, culminating in the Battle of the Milvian Bridge in AD 312. After the Edict of Milan in 313, which ended the persecutions, we witness the growth of Christianity in the Roman Empire and in Britain. The British Museum has the best collection of fourth century Christian objects north of the Alps. Using such treasures and a range of other archaeological evidence, this lecture will outline the rich Christian heritage of late Roman Britain.

Sam and his family are members of St George’s Church. Come and learn! Refreshments provided. Free and open to the public.

Tuesday, 8th of May - 7:30 pm

STGEORGE’S
WESTCOMBE PARK

Glenluce Road, Blackheath SE3 7SD
www.stgeorgeswestcombepark.org.uk
Rev’d Tim Yeager, Team Vicar 07804 614245 rtyeager@gmail.com

EASTGREENWICH
CHURCH OF ENGLAND TEAM MINISTRY

FEATURES

Morden College

BROOKS JACKSON, a resident of Morden College, tells the story of this famous Blackheath landmark





Born in 1623, Sir John Morden was a merchant, and a member of both the Turkey (Levant) Company, and of the East India Company. From 1669, with his wife, Dame Susan, he lived at Wricklemarsh Manor, Blackheath.

At this time, most of Greenwich was farmland, and Sir John bought up much of it. He became a very wealthy man, but as he and his wife Susan had no children, he decided to build Morden College to provide accommodation and support for merchants like himself, but who had fallen on hard times through no fault of their own. Originally, they were single, either widowers or bachelors; of a minimum age of 50 years, and members of the Church of England..

Built between 1695 and 1700 in the style of Wren the college was a quadrangle with

40 apartments; there is a chapel on the east side, opposite the main entrance. Today, the college covers around 14 acres, tucked away behind leafy trees south east of the heath. The college is now very much larger, with over three hundred residents of both sexes; around two-thirds of the residents are women.

The beautiful landscaping and stunning buildings cannot be seen from outside the entrance gates and is a surprise to most people when they come to the top of the drive and enter the college.

The revenue to maintain the college is largely derived from the endowment thoughtfully planned by John Morden.

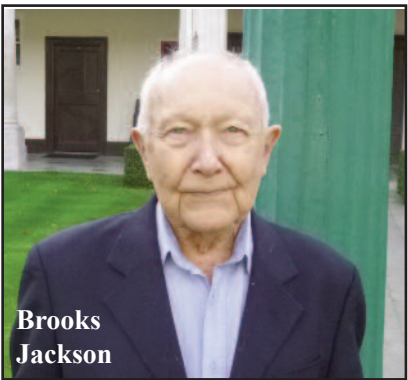
The residents come from a wide range of backgrounds and is a community of interesting people drawn from many walks of life.



PHOTOS:
Neville Grant

There is a range of hobbies, interests and activities continuing throughout the year, as well as a coach used for shopping at the local supermarket and outings in the south-east area. The College employs a very dedicated and capable staff.

The many facilities in the college include a well-stocked library, a cafe, a bar, a games room, a computer centre, a croquet lawn, an art and crafts workshop which is always busy – and extremely beautiful and well-maintained gardens.



Brooks Jackson

Right:
A keen creator of dolls' houses in the arts and crafts workshop.



Below, left:
Have bus, will travel





Beverley Morris & Co.

SOLICITORS



- Family Law
- Litigation and Employment Law
- Residential / Commercial Conveyancing
- Lease Extensions

- Planning Law
- Collective Freehold Purchases
- Wills / Administration of Estates
- Lasting Powers of Attorney

www.beverleymorris.co.uk
020 8852 4433 enquiries@beverleymorris.co.uk

35 Montpelier Vale, Blackheath Village, London SE3 0TJ
Ground floor offices. Adjacent to Montpelier's delicatessen


62 Lewisham High Street, London SE13 5JH
Close to Lewisham DLR and train stations

BUILD & CREATE



CONSTRUCTION LTD

BE INSPIRED AND BUILD

Extensions and refurbishments



buildandcreate.co.uk
clinton@buildandcreate.co.uk
0796 1089012 0208 305 2184

Proud members of




WHAT'S ON



ARTS

GREENWICH DECORATIVE & FINE ARTS SOCIETY K. William Court, Univ. of Greenwich
14th May UNDRRESSING ANTIQUES by Mark Hill. "The state of the antiques market and the word "value" are considered, and we take a look at what current and future generations of collectors are buying, why they are buying it and how they are displaying it." Visitors please pay on the door
THE ARTS SOCIETY, BLACKHEATH
Thurs. 26th Apr Raymond Warburton 1932: Pablo Picasso's Year of Wonders - and much more besides 2.00pm. with tea and coffee, and lectures at 2.30. Venue is St Mary's Church Hall, Cresswell Park Blackheath. Visitors welcome, please pay on the door.

CHILDREN & FAMILY

MYCENAE HOUSE
Wed 4th - Fri 6th April 9.00am - 3.00pm - Music Maestros. Three day holiday music course at Mycenae House for children 7+, £90 for three days, book via info@thefuturemusicgroup.co.uk

BLACKHEATH HALLS 23, Lee Rd. Blackheath SE3 9RQ 0208 463 0100 www.trinitylaban.ac.uk
Sat 14th April 3.0pm CAPTAIN CAULIFLOWER & THE MARVELLOUS MOOSE Chaotic fun that's suitable for the whole family!
TICKETS: £8.50 Ages 3 - 8 years
Sat 2st April 2 & 5.00pm MARK THOMPSON'S SPECTACULAR SCIENCE SHOW £12.50 - £10.00 for children. Suitable for ages 7+

GREENWICH THEATRE CROOMS HILL
Sat 31st March / Sun. 1st April 5.00pm Sat, 11.00am & 2.00pm Sunday THE SNOW BEAST £13.50 cones 11, Children & 8.50 Ages 7+
Moin 2nd April 2.00pm ME AND MY BEE £13.50 cones £11, Children £8.50 Ages 5+
Fri 6th - Sat 7th April 11.00am & 2.00pm GRANDAD'S ISLAND Tickets £13.50 cones £11, Children £8.50 Ages 5 - 8
Tues 10th April 1.00 & 3.30 pm YIOU'VE GOT DRAGONS £13.50 cones 11, Children & 8.50 Suitable for all ages
Sat 14th April 2.00 & 5.00pm THE SELFISH GIANT £13.50 cones 11, Children £8.50 Ages 3 - 7
Sun 15th April 2.30 pm THERE WAS AN OLD LADY WHO SWALLOWED A FLY £11, Children £8.50 Ages 2+
Sun 29th April 11.-- am 1.00 & 2.00pm WHERE'S MY IGLOO GONE? £11, Children £8.50 Suitable for whole family

SHERINGTON CHILDREN'S CENTRE, Tel. 0208 - 3053140 - 14, Sherington Road SE7 7JW
DAD'S STAY AND PLAY session every Wednesday, 1.00pm -2.30pm -free drop in Sherington Children's Centre, all home dads welcome Each 2nd Saturday of the month - 10.00am -11.30am - free brunch/arts and craft Contact Daniel.hall1985@hotmail.co.uk for more details, www.selondondads.org.uk

SPOKEN WORD

BLACKHEATH HALLS 23, Lee Rd. Blackheath SE3 9RQ Box Office: 0208 463 0100
FRI 20 APR 7.00pm at The Old Bakehouse Theatre:
JULIET GARDINER: JOINING THE DOTS Britain's leading social historian looks at the changes to women's lives since 1940 £10.00
INDUSTRIAL HISTORY SOCIETY
at The Old Bakehouse, Age Exchange, Bennet Park.
24th April 7.30 Ian Bull THE YANTLET The Royal Arsenal's Forgotten Out Station
IN-WORDS
April 17th. at 7.15 for 7.30 Graham Fawcett's next lecture/performance is on **Walt Whitman** at **St Margaret's Crypt, St Margaret's Church, Brandram Road, Lee SE13 5EA**
Visit www.in-words.co.uk for more information.

THE WESTCOMBE SOCIETY

Sat 14th April 2 - 4.00pm Queen Elizabeth's Birthday Tea for Senior Citizens
Mon. 16th April 2028 Council election HUSTINGS at St George's Church
Friday, May 11th AGM 7.30 BHSG
Sat June 30th Summer Picnic Mycenae Gardens
Fri 28th September - MacMillan Coffee Morning, Mycenae House
Fri 16th November - Quiz 7.30-10.30pm Main Hall, Mycenae House
We needs more volunteers to help out at community events being planned for 2018. Interested? Please ring Joanne on 07709 571777

COMMUNITY

BLACKHEATH & GREENWICH WOMEN'S INSTITUTE Meets first Wednesday of every month, doors open at 7.00pm for 7.30pm at Sunfields Methodist Church on Old Dover Road
GREENWICH UNION PUB (MEANTIME) READING GROUP Reading group first Wed. of each month. Read - Discuss. Contact: Barbara Ward ward.barbara@mac.com 07960 107578 Free
BLACKHEATH BRIDGE CLUB duplicate sessions in Mycenae House Mon & Thurs 7.15pm and on Wed at 1.15pm. Lessons Tuesday pm. Tel. Ron 8319 1312
CHARLTON HOUSE www.charltonhouse 0208 856 3001 Mulberry Tea Rooms
Jacobean Entrance Hall Mon-Fri 9am- 4pm
Lunchtime concert every Friday 1.00pm - 2.00pm
SUNDAY AT SUNFIELDS at Sunfields Methodist Church 95 Old Dover Road, Blackheath SE3 8SJ 1.00 - 4.00 pm A new group welcoming ALL older people and their carers to join us for lunch and light-hearted activities, including reminiscence, arts and music. we are experienced in supporting those who may have extra needs due to health conditions like arthritis, dementia or strokes etc. Carers are also invited. Sundays at Sunfields is provided free; please do just come along - there is no need to book. FREE

THEATRE & OPERA

THE GREENWICH THEATRE, Crooms Hill, London SE10 8ES Box Office: 8858 7755
Tues 13th April 7.30pm TESTOSTERONE Kit has transitioned from female to male. Watch this space! £16 | cones £13.50
Thurs. 12th April 7.30mp NOTFLIX the sell-out comedy musical. £16 | cones £13.50
Fri 12th April 7.30 pm WE ARE THE LIONS Mr. MANAGER The Grunwick Strike £16 | cones £13.50
Thurs 19th - Fri. 20th April 7.30pm A BRAVE FACE Afghanistan 2009 - and post traumatic stress disorder £18.50 | cones £16 Ages 12+
Tues 17th April 7.30pm William Shakespeare's MACBETH £16 | cones £13.50
Wed 25th April 7.30pm DAD'S ARMY RADIO HOUR £16 | cones £13.50
Thurs 26th - Sat 28th April THE WAR OF THE WORLDS Rock meets Sci-Fi. £16 | cones £13.50

BLACKHEATH HALLS
FRI 06 APR 14:00h CHILDREN'S OPERA: NOYE'S FLUDDE 2018
GREAT HALL, BLACKHEATH HALLS
The Multi Story Orchestra and Blackheath Halls Opera present Benjamin Britten's most famous opera written for community performance.
Tickets £12.00 | ££6.00 for children under 16

MYCENAE HOUSE LIVE EVENTS: APRIL

MYCENAE HOUSE, Mycenae Road SE3
Thurs 5th April 10am-1pm - Knitathon in aid of Alzheimer's Society. Come and knit/crochet Forget Me Knots to raise awareness of Dementia Action Week. Free
Fri 6th April 7pm - Global Fusion Music & Arts. An evening of music, theatre and poetry to mark the 50th anniversary of the death of Martin Luther King. £7
Fri 13th April 8pm - JazzNights. Dave Silk's Candlit Live Jazz music event featuring violinist Jeff Moore. £10.
Fri 20th April 7pm Gordon Giltrap. Global Fusion Music & Arts present one of the best acoustic guitar players in the world. £12
Thurs 26th April 4pm - Bach To Baby. Classical Concert for families. £10.
Fri 27th April 7pm - Mycenae Soup. Fundraising evening supporting local community projects. £10 min. suggested donation.
For further information visit www.mycenaehouse.co.uk

Is education happening?

Yes. But not with the intensity needed today. Schooling is stuck in a rut which seemed to make sense in the 1980s, but now everything is twenty times more complicated, and the system is not responding. Parents need to help their children - using the internet - to see the big picture in every area of the curriculum. This easily gets lost in the constant pressure to cram for exams. Children need to work, and seek help, to *really understand* their topics, not simply swallow them to get by.

The P E R Group's website: www.perprospero.co.uk

SPRING FAIR

29TH APRIL 2018 2:00-5:30PM

St Nicholas Church Hall, Church Lane, Chislehurst, BR7 5PE

COME JOIN THE FUN & BRING THE KIDS!

Admission £1 + Children free

Raffle prizes

Kid's games

Food

Refreshments

Clothes & Jewellery

Beauty therapy

Treatments

www.btf.bv/chislehurstbazaar

MUSIC

BLACKHEATH HALLS 23, Lee Road SE3 9RQ 0208 463 0100 www.trinitylaban.ac.uk
FRI 20 APR 8.00pm
THE ICARUS CLUB ACOUSTIC CONCERT
RECITAL ROOM, BLACKHEATH HALLS
A night of incredible acoustic music featuring 3 of the artists from this popular South London club
Tickets £12.00
MON 16 APR 13:10h LUNCHTIME RECITAL:
MYRAMAE MENESES, RENE FAJARDO,
MARK BAUTISTA & NATALIE BIRCH
RECITAL ROOM, BLACKHEATH HALLS
Songs from the Philippines
FRI 11th May at the **THE OLD BAKEHOUSE**
LUNCHTIME RECITAL: NAOMI QUANT & MARCO BELLUZI perform Benjamin Britten's **On This Island Op.11** Free with retiring donations

WOODLANDS FARM TRUST

331 Shooters Hill Welling DA16 3RP
Tel: 8319 8900 EASTER HOLIDAY EVENTS:
Friday 30th March (Good Friday) Egg-cellent Easter Trail 10.00am - 2.00pm Find all the different Easter Eggs and Spring Animals hidden around the farmyard - and win a chocolate Easter Egg! Drop in any time between 10.00am and 2.00pm. £2 per child
Tuesday 10th April Rainbow Scavenger hunt 1.00pm-3.00pm See if you can find all the colours of the rainbow and use them to make a picture to take home. You may even spot some lambs as well. Drop in any time between 1.00pm-3.00pm. £2 per child.
Wednesday 11th April Gruffalo Day! 10am-12pm and 1pm-3p £5 per child, accompanying adults free. Search for a gruffalo! This activity will involve a walk into our woods (about 20 minutes) and not suitable for buggies. Essential to book.
Lambing Day Sun. 15th April 11.00 - 4.00pm Come and see our new-born lambs, and enjoy quality local produce at reasonable prices, including home-made preserves and cakes. Relax in our café, enjoy the treasure hunt or get involved in craft activities. All proceeds go towards keeping the Farm as a conservation project and valuable resource for the community. £2 adult, £1 children er 16, £5 Family Ticket (2 adults & up to 3 children). No parking. Buses 89 & 486 Sorry, no dogs.

J K Auto Services

All makes of vehicles serviced

Saab Specialist

Tyres & Exhaust Fitting Service

Air Conditioning Re-gas & Servicing Facilities

Unit 52, New Lydenburg Industrial Estate, New Lydenburg Street, Charlton SE7 8NF

Tel: 020 8293 1511



TROJAN PRESS

Printing in Blackheath since 1978

FROM YOUR IDEAS OR ARTWORK WE CAN PRINT AT A REASONABLE COST:
· BUSINESS CARDS
· INVOICES · LETTERHEADS
· BOOKS · BROCHURES
· FORMS · INVITES
· WEDDING STATIONARY

Ia Lizban St
Blackheath, London SE3 8SS
Tel: 020 8853 2268

Email: dave@trojanpress.co.uk
www.trojanpress.com

R.G. Austin

(Established 1963)



Heating Engineers,
Property Maintenance,
Electrics, Painting,
Decorating, Plumbing,
Central Heating,

GAS
SAFE

Shower and Bathroom Specialists

2A Hassendean Rd, Blackheath SE3 8TS
Telephone: 0208 858 7359
rgaustin@fsmail.net

AGE EXCHANGE

Sat April 14th Art & Craft Sale Bakehouse Theatre 10.00 am - 4.00pm Sale of goods by local artists and makers
Book sale in Bakehouse Bookshop.
Fri 27th April Free Lunchtime concert in Bakehouse Theatre. Trinity Laban students perform. Retiring collection.
Sat 28th April Annual Friends of Age Exchange QUIZ at Kingswood Halls, Kingswood Place SE13 5BU £15.00 | £12.00 for Friends Advance booking essential Teams - max. 8 people Light supper. Raffle.
www.age-exchange.org.uk



Learning is fun

St Olave's is a Prep School in New Eltham for boys and girls aged 3-11 years

- Broad, child-centred curriculum
- Excellent results in the 11+ selection
- Clubs, outings and residential trips
- Excellent pastoral care
- Small classes
- Specialist staff for PE, IT, Music, French and Drama
- Sibling fee reduction
- Before and after school care

Tel: **020 8294 8930**
www.stolaves.org.uk



WRISTWORTH HEATING & PLUMBING

Installation - Servicing - Repair

Tel: 07725 008380

Email: wristworth@hotmail.co.uk

GAS safe REGISTER

Check Out Our NEW Website: wristworthheating.weebly.com

JAMES REMOVALS

excellence through effort

.com

● Fully trained uniformed staff

● Full insurance included in ALL quotes

● Prompt free estimates

● On-site containerised storage

● Discounts for long-term storage

● Well-established family business

● Pianos - our forte

Call **0800 015775** for a free survey or visit jamesremovals.com to request a quotation online

FEATURES

Pet Hates

Recent research found that 3.7 million Brits commute for two hours or longer each weekday and spend an average of £48,000 in their lifetime on commuting.

Most of the time, jumping in the car or taking public transport is pretty painless. But every once in awhile, your experience makes you question why you do this each day. With this in mind, OSV asked over 600 commuters what frustrates them most on their journey and created an infographic to show their findings.

The research found that public transport commuters are most annoyed by habits of their fellow commuters. Predictably, car commuters are most annoyed by people's driving skills, or lack of.

Public Transport Pet Peeves

Those passengers that push on without letting people off first are the most hated, with 30% of public transport commuters putting them top of the pet peeve list. Leaving rubbish on public transport is another commuter no-no, with 18% citing it as their biggest bugbear. 17% of public transport commuters despise passengers that play loud music and 15% are angered by those passengers that cough and sneeze without covering their mouth.

Other irritating habits include those commuters that strike up loud conversations people that eat, and smelly or abusive passengers, crowds and loud children.



www.osv.ltd.uk

Car Commuter Pet Peeves

27.8% of drivers admit that those people that use their phone whilst behind the wheel are the most annoying. This is closely followed by being stuck in traffic, with 27.2% explaining that this was the most frustrating element of their commute.

14.7% of people detest other drivers that forget to indicate and 13% of car commuters dislike fellow drivers that drive below the speed limit.

Other annoying habits include those drivers that hog the middle lane, harsh brakers, tailgaters, and sharing the roads with tractors and clusters of buses (try Elephant and Castle!).

"After spending so much time and money on commuting, it's not a surprise that certain habits and behaviours can test people's patience", said Debbie Kirkley, OSV's Co-Founder.

"But, next time you feel frustrated with your fellow commuters, just remember that it's likely that every other commuter feels the same way as you do."

Ed: What do our readers think? Let us know!

All go at the Albany

The Albany Centre in Deptford has had a busy year so far, and its very full programme continues in April with the following, guaranteed to stir, if not shake!

ALULA CYR presents HYENA

Hyena explodes onto the UK circus scene in a whirlwind of women, wheels, dance, acrobatics, and song. Made by an all-female production team, boisterous, playful and wild, HYENA is a synchronised display of sisterhood, strength and power. Part of Roundhouse CircusFest.

Thursday 12 & Friday 13 April, 7.30pm.

£14 / £10. Ages 12+

LIZ AGGISS presents Slap and Tickle

Created and performed by Liz Aggiss Slap and Tickle is an award-winning, dark and ribald physical commentary on social mores and sexual taboos. Aggiss creates a feminist soup that lurches from spoken word to expressionist movement, from music hall to radio nostalgia, from costume change to prop manipulation.

Tuesday 10 April, 1.30pm & 7.30pm. £14 / £10 concs. Ages 18+

CHERYL MARTIN PRESENTS

Who Wants to Live Forever?

Written and performed by Cheryl Martin. Directed by Darren Pritchard.

A show about one woman's life-long love for Billie Holiday's music, for the stars, and for her lost baby brother. **Who Wants**

To Live Forever? is about camping holidays and friendship; about loss and memory, and turning memory into myths of Amazon princesses sailing the skies.

Wednesday 18 & Thursday 19 April, 7.45pm. £12 / £10 concs. Ages 14+.

PROTEIN presents BORDER TALES Created by Luca Silvestrini.

The award-winning company Protein presents a thought-provoking yet poignant commentary on multicultural Britain through dance, live music and dialogue compiled from the performers' personal experiences. **Border Tales** looks at post-Brexit Britain seen through the eyes of an international cast and gazes satirically on stereotypical thinking about 'migrant outsiders' and 'bigoted homelander'.

Thursday 19 April, 7.30pm. £14 / £10 concs. Ages 12+. With a post-show talk

CARDBOARD CITIZENS presents CATHY By Ali Taylor

Exploring homelessness 50 years on from Ken Loach's seminal film *Cathy Come Home*, Cathy is candid, poignant and intimate. It offers an insight into the social and personal impact of spiralling housing costs, gentrification and the challenges of forced relocation away from London.

Tuesday 1 – Saturday 5 May, 7.30pm, Matinees Tuesday 2pm & Saturday 3pm. £14 / £10. Ages 14+.

Followed by an interactive Forum

New Talk about ART

highlighting Victorian rebellion

John Bartram

Talk about Art launches its second 2018 exhibition in April with a show highlighting artists who broke the mould and changed the way the way we look at art.

Talk about...Art & Victorian Rebellion runs in partnership with the Good Shepherd Catholic Primary School

This exhibition explores the work of three rebellious art students who decided to develop a new controversial approach which would shake up the art world for the rest of the 19th century - Dante Gabriel Rossetti, John Everett Millais and William Holman Hunt.

These artists tackled subjects in new, thought-provoking ways and had an impact on our visual world that is still seen today.

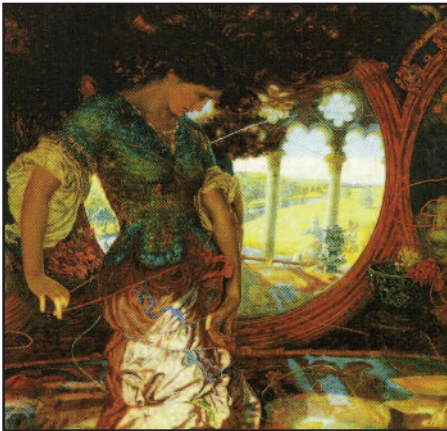
Visitors can explore the exhibits with the augmented reality footage and access additional information through QR codes. Free school workshops for up to 30 pupils are offered, run by two TAA artists and looking at the influence of these Pre-Raphaelite painters.

They provide an overview of the Pre-Raphaelite Movement – and participants will have the chance to make their own rebellious art, too!

To book workshop places please email: Marilyn.Moore@lewisham.gov.uk



Rossetti: Beata Beatrice (detail)



Hunt: The Lady of Shalott (detail)

Talk About Art was launched in 2015 because it believed financial, social and cultural challenges were preventing mainstream education from providing children with creative engagement with art and the range of life skills needed

TAA aims to promote the visual arts across the Borough of Lewisham, particularly amongst children and teenagers, by involving local schools closely in its work. Its other partners include Lewisham Council and Library Services, The Arts Society, GLA, the Peter & Teresa Harris Trust, Youth First, Bellingham Regenerational Arts Group, Lewisham Education Arts Network and Arts Award.

This free, family-friendly, exhibition runs from April 16 to May 5 at the Downham Health & Leisure Centre, Moorside Road, Bromley. Monday to Friday 8am - 10pm, on Saturdays from 9am - 5pm and Sundays 10am - 4.00pm. It is TAA's sixth exhibition and a further show called Talk about...Art Connecting Cultures is planned in June at Lewisham Central Library.

Beyond the Suffragette

A hundred years ago, women – some women – got the vote for the first time. To mark the centenary, the University of Greenwich has created a travelling exhibition. It will be on show during opening hours in the following venues:

Blackheath Library Old Dover Road, SE3 7BT
Greenwich Centre Library 12 Lambard Square, SE10 9GB
West Greenwich Library Greenwich High Road, SE10 8NN
Charlton House Charlton Road, SE7 8RE
University of Greenwich TBC
Severndroog Castle Castle Wood, SE18 3RT



30 March – 12 April
13 April – 3 May
4 May – 17 May
18 – 31 May
1 - 14 June
15 – 30 June

Susan Clark Interiors



Complete renovation to Decoration
Construction, Project Management
Interior Design, Kitchens & Bathrooms
Bespoke Curtains & Blinds, Joinery, Upholstery, Furniture, Gifts, Cards
Tel. 0208 305 2299
www.susanclarkinteriors.com

JOHN DANN FURNITUREMAKER - EST. 1984

High quality bespoke fitted and freestanding furniture made to your requirements. Repair and restoration work also undertaken.

E-mail: johndann93@gmail.com
Website: johndannfurniture.co.uk
Tel. 0208 852 3047 or 07837 859763

Grant Saw Wealth Management Limited

INDEPENDENT PERSONAL and CORPORATE FINANCIAL ADVISERS
Investments - Pensions - Estate Planning

2 Charlton Road. Blackheath Standard
London SE3 7EX (T) 020 3417 9760
email: enquiries@gswealth.co.uk
website: www.gswealth.co.uk

HELPING YOU PLAN YOUR FUTURE
Grant Saw Wealth Management Ltd. is authorised and regulated by the Financial Conduct Authority





Planning applications can be viewed in the library, or at the Woolwich Library on the lower ground floor of the Woolwich Centre, 35 Wellington St. They may also be viewed on www.greenwich.gov.uk/planning

Going solar: the facts

Within a few years, the government expects power to become the second cheapest form of electricity in the UK.

A recent government report compares the costs of future energy sources. It was found that solar could beat conventional gas systems by large margins.

Strangely enough, winter can be the best time to switch to solar power. This is because solar panels generate electricity from light, not heat, so colder temperatures do not mean that solar panels will produce less electricity.

In addition, some recent advances in photovoltaic cells technology mean that they are more efficient than ever before.

Oddly enough, hotter temperatures can prevent the photovoltaic cells in solar panels from working as well. Cold, sunny winter days are optimal for solar energy production. So there is no better time than now to think about switching to solar.

Not many people know the government provides cash incentives for people who switch to solar. People who install solar panels receive financial benefits through the 'Feed In Tariff' scheme. Once you

install your solar panels, you 'lock-in' your guaranteed payments for the next twenty years, regardless of what happens to energy prices in the future.

The 'Feed In Tariff' scheme means that you even get paid for the energy you use yourself, which is essentially like being paid for putting the kettle on.

There is just one problem: at any point, the government could scrap the 'Feed In Tariff', and so the financial benefits of going solar could disappear overnight.

So quite apart from the environmental advantages, the benefits are, in sum:

*** Electricity bills are slashed:** Sunlight is free!

*** You get paid for the energy you generate** – The Government's scheme will pay you for the electricity you generate, including the energy you use yourself.

*** the surplus energy you generate goes back to the grid:** meaning a credit on your bill. In effect, you sell what you don't use *To work out how much you could save, visit Eco-Experts.co.uk, which claims to be the country's No. 1 Solar Panel comparison website*

More affordable homes on the way

Government legislation has imposed serious restrictions on local government borrowing for residential buildings – though oddly these restrictions do not apply for commercial developments.

This means that the council has been hampered in fulfilling its commitment to building genuinely affordable homes.

It was for this reason that the Council set up Meridian Home Start (MHS) as a Community Benefit Society. MHS operates fully independent of the Council, is free from restrictions on borrowing and is thus able to maximise the opportunity to utilise Right To Buy receipts to reinvest in housing for the benefit of residents.

Cllr Danny Thorpe, Deputy Leader and Cabinet Member for Regeneration & Sustainability, said: "Meridian Home Start can access funding streams that are not available to the Council to increase the supply of homes for residents in the borough. This is just one of the ways we are following through on our commitment to provide more affordable homes in the Royal Borough."

The Council has now approved plans to

transfer three additional sites across to Meridian Home Start and has agreed a loan facility that will build one, two, three and four bedroom properties available at affordable rents to local people.

This is in addition to the three sites already transferred across to Meridian Home Start. Work recently started on house building on the first site in Rochester Way. When construction is completed in May 2019, it will provide 29 new affordable homes to rent in Eltham.

Planning is advanced on the two other sites being developed by Meridian Home Start at Sandpits Place, SE7, and Carnbrook Road, SE3 with these three sites creating 98 affordable homes in total.

The three new sites to be transferred, at Fred Styles House in SE7, in Shepherds Leas, SE9 and on Vincent Road, SE18, will increase the number of new affordable homes created to an estimated 206.

*** 1,949 social-rented homes have been lost through estate regeneration (Woolwich & Kidbrooke)**

*** 16,000 are on Greenwich's housing waiting list**

The sky's the limit for Meyer Homes

WN reporter

Developer Meyer Homes wants to build this 27-story tower block on the green space in front of Woolwich's Tesco store.

There would be another three blocks of between nine and 16 storeys behind the store on the main Love Lane development.

The proposals would provide 804 flats in total. Of these, 20% would be "affordable – a mix of discounted market sale (a form of shared ownership) and London Living Rent (that is, two-thirds of market rent).

"Affordable" means that the dwellings could only be afforded by perhaps 10% of the population.

The development would also allow for



zero – yes, zero, social housing.

Comments Greenwich and Woolwich MP Matt Pennycook: "An entirely private 27-storey tower with a few 'affordable' units overlooking Grand Depot Road/the South Circular is absolutely unacceptable."

He added: "Meyer Homes should go away and come back with an improved scheme."

Not surprisingly, the proposals are regarded as extremely controversial. A decision by Greenwich's planning board is expected soon.

March 5th: "The Beast from the East" arrived - not as beastly as expected. But the rest of March was unseasonably cold.

St Johns Park in the snow - the Gibb Memorial in the distance.

PHOTO: Vesna Domany Hardy



Who should foot the bill?

Following the horrific Grenfell Tower disaster in June last year, two private freehold developments in West Greenwich failed cladding tests: New Capital Quay, and the Babbage Point development on Norman Road.

A subsidiary of Galliard Homes, Roamquest Ltd. is trying to pass on to the 658 leaseholders and shared owners on New Capital Quay the full costs of providing interim safety measures and carrying out remedial fire safety works.

The bill could run into millions of pounds: that could amount to tens of thousands of pounds for each householder.

Galliard argues that it was "fully compliant" with the building regulations at the time the development was completed, and that the building was signed off by an approved inspector. Galliard therefore maintains it should not be held liable for the fact that it is now not compliant. The leaseholders are naturally very worried.

They are right to be: flat owners in Citiscape, a 95-apartment building in Croydon, may be billed for more than £20,000 each for repairs following a tribunal ruling that they were responsible for the costs of replacing Grenfell-style cladding. The tribunal's judgment does not set a legal precedent – but there are at least 130 apartment blocks in the country that face similar problems.

Local MP Matt Pennycook has raised the issue with the Housing Minister.

He comments: "Leaving aside the technical and legal complexity, it cannot be right that the hundreds of leaseholders and scores of shared owners on New Capital Quay, who bought their properties in good faith and bear no responsibility whatever for failures in the building regulations regime, get clobbered with these costs."

So, who should pay?

Those who drew up the old building regulations, perhaps?



Short-term Care*

At Leah Lodge and Rectory Court
Care Homes in Blackheath, London



If you are looking for flexible, short-term care Leah Lodge and Rectory Court can provide a well earned break for carers and family members

Ranging from a 2-week minimum stay – up to 6 weeks, our beautiful en-suite rooms, 24-hour care and safe and warm environments give total piece of mind.

For more information call our friendly teams at:

Leah Lodge Rectory Court
0208 318 2272 0208 297 5860

*subject to a care assessment to ensure individual care needs can be met.

www.cinnamoncc.com

SPECTRUM

Painters & Decorators
Interior/Exterior
No job too Small
Clean and Reliable

Free Estimates
30 Years Experience

020 8853 2759 or 0795 0815412

A & A LANDSCAPES Landscape Specialists



Free advice &
estimates



Qualified
horticulturalist

All aspects of soft & hard landscaping
work carried out including

* Maintenance * Site clearance
* Turfing * Tree surgery
* Fencing * Patios
* Brickwork

Tel. 020 8318 2530

MARKET PLACE

PLANNING APPLICATIONS

See <http://www.westcombesociety.org>
149 HUMBER ROAD ref 18/0668/CP
Loft conversion with rear dormer window and Juliette balcony, and two front roof lights
111B MYCENAE ROAD ref 18/0877/TC Tree works: Fell mimosa

ACCOMMODATION

GOOD RELIABLE HOST FAMILIES wanted for foreign students. For more info. please contact Lynne on 01732 822649 or email sesgreenwich@aol.com

ROOMS FOR HIRE

FUNCTION ROOM FOR HIRE

Blackheath area, up to 150 people, Bar, disabled access. Tel 07940 296290
TO LET - Royal Hill, SE10 Office in Linear House and The Greenwich Gallery building. 362 sq ft, friendly atmosphere, brilliant transport links. Contact tanyothen@gmail.com. 07956 456647

HOLIDAYS

WHITSTABLE WEEKENDS / WEEKS Sea wall house between Oyster Warehouse and Harbour. Sleeps 5. Fantastic views. 8858 6578 or 013 04 367443

PERSONAL CARE & THERAPY

DEEP EMPATHIC COUNSELLING

Offered by 2 experienced BACP accredited lady counsellors. Please call:020 8858 5969 or email:bhhs@selondon.co.uk

BABYSITTER: GCSE - YEAR 11 STUDENT available £6.00 per hour. Bookings: 07946 530053 References Available

SERVICES & TRADE

HOMEWORKS

All-round handyman for those DIY's you have no time for! General repairs. Painting & Decorating. General Carpentry and flooring. Flat-pack assembly. Patio and deck cleaning. No job too small. Contact Matthew Barron 07903 388658
C.S. CARPENTRY-JOINERY Decorating and all building work undertaken. Joseph McNamara 8857 5480, mob. 07947155366

S.S.D BUILDERS LTD.

Long established Building & Roofing Company available for free estimates & advice. ALL works undertaken, from guttering to Refurbishments. All works viewed within 24 hours, fully insured & new work is guaranteed. Call us today on 07931 536533 or 0208 305 1039 ssdbuilders2@hotmail.com

TOM ELLIS BESPOKE CARPENTRY

Alcove bookcases, cabinets, wardrobes and window seats. M. 07510 869 947

CLEANER AVAILABLE, efficient and reliable hourly rate £12.50 Thursday & Friday. Kasha 07535405792

PHONE/BROADBAND SOCKETS.

Improved Broadband speed plates, Fault Finding Repairs, New Extensions, Tidying of cables. 25 yrs BT, Insured. 07845 705900



Gartel Design & Construction Ltd.
Est.1975

Extensions/Orangeries

Brickwork/Block Paving

Driveways & Patios

Roof Works/Painting & Decorating

www.gartel.co.uk 0208 858 5123



Eltham Executive Charter Ltd
Quality Mini Coach Specialist



16,29 Seater Minicoaches
Premium 12, 24 & 36 seater Minicoaches with WC & faculties

T 020 8850 2011
E enquiries@eec-minicoaches.co.uk W www.eec-minicoaches.co.uk
1 Bromley Lane, Chislehurst, Kent BR7 6LH

MARK CHEESEMAN, LOCAL CARPENTER AND JOINER WITH OVER 30 YEARS EXPERIENCE. All Aspects Of Carpentry and Construction Executed Considerately and to a High Standard. Both Traditional and Contemporary Design Joinery - Cupboards, Wardrobes, Floating Shelves Etc. Sash Window Overhaul. If you have Rotten Window Sills, Door Frames Etc. rather than replace them iith the associated upheaval and expense, why not have a Timber/Resin Repair? Please Call Mark on 07767 456131 or H: 020 8854 4028.

S.S.D PLUMBING AND HEATING Friendly local plumber available for free estimates and advice. All works undertaken, no job too small, from boilers to bathroom suites, all works viewed within 24 hours, fully insured and new work guaranteed. Call today on 07931 536533 or 8305 1039 ssdbuilders2@hotmail.com
UPHOLSTERER SPECIALISING IN TRADITIONAL UPHOLSTERY www.suemayesupholstery.net or phone 07932 040298

S.S.D DAMP PROOFING SPECIALISTS in the treatment of RISING & PENETRATING damp. Repair/ renewal of rotten structural timbers as a result of damp. Chemical injection and render using tried and tested systems. Specialists in providing horizontal and vertical barriers against damp/ water ingress. Please contact us for a free consultation and written estimate. Mob: 07931 536 533 Land: 0208 305 1039

PUBBLE PLASTERING Need a plasterer with excellent references? Work is of high standard. Qualified C&G. Plastering-Rendering-Plasterboarding - Repairs. Free quotes! Call Alex on 07547 468459 / 0203 092 0684 pubbleplastering@googlemail.com

MALCOLM TIERNEY, CARPENTER Specialist in refurbishment, repair and replacement of sash windows. 0777 5657371

TYPEWRITER ENGINEER selling portables/repairs Dinsdale Road Tel. 0208 488 2713 / 07376 325107

LOCAL CARPET/OVEN CLEANER Specialist in cleaning Carpets & Ovens, Upholstery & rugs. Competitive rates. Email: adam@carpetcrew.co.uk M: 07828503132 <http://www.carpetcrew.co.uk>

DRESSMAKER Specialist in Special occasion wear, Bespoke wedding dresses and alterations with over 25 years experience. Bookings in advance: 07904 880448

DECORATING, ELECTRICS Plumbing and Property Maintenance. Est, 25 years. References available. Phil McNamara 8857 5480, mobile 07814 360862

REPAIRS & ALTERATIONS: School trousers, Blazer sleeves,shorter, Hems, Darts in dresses, and Jackets relined etc. Call 07904 880 448

HANDYMAN. Small works, furniture assembly, brick-work, plastering, hard landscaping, fencing, paving, small carpentry work, deliveries and light removals. Call Chris Pepper: 07944680269

GREENWICH LONDON BLINDS your local made- to- measure blinds and curtains company - Professional, Reliable and Independent. Free quotes and friendly advice. Please call Neil - 07795 087267 or email hello@greenwichlondonblinds.com

WINDOW & GUTTER CLEANING Blackheath-window-cleaner.co.uk 07791 465052

T.TA ELECTRICS. NICEIC Approved Contractor, Quality Tradesman. All electrical work undertaken, Fully Insured & Guaranteed. 24HR EMERGENCY ELECTRICAL. Please call Tony on 07961 509 40 OR 020 8488 7425 OR info@taelectrics.co.uk

INTERIOR DECORATOR & CARPENTER with over 20 years experience. A member of the guild of mastercraftsman. Free quotes & friendly advice on all your decorating requirements. Local references available. Tel. Ashley Greaves 0208 858 2981

ELECTRICIAN / ALARM ENGINEER No job too small TMIET registered. Call 07879 011792

TRAINED CHIMNEY SWEEP & STOVE INSTALLER Fast, friendly Happy to work! Call Anthony on 07772 649577 or email: chimneymaintenance@gmail.com

AIR CONDITIONING & ELECTRICAL WORK Fully qualified engineers CSCS Tel: 07419 312547

PEST CONTROL SERVICES All types of pests dealt with including fox control. Call John 0208 300 3496

SUNSHINE WINDOW CLEANING For a no-obligation quote call Martin on 07821403577

A MAN AND A VAN Tel: 020 8858 3889 Mobile: 07885 917842

JEWELLERY AND WATCH REPAIRS AND VALUATIONS from Michele Franklin. British Jewellers Association accreditation 07809 502 714 Michele@personaljewellerylondon.co.uk
WESTCOMBE CLEANERS I'm a friendly, hard-working & organised domestic cleaner. Regular or single services. Competitive rates. Additional tasks. I love my clients to be happy. Phone 07746 291617

TUITION

ITALIAN TUITION Native Italian teacher offers lessons at all levels.Preparation for GCSE, A-LEVELS courses, Grammar, Conversation Tel 07788 743371
MATHS & ENGLISH TUITION and preparation for 11+ and independent school selection tests by qualified and experienced teacher.marystuition.com Mary Bauckham 0779089838

mary.bauckham@gmail.com

LOCAL PRIVATE TUITION 1-1 or small group tutoring in English and Maths learning support GCSE by qualified tutor. Call: 07904 880 448

SHOW YOUR COMPUTER WHO IS THE BOSS Are you looking for some extra help working with your computer? Need some help with your digital photos, online shopping and the jargon? To discuss the options, call Paul on 07958 251448 or email paul.clayton@soulchip.co.uk

RUSSIAN TUITION. Russian-speaking university lecturer offers lessons at all levels (including university, business and conversation) in your home/office. Tel.: 07766 531401

SPANISH TUITION all ages and levels, GCSE, A levels , conversation, literature, by Latinoamerican native speaker. Please contact Miguel at migansiergut52@gmail.com or 07910 318513

MULVIHILL ACADEMY OF IRISH DANCE Adult and Child Irish Dance Classes available in the Blackheath area. Come along for a fun-all-in-one workout. For more information call Rachel on 07707 100521

SPANISH TUITION I am an experienced Spanish teacher available for individual or group lessons, GCSE or A Level. Contact Cecilia Fontelles on 07702255325 or fontrod@hotmail.co.uk

11+ TUITION Successful, qualified and experienced DBS-certified tutor providing one-to-one preparation of all eleven-plus exam components (CEM, GL systems). Evenings, weekends available. Email: elevenplus.smarter@gmail.com

PAINTING & DECORATING

Interior/Exterior
Experienced Reliable Clean
Fully Guaranteed/Insured.
References available.
Free no obligation quote
and advice given

JOHN at JAMES & LAMONT
Office 020 8462 4646
Mobile 07802 535695
jamlam.john@btinternet.com

LOCAL DRESSMAKER

Bespoke garments for Weddings, Proms & Special Occasions.

Repairs and Alterations.
School trousers/Blazers sleeves shortened.

Hems taken up, Jeans taken in.

Dresses re-shaped
and jackets re-lined.

Over 25 Years experience.

Call: 07904 880 448

BUY LOCAL!

Discounts available on production of your Westcombe Society membership card.

BLACKHEATH VILLAGE:

PARES FOOTWEAR

10% OFF all shoes over £20, excluding sale stock

RAFFLES DESIGNER WEAR.

10% OFF all non-sale goods

THE VERB SHOP 10 percent discount on all copywriting and content creation. Free 1 hour assessment of your marketing material.

GREENWICH:

NORTH POLE RESTAURANT

12.5% OFF Meals only for two

3D DIVING 10% discount on all scuba diving courses. Offer excludes scuba diving equipment.

GREENWICH COMMUNICATION CENTRE

at 164 Trafalgar Road: 10% Discount on all Computer Maintenance & Repairs (inc Tablets & Smartphones)
www.greenwichccc.com T: 02082692103

HUMBER ROAD:

BODYWORKZ - THE FITNESS CLINIC

109 Humber Road.10% OFF all treatments costing £30 or more except Chiropody; exc.Saturdays.

ROYAL NEPALESE RESTAURANT

(Station Crescent) 20% OFF meals for two or more Sunday - Thursday.

CORIANDER RESTAURANT (Station Crescent)

25% off Sunday to Thursday. Bookings only!

THE STANDARD:

COTON & HAMBLIN - OPTICIANS

£65 off complete spectacles

BLACKHEATH EYECARE OPTICIANS

20% off 2nd pair of spectacles. (Same prescription). Not in conjunction with any other offer. (Complete glasses start from £49.95 with single vision lenses). 5% off contact lens solution and accessories. <https://www.blackheatheyecare.co.uk/>

TROJAN PRESS 10% OFF all quotations

WESTCOMBE HILL

A * DRIVING SCHOOL £5 discount on the price of one x 2 hour lesson for WS members.

THE WONDER WOMEN NETWORK 10% discount

WESTCOMBE PARK ROAD

KAREN STOREY OF HOMESPACE offers members 10% discount on decluttering & homestaging services 0844 846 5854 www.home-space.biz

PENINSULA

SHENDA FALVEY PERSONAL TRAINING & BOOTCAMPs

Free bootcamp session at Greenwich Peninsula worth £10. Book to secure place (excludes existing customers)
25% off first personal training session plus free consultation M: 07887 727 335
www.shendafalveypersonaltraining.com

Personal Helper/Housekeeper

Active woman with a disability seeks an assistant for inside/outside the home.

- * Must live loca
- * Be physically active
- * Like organising, cleaning, food prep
- * Varied interesting work
- * Short shifts 1-2 hours each
- * Guaranteed weekly work £9.80-11.50ph

Interested and want to know more?
Please email: la.williams@hotmail.co.uk
or telephone 07743 490595

GRANT SAW

SOLICITORS LLP

For You & Your Family:

- Divorce and Financial Settlements
- Children Disputes
- Residential Property- sales and purchases
- Transfer of Equity
- Leasehold Extensions and Enfranchisement
- Wills and Probate
- Lasting Powers of Attorney

For Your Business:

- Commercial Property
- Sites for Redevelopment
- Commercial Contracts
- Mergers and Acquisitions
- Dispute Resolution
- Court and Tribunal Proceedings
- Insolvency

E-mail: enquiries@grantsaw.co.uk

www.grantsaw.com

Greenwich Office
Norman House
110-114 Norman Road
Greenwich, London
SE10 9EH

Blackheath Office
9 Hare & Billet Road
Blackheath
London
SE3 0RB

Tel: 020 8858 6971





African Drumming Workshop
Rainforest Animals LIVE!
Hands on Sushi Making

L e a r n t o m a k e
A l l A m e r i c a n
R i o C a r n i v a l
M e h n d i H a n d
H o l i F e s t i v

P O I N T E R S - S C I