



Westcombe NEWS

Free to 3800 homes, & in libraries & some shops

June 2017 No. 5



A community newspaper commended by the London Forum of Amenity & Civic Societies

New Thames tunnel approved

After months of waiting for it to be announced, the transport secretary Chris Grayling has given the green light to a new crossing beneath the River Thames. The hope is that it will unlock billions of pounds worth of economic benefit and create thousands of jobs.

Will it have an impact on the Blackwall Tunnel? Only time will tell...

The planned route will run from the M25 near North Ockendon, cross the A13 at Orsett before crossing under the Thames east of Tilbury and Gravesend. A new link road will then take traffic to the A2 near Shorne, close to where the route becomes the M2. It is expected to carry 4.5 million heavy goods vehicles in its first year.

The Dartford Crossing, which with peak flows often exceeding 162,000 movements per day, has long exceeded its design of capacity of 135,000 vehicles a day.

The new route – “Option C” – was selected by the majority of nearly 47,000 respondents to a consultation.

A further £10 million will be used to improve traffic flow at and around the existing crossing as well as studying ways to further tackle congestion. This will include an investigation into cutting ‘rat-running’ through Dartford and Thurrock.

Christian Brodie, chairman of South East Local Enterprise Partnership, said: “This is excellent news for Kent and Essex and will have a significant economic impact. It strengthens the resilience of our UK and European connections – very necessary as we move towards Brexit.”

The 13-mile route will cost up to £6.2bn and increase capacity for vehicles crossing the Thames east of London by 70%.

Steve Gooding, director of the RAC Foundation, said: “Whilst it is motorists who account for the majority of the journeys at the Dartford Crossing, the need for another link across the Thames is being driven in large part by the rapid rise in freight traffic and the expansion of the Channel ports.

“However, planners will also have noted official figures which predict that traffic on our motorways and major roads could increase by 60% by 2040.”

These doubts are shared by some local campaigners who fought against Option C. Bob Lane, chairman of Lower Thames

Crossing Association (LTCA), who campaigned against Option C said:

“I think they’ve made a mistake and missed an opportunity to fix a problem in Dartford for a generation.

“They’ve condemned the people of Dartford, and drivers on the M25, to continuous problems. Wherever you put the crossing you’re going to upset people. They needed to put that to one side and come up with the solution that is right for traffic. The Highways England forecast clearly shows Option C won’t solve the problems, and Dartford Crossing will still be over capacity.”



Anne Robbins, of the Westcombe Society Environment Committee comments:

“It isn’t fully green-lighted yet. I believe it has to go through the full Public Examination before it can be approved, and given the strength of public feeling against it, there might be quite a lot for the Examining Officers to consider. During the Statutory Consultation, the DfT received more objections than for any previous major infrastructure project.

“This proposed route runs through some undeveloped areas of natural beauty and protected Green Belt land – with implications for wildlife.

“It doesn’t necessarily affect the Dartford Crossing a great deal, given that the M25 is such a main route for Channel Tunnel traffic. Nor the Blackwall Tunnel. The principal beneficiary is likely to be the giant shipping terminal in Essex, which is due for expansion. It won’t help in the case of traffic heading for the proposed Universal Studios theme park planned for Ebbsfleet – which could affect our area.”



There was a moment in April when it seemed like summer before a most unseasonably chilly May set in. This was the scene in the Westcombe Woodlands in that false dawn of summer in April when the children went pond-dipping. Next open days at the Woodlands: 24th & 25th June. PHOTO: Frank Smith

Phone scam: don’t say “Yes”!

News is sweeping across the UK of the ‘Can you hear me?’ telephone scam which has been reported in the US – and is now occurring in London. People are being advised how to protect themselves against scam and nuisance calls.

CPR Call Blocker, makers of the best selling call-blocking device in the US and UK, recently warned the UK public of the US scam which works by the scammer recording you saying “yes” when you are asked ‘Can you hear me?’ or “Is that Mr/Mrs/Ms?” The recording is then edited to make it sound like you have authorised a major purchase and is used as a form of verbal contract. A local man – a printer – was threatened with court action for not “honouring” a bill for £400 for an ad they say that he agreed to place in a magazine. Needless to say the ad did not exist. (Unbelievably the magazine was the *Police Gazette*!!!) So, what to do?

Telephone Preference Service

The first thing you can do is to sign up to the free Telephone Preference Service (TPS) at www.tpsonline.org.uk

If you still receive calls after registering you can make a complaint, but TPS do not have the power to enforce any penalties – and some people claim that they still receive calls after they have registered.

A lot of companies contact you because

you unknowingly or inadvertently agreed to allow your details to be shared. Always make sure you don’t tick any box to allow your details to be shared with others.

Call Blocking Technology

Phone companies now offer a number of services that help block nuisance calls – for example, BT’s Call Protect service. You can also buy stand-alone call-blocking devices – there are many on the market: search for ‘call blocker’ on Amazon at www.amazon.co.uk

If calls still get through to you after the above steps, you can report nuisance callers to the Information Commissioners Office (ICO) at www.ico.org.uk. Likewise if you get silent calls you can report them to Ofcom at www.ofcom.org.uk

Westcombe Society

Sat 10th June 7.30 Members’

Evening Mycenae House

RSVP to Caroline please, on 8853 0948

Sat 24th June 1.30 - 3.30 pm

Family Summer Picnic

Mycenae Gardens

Music, Games for children, Tombola, Face Painter, & cake stall.

Mycenae House café/Bar open.

ELECTION

Don’t forget to vote on JUNE 8th!

You don’t need a garden to garden! Toni Hale of the Mental Health Activity Trust in Delacourt Road sent us these photos:



< < Newsbriefs > >

People

* We are sorry to report the deaths of **John Card**, and of community campaigner **John Murphy**, aged 96, whose funeral took place on May 31st.

* Commiserations to **Anna Townend**, who was involved in a traffic accident in Woolwich. Anna is now recovering in Eltham Community Hospital.

* Congratulations to **Ann Hill** on winning the George MacDonald Medal for outstanding research on health in tropical countries.

* Five local people have been granted the Freedom of the Borough in recognition of their long-standing service: **Bradley Hemmings** MBE, **Bob Harris**, The Rt. Hon **Nick Raynsford**, **Neil Rhind** MBE FSA and Dr **Jagir Kaur Sekhon** OBE; they received their awards on May 17th.

Festival of Britain Sculpture Found

The Sunbathers, by Hungarian artist Peter Laszlo Peri, was presumed lost forever after the Festival of Britain on London’s South Bank closed in 1951, and many of the temporary exhibition’s sculptures were destroyed.

But last year a couple visiting Historic England’s exhibition Out There: Our Post-War Public Art at Somerset House announced that they had seen it in the garden of The Clarendon Hotel in Blackheath.

Education cuts

Government cuts in education mean that Greenwich will lose 672 teachers over the next three years. In April, teachers at Corelli College and Plumstead Manor walked out for a day in protest.

Teachers’ unions and Greenwich Council have strongly condemned the cuts which adversely affect children’s education. They have called on the government to reverse the cuts.

Warning: New crime.

Mobile Phones and small electronic devices are being snatched by thieves on mopeds and cycles, often outside stations and at bus stops. Please be aware of your surroundings when using such devices.

GDIF

Performing arts companies from Korea feature in the Greenwich+Docklands International Festival this summer as part of the Korea/UK 2017-18 initiative. Time for Kim Jong-un to turn up as a gesture of good will?

Westcombe News

ALL EDITORIAL CORRESPONDENCE TO:

Neville Grant, The Editor
wnews@westcombesociety.org
Tel. 020 8858 8489

ALL MATERIAL TO BE SENT TO: wnews@westcombesociety.org

Deadline for the July/August issue: 16th June

Environment Editor: Maggie Gravelle

What's On:

Reporters: The community – that means you!

ENVIRONMENT COMMITTEE

Emily Norton All queries and comments to: 020 8853 2756
environment@westcombesociety.org

DISTRIBUTION Emily Norton and volunteers.

Volunteer distributors please phone 020 8853 2756, we need your help!

ADVERTISING MANAGER

Marilyn Little, 163 Westcombe Hill, SE3 7DP 020 8853 1312
Advertising@westcombesociety.org

All adverts payable in advance by cheque to **The Westcombe Society**.
DISPLAY: Single column 6cm x 6cm:
One - four issues £35, five-plus issues £30 each. Other sizes: please inquire.
Classified Ads (Market Place) 30p per word (A telephone number = one word. An email/web address = 3 words.) Deadline for all adverts is 10th day of the preceding month.

Printed by: Trojan Press

Contact the Westcombe Society:
WestcombeNews@egroups.com
Publisher: The Westcombe Society
Chairman: Marilyn Little
Tel. 020 8853 1312

The views expressed in the Westcombe News are not necessarily those of the Westcombe Society or of the Editor. We take all reasonable precautions to protect the interests of our readers by ensuring as far as possible the bona fides of our advertisers but cannot accept any responsibility for them. Any complaints should be addressed to the advertiser.

*To access back-numbers (in colour) go to:
www.westcombesociety.org/westcombe-news/*

*Westcombe Society's Blog:
http://westcombe.blogspot.com*

WESTCOMBE SOCIETY MEMBERSHIP

Please send this membership form to:
Christine Legg, 69 Mycenae Road, London, SE3 7SE

Name.....

Address.....

.....

Tel.....

Email:

Please enclose payment as appropriate:

Family Membership	£12	[]
Individual Membership	£8	[]
Senior Citizens/unwaged	£4	[]

Westcombe Society Annual General meeting

The AGM of the Westcombe Society took place on Friday May 12th. in the Centenary Room of Blackheath High School for Girls by kind permission of the Head.

The Chair, Marilyn Little, recorded yet another successful year: the Society now had some 450 members. She thanked her committee for their support, and everyone who helped out in so many ways – from serving on the Events Committee, serving on the Environment Committee, or simply by volunteering for numerous jobs – events organising, producing and distributing the *Westcombe News*, making sandwiches ... the Society simply could not function without the good will and active support of members, and she was extremely grateful to everyone. In presenting the accounts, she said the finances of the Westcombe Society remained healthy, even though the Christmas Bazaar had been scaled down this year because of constraints on space.

Joanne added her voice in thanking the many people who ensured that the events went off successfully - the Senior Citizens' Teas, the Quiz nights, the Members' evenings and parties, the summer picnic, and various charity events such as the

Macmillan Coffee morning, and the fund-raising Macmillan walk. The Christmas Bazaar was somewhat scaled down this year, as it had to be held in Invicta School, but it had still been a very worth-while event.

In her report, Emily Norton highlighted the work of the Environment Committee in helping to maintain the environmental attractions of the area, whether arborial or architectural; and co-operating with fellow amenity societies in working towards ensuring that planning developments took into account the views of local people. She thanked the members of the committee for all their hard work.

Neville Grant also thanked all those who helped to make the *WN* a success: it was not just the product – the newspaper – but the process: so many people working together on its production and distribution had the effect of helping to bind the community together. But he added that the society should think about appointing a new editor to bring in fresh ideas.

After a refreshment break, those present greatly appreciated a talk by Graham Dear, the manager of Greenwich Park, on plans for the future. See page 7.

Charity in Motions

The people of Christ Church East Greenwich were out on Trafalgar Road again on 23rd April to support the London Marathon runners while raising money for the Greenwich Winter Night Shelter, a local church-led charity which provides an evening meal, bed and breakfast for homeless guests during the winter months in seven local church venues.

The local landmark church building is on the London Marathon route so after an early service the congregation went outside wearing Christ Church T-shirts to sell bacon rolls, sausage rolls and hot drinks in aid of the Greenwich Winter Night Shelter.

The runners loved the rhythm of the

Nostalgic Steel band who regularly support Christ Church events while the crowd danced to the beat. Over £300 was raised.

Rev'd Margaret Cave, Vicar of Christ Church and a trustee of the Greenwich Winter Night Shelter said, "This was a wonderful opportunity for us to be out with our local community enjoying the joyful atmosphere of the London marathon crowd at the same as serving yummy food to raise money for a very important local charity.

"We were especially grateful to local tradespeople, Drings butchers and Heap's delicious sausages from his cafe in Nevada Street for donating the bacon and sausages for our breakfast rolls."



Letters

Any views expressed are personal, and are not necessarily those of the Westcombe Society or the *Westcombe News*.

From: Ian Blore, East Greenwich Residents Association (EGRA)

Jim Wintour (WN, May 2017, No.4) suggests that London should emulate Barcelona's success by building an outdated polluting cruise port in Greenwich. Barcelona is indeed a wonderful city but one that is threatened by EU fines for its badly polluted air. Our great city, which is similarly threatened, can avoid extra unwanted pollution by creating a 21st century cruise liner terminal.

This is EGRA's objective and one we have recently discussed with the London Mayor's Office. Please come join us at EGRA, Jim, and others who live nearby, to prevent a cheapjack facility being foisted on our citizens.

From: Richard Baglin The Greenwich Society

Jim Wintour's article cheerfully ignores the impact on our air quality of cruise ships' diesel engines running 24/7 to keep the ships' power supplies running. Without onshore power the emissions are the equivalent of 688 heavy

lorries idling all day and night for six months; that figure comes from the AMEC independent report to the GLA when the last Mayor approved the scheme.

Sadly there are no "strict environmental regulations" which prevent this worsening of an already horrendous air quality crisis.

Yes a boost to the Greenwich tourist economy would be welcome but a Thames Clipper service on site and a new road link to the Blackwell Tunnel suggests most passengers will head off to central London. And of course they will eat and sleep on board, not in Greenwich. So the alleged benefits won't outweigh the damage.

From: Victoria Line Westcombe Park Road.

I was very pleased to learn that the planning committee refused the council permission to sell this tiny plot – the community garden at the foot of Royal Hill which would only have benefited those with the money to buy into this

News about the *WN*.

The **Westcombe News** is, we are told, highly valued in the community, and is highly sought-after in adjacent areas.

Interviewed by Marilyn Little, chair of the Westcombe Society, the Editor said:

"We pride ourselves on providing a reliable source of news for the local community – as well as providing, to some extent, a window on the world beyond.

"And we get very good community involvement, by those who write to it, or for it, and send in photographs. and advertise – and, not least, help to distribute the paper, street by street. All volunteers! However, more help is needed on the production side. Otherwise, no news would be bad news!

"We use a very simple page-making system called Quark which takes the pain out of production – and this makes the paper a pleasure to produce. Seriously, it's extremely satisfying!"

The message we are getting is that the Editor needs more assistance in the short term; and in the longer term, he needs to find a new editor. ***Interested in finding out more? Give him a ring on 8858 8489.***

Park History Group

The Greenwich Park History Group is hoping to gather information about the Park from long-established locals. It is all part of piecing together the more recent history and development of the park.

If you have

- * lived in the area for many years
- * a relative who was a regular visitor before or during the war and who talked to you about the Park
- * photographs from those days

please come along on Monday 5th June at 2.30 pm to the Wildlife Centre in the Flower Garden near the lake, for a cup of tea, a piece of cake and a chat.

To plan this event it would be very helpful if you could let us know that you will be coming. Please ring 07867 801069 or email bobwyates@ntlworld.com

There is also a meeting of the History Group on Friday 2nd June at 11.00 am, in the Wildlife Centre. All welcome!

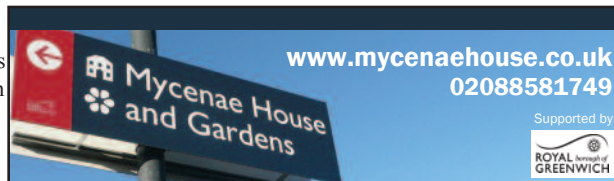
extremely expensive corner of Greenwich.

I continue to be disturbed by the march of buildings, most of which are ugly high rise blocks, all over the borough. and consider this a small victory for those of us without £ signs in our eyes.

From: G Bailey Westcombe Park Road.

I refer to your article on page 7 of May's WN "Bluebell Alert". It's not just bluebells that are in danger of being trampled on or looted: it is against the law to pick any plant growing in the wild, whether they be daffodils, bluebells, snow drops (or the bulbs for these beautiful plants), foxgloves cowslips, orchids – you name it.

The numbers of these lovely wild flowers are visibly diminishing all over the country.



Great Night Out!

June 2 Adrian Legg - Guitar Legend

And celebrating summer . . .

July 23 Summer Sunday Festival

Lots to see, eat & do!!!

'This place is buzzing'
Time Out

www.mycenaehouse.co.uk 02088581749

90 Mycenae Rd, Blackheath Standard, SE3 7SE 400yds to Westcombe Park Train Station Free Parking

Westcombe News June 2017

IT SUPPORT

For ALL your home & business needs
Call now for FREE advice

headstart
IT Solutions

020 8858 2002

www.headstart.it

LOCAL NEWS

Florence Brenda Wyke-Holloway 15th May 1918 - 14th April 2017

We are very sorry to report the death of Florence, who always preferred to be called Brenda, and who lived in Kleffens Court, Westcombe Park Road. Brenda was born in Ceylon (now Sri Lanka) to a family of tea planters. As so often happened in those days, she was sent back to the UK to boarding school – at the unusually young age of four ...

During her extended years at boarding school, she developed a strong moral compass, and her Christian upbringing remained with her throughout her life.

For a while she worked as a nursery nurse (working for Lord Egremont in Petworth House) but when the war started she joined the WAAF. During the war she served in the WAAF police both at home and abroad, including a spell with 617 Squadron (the Dam Busters).

After the war she served in Egypt and Palestine, and, on leaving the Air Force,

she joined the Women's Voluntary Service in India. Back home again, she had a number of different jobs, including until 1981 duties as a Special Constable.

Brenda had a very wide range of interests – from animals and ballet to bridge and tennis – and an even wider circle of loyal friends. She will be greatly missed by all those whose life she touched, both friends and her extended family, not least for her generosity of spirit and the charities she supported.



Election: LGA's Wish List

Local government leaders are calling on all political parties to commit to a 10-point plan to boost vital local services, build homes, create school places, close skills gaps and drive economic growth.

The Local Government Association has written to all political party leaders with a list of key pledges they want to see in their manifestos ahead of the General Election. These are essential to help councils better support their communities and meet challenges facing the nation.

The LGA, which represents more than 370 councils in England and Wales, wants the manifestos to commit to:

1. Ensuring councils have the funding they need to provide the vital services that communities rely on, such as collecting bins, filling potholes, maintaining our parks and green spaces, caring for the elderly and protecting children. Local government currently faces an estimated overall funding gap of £5.8 billion by 2019/20.
2. Continuing with reforms to allow local government to keep more of its business rates income, which balances rewarding councils for growing their local economies but avoids areas less able to generate business rates income suffering as a result.
3. Agreeing new devolution deals across all parts of England and the UK. Taking decisions over how to run local services closer to where people live is key to improving them and saving money.
4. Handing local government a central role in deciding whether to keep, amend or scrap EU laws once they are converted into domestic law. Brexit should not simply mean a transfer of powers to Westminster, Holyrood, Stormont and Cardiff Bay.
5. Closing the £2.3 billion funding gap facing social care services by 2020 plus a formal review to protect support services that care for elderly and disabled people.
6. Allowing councils to build affordable homes. They need to be able to borrow to invest in housing and to keep 100 per cent of the receipts to reinvest in more housing.
7. Giving councils the resources they need

Spirit of Thomas Tallis

On July 1st, our strong local musical tradition is celebrated by a concert called *Greenwich Connections* in St Alfege's Church. The Thomas Tallis Society Choir will be performing works by composers with strong links to Greenwich: Thomas Tallis, Nicholas Lanier, William Byrd, Samuel Pepys and contemporary composer Jonathan Dove.

Not to be missed! Starts at 7.00 pm.
Tickets £15.00 & £10.00 or on the door.
www.ticketsource.co.uk/tts

Summer in the park



To celebrate the 25th Anniversary of the Friends of Greenwich Park, the Phoenix Dixieland Jazz Band, supported by the Greenwich Steel Band, is back in the Observatory Garden, Greenwich Park for their summer concert.

The concert is at 12.30pm on Sunday 18th June: another marvellous event for all the family! Gates open at noon. There will be a bar, as well as food and ice cream. The concert ends at 3.30pm.

Tickets from: Friends of Greenwich Park, 52 Greenwich Park Street, SE10 9LT. (cheques to "Friends of Greenwich Park") Tel 020 8853 2150 email: cnbevan@hotmail.com Cost: £5.00 for adults, £7.00 on the gate) Under 16s: Free.

The Friends of the Park are also staging a full programme of afternoon concerts at the Greenwich Park bandstand during

June, July and August. These concerts are free and start at 3.00pm.

www.friendsofgreenwichpark.org.uk

Bandstand Concerts

- Sat. 24 June Royal Greenwich Big Band & Greenwich Steel Band (from 2.30)
Sun. 25 June London Gay Symphonic Winds
Sun. 2 July Silver Ghosts
Sun. 9 July National Jazz Youth Orchestra
Sun. 16 July Belvedere Concert Band
Sun. 23 July Crystal Palace Band
Sun. 30 July Lewisham Concert Band
Sun. y 6 Aug. Lambeth Wind Orchestra
Sun. 13 Aug. South London Jazz Orchestra & Live Band Lindy
Sun. 20 Aug. Galaxy Big Band
Sun. 27 Aug. Greenwich Concert Band
Mon 28 Aug Mardi Gras Jazz Band

Clive Corlett

End of an era

It is with deep regret that we have to announce that Pegga-Stores Card and Gift shop at Blackheath Royal Standard will be closing down on Sat. 3rd June.

Angie told the *WN*: "Mrs Hawkes had her shop for nearly forty years until sadly passing away in December 2015. We would like to take this opportunity to thank all our loyal friends and customers for all your continued support: we shall miss you all. **Love from Angie, Andrew and all the staff at Pegga-Stores**"
The Closing Down Sale begins on Monday May 22nd.



Property news

Estate agents used to advertise property that was "challenging" with the words "Suit enterprising young couple." (SEYC) This dilapidated property [right] in Ruthin Road, completely engulfed by ivy and heavily camouflaged by overgrown garden greenery, has finally been sold.

The three-bedroom, end-of-terrace property on Ruthin Road was recently auctioned with a £450,000 guide price

The bidding opened at £470,000 but in the end the house went for £554,000 with three bidders in heavy competition. It is not recorded if they were young, but they were probably pretty enterprising!



Maritime Radio

Maritime Radio (www.maritimradio.london.com) has gained a permanent licence. All credit to Duncan Martin and his team and sponsors who have worked tirelessly to bring local radio to our community; and to Charlton Athletic Football Club who have offered a home and crucial support to the station.

Maritime Radio's logo is 'everything local' and is a real asset to the local community. It is hoped to go on air full-time, but the launch date is as yet unknown. To get involved, to advertise, or to find out more, visit www.maritimradio.london.

Barbara Ward

Railway news

Last month the *WN* highlighted the consultation exercise on SE train services to London Bridge, Victoria and Charing Cross: not too late to write to Betterseouteastern@dft.gsi.gov.uk

Meanwhile, train-watchers are anxiously waiting with baited breath for the outcome of a consultation exercise that ended in December 2016: this concerned the possibility of a Thameslink service through Greenwich to St Pancras. This exercise is quite different from the present SE one.

The next stage will be a proposed timetable following a review of the consultation responses by Govia Thameslink railway (GTR).

Mike Sparham of GLUG (the Greenwich Line Users' Group) told the *WN* that he anticipates this next stage to be in "late spring/early summer."

Industry sources report that GTR are having difficulty making a new timetable work north of St Pancras because of the interface with the Midland Main Line. Whether this will have any impact on the proposed Luton - Rainham service through Greenwich remains to be seen.

FEATURES

Talk about Art & Social Change

John Bartram

Talk About...Art (TAA) is a not-for-profit organisation whose aim is to promote greater access to and engagement with the visual arts for children and teenagers in areas where exposure to the visual arts may be restricted or discouraged.

We do this by mounting professional exhibitions and providing supporting activities which encourage creative participation, research, debate and a sharing of knowledge through workshops, augmented reality technology, public talks, publications and other forms of art ambassadorship and in this way to generate life-enhancing benefits for an audience of people of all ages and cultures nationally.

By involving young people directly in the stewardship, creation and presentation of the exhibitions, these increasingly become *their* projects.

Arts & Crafts Movement

Talk About Art is launching its fourth show this summer to explore the Arts & Crafts Movement that restored traditional crafts in the 19th century and made everyday items things of beauty.

Talk about...Art & Social Change, which runs from June 17 to July 8 at St Margaret's Church, Lee, will examine the movement's reaction to the mechanisation and factory production techniques that were spawned by the industrial revolution.

In the wake of the industrial revolution, Britain was no longer a collection of isolated market towns and rural communities but a world leader in mechanisation and mass production.

Stained glass



Traditional crafts and working methods that had been the lifeblood of industry for centuries were becoming trampled underfoot. The vision of the Arts & Crafts Movement was to restore the value of traditional crafts and to promote a quality of design that turned everyday items into things of beauty.

The exhibition

The exhibition will look at how the Arts & Crafts Movement was started, how its influence redressed the balance of social change (particularly for women artists) and how it promoted an ideal that spread across the world.

It is free: on each Saturday an artist in residence will discuss their work and provide drop-in workshops for the general public. Crafts covered will include print, pottery and jewellery-making.

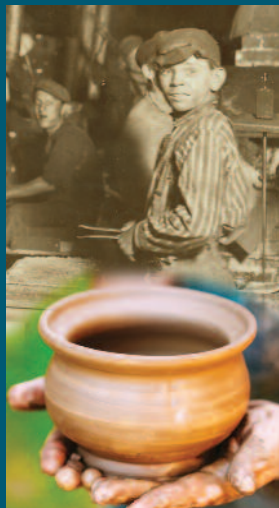


Moorcroft ceramic

June 17 to 8 July 2017

Saturdays 11.00am - 5.00pm
Mondays 10.00am - 4.00pm
Wednesdays 10.00am - 4.00pm

talk about...ART & SOCIAL CHANGE



talk about...ART & SOCIAL CHANGE explores the movement that restored traditional crafts and made everyday items things of beauty



Lee Terrace, London SE13 5DN

Let's keep talking about...ART & SOCIAL CHANGE



#socialchange

Fun workshops for schools, led by TAA artist and film maker Simon Purins, will also be offered free of charge under the title 'Hands Make Crafty Work' and these will explore the concept of handmade products inspired by the Arts & Crafts Movement.

The exhibition is open on Saturdays 10.30am - 4.30pm and on Mondays and Wednesdays from 10.00am - 4.00pm.

Talk about...Art and Social Change follows on TAA's successful exhibition on the ancient culture of China and the Mogul Empire earlier in the year

If you would like to book one of the free school workshops or obtain further information on how the workshops complement the national curriculum, please contact Melanie Jones on Melanie@mjassocs.demon.co.uk.

Forty Years On: Greenwich Open Studios

Anthony Roe

As some long-time Greenwich residents may remember, there was a time when Greenwich Festival was a lively local one with a few outside events tacked on.

And it was as a contribution to this festival that in 1977 the many Greenwich artists first opened their studios to neighbours, friends and visitors - one of the first groups of artists in London to do so. The Greenwich Open Studio group has continued its annual shows, not always the same artists of course because, although some members have been participating for years, GOS is also constantly renewing itself.

This year again, the group will be opening their studios from 2.00 to 6.00pm on the weekends of 10/11th and 17th/18th of June. There are 20 participants, and 3 hubs: West Greenwich, East Greenwich and the part of Blackheath Park that falls within the Borough of Greenwich.

A very wide range of artistic skills are represented: painters who work in oils, pastels and/or watercolours; potters whose work is both functional and decorative; and printmakers working with etching, lino-cutting and mono-printing.

Parishioners of St Alfege may be interested to learn that one of Open Studio's printmakers and newest recruit is their vicar, the Rev'd Chris Moody who will be showing his work at the Vicarage in Park Vista.

Another first timer Anthony Roe is showing pastels and drawings at 23 Beaconsfield Road; other regular local exhibitors are Felicity Moss and Colin Boothman at Mycenae House, 90 Mycenae Road and Janey Jones who will be showing at her home at 5c Charlton Road at the Blackheath Standard.

For more details about the artists, their addresses and for a map, see www.greenwichopenstudios.co.uk or look for their leaflets at the Libraries and elsewhere.

BUILD & CREATE
CONSTRUCTION LTD

BE INSPIRED AND BUILD

Extensions and refurbishments



buildandcreate.co.uk
clinton@buildandcreate.co.uk
0796 1089012 0208 305 2184

Proud members of
Checkatrade.com
Where reputation matters



Pain Clinic Leap

Vanbrugh Pain Management Clinic has been nominated finalist for innovation in the UK's most prestigious British Medical Journal 2017 Awards.

The NHS clinic run by Drs Ellen Wright and David McGavin takes patients with persistent and intractable pain and often suffering from a number of illnesses. It offers a 'whole person' approach based on gaining patients' trust and encouraging their rehabilitation through two gentle therapies - rhythmic massage and eurythmy movement.

"We have an hour-long interview to try to find out about the patient", says Dr McGavin, "so they move from being a set of symptoms to being a person in trouble. It is important to try to restore sleep patterns and lift anxiety and depression." Social activities such as crafts, cookery, music & singing and gardening are backed by practical help such as representing patients at DWP disability benefits appeals.

Results, soon to be published in the Journal of Pain Management, show statistically significant improvement in health status, a fall in depression and substantial reduction in use of strong pain killers and psychotropic medication. This innovative model has been developed within Vanbrugh Clinic by a small charity, Kairos Rehabilitation Trust, which operates from the



Building self-confidence:
The Kairos Choir taking a break

Forum at Greenwich. The charity, which especially benefits from non-medical input, is now looking for additional trustees and volunteers with skills in administration, strategy and finance to help develop and expand the model, particularly its social enterprise activities.

Enquiries to Ingrid Hermansen on 07712 810108 or info@kairosrehabilitation.org.uk.

WHAT'S ON



ARTS

The ARTS SOCIETY BLACKHEATH (formerly BLACKHEATH DECORATIVE & FINE ARTS SOCIETY), St Mary's Church Hall, Cresswell Park, Blackheath www.artsinblackheath.org
We meet on the 4th Thursday of each month- except August and December- 2pm for 2.30pm Non-members can pay on the door.
22nd June Marie-Anne Mancio talks on RUBENS AND THE MARIE DE MEDICI CYCLE.
GREENWICH DECORATIVE & FINE ARTS SOCIETY King William Court, University of Greenwich 12 Jun 2017: THE IMITATION GAME - UNDERSTANDING CHRISTIAN ART talk by Dr Helen Rufus-Ward, art historian
Visitors may pay on the door
SCENES FROM POST-WAR LONDON 1946 – 1960 THE EARLY PAINTINGS OF TERRY SCALES 9th May – 10th June 2017 At West Greenwich Library, 146 Greenwich High Road, SE10 8NN Tel: 020 8858 428 Artist's talk on Friday 9th June 3.00– 4.00 pm at West Greenwich Library. <http://terryscales.blogspot.co.uk>
ART EXHIBITION: LONDON NIGHTSCAPES by local artist LUBNER SPEITAN 8th May – 8th June. Mon-Sat 9am to 9pm at Greenwich West Gallery. Entrance via: G-West Café, Lovibond Lane, Greenwich, SE10 8JA (rear entrance of Greenwich West Community and Art Centre, 141 Greenwich High Road)
Enquiries contact: 07788 237 893
Website: www.lubnaspeitan.com
BLACKHEATH HALLS The Blackheath Art Society will be holding their annual Summer Exhibition (their 70th) at the Blackheath Halls, 23 Lee Road, SE3 9RG. Admission is free 3rd - 29th June.
WOOLWICH DISTRICT ANTIQUARIAN SOCIETY
10 June 2.00 pm Charlton House LONDON PUBS A DATE WITH BUILDINGS Charlotte Matthews

CHILDREN & FAMILY

MYCENAE HOUSE
Every Mon + Fri (term-time) 10am-1pm
Bo-Peeps Preschool Stay & Play. Fun and friendly drop-in sessions for children 0 - 4yrs old and their carers.
BLACKHEATH HALLS 23, Lee Rd. Blackheath SE3 9RQ 0208 463 0100 www.trinitylaban.ac.uk
SAT 17th June 1.00pm A MIDSUMMER NIGHT'S DREAM Recital Room Join award-winning Box Tale Soup for their new family adaptation of Shakespeare's enchanting story, made accessible to a younger audience. £8.50
Sat 17th June 13.00pm A MIDSUMMER NIGHT'S DREAM Recital Room
GREENWICH THEATRE CROOMS HILL London SE10 8ES 8858 7755
June 1 12.00 & 4.00pm A HEART AT SEA Musical Folk tale Age 6+
June 1st 2.00pm HAPPILY EVER AFTER The queen and her lazy son. Will he ever get married?
June 11 2.00pm THE TAP DANCING MERMAID

SPOKEN WORD

BLACKHEATH HALLS 23, Lee Rd. Blackheath SE3 9RQ Box Office: 0208 463 0100
Wed 21 June 8.00pm LEE STUART EVANS - WORDS BEST SUNG Recital Room, Literary event from Friends of Blackheath Halls £10.00
INDUSTRIAL HISTORY SOCIETY
13th June 7.30 James Hulme on Charlton Riverside Meeting at The Old Bakehouse, Age Exchange, Bennet Park.
BLACKHEATH SCIENTIFIC SOCIETY
Friday lectures at 7.45pm Mycenae House. Visitors welcome - donations £3 to the society.
Tues 27th June 10.30am - 12.30pm TRINITY COLLEGE LONDON Guitar Syllabus Presentation Stuart Room, Kings Charles Court, Old Royal Naval Court An overview of the new guitar syllabus.
IN-WORDS Tues. June 6th. 7.30 pm West Greenwich Library 'Not the General Election' event. Bring along poems - however short (faux) haikus, limericks etc and short fiction (max 500 words) on politics, democracy elections etc. Your own work, or relevant quotations If you can't take part, do send in your choice of poem/short fiction, and it will be read on the night. Bring your own publications to sell too! Free, refreshments, donations. RSVP!
Visit Irena Hill's website in-words.co.uk for details of these and other upcoming events.

Grant Saw Wealth Management Limited

INDEPENDENT PERSONAL and CORPORATE FINANCIAL ADVISERS
Investments - Pensions - Estate Planning

2 Charlton Road. Blackheath Standard
London SE3 7EX (T) 020 3417 9760
email: enquiries@gswealth.co.uk
website: www.gswealth.co.uk.

HELPING YOU PLAN YOUR FUTURE
Grant Saw Wealth Management Ltd. is authorised and regulated by the Financial Conduct Authority



THE WESTCOMBE SOCIETY

Sat 10 June 7.30 Members' Evening
Sat 24th June Summer Picnic
Sun 23 July Mycenae House event: Stall
Sept 17 Macmillan Walk
Fri. 29 Sept. 10.00am - 2.00pm
Macmillan Coffee Morning
Sat 21st Oct. 2- 4.00pm Chrysanth. Tea
Fri 10 Nov. 7.30 (8.00pm) Autumn Quiz.
Sat. 25 November Christmas Bazaar at Blackheath High School for Girls
The Westcombe Society really needs more volunteers to help out at these events. If you are interested, please ring Joanne on 07709 571777.

COMMUNITY

ST URSULA SUMMER FAIR 64 Crooms Hill
June 10th – 12pm to 3pm The Friends of St Ursula welcome you to the school for our first summer fair. Featuring the school choir & musicians, Also a bake off competition, bouncy disco dome, craft market, international food stalls, and many more. Entry £1 adults 50p school children. 64 Crooms Hill SE10
GREENWICH UNION READING GROUP
First Wed. of each month. (Read –Discuss–Share food) Meet at The Greenwich Union Pub. Free.
All welcome! Next book: *The Girl on the Train* - Paula Hawkins Contact Barbara: 07960 107578
WOODLANDS FARM BARN DANCES in a real farm barn! With music and calling provided by Skinners Rats. BYO food, drink & glasses and dine on hay bales to complete the rustic evening. Saturday 3rd June from 7.30pm – 11pm. Tickets are £14. To book go to www.thewoodlandsfarmtrust.org
THE WOODLANDS FARM TRUST SUMMER SHOW is on Sunday 11th June 11:00am-4:30 pm. Midsummer Hay Meadow Walk Sun. 25th June 10am
MUSEUM OF LONDON DOCKLANDS
Until 26th July: 100.00 am & 4.00 pm
ARCHEOLOGICAL DETECIVES: uncover London's past All ages. Free. Book!
Unit May 1st 2018 EXPLORE OUR MUD-LARKS GALLERY Free: Suiteable 2. - 8. years old
Until 31st Dec. The mysterious LONDON STONE
Until 25th June: REVEALING THE PAST. Objects from the past - and X-ray techniques!
Until 13th August CROSSRAIL & DOCKLANDS REGENERATION
WESTCOMBE WOODLANDS Next volunteer days: Sat 1st July; Sunday 6th August.

THEATRE

THE GREENWICH THEATRE, Crooms Hill, London SE10 8ES Box Office: 8858 7755
Tues 6th - Sat 10th. June Tue, Wed 7.30pm, Sat 5pm THE GREAT TRAIN ROBBERY + Thurs 8th, Sat 10th NEL Both these productions from the very inventive Scratchwork Theatre
Mon 12th Thurs 15th June OUR MAN IN HAVANA Achingly funny farce
Sat 17th - Sunday 18th. June STIMELA THE MUSICAL A South African Lord of the Dance. 7.30 pm + Sunday matinee at 2.30pm
Mon 26th June 7.30 pm SUSAN CALMAN: THE CALMAN BEFORE THE STORM Meet the woman from BBX's News Quiz £21.00
Tues 13th - Sun 23rd July 7.30 pm Sunday 5.00pm
Sat matinee 3.00pm CHINESE WHISPER: Sir Edmund Backhouse, the famous confidence trickster. £18.50 | £16.00

BESPOKE PERSONAL TRAINING

SILVER SENIORS

BOOST YOUR ENERGY | SUPPLENESS | BALANCE

Home Visits | Outdoors
*SPECIAL RATES Tues - Thurs Afternoons**

Email: Daphne@Vanbrughfitness.co.uk
Msc Exercise & Health Behaviour

Saturday 24 June at Charlton House

THE DOG SOCIETY GB
Canine Capers Events
Bringing the Dog Community together

Admission to the event is FREE!

CANINE CAPERS FUN DOG EVENT

The Dog Society GB will hold an afternoon of CANINE CAPERS at Charlton House on 24th of June 2017 at 12noon to 4pm.

Fun and Activities
for your canine friends, dog owners, families and friends.
Stalls, raffle and children's activities!
Competition Entries just £2 each or 3 for £5. Include:

- Waggiest tail
- Grumpiest dog
- Looks most like its owner
- Best recall
- Worst recall
- Best veteran (over 10 years)
- Best puppy (< 1 year)
- Best fancy dress
- Best groomed dog
- Most handsome dog
- Prettiest bitch
- Best trick

Working in partnership with: The Royal Borough of Greenwich, Blackheath & Charlton, Profile Photo Solutions, Kats and Dogs Behavioural & The Dog Mania

Visit our page thedogsocietygb.wordpress.com and follow us

MUSIC

BLACKHEATH HALLS 23, Lee Road SE3 9RQ 0208 463 0100 www.trinitylaban.ac.uk
Fri 2nd June 6.00 pm FREE CONCERT
CONCERT SERIES: FREE, No ticket needed:
Exploring the crossover between music and art:
Wed 28th June 7.30 pm Explore ABSTRACT EXPRESSIONISM in music and art: in the Peacock Room and surrounds, King Charles Court
Thurs 29th June VISUAL ECHOES OF THE OUTER & INNER + Hugo Dalton's projections
Peacock Room King Charles Court
Fri 30th June A SECRET THEATRE Explore synaesthesia through music at the Nat.Por. Gallery.
Sun 25th June 6.30 pm BLACK HEATHER CLUB: DOWN BY THE RIVERSIDE King Charles Court, ORNC. £12.00 | £8.
Wed 28th June 7.30 pm Trinity Laban Symphony Orchestra perform Stravinsky, Rachmaninov & Copeland Cadogan Hall £12 | £8.00 | £5 studs.

GREENWICH MOZART FESTIVAL

Until July 22nd. Philharmonic Chamber Orchestra of London play at St Alfege Church SE10 9BJ Every event at 7.30pm:
Sat 10th June PCOL Wind ensemble play Mozart's Gran Partita and Enescu Dixtuor
Sat 24th June Prodigies: Mozart and Mendelssohn: £15, £23, & £30 Day tickets £10.)
To book: www.london-orchestra.com

GREENWICH GUITAR FESTIVAL

Sun 25 Jun 7:30pm at Our Ladye Star Of The Sea Roman Catholic Church, Greenwich.
Baroque To Guitar Heores: Graham Devine brings His Virtuoso Talent To A Recital Celebrating Solo Classical Guitar Music including Gaspar Sanz, Andres Segovia, & Ponce. Free
25th - 27 June King Charles Court ORNC.
Recitals, Masterclass demos etc.
See full programme by visiting trinitylaban.ac.uk/guitarfestival

AGE EXCHANGE

11, Blackheath Village, London SE3 9L
Tel: 0208 318 9105 www.age-exchange.org
Every Monday: Inspired Caring
Every Thursday: Creative Caring
Sat 10th June Book sale 10 - 4pm
Fri June 16th 1.00-3.00pm Friends Friday meeting: WHO OWNS LONDON? Martin Lake £5.00 Free to Friends
Fri 30th 12.00 - 1.00 pm FREE Concert Bakehouse Theatre with Trinity Laban
PLEASE NOTE NEW DATE (caused by the fact that the General Election is on 8th June):
Wed 14th June 7.00 pm ANNUAL GENERAL MEETING Regency Suite, Clarendon Hotel SE3 0RW Doors open 6.30: complimentary drinks.
Please note: a new treasurer is urgently needed!

MYCENAE HOUSE LIVE EVENTS: JUNE 2017

Fri 2nd June 7.30pm - Adrian Legg. Guitar legend 's solo concert. £14.50.
Fri 9th June 8pm - JazzNights. Candelit Live Jazz music event hosted by Dave Silk featuring Duncan Lamont plus JazzNights Allstars. £10.
Fri 16th June 7.30pm in Mycenae House. Global Fusion on Music and Arts: Amazing singer songwriter Alice Renouf will be launching her new album. £7.
Fri 23rd June 8pm - Icarus Club. An evening of high quality acoustic live music. £7.50.
Thurs 29th June 4pm - Bach To Baby. Classical Concert for families. £10.
Fri 30th June 7.30pm - Global Fusion Music & Arts. Monthly ceilidh & acoustic night with guest Blackbriar. £6.
Sun 23rd July 12-5pm - Summer Sunday Extravaganza. Fun day for the community as part of ParksFest in association with The Friends of Mycenae Gardens with music, dance, children's activities, workshops, food & bar and more. FREE.
For more information about events visit www.mycenaehouse.co.uk

TROJAN PRESS
Printing in Blackheath since 1978
FROM YOUR IDEAS OR ARTWORK WE CAN PRINT AT A REASONABLE COST:
· BUSINESS CARDS
· INVOICES · LETTERHEADS
· BOOKS · BROCHURES
· FORMS · INVITES
· WEDDING STATIONARY

Ia Lizban St
Blackheath, London SE3 8SS
Tel: 020 8853 2268
Email: dave@trojanpress.co.uk
www.trojanpress.com

R.G. Austin



(Established 1963)
Heating Engineers,
Property Maintenance,
Electrics, Painting,
Decorating, Plumbing,
Central Heating,
Shower and Bathroom Specialists

2A Hassendean Rd, Blackheath SE3 8TS
Telephone: 0208 858 7359
rgaustin@fsmail.net

MUSICAL THEATRE

STRATFORD CIRCUS Theatre Square, London E15 1BX Tel. 8279 1001 Tickets: £10.00 | £5.00
TRINITY LABAN Musical Theatre perform:
URINETOWN Thurs 15th/ Fri 16th June 7.30
Sat. 17th June 2.30 & 7.30 pm A drought's impact on the human race
MADE IN DAGENHAM Fri 23rd 7.30 pm Sat 24th 2.30 & 7.30 pm -Sun 25th June 3.00 pm The women get Uppity at Ford's Dagenham plant!

BLACKHEATH CHOIR & ORCHESTRA

Sun. 2nd July 7.30pm Dvorak: The Spectre's Bride + Songs of Nature St Margaret's Church, Brandram Rd. £12 in advance – tel 07921 295430; email: tickets@blackheathchoir.org.uk (£16 on door)



Learning is fun

St Olave's is a Prep School in New Eltham for boys and girls aged 3-11 years

- Broad, child-centred curriculum
- Excellent results in the 11+ selection
- Clubs, outings and residential trips
- Excellent pastoral care
- Small classes
- Specialist staff for PE, IT, Music, French and Drama
- Sibling fee reduction
- Before and after school care

Tel: 020 8294 8930
www.stolaves.org.uk



ENVIRONMENT



Planning applications can be viewed in the library, or at the Woolwich Library on the lower ground floor of the Woolwich Centre, 35 Wellington St. They may also be viewed on www.greenwich.gov.uk/planning

Greenwich Park Revealed Marilyn Little

The Royal Parks are applying for a multi-million pound Heritage Lottery Fund Grant specifically for Greenwich Park. HLF Grants focus on positive outcomes for People and Communities but most importantly for Heritage, and the project they fund has to be complete in 5 years.

The Fund has a list of 10 outcomes that it expects applications to address. These outcomes are achieved by improving, maintaining and protecting aspects of our Heritage and educating people about it.

A number of areas in the Park have been identified as needing urgent improvement.

- Many of the trees in the avenues are disease-ridden and some are damaged. A programme of replacement needs to be undertaken, with more disease-tolerant varieties that will also cope with climate change.
- The area around the Wolfe Statue becomes very congested in the tourist season and ways of extending access to the magnificent views needs to be investigated while reducing erosion below that area.
- The boating lake needs a sustainable water supply to remove its current reliance on a mains supply and the fabric of the lake needs to be repaired to stop the current leakage.
- The flower garden would benefit from a discreet visitor centre that could be used for educational visits or just for general information. Improvements to the lake would make it more sustainable

and attract other forms of wildlife.

These are only some of the areas under discussion and further works have been identified.

Open public meetings have been held and ideas have been put forward at these well attended gatherings.

Other presentations on Heritage, Education and Landscaping have been held with The Royal Parks and local groups, including the Westcombe Society, have been represented. An Advisory Group of local groups and societies has been set up to allow comment, input and feedback, again the Westcombe Society is part of this body.

The Project is working towards a Stage 1 submission in August that will, if successful, provide funds to progress to the Design and Develop stage. A decision will be made by December.

We are very fortunate to have such a wonderful asset on our doorstep and if you have any ideas that could be taken forward as part of the Project, do look out for further open meetings or let us know via info@westcombesociety.org. We will be happy to share your ideas with the Project team.

More information is available on the Greenwich Park website

<https://www.royalparks.org.uk/park-management/conservation-and-improvement-projects/greenwich-park-revealed-project>

Members of the Westcombe Society were able to hear an illustrated talk by Graham Dear, the Park Manager, at our AGM on the 12th May.

Trees matter Maggie Gravelle

The Westcombe Park Conservation Area is characterised by the number, size and variety of its trees. Much of the responsibility for maintaining this lies with Debi Rogers, the Royal Borough's tree officer.

Debi has been with the council for 30 years, the last 20 of them as tree officer. The Westcombe News recently met with Debi to find out more about her role and about the regulations regarding trees in conservation areas.

All work to trees which are more than 7.5 cms in diameter at 1.5 metres above the ground has to be notified to the Planning Department. Debi advises that anyone considering work on trees should engage a reputable tree surgeon who will provide the council with exact details of the work to be undertaken. This would include the location of the tree and photos where possible.

The council then has 6 weeks to respond before the work can go ahead. Many applications are straightforward but the officer may want to make a site visit.

The council has the power to place a Tree Preservation Order (TPO) on a tree or group of trees. This would prevent felling, lopping or damage to the tree. Debi was clear that her powers are limited, even in the case of TPOs. The main criterion is that the removal or lopping of the tree would have a significant impact on the local environment and that protection would be of public benefit.

This requires the tree should be 'visible from a public place'. In granting or



Unlike the nearby houses, this beautiful oak tree in Beaconsfield Road survived the Blitz.

enforcing a TPO Debi is required to take into account the size and form of the tree, its rarity or historical value as well as its contribution to the landscape and character of the conservation area. In the case of a protected tree no work can start until permission has been granted and the council has powers to require the replacement of a tree that has to be felled.

The granting of consent to do work on a tree does not imply a legal right to carry out that work. If the tree is not on the applicant's property the applicant may need to get permission from the land owner on whose ground the tree stands in order to carry out the work.

Debi was keen to stress that applications are treated sensitively and that neighbours are encouraged to co-operate. There is no charge for making an application and she is willing to give advice.

Debi Rogers can be contacted at Planning Department, The Woolwich Centre, 35 Wellington Street, Woolwich, London SE18 6HQ or by phone on 020 8921 5661.

Is education happening?

Yes. Michael Oakeshott famously said that education was a conversation between generations. In recent times a considerable gap has opened up, because children see a different world with different emphases and fashions. This makes education very difficult. Parents need to do everything they can to "talk the same language as their children". Schools need to do everything they can to win the trust of pupils. Without these moves much teacher talk in classrooms is a waste of time.

The P E R Group's new website: www.perprospero.co.uk

The New Planter

This year, the Royal Borough of Greenwich supplied this planter at the southern tip of the Standard. At first the flowers weren't helped by the shortage of rain – but then the heavens opened . . .



Susan Clark Interiors



113 Humber Rd
London SE3 7LW

Construction to complete renovation
Project Management • Interior Design
Upholstery • Joinery • Lighting
Curtains • Blinds • Paint
Antique Furniture • Gifts • Cards
sales@susanclarkinteriors.com
www.susanclarkinteriors.com
0208 305 2299

BESPOKE PERSONAL TRAINING
SILVER SENIORS
BOOST YOUR
ENERGY | SUPPLENESS | BALANCE
Home Visits | Outdoors
SPECIAL RATES Tues - Thurs Afternoons
Email: Daphne@Vanbrughfitness.co.uk
Msc Exercise & Health Behaviour

A & A LANDSCAPES Landscape Specialists



Free advice & estimates



Qualified horticulturalist

All aspects of soft & hard landscaping work carried out including
* Maintenance * Site clearance
* Turfing * Tree surgery
* Fencing * Patios
* Brickwork

Tel. 020 8318 2530

Childcare for ages 3 months – 5 years

I can see a great nursery from here



If you're looking for a nursery that will help your child to grow and develop – choose Zoom Nurseries.

At Zoom every child enjoys an individual Learning Journey. A record that tracks their daily progress through our fantastic fun-filled learning environment.

It's just one of the tools we use to keep our parents up-to-date with their child's achievements, as well as their personal, social and emotional development. It's an important tool, one that helps us ensure that when they leave Zoom to start school, they leave as independent learners and thinkers, ready for the challenges ahead.

With five nurseries in **Eltham, Hither Green, Blackheath** and **Brockley** that between them have four Ofsted 'Outstanding' judgements, and places available, you don't have to go far to give your child a great start.

To find out more and arrange an informal visit please call **Ann Briley, Assistant Childcare Director** on **07816 413718** or email annbriley.zoom@gmail.com



Or visit our website for more details www.zoomnurseries.com

MARKET PLACE

ACCOMMODATION

GOOD RELIABLE HOST FAMILIES wanted for foreign students. For more info. please contact Lynne on 01732 822649 or email sesgreenwich@aol.com

ROOMS FOR HIRE

FUNCTION ROOM FOR HIRE
Blackheath area, up to 150 people, Bar, disabled access. Tel.07940 296290

GARDENING

GARDEN MAINTENANCE: mowing, weeding, pruning, communal garden contracts, fruit and vegetables, gardening tuition, RHS qualified, also domestic cleaning. Call John and Rachel on 07746 121510

HOLIDAYS

WHITSTABLE WEEKENDS / WEEKS Sea wall house between Oyster Warehouse and Harbour. Sleeps 5. Fantastic views. 8858 6578 or 013 04 367443

PERSONAL CARE & THERAPY

BLACKHEATH HOLISTIC HEALTH SERVICE.
Counselling, Psychotherapy, Yoga
Westcombe Park <http://www.bhhs.selondon.co.uk>
Tel: 020 8858 1991

COUNSELLING FOR CREATIVE PROFESSIONALS. Speak to Jon Edge, MA, MSc, UKCP, BACP Registered. 0788 777 8360

ALLERGY TESTING & HOMEOPATHY
Are your allergies and health problems getting you down? Phone or text to book a FREE 15 minute phone consultation Registered Allergy Therapist & Homeopath Monique Wentworth 07757 478567 www.allergytestinglondon.co.uk

SERVICES & TRADE

TRAINED CHIMNEY SWEEP & STOVE INSTALLER
Fast, friendly Happy to work! Call Anthony on 07772 649577 or email: chimneymaintenance@gmail.com
INTERIOR DECORATOR & CARPENTER with over 20 years experience. A member of the guild of mastercraftsman. Free quotes & friendly advice on all your decorating requirements. Local references available.Tel. Ashley Greaves 8858 2981

JK Auto Services
All makes of vehicles serviced
— Saab Specialist —
Tyres & Exhaust Fitting Service
—
Air Conditioning
Re-gas & Servicing Facilities

Unit 52, New Lydenburg Industrial Estate,
New Lydenburg Street,
Charlton SE7 8NF
Tel: 020 8293 1511

HAVE YOU GOT THE SKILLS – OR TIME – FOR DIY?
Or is it all just such an effort!
If that's your problem, I can solve it !

- * Decorating including preparation, wall- papering, painting, & special finishes.
- * Re- hanging doors and putting up shelving.
- * Re-laying floors-lino, wood laminates and ceramics.
- * Domestic Electrical work.
- * Plumbing - taps, showers,radiators and external.
- * Garden revival and maintenance

Need help with any of these?
Please call
Tony: 0208 856 9398 M: 07961 540836
<http://www.tonysdiy.com/>

HOMEWORKS
All-round handyman for those DIY's you have no time for! General repairs. Painting & Decorating. General Carpentry and flooring. Flat-pack assembly. Patio and deck cleaning. No job too small. Contact Matthew Barron 07903 388658.
MARK CHEESEMAN, LOCAL CARPENTER AND JOINER with 30 years experience. All aspects of carpentry and construction carried out considerably and to a high standard. Reinstatement of original Victorian/Edwardian/Georgian details, ie shutters, skirtings, plinth blocks, picture rails, cornices etc. Bespoke joinery, wardrobes, cup-boards, stairs, kitchens. Sash windows overhauls. Resin timber repairs. Please call M: 07767 456131 or H: 020 8854 4028
S.S.D PLUMBING AND HEATING Friendly local plumber available for free estimates and advice. All works undertaken, no job too small, from boilers to bathroom suites, all works viewed within 24 hours, fully insured and new work guaranteed. Call today on 07931 536533 or 8305 1039 ssdbuilders2@hotmail.com
UPHOLSTERER SPECIALISING IN TRADITIONAL UPHOLSTERY www.suemayesupholstery.net or phone 07932 040298
S.S.D DAMP PROOFING SPECIALISTS in the treatment of RISING & PENETRATING damp. Repair/ renewal of rotten structural timbers as a result of damp. Chemical injection and render using tried and tested systems. Specialists in providing horizontal and vertical barriers against damp/ water ingress. Please contact us for a free consultation and written estimate. Mob: 07931 536 533 Land: 020 8305 1039
PUBBLE PLASTERING Need a plasterer with excellent references? Work is of high standard. Qualified C&G. Plastering-Rendering- Plasterboarding - Repairs. Free quotes! Call Alex on 07547 468459 / 0203 092 0684 pubbleplastering@googlegmail.com
LOCAL CARPET/OVEN CLEANER Specialist in cleaning Carpets & Ovens, Upholstery & rugs. Competitive rates. Email: adam@carpetcrew.co.uk M: 07828503132 <http://www.carpetcrew.co.uk>
T.TA ELECTRICS. NICEIC Approved Contractor, Quality Tradesman. All electrical work undertaken, Fully Insured & Guaranteed. 24HR EMERGENCY ELECTRICAL. Please call Tony on 07961 509 403 OR 020 84887425 OR info@ttaelectrics.co.uk
REPAIRS & ALTERATIONS:
School trousers, Blazer sleeves shorter, Hems, Darts in Dresses and Jackets re-lined etc.
Call: 07904 880 448
obligation quote call Martin on 07821403577
AIR CONDITIONING & ELECTRICAL WORK
Fully qualified engineers CSCS Tel: 07419 312547
C.S. CARPENTRY-JOINERY
Decorating and all building work undertaken. Joseph McNamara 8857 5480, mob. 07947155366
ELECTRICIAN / ALARM ENGINEER
No job too small TMIET registered. Call 0787 9011792
A MAN AND A VAN Tel: 020 8858 3889 Mobile: 07885 917842
MALCOLM TIERNEY, CARPENTER
Specialist in refurbishment, repair and replacement of sash windows. 0777 5657371
TYPEWRITER ENGINEER selling portables/repairs Dinsdale Road Tel. 0208 488 2713 / 07376325107

Our Summer Show
is on
Sunday 11th June
11.00am - 4.30 pm

- * Come and meet our animals!
- * Buy quality local produce at reasonable prices, including home-made preserves, cakes & honey.
- * Relax in our café to live music by The Short 'n Curlies
- * Craft activities & games
- * Displays of country crafts such as sheep-shearing & rural crafts

Entry is free, donations welcome.
Please note: there is no parking on the farm, please use public transport.
A great family day out!

JEWELLERY AND WATCH REPAIRS AND VALUATIONS from Michele Franklin. British Jewellers Association accreditation 07809 502 714 Michele@personaljewellerylondon.co.uk
S.S.D BUILDERS LTD.
Long established Building & Roofing Company available for free estimates & advice. ALL works undertaken, from guttering to Refurbishments. All works viewed within 24 hours, fully insured & new work is guaranteed. Call us today on 07931 536533 or 0208 305 1039 ssdbuilders2@hotmail.com
PHONE/BROADBAND SOCKETS.
Improved Broadband speed plates, Fault Finding Repairs, New Extensions, Tidying of cables. 25 yrs BT, Insured. 07845 705900
SUNSHINE WINDOW CLEANING For a no-obligation quote call Martin on 07821 403577
WESTCOMBE CLEANERS I'm a friendly, hard-working & organised domestic cleaner. Regular or single services. Competitive rates. Additional tasks. I love my clients to be happy. Phone 07746 291617
LOCAL DRESSMAKER: Hand made in London Providing clients with a Bespoke garment, Wedding, Prom & Party dresses especially for Babies, Children & Adults. Call: 07904 880 448
DECORATING, ELECTRICS Plumbing and Property Maintenance. Est, 25 years. References available. Phil McNamara 8857 5480, mobile 07814 360862
PEST CONTROL SERVICES All types of pests dealt with including fox control. Call John 0208 300 3496

TUITION

ITALIAN TUITION Native Italian teacher offers lessons at all levels.Preparation for GCSE, A-LEVELS courses, Grammar, Conversation Tel 07788 743371
MATHS & ENGLISH TUITION and preparation for 11+ and independent school selection tests by qualified and experienced teacher.marystuition.com Mary Bauckham 07709089838 mary.bauckham@virgin.net
ENGLISH/PRIMARY/11-PLUS TUITION All ages welcome. GCSE, A/S-Levels, Common Entrance, Primary, etc. Fully qualified, experienced teacher. Call Hellen Halliday BA(Hons), PGCE on 020 8858 7704 / 07928 017762 to discuss how I can help.
SHOW YOUR COMPUTER WHO IS THE BOSS
Are you looking for some extra help working with your computer? Need some help with your digital photos, online shopping and the jargon? To discuss the options, call Paul on 07958 251448 or email paul.clayton@soulchip.co.uk
MATHEMATICS, PHYSICS AND PSYCHOLOGY TUITION Ex Head of Department with 20 years experience providing support through CE, GCSE, IB, GCE/STEP and degree studies. All boards and levels. SEND and G&T specialist. Full access to all academic resources. T: 07497 828247 E: blackheathmaths@gmail.com
Website: blackheathmaths.com
RUSSIAN TUITION. Russian-speaking university lecturer offers lessons at all levels (including university, business and conversation) in your home/office. Tel.: 07766 531401
SPANISH TUITION all ages and levels, GCSE, A levels , conversation, literature, by Latinoamerican native speaker. Please contact Miguel at migansiergut52@gmail.com or 07910318513
MATHS TUITION
Qualified and experienced secondary teacher offers tuition to GCSE level.Call Miv Whitaker: 07745816338; or email miv.whitaker@fsmail.net
NEED HELP WITH YOUR COMPUTER?
Local technician provides home technical support & tuition. No job too small, all in your own home. Ring Glenn: 8473 4091
MULVIHILL ACADEMY OF IRISH DANCE
Adult and Child Irish Dance Classes available in the Blackheath area. Come along for a fun-all-in-one workout. For more information call Rachel on 07707 100521
LOCAL PRIVATE TUITION:
1-1 or small group tutoring in English and Maths Key stage 1 and 2. PGCE Qualified Teacher. Call: 07904 880 448

ELECTION:
June 8th: Don't forget to vote!

Please send ads for the Market Place with payment by the 10th day of the preceding month to:
Marilyn Little, 163, Westcombe Hill, SE3 7DP
8853 1312 Advertising@westcombesociety.org
ALL classified adverts 30p per word. Please make cheques payable to The Westcombe Society

BUY LOCAL!
Discounts available on production of your Westcombe Society membership card.

BLACKHEATH VILLAGE: PARES FOOTWEAR
10% OFF all shoes over £20, excluding sale stock
RAFFLES DESIGNER WEAR.
10% OFF all non-sale goods

THE VERB SHOP 10 percent discount on all copywriting and content creation. Free 1 hour assessment of your marketing material.

GREENWICH: NORTH POLE RESTAURANT
12.5% OFF Meals only for two
3D DIVING 10% discount on all scuba diving courses. Offer excludes scuba diving equipment.
GREENWICH COMMUNICATION CENTRE
at 164 Trafalgar Road: 10% Discount on all Computer Maintenance & Repairs (inc Tablets & Smartphones)
www.greenwichcc.com T: 02082692103

HUMBER ROAD: BODYWORKZ - THE FITNESS CLINIC
109 Humber Road.10% OFF all treatments costing £30 or more except Chiropody; exc.Saturdays.
ROYAL NEPALESE RESTAURANT
(Station Crescent) 20% OFF meals for two or more Sunday - Thursday.
THE CURIOUS COMB
10% discount on services over £30 Weekdays 8am-10am, 2pm-4pm (excludes retail purchases).
CORIANDER RESTAURANT (Station Crescent) 25% off Sunday to Thursday. Bookings only!

THE STANDARD: COTON & HAMBLIN - OPTICIANS
£65 off complete spectacles
KARAN CHEMIST 10% OFF Weds. only
BLACKHEATH EYECARE OPTICIANS
20% off 2nd pair of spectacles. (Same prescription). Not in conjunction with any other offer. (Complete glasses start from £49.95 with single vision lenses). 5% off contact lens solution and accessories. <https://www.blackheatheyecare.co.uk/>
TROJAN PRESS 10% OFF all quotations

WESTCOMBE HILL A * DRIVING SCHOOL £5 discount on the price of one x 2 hour lesson for WS members.
THE WONDER WOMEN NETWORK 10% discount

WESTCOMBE PARK ROAD KAREN STOREY OF HOMESPACE offers members 10% discount on decluttering & homestaging services 0844 846 5854 www.home-space.biz

PENINSULA SHENDA FALVEY PERSONAL TRAINING & BOOTCAMPs Free bootcamp session at Greenwich Peninsula worth £10. Book to secure place (excludes existing customers) 25% off first personal training session plus free consultation M: 07887 727 335 www.shendafalveypersonaltraining.com

WRISTWORTH HEATING & PLUMBING
Installation - Servicing - Repair
Tel: 07725 008280
Email: wristworth@hotmail.co.uk

Check Out Our **NEW** Website: wristworthheating.weebly.com

GRANT SAW
SOLICITORS LLP

For You & Your Family:

- Divorce and Financial Settlements
- Children Disputes
- Residential Property- sales and purchases
- Transfer of Equity
- Leasehold Extensions and Enfranchisement
- Wills and Probate
- Lasting Powers of Attorney

For Your Business:

- Commercial Property
- Sites for Redevelopment
- Commercial Contracts
- Mergers and Acquisitions
- Dispute Resolution
- Court and Tribunal Proceedings
- Insolvency

E-mail: enquiries@grantsaw.co.uk
www.grantsaw.com

Greenwich Office Norman House 110-114 Norman Road Greenwich, London SE10 9EH
Blackheath Office 9 Hare & Billet Road Blackheath London SE3 0RB
Tel: 020 8858 6971

THE POINTER SCHOOL

An independent co-educational school for pupils aged 3 to 11 years

"We believe that, with love, guidance, encouragement, discipline and hard work, every child can do so much more than he or she may consider possible."
Mr RJS Higgins Headmaster

Nursery - Year 1 37 Shooters Hill Road SE3 7HS Tel: 020 8858 7977 earlyyears@pointers-school.co.uk
Year 2 - 6 19 Stratheden Road SE3 7TH Tel: 020 8293 1331 secretary@pointers-school.co.uk

www.pointers-school.co.uk

LEARNING FOR LIFE