



Westcombe NEWS

Free to 3800 homes, & in libraries & some shops

May 2017 No. 4



A community newspaper commended by the London Forum of Amenity & Civic Societies

New proposals shock rail users

In the words of the old song: "There may be trouble ahead ..." We have already permanently lost direct services to Waterloo and Charing Cross from stations on the Greenwich Line; are we going to lose them from Blackheath too?

Might this also mean that recently published proposals to run Thameslink services through Greenwich will be axed? In the current consultation document on the SE Rail Franchise there is a section on "simplifying" the SE rail network "to improve reliability."

The proposals include: "An example might be for all Metro Services on the North Kent (between Dartford and Charlton) Greenwich and Bexleyheath lines to terminate at Cannon Street only."

As many of the 2 million people who used Westcombe Park and Maze Hill in 2015/16 already know, changing at London Bridge has never been easy and even with the new escalators at London Bridge the change won't be particularly convenient even when all trains stop at London Bridge again. Many travellers may hope they can continue to cross the heath to catch a train at Blackheath. With these proposals this option would be closed.

Perhaps even more importantly many passengers need the Blackheath service to Victoria and other places in South London, such as Kings College Hospital.

The relevant question (Q.17) in the consultation document reads as follows: "How far do you support, or oppose, options to reduce the choice of central London destinations served from individual stations with the aim of providing a more regular, evenly spaced timetable, and a more reliable service?"

The question gives no indication of what "greater reliability" might mean. But many passengers might think the benefits of greater reliability suggested would be massively outweighed by the inconvenience and additional time incurred by having to change trains or travel via Central London in order to reach Nunhead, Peckham Rye or Denmark Hill.

Mike Sparham from the Greenwich Line

Users Group says "Many passengers in the Westcombe Park and Royal Standard areas use Blackheath station for direct services to Waterloo, Charing Cross and Victoria. Diverting these services into Cannon Street would be a retrograde step. The move is not operationally necessary and would remove choice from passengers."

The Department for Transport is inviting responses to its consultation on the South Eastern Rail Franchise and the Westcombe and Blackheath Societies are both keen for as many people as possible to respond. The

consultation document is at: <https://www.gov.uk/government/consultations/future-of-south-eastern-rail-services>. Further details on recent rail consultations and a link to the consultation document can also be found on the www.westcombesociety.org.

The consultation page above has also a click through to an online questionnaire which can be downloaded and printed if you prefer a paper copy.

The questionnaire is fairly long and takes about 20 minutes to complete, but the conditions DfT attaches to the franchise on service levels, rolling stock, station staffing, and ticketing are of crucial importance to passengers.

This consultation provides an opportunity to make the case for extra capacity, improved access for those people with disabilities, better regulated evening services and improved communications.

The Blackheath Society suggest that if you only wish to answer the question about simplifying the Bexleyheath (Blackheath) Line services it would be quicker and probably more effective to email the DfT on this topic directly on BetterSouthEastern@df.t.gsi.gov.uk.

Please give your name and postcode in your email. We would also appreciate a copy being sent to environment@westcombesociety.org to give us some idea of the number of responses from local residents. Responses must be submitted by 23rd May 2017

A petition on this threat has been set up at <https://petition.parliament.uk/petitions/190894>

Emily Norton

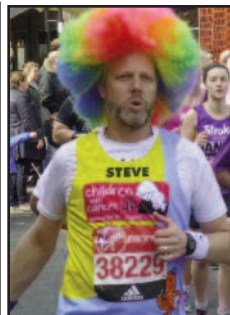
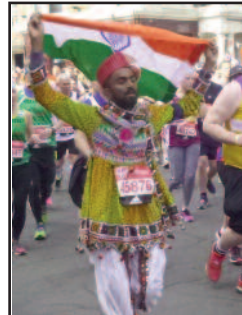


PHOTOS: Neville Grant

Yet again Greenwich saw the start of the Virgin London Marathon – a huge success, with nearly 40,000 runners from 110 nations, making it one of the biggest in the world. Now 37 years old, it is not just one of the six World Marathon Majors: it is also a huge feel-good sporting festival that has, astonishingly, raised over £830 million for charity since 1981. A number of locals took part this year; so if you were among the many thousands who lined the route you might have seen Andy Chapman, Chair of the Vanbrugh Community Association (which runs Mycenae House), who is raising funds for Shelter; and Emma Manton, the actor, who is raising money for Syrian refugees. (See Feb.'s *WN*.)



Good advice from the spectators – but did the runners take any notice?



Kim Jong-un's Blackheath Hideaway

Even the *WN* couldn't make it up: and as it's May, it couldn't possibly be an April Fool.

A report in the *Sunday Times* of April 23rd. indicates that North Korea is suspected of using a house in Blackheath to help to fund the regime of the dictator of North Korea, Kim Jong-un.

A property in Blackheath has been registered as the UK's branch of North Korea's state-controlled insurance firm, the Korea National Insurance Corporation (KNIC). The address of the property is disclosed on the EU's sanctions list, which states the KNIC is "generating substantial foreign exchange revenue which could contribute to nuclear-related, ballistic missile-related or other weapons of mass

destruction-related programmes."

According to the *Observer*, KNIC is registered to a detached property on Kidbrooke Park Road. Its entry on Companies House now describes KNIC as "closed" since 6 October 2016. In 2014 it had total assets of 130bn North Korean won, the equivalent of £113m.

The British treasury has frozen KNIC's assets, and the Blackheath house cannot be sold without the permission of the government. The North Korean Embassy says the allegations are "groundless."

However, many are raising questions about how many other unacceptable regimes or individuals are using London for money-laundering purposes, or for other questionable financial activities.



Newsbriefs



Ranger's House

English Heritage have new plans for Ranger's House. The idea is to replace the guided tours with "free flow", and are seeking to recruit over 100 volunteers. From July 1st, the plan is to open the house from 11.00 am to 4.00 pm from Sunday to Wednesday each week, running until the end of September. All guides will be taught the history of the house and its collections as part of their induction training. Interested? Please contact Christopher.Small@English-heritage.co.uk

Royal Hill garden saved

In Feb.'s *WN* we reported that a derelict car park at the foot of Royal Hill that has been turned into a community garden was under threat to create space for housing.

Campaigners managed to amass 2000 signatures in support of the garden, and forty local residents presented their case at a white-knuckle meeting of the planning

committee: the Council's proposals were turned down by six votes to five. Jonathan Mantle, co-founder of the project with Tony Othen, said: "It is extremely unlikely that the application will be resubmitted."

Tunnel Vision

Those who have doubts about the usefulness of the Silvertown Tunnel are hoping that the proposed new tunnel under the Thames from Tilbury to Gravesend may relieve pressure on both the Dartford Crossing and the Blackwall Tunnel – and make the Silvertown project unnecessary.

Greenwich Winter Night Shelter

Many local volunteers were delighted to take part in a service of thanksgiving, and party, at Christ Church, East Greenwich, to mark the end of this year's programme for homeless people. Also present were the new Bishop of Woolwich, Bishop Karowei, and Mrs Karowei. Welcome, bishop, or, as they say in Nigeria, *Ekabo!*

Sad news

The *WN* is sorry to report that in April, a woman was raped in Sutcliffe Park. In a separate incident, Jordan Wright, 19, was stabbed to death near Hervey Road. A local resident said: "It's just horrible. Things like that don't happen around here. It's always very quiet."

Greenwich & Docklands International Festival

This year's festival will span 3 weeks from Friday 23 June - Saturday 8 July. They say it's going to be the biggest GDIF yet!

Each summer GDIF recruits a team of fantastic volunteers who help with a range of activities from brochure distribution to stewarding and artist liaison and much more besides. If you require further information on the volunteer role or application please contact Cleo Ingham at: volunteer@festival.org or ring 020 8305 5023; or just visit the GDIF website.

Westcombe Society Westcombe Society AGM for members

Friday May 12th at 7.30 pm.

in The Centenary Room,
Blackheath High School for Girls,
Vanbrugh Park
by kind permission of the Head,
Mrs Carol Chandler-Thompson

Including a talk by Graham Dear
on the future of Greenwich Park

The Agenda is on page 2.

Sat 10th June 7.30
Members' Evening

All members of the Society are invited to
this social event.

WESTCOMBE NEWS

ALL EDITORIAL CORRESPONDENCE TO:

Neville Grant, The Editor
wnews@westcombesociety.org
Tel. 020 8858 8489

ALL MATERIAL TO BE SENT TO: wnews@westcombesociety.org

Deadline for the June issue: 16th May
Environment Editor: Maggie Gravelle
What's On:
Reporters: The community – that means you!

ENVIRONMENT COMMITTEE
Emily Norton All queries and comments to: 020 8853 2756
environment@westcombesociety.org

DISTRIBUTION Emily Norton and volunteers.

Volunteer distributors please phone 020 8853 2756, we need your help!

ADVERTISING MANAGER
Marilyn Little, 163 Westcombe Hill, SE3 7DP 020 8853 1312
Advertising@westcombesociety.org

All adverts payable in advance by cheque to **The Westcombe Society**.
DISPLAY: Single column 6cm x 6cm:
One - four issues £35, five-plus issues £30 each. Other sizes: please inquire.
Classified Ads (Market Place) 30p per word (A telephone number = one word. An email/web address = 3 words.) Deadline for all adverts is 10th day of the preceding month.

Printed by: Trojan Press

Contact the Westcombe Society:
WestcombeNews@egroups.com
Publisher: The Westcombe Society
Chairman: Marilyn Little
Tel. 020 8853 1312

The views expressed in the Westcombe News are not necessarily those of the Westcombe Society or of the Editor. We take all reasonable precautions to protect the interests of our readers by ensuring as far as possible the bona fides of our advertisers but cannot accept any responsibility for them. Any complaints should be addressed to the advertiser.

*To access back-numbers (in colour) go to:
www.westcombesociety.org/westcombe-news/*

*Westcombe Society's Blog:
http://westcombe.blogspot.com*

WESTCOMBE SOCIETY MEMBERSHIP

Please send this membership form to:
Christine Legg, 69 Mycenae Road,
London, SE3 7SE

Name.....

Address.....

.....

Tel.....

Email:

Please enclose payment as appropriate:

Family Membership	£12	[]
Individual Membership	£8	[]
Senior Citizens/unwaged	£4	[]

IT SUPPORT

For ALL your home & business needs
Call now for FREE advice

headstart
IT Solutions

020 8858 2002

www.headstart.it

Westcombe Society AGM

Friday May 12th at 7.30 pm.
in The Centenary Room, Blackheath High School for Girls,
Vanbrugh Park by kind permission of the Head

AGENDA

- 1 Welcome, and apologies for absence
- 2 Minutes of last AGM & matters arising
- 3 Brief reports:
*Chairman *Events Cttee *Environment Cttee *Westcombe News
- 4 Treasurer's report & presentation of audited accounts
- 5 Election of new committee
- 6 Charity of the year 2017 - 2018
- 7 Any other business
- 8 **Graham Dear, the manager of Greenwich Park, talks about the Greenwich Park Revealed Project**
- 7 Wine and nibbles.

All members of the Westcombe Society are warmly invited to attend the AGM. Not a member? Now is a good time to join. Just turn up, and join on the spot!

Easter Egg Hunt



This great family event took place on Easter Saturday in Mycenae Gardens and the weather was fine and sunny (at

times!) Over 120 children attended and hunted for eggs. A tombola and cake stall were on hand, as was a face-painter to decorate young faces.

Beautifully decorated baskets and hats won lots of well-deserved prizes.

It was a lovely happy day, very well organised by the ladies of Westcombe Hill & their families. Well done and thank you.

RIGHT: Jenny was among the winners!

PHOTOS:
Di Blackwell



AGM of Friends of Mycenae Gardens

The Friends of Mycenae Gardens held their AGM on 22 March. The new chair, Mark Barnes, noted that in the early years of the group, such meetings had been crowded and debate 'lively'. Recently, as the group adopted a more active role in maintaining and improving the gardens, attendances and the temperature at the AGMs have both decreased.

He hoped the decrease reflected growing confidence in the work of the group, but noted that local support was even more essential, in order to undertake that work.

The meeting was instead enlivened by Tim Hoe's presentation of the achievements of 2016, including the backbreaking decompaction work carried out by some members of GoodGym.

Much of this had been organised by the three retiring members of the committee,

Eileen Bell, Shirley Broughton and Ann Hill. They were thanked for the energy and enthusiasm that they have devoted to the gardens. Dick Allard and Mara Lemos-Stein were elected to replace them.

The increased role of the group in the maintenance and improvement of the gardens reflects the policy of the Royal Borough of Greenwich to devolve some responsibility to such groups.

In effect, local communities are being asked to play a part in preserving and enhancing their open spaces. The group is keen to secure support and participation of more members of our local community, young and old.

*If you are interested, please sign up for (free) membership at
<https://mycenaegardens.org.uk/>, or use the contact form on that site.*



Letters

Any views expressed are personal, and are not necessarily those of the Westcombe Society or the WN.

From: Mike Sparham Greenwich Line Users' Group

Southeastern are consulting about their timetable from January 2018, when the work at London Bridge is completed and Cannon Street services can stop there again.

Unfortunately, the changes proposed are minor and overcrowding on this line is set to get worse. Last year, five peak services were diverted away from Greenwich in each direction and anybody travelling at peak times will know how busy the remaining services are.

With trains stopping at London Bridge again, they will get even busier, and the pre-2016 peak time frequency should be restored. Readers may be surprised to hear that this consultation was open until 29th April – it was not nearly as widely publicised as it should have been – but it may still be worth sending comments to timetablemanagement@southeasternrailway.co.uk The DfT's other consultation is about the new franchise, beginning in December 2018.

One proposal DfT have floated is that all services on the Bexleyheath line (via Blackheath) should run only to Cannon Street, as is the case on the Greenwich line.

Many passengers in the Westcombe Park and

Royal Standard areas use Blackheath station for direct services to Waterloo, Charing Cross and Victoria. Diverting these services into Cannon Street would be a retrograde step. It is not necessary and removes choice from passengers. Comments on this consultation can be sent to BetterSouthEastern@dft.gsi.gov.uk by 23 May **Ed: See also page 1 of this month's WN.**

From G. Bailey Westcombe Park Road

In last month's *WN*, the Council's new plans for Charlton Riverside were outlined.

Historically, Charlton Riverside has been an important industrial hub, which was largely destroyed during the blitz, as your story of the bombing of Invicta School mentions.

Today, the area is host to a large number of small businesses - workshops, studios, printing works, light industry – and provides a significant amount of local employment opportunities. Yet the plans seem to envisage the whole area being turned round for residential use; where will all the new residents be working? Is it to become a dormitory for those working elsewhere? I do hope that the Council has plans to relocate all these small businesses.

Quiz Night April 1st.

No fools turned up for quiz night on Saturday 1 April! Apparently the questions were rather difficult this time and you could practically hear the power of concentrated thought!

The top marks were not so very far ahead of the bottom, so every team did well in some of the rounds. Three teams contested the second place and, to add to the excitement, a tie-breaker was needed.

It was very good to welcome some new teams this time: not surprisingly the younger ones were particularly good on the round involving questions about the internet.

Staff from the Fisherman's Inn turned up exactly on time with the tasty fish and chips – much appreciated!

Congratulations to Marilyn Little and her team, from Westcombe Hill, who won this time! And in particular many thanks to our Quiz-Master, J-J Aune.

St George's, Glenluce Rd. Westcombe Park

Sundays: 11.00 am Children's Church
11:00 a.m. Holy Communion (All Age service 1st Sunday of each month)
Wednesdays: 8:30 a.m. Morning Prayer
12:30 p.m. Soup Lunch Fellowship

Sceptics Group meets at 89 Westcombe Pk Road) 1st & 3rd Sunday each month

Special Events in May
Wed. May 17th 7.30 at St George's:
Spiritual Film Night: The Spirit of '45 (2013) Ken Loach film about the vision of a more caring society in the wake of WWII.

Contact: Revd Tim Yeager
rtyeager@gmail.com Tel. 07804 614245

Correction: In our piece about Myles Dove we were misinformed about him wind-surfing in Portsmouth Harbour. We should have said Portland Harbour, in Weymouth. Much better location for wind-surfing, Dorset!



The Westcombe Society presented this mimosa to Myles Dove and Barbara Henley to thank them for all their work managing the distribution of the WN for so many years.

Myles reports: "I thought your readers would be glad to hear that the tree is flourishing!"

As is Myles, who continues to do his share in distributing the WN. A real trouper!

LOCAL NEWS

Community Poetry

Barbara Ward

On the evening of 31st March 2017, West Greenwich Library Creative Writers Group gathered to perform their work in an evening of poetry, prose and music.

A truly wonderful event with many talented writers, both published and first-time, performing their poems. The audience were treated to interactive poetry, life-writing as poetry, all heartfelt slices of member's lives.

We heard an ode to abandoned Christmas trees, declarations of love, remembered letters, a mother's view of parenting. For myself, the best of all were the joyous poems of a Maudsley Mental



Hospital worker who wrote poems full of hope, to read to patients and inspire them.

Bravo to the librarians who organised the evening and the wine – and provided space for the diverse group that meets every first Thursday of the month at the library. And very well done to the organist who serenaded the well attended event and provided a back drop to the poetry.

This was Community Arts at it's very best. Long may it continue!

Royal Arsenal: a new Hub for the Arts

Plans have been approved to transform a section of the historic riverfront site in Woolwich. The Royal Borough of Greenwich's Cabinet approved the plans in March to transform a section of the historic Royal Arsenal riverfront site in Woolwich into a 16,500-square-metre creative hub.

Creating more than 400 local jobs

The creative hub will include large-scale concert venues, rehearsal and studio spaces, offices, restaurants, and a base for internationally acclaimed theatre companies. The site has long been identified as a key driver for the local economy, and it will provide a new foundation in the continued revival of Woolwich and the surrounding area.

It is anticipated that the new creative district will provide more than 400 local

jobs in addition to new roles during construction.

Boost to the local economy

Leader of the Royal Borough of Greenwich Cllr Denise Hyland said, "For almost 300 years, the Royal Arsenal was a major employer and the backbone of the local economy. These exciting plans place the site at the forefront of providing local jobs once more.

"Approximately one in six people in London work in the creative industries; this proposal will create new skills and wide ranging employment opportunities to open up these industries to residents and provide a massive boost to the local economy. This is an investment in the future of Woolwich and the future of the borough as a whole."

London by night

In her first solo exhibition, contemporary artist Lubna Speitan launches a striking series of original monochrome 'nightscapes' that capture the unique aura of London after dark showcasing her distinctive and instantly recognisable style.

Working predominantly in oils and acrylics Lubna paints landscapes and seascapes, portraits and abstracts.

Most distinctive, however, are her nightscapes of London, capturing the enigmatic uncanniness of nights in the city, nights lit by brittle halogen, icy headlights, reflected street signs, and the sheen of rainwater.

These scenes are full of secrets: this is a hidden London: the city of those who live on the streets, the friendless, the outsiders. The paintings reveal the loneliness that looms over London in the dead of night. Inspired by periods of insomnia, Lubna has calmly observed the interplay of darkness and illumination, and invites



viewers to share the mystery of these deep and fleeting spaces.

Born in London in 1983, Lubna Speitan has a BA in Graphic Design, University of East London. She has many diverse interests, and is active in social politics, environmentalism, and championing the rights of minorities and the dispossessed.

She says: "My intention is to feed the imagination of my viewers, to transport and communicate. With a little imagination we can travel great lengths together."

Lubna's work can be viewed 8th May - 8th June 2017, Mon-Sat from 9am -9pm at Greenwich West gallery Enter G-West Café, Lovibond Lane, Greenwich, London SE10 8JA in Greenwich West Community Centre, 141 Greenwich High Road) Contact: 07788 237 893 www.lubnaspeitan.com

You have been warned!

A reader writes: "I was scammed yesterday. I was repeatedly and persistently telephoned by a woman with an Indian accent who insisted that she was urgently contacting me on behalf of BT because a California-based operation was trying to access my computer.

"I repeatedly challenged her and she was able to produce plausible BT credentials and a call-back number, I gave her the benefit of the doubt and albeit cautiously followed her instructions to remove bugs on my computer.

"However at one stage this involved downloading a version of Norton called Teamviewer meant to help her remove the bugs and give extra protection but in fact gave her remote control. She then showed me a list of recent but blocked attempts to hack me. The whole process went on far too long with questions about Facebook and online purchases.

"It finally got round to my bank account and a genuine on-screen form from my bank (which she claimed not to be able to see) to set up an on-line account, something that I have never wanted. Having partially put in account details, but seeing that I

immediately had emails from my bank to say I had set up an on-line account and changed my email address, I aborted the process.

"I immediately telephoned my bank, was referred to the fraud section and disabled the on-line account. Efforts to report the incident to BT and on the on-line cyber fraud police website were less successful. I have myself traced and uninstalled the Teamviewer programme but must now call in a computer expert to check my computer.

"I obviously feel a real fool ..."

Ed: It could happen to anyone ...

World Heritage Day 2017



PHOTO: Emily Norton

Greenwich was one of thirty World Heritage sites in the UK to celebrate World Heritage Day, 2017 on April 18th. The Cutty Sark, the Queen's House, National Maritime Museum and Royal Observatory, as well as the Old Royal Naval College were all bathed in light for one night only – the first time in Maritime Greenwich's history that they have all been lit up. But why did so few people know about it?

Sing with "The Befrienders"

The Befrienders and Trinity Laban vocal students present a feel-good, musical celebration of Springtime on Tuesday 9th May at 1.05 pm in the Peacock Room, King Charles Court, Old Royal Naval College, SE10 9JF

Join The Befrienders and Trinity Laban vocal department students as they join together to present a fun, feel-good lunchtime concert to welcome the arrival of Spring.

Featuring original songs from the group, we are also celebrating fifty years of two iconic albums of the 1960s – *The Graduate* soundtrack

and The Beatles' *Sgt. Pepper's Lonely Hearts Club Band*. Come and be entertained, join in, sing along and leave with a spring in your step!

The Befrienders are a social singing group for older people run by Ageing Well Lewisham working with Trinity Laban. The group meet every Tuesday at the Grove Centre in Sydenham, 10am – 12pm and are one of four groups within Trinity Laban's "Inspired not Tired" programme of music and dance for people aged 60 and above. And it's free!

Mycenae House & Gardens

Great Nights Out!

May 2017

- 12 Jazz Nights
- 13 Baby Broadway
- 26 Global Fusion
- 27 Icarus Club

June

- 2 Adrian Legg

July

- 23 Summer Sunday Festival

November

- 17 Roger McGough & Little Machine

More information on our website

020 8858 1749

www.mycenaehouse.co.uk

Jazz Nights - Paul Higgs

GRANT SAW

SOLICITORS LLP

For You & Your Family:

- Divorce and Financial Settlements
- Children Disputes
- Residential Property- sales and purchases
- Transfer of Equity
- Leasehold Extensions and Enfranchisement
- Wills and Probate
- Lasting Powers of Attorney

For Your Business:

- Commercial Property
- Sites for Redevelopment
- Commercial Contracts
- Mergers and Acquisitions
- Dispute Resolution
- Court and Tribunal Proceedings
- Insolvency

Greenwich Office
Norman House
110-114 Norman Road
Greenwich, London
SE10 9EH

Blackheath Office
9 Hare & Billet Road
Blackheath
London
SE3 0RB

Tel: 020 8858 6971

E-mail: enquiries@grantsaw.co.uk

www.grantsaw.com



FEATURES

Developments on the peninsula

Neville Grant

Remember? Back in September 2015 the Royal Borough of Greenwich Planning Board gave the go-ahead to developers Knight Dragon on a landmark application that will create 20,000 new homes and 12,000 jobs on the Peninsula.

The development also includes provision for two new schools, a new North Greenwich transport hub, new community and health facilities and a new 40,000-square-metre film studio.

Knight Dragon have now released the first images of the new £1 billion landmark glass building set to tower over the Greenwich Peninsula by 2021. The structure will be made up of an 80ft 'winter garden' atrium topped with three triangular towers, and is designed by one of the world's leading architects – Spanish born, Santiago Calatrava.

To be called Peninsula Place, the building will include some 800 apartments, (200 as 'affordable'), a 500 room hotel, 300,000sq ft of offices and about 80 shops, as well as bars, restaurants, bars, a cinema and a performance venue.

There will also be a bridge linking the development to the Thames. This is Calatrava, known for his bridges: so of course, a bridge. Sadly, no bridge across the Thames (which of course would have to be high enough to allow cruise ships to access Enderby Wharf.)

Users of the 108 or 422 bus will be cheered to know that the current bus station will also be rebuilt, so it can handle 100 bus movements an hour.

The tube station is to be renamed Greenwich Peninsula and will still remain open over the three years of construction.

So what could possibly go wrong? Fortunately there are no lesser-spotted



frogs attracting protests. But the Twentieth Century Society (20CS) wants the Norman Foster bus station to be listed; that would clip Calatrava's wings, for a start.

However, it is unlikely that 20CS will get very far with their protest: the trouble is, as any traveller will attest, the bus station is not fit for purpose. Apart from anything else, it involves a vast waste of (very chilly) space.

Basically, many observers point out that the current infra-structure cannot keep pace with the development plans: the bus station is already used to capacity; the Jubilee Line is the only tube station in the area, and is also under extreme pressure.

Local commentator Darryl Chamberlain came up with this very interesting suggestion on his 853 blog:

"A fair chunk of North Greenwich's commuters are heading only one stop west, to Canary Wharf. So why not build a

pedestrian/cycle bridge over the Thames to the business district? One is already pencilled in for the west side of the Isle of Dogs – but one to the east would relieve the Jubilee Line, provide a bit of resilience, and bring the peninsula closer to its neighbour across the water."

Perhaps, given the developments of the cruise liner terminal at Enderby Wharf, a foot tunnel might be more appropriate.

The Mayor of London Sadiq Khan, should give us some encouragement:

"Peninsula Place will create a new buzzing, cultural destination in the capital, which I'm confident will attract visitors not only from London, but around the globe.

"This investment in key infrastructure in the capital is a vote of confidence post-Brexit, and shows that London is open to business, trade and attracting the greatest talent from around the world."

Who is Calatrava?

I first came across a Calatrava structure in Milwaukee, Wisconsin. The award-winning Quadracci Pavilion of the Milwaukee Art Museum has a movable, superstructure like a bird, with a "wing-span" of 217 feet, which can open up and close down as required.

Calatrava has his own flamboyant style: among his masterpieces are the Lyon-Exuperie Airport Railway Station, New York's World Trade Centre Transportation Hub; the Olympic Sports Complex in Athens and his Turning Torso Building in Malmo; and numerous beautiful bridges that seem, visually, to sing like harps.

Born in 1951, he was educated in Valencia, and at the Ecole des Beaux-Arts in Paris. La Escuela Tecnica Superior de Arquitectura de Valencia followed, after which he went on to postgraduate studies in civil engineering in Zurich.

Calatrava is a controversial figure among architects. Writing in the *Observer* Sun 5th February 2017, Rowan Moore, said:

"He has the trappings of polymathic genius. He was an engineer and a mathematician before he was an architect. He sculpts with a smooth abstraction a bit like Brancusi. He wants you to know that he paints every day: washes of doves, bulls and ecstatic nudes. Presentations of his projects come with drawings in a similar style, showing his working out of shapes and details.

"He also brings in his train a staggering number of alleged mishaps, projects late and over-budget, leaking roofs and falling masonry, broken limbs caused by slippery glass surfaces. His record was dismembered by an article in the *New York Times* . . . "

So even geniuses have their flaws: though his projects have a track record of massive overspending, and running over time-limits, there is no doubt that he will leave his mark in Greenwich.



Just one Tube stop from Canary Wharf, Greenwich Peninsula will be a thriving district outlined by 1.6 miles of waterfront. Here, 20,000 homes will combine with 48 acres of open green spaces, and a commercial district encompassing 3.5 million square feet of shops, hotels, schools and public facilities. The regeneration of the area is already well under way.

Is education happening?

Yes. Michael Oakeshott famously said that education was a conversation between generations. In recent times a considerable gap has opened up, because children see a different world with different emphases and fashions. This makes education very difficult.

Parents need to do everything they can to "talk the same language as their children".

Schools need to do everything they can to win the trust of pupils. Without these moves much teacher talk in classrooms is a waste of time.

The P E R Group's new website: www.perprospero.co.uk

BUILD &
CREATE
CONSTRUCTION LTD

BE INSPIRED AND BUILD

Extensions and refurbishments



buildandcreate.co.uk
clinton@buildandcreate.co.uk
0796 1089012 0208 305 2184

Proud members of
Checkatrade.com
Where reputation matters

NFB
National Federation of Builders



WHAT'S ON



ARTS

BLACKHEATH DECORATIVE & FINE ARTS SOCIETY, St Mary's Church Hall, Cresswell Park, Blackheath www.artsinblackheath.org

All meetings are on the 4th Thursday of each month-except August and December- 2pm for 2.30pm

Wednesday 25th May 2.30pm John Brooke:

Darwin and Design in Nature Non-members may pay on the door

GREENWICH DECORATIVE & FINE ARTS SOCIETY King William Court, University of Greenwich Mon. 8th May: Gypsies, Tramps & thieves - the Representation of the Worling Classes in Art Linda Smith Visitors may pay on the door

WEST GREENWICH LIBRARY, 146 Greenwich High Road, SE10 8NN Tel: 020 8858 428

FELT, STITCH, QUILT. A Textile Art Exhibition by Moira Searle, Diana McKinnon, Alison Kirkby at Capital Art Gallery, 13 Well Hall Parade, Eltham SE9 6SP. Sat. May 20 - 27th 10.00am-4pm.

GREENWICH WEST GALLERY

141 Greenwich High Road Tel. 07788 237 893

LONDON NIGHTSCAPES by local artist LUBNA SPEITAN 8th May - 8th June. Mon-Sat 9am to 9pm Entrance via: G-West Café, Lovibond Lane, Greenwich, SE10 8JA (rear entrance of Greenwich West Community and Art Centre, Website: www.lubnaspeitan.com)

BLACKHEATH HALLS

Until 28th May Exhibition of Susan Bennett's work "A SOURCE OF ILLUMINATION"

THE WESTCOMBE SOCIETY

May 12th. AGM 7.30pm in the Centenary Room Blackheath High School. Graham

Dear gives an update on Greenwich Park

Sat 10th June 7.30 Members' Evening

Sat in July Summer Picnic – TBC

Fri. 20th Sept. 10.00am - 2.00pm

Macmillan Coffee Morning

Sat 21st Oct. 2- 4.00pm Chrysanthemum Tea

Fri 3rd Nov. 7.30 for 8.00pm Autumn Quiz.

Sat, 15th November Christmas Bazaar at Blackheath High School for Girls

Scenes from Post-War London 1946 – 1960

The Early Paintings of Terry Scales



The Arrest.

9TH May – 10TH June 2017.

At

WEST GREENWICH LIBRARY

146 GREENWICH HIGH ROAD, SE10 8NN.

Tel 0208 858 4289.

Artist talk **9TH JUNE 3-4 PM**
<http://terryscales.blogspot.co.uk/>

THEATRE

THE GREENWICH THEATRE, Crooms Hill, London SE10 8ES Box Office: 8858 7755 greenwichtheatre.org.uk

COMMUNITY

DOCKLANDS HISTORY GROUP

13th May 9.45am CONFERENCE: Thames

River Crossings at Museum of London Docklands,

West India Docks £35.00

www.docklandshistorygroup.org.uk

BLACKHEATH & GREENWICH WOMEN'S

INSTITUTE Meets first Wednesday of every month,

doors open at 7.00pm for 7.30pm at Sunfields

Methodist Church on Old Dover Road

GREENWICH UNION PUB (MEANTIME)

READING GROUP New local reading group- start-

ing – first Wed. of each month. Read –Discuss–Share

food) at members homes. Contact: Barbara Ward

ward.barbara@mac.com 07960 107578 Free

BLACKHEATH BRIDGE CLUB duplicate sessions

in Mycenae House Mon & Thurs 7.15pm and on Wed

at 1.15pm. Tel Ron 0208 319 1312

CHARLTON HOUSE [www.charltonhouse](http://www.charltonhouse.org.uk)

0208 -856 -3001 Mulberry Tea Rooms

Jacobean Entrance Hall Mon-Fri 9am- 4pm

Lunchtime concert every Friday 1.00pm – 2.00pm

WOOLWICH & DISTRICT ANTIQUARIAN

SOCIETY Sat 13th May 2.00pm Vincent

Memorial lecture: The Abbey of St Thomas the

Martyr at Lesnes by Jim Marrett

BLACKHEATH HALLS TEA DANCE

17th May 1.30 pm with Mr Wonderful Dancing

BESPOKE PERSONAL TRAINING

SILVER SENIORS

BOOST YOUR ENERGY | SUPPLENESS | BALANCE

Home Visits | Outdoors
SPECIAL RATES Tues - Thurs Afternoons

Email: Daphne@Vanbrughfitness.co.uk
Msc Exercise & Health Behaviour

MUSIC

BLACKHEATH HALLS 23, Lee Road SE3 9RQ

0208 463 0100 www.trinitylaban.ac.uk

Tues. 2nd May & Mon 8th, 15th, 22nd & 29th May

10.00 am Music appreciation with Matthew

Taylor: Haydn: the Esterhazy years £95 course or

£11.00 per lecture

Wed 3rd May Jette Parker Young Artists Recital:

Jennifer Davis soprano & Angela Simkin mezzo-

soprano with David Gowland piano sing Schubert,

Mahler, Poulenc Gounod Delibes & Mozart £7 | £5

Wed 3rd May 7.30 pm Trinity Laban Junior

Fellowship concert: Stephen Upshaw & the Riot

Ensemble perform Jonathan Hervery's rarely per-

formed masterpiece **Jubilus** Free

Sat 6th May 2.00pm Opera taster Sessions:

Favourite Operatic excerpts. Free

Mon 8th May 1.10pm Lunchtime concert:

Music for Solo Double Bass & string ensemble by

Domenico Dragonetti and Franz Hoffmeister Free,

retiring collection

Thurs. 18th May 7.30pm AN EVENING OF

ENTERTAINMENT TO BENEFIT THORNTREE

PRIMARY SCHOOL in the GREAT HALL,

Featuring Glenn Tilbrook from Squeeze, Nine Below

Zero, The Lewisham & Greenwich NHS Choir,

Millions and Leon Tilbrook. Compered by Nick Wilty

MYCENAE HOUSE LIVE EVENTS: MAY

Thurs 11th May 4pm Bach To Baby. Classical Concert for families.

£10.

Fri 12th May 8pm - JazzNights. Candlit Live Jazz music event hosted

by Dave Silk featuring Paul Higgs plus JazzNights Allstars. £10.

Sat 13th May 11am - Baby Broadway. Concert of familiar showtunes

for all the family. £10.

Fri 26th May 7.30pm - Global Fusion Music & Arts. Monthly ceilidh

& acoustic night with guest John Sloman (ex Uriah Heep Singer). £6.

FEATURES

Meet your neighbour:

The *WN* meets STEPHEN WHITEFIELD

Kent may be the “Garden of England” - but the Garden of Westcombe Park must surely be Angerstein Lane, where the garden is tended lovingly by Stephen Whitefield. April was a good time to see it, with the daffodils & tulips competing with the forget-me-nots, and the peonies pushing through.

PHOTOS: Neville Grant



WN: So, Steve – Angerstein Lane – how did it get its name?

SW: It's now a leafy pathway going north from Shooters Hill, across Langton Way, and St John's Park. It led to Sir Julius Angerstein's mansion – Woodland House, now home to the Steiner School.

WN: And you live in Number 5?

SW: Right! It's not quite clear what if anything happened to numbers 1 – 4, but number 5 was an annex to the grand house on the corner – No. 2 St John's Park.

WN: So you have created a lovely garden on, what, a public thoroughfare? Who does it belong to?

SW: Well, the land belongs to adjacent properties, but as you say this is a public right of way. And it's where I spend many happy hours developing the garden, and it's amazing the number of passers-by you get to meet – people like you!

WN: Well, who wouldn't want to pass by? For what you have here, Steve, is a work of art, gardening art!

SW: Thank you. It's just a cottage garden, really. I should also mention the efforts of my neighbour in 8 Vanbrugh Terrace, who has done some wonderful planting and landscaping on his side of the lane, to complement the side I've been working on.

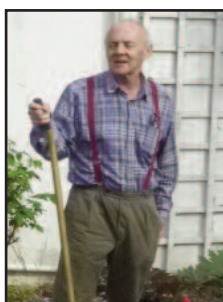
WN: Have you always lived here?

SW: No, I was born in Eltham, and I've lived around this area – mainly in Blackheath, all my life.

WN: So, a professional gardener, then?

SW: Not at all! I studied construction and

technology early on, and then moved on into property development. I only really started this garden about 12 years or so ago, as a hobby. I'm mainly self-taught. My parents were both keen gardeners, so I suppose something must have rubbed off, though of course I wasn't at all interested in gardening when I was young.



WN: But you must have green fingers!

SW: Well, I have had to develop them. And books and radio and TV programmes have been a big help too.

WN: Any tips?

SW: Not really: just crack on!

WN: I see you have a quince tree over there, and is that a fruit tree?

SW: A pear tree. There's another behind you, for cross-pollination purposes.

WN: So I guess you have a lot of people coming to admire your garden?

SW: Yeah – for example, one day Ella came passing by – she's a student of dance at Trinity Laban. She seems to have fallen in love with the garden, and she comes in quite often to lend a hand. But the time everyone should come is Sunday 18th June. That's when Greenwich and Bexley Community Hospice have their Open Garden Festival, raising funds for the hospice. Tickets are £3.00, and you can also buy tea and cakes. Or you can pay £10.00 and visit as many gardens as you like: a great day out. Last year my garden brought in £400.00

WN: Well done – and a very worthy cause. Great to meet you Steve; and see you on 18th June!



Nearby: this Victorian postbox still in use



We are sailing ...

In April, the Tall Ships again came to Royal Greenwich.



Following the success of the Tall Ships Festival in 2014, Greenwich hosted the start of the Rendez-Vous 2017 Tall Ships Regatta, which is organised by Sail Training International.

From 13th - 16th April, 30 Tall ships were moored in Woolwich and Greenwich. Members of the public had the opportunity to go aboard these ships; and could buy tickets from Sail Royal Greenwich for short trips on board some of the ships up and down the Thames – the best possible

way of seeing riverside Greenwich.

During the festival, there were shore-based events and concerts in Woolwich and Greenwich, along with have-a-go activities, historical re-enactments, and roving performers. Plenty for all to enjoy.

On the first leg of the regatta, the ships sail from Greenwich to Sines, in Portugal, and from thence to Bermuda and Boston, before arriving in the St Lawrence seaway at Quebec, to mark the 150th anniversary of the Canadian Federation.



On board for the first leg: fifty young volunteers from Greenwich. Among them Capres Turner, studying anthropology and Sociology at Goldsmiths, and Samuel Weston, who is studying photography at Ravensbourne College.



This rather sinister looking vessel is the *Nao Victoria*, a Spanish Carrak, launched in 1992 (no, not 1592!). Among the other vessels were Barques, Barquentines, Brigs, Brigantines, Ketches, Cutters, Yaws, and various types of Schooner; from Netherlands, Malta, Spain, France, Norway Germany and the UK.

Photos: Top: courtesy of the National Maritime Museum. The others: Neville Grant



Above: the Dutch brig *Morgenster*.

Right: In contrast, the sleek lines of a passing Thames Clipper.





Bluebell alert

The Woodland Trust has told the *WN* that visiting a Bluebell Wood is one of the UK’s great seasonal highlights and the Trust has lots for you to visit for free across the South and East this spring.

It lists some of the best spots for enjoying bluebells – the nearest places to us are in Kent – Ashenbank Wood, Cobham, and Hucking Estate, Maidstone. Oh, and there’s also the Westcombe Woodlands! (as in the photograph).

Half of the world’s population of bluebells are here in the UK. They can usually be found between mid-April and late May, when the flowers can make the most of light reaching the forest floor before the full woodland canopy casts its shade. They can provide a valuable, early source of nectar for bees, butterflies, hoverflies and other insects. Occasionally you will spot white bluebells in amongst the violet – this is caused by a genetic mutation.



PHOTO: Frank Smith

Bluebells are an ancient woodland indicator – meaning that they commonly appear in areas that have been wooded since 1600AD, and rely upon the unique conditions this habitat can provide.

If you visit a bluebell site, visitors should be careful where they tread, and stick to paths: but trampling is not the only threat that bluebells face. Since 1998 it has been illegal for anyone to collect or pick native bluebells from the wild for sale.

Go With the Flow
Jim Wintour

PHOTO: courtesy Port of London Authority



The Viking Star in Greenwich. Launched in 2015, it carries up to 930 passengers.

While a grey cloud hangs over much of the economy, one ray of sunshine is the global cruise line industry. The industry has been growing by a sprightly 6% a year, outstripping most other sectors.

Barcelona was visited by over two million cruise line passengers last year. Even a small town like Akureyri in Iceland, far smaller and far colder than London, had 90,000 cruise line passengers.

Yet London is missing out, with only a meagre 20,000 cruise line passengers docking in central London last year.

The reason why London is missing a trick is simple. According to one cruise operator, London is the only major European port “which fails to live up to its status in terms of arrival infrastructure”. In other words, London lacks a proper cruise liner terminal.

There are some decayed facilities in Tilbury, but otherwise cruise liners are forced to go to Dover or Southampton.

In the 2009 Assessment of Cruise Ship Requirements in London, Enderby Wharf was recommended as the site for a cruise terminal, and planning permission has now been granted. Enderby Wharf will take mid-size cruise ships up to 230 metres long, and handle about 50-60 visits a year.

Much has been written about the way the terminal will exacerbate Greenwich’s chronic air pollution problems (*WN* Feb. 2017). It is claimed that the vessel is fitted with energy-efficient hybrid engines, and

onboard solar panels and exhaust pollution-minimising equipment to enable her to meet strict environmental regulations. Her propeller shaft bearings are lubricated by seawater, which is recycled into the ocean. The seawater lubricant replaces expensive biodegradable oils, which would need to be stored and disposed of, and would also create a risk of accidental oil discharge.

The terminal will bring real benefits to the people of Greenwich. The majestic sight of great cruise liners coming up the Thames will add excitement and pzazz to Greenwich and will bring more customers to local shops, restaurants and businesses.

As Cllr Danny Thorpe of Greenwich Council points out, the terminal will add a new dimension to Greenwich’s tourist industry, presently worth some £1.1 billion a year to the local economy. It will bring new jobs on top of the existing 16,000 jobs in tourism in Greenwich, and people will be trained in the proposed new skills centre at Enderby Wharf.

However, the proposed new cruise line terminal at Enderby Wharf is just a small step to improving London’s facilities and will only handle about 50,000 passengers a year. If Greenwich and London are going to reap the benefits of tourism and jobs on the transformational scale of Barcelona, then an additional and massively larger cruise liner terminal is needed, perhaps shore-powered and located in Woolwich. *Jim Wintour lives near Enderby Wharf*

The BJWP
Mike Norton

The Blackheath Joint Working Party (BJWP) had its annual public meeting at the end of March. This provided an opportunity to discuss various aspects of the heath’s upkeep and use.

It also allowed the general public to learn about progress on the various projects that have been funded by money from the OnBlackeath concerts, which so far, have provided an annual sum of £15,000.

For the 2016/2017 period, funds went to the Hare & Billet Action Group, Story Boards (part funding), a grassland and ecological survey of the whole heath and bird-proof litter bins.

For the 2017/2018 period, funds have been agreed for: additional bunds; “Do not feed the wild fowl” signage for the Prince of Wales Pond; Nature Walk leaflets; further funding to complete the Story Board project; and funds to cover maintenance of the Hare & Billet Pond. We are hoping for similar funding next year, so please start thinking now about any projects you think would benefit the heath.

The amenity societies, including the Westcombe Society, have been concerned about the potential overuse of the heath for events, which risks turning the heath in the

spring/summer period into a permanent event site. Events on Blackheath are now being reviewed by the BJWP at a single special meeting in October each year. We remain, however, an advisory body.

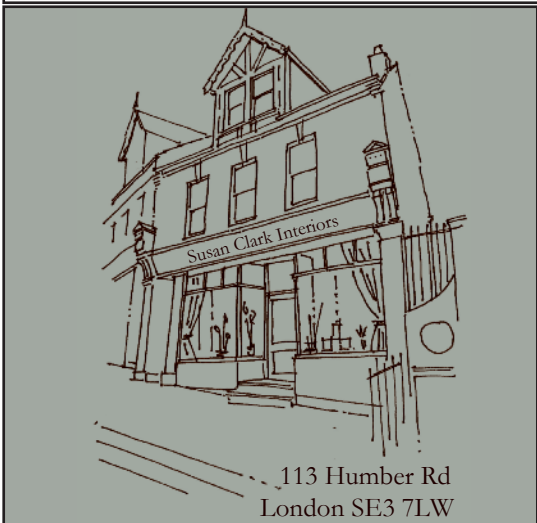
We look forward to the publication of the new Blackheath Events Policy, which is intended to cover both the Greenwich and Lewisham sides of the heath. A draft was produced last year by the amenity societies and this has since then been going between the two councils and is expected to appear in the very near future.

In 2017, from May onwards we can expect the return of “In The Night Garden Live” on the Circus Field from mid-May to mid-June. Race for Life at the beginning of July is followed immediately by the Foodies Festival.

Late August into Early September sees a funfair on Circus Field overlapping by a day with the arrival of OnBlackeath, with 9th/10th September being performance days.

In the second half of October, a funfair on the Lewisham side of the A2 will continue through the weekend of the annual fireworks (4th November). Finally, the Christmas Lights switch-on/ Blackheath Village event is on 2nd December.

Susan Clark Interiors



113 Humber Rd
London SE3 7LW

Construction to complete renovation
Project Management • Interior Design
Upholstery • Joinery • Lighting
Curtains • Blinds • Paint
Antique Furniture • Gifts • Cards
sales@susanclarkinteriors.com
www.susanclarkinteriors.com
0208 305 2299

SPECTRUM

Painters & Decorators
Interior/Exterior
No job too Small
Clean and Reliable

Free Estimates
30 Years Experience

020 8853 2759 or
0795 0815412

A & A LANDSCAPES
Landscape Specialists



Free advice &
estimates



Qualified
horticulturalist

All aspects of soft & hard landscaping
work carried out including
* Maintenance *Site clearance
* Turfing * Tree surgery
* Fencing * Patios
* Brickwork
Tel. 020 8318 2530



- Family Law
- Litigation and Employment Law
- Residential / Commercial Conveyancing
- Lease Extensions
- Planning Law
- Collective Freehold Purchases
- Wills / Administration of Estates
- Lasting Powers of Attorney

www.beverleymorris.co.uk

020 8852 4433 enquiries@beverleymorris.co.uk

35 Montpelier Vale, Blackheath Village, London SE3 0TJ

Ground floor offices. Adjacent to Montpelier's delicatessen

62 Lewisham High Street, London SE13 5JH

Close to Lewisham DLR and train stations

MARKET PLACE

Please send ads for the Market Place with payment by the 10th day of the preceding month to:
Marilyn Little, 163, Westcombe Hill, SE3 7DP
8853 1312 Advertising@westcombesociety.org
ALL classified adverts 30p per word. Please make cheques payable to The Westcombe Society

ACCOMMODATION

GOOD RELIABLE HOST FAMILIES wanted for foreign students. For more info. please contact Lynne on 01732 822649 or email sesgreenwich@aol.com

ROOMS FOR HIRE

FUNCTION ROOM FOR HIRE
Blackheath area, up to 150 people, Bar, disabled access. Tel 07940 296290

GARDENING

GARDEN MAINTENANCE: mowing, weeding, pruning, communal garden contracts, fruit and vegetables, gardening tuition, RHS qualified, also domestic cleaning. Call John and Rachel on 07746 121510

HOLIDAYS

WHITSTABLE WEEKENDS / WEEKS Sea wall house between Oyster Warehouse and Harbour. Sleeps 5. Fantastic views. 8858 6578 or 013 04 367443

PERSONAL CARE & THERAPY

BLACKHEATH HOLISTIC HEALTH SERVICE. Counselling, Psychotherapy, Yoga Westcombe Park <http://www.bhhs.selondon.co.uk> Tel: 020 8858 1991
COUNSELLING FOR CREATIVE PROFESSIONALS. Speak to Jon Edge, MA, MSc, UKCP, BACP Registered. 0788 777 8360

SERVICES & TRADE

ELECTRICIAN / ALARM ENGINEER
No job too small TMIET registered. Call 0787 9011792
C.S. CARPENTRY-JOINERY
Decorating and all building work undertaken. Joseph McNamara 8857 5480, mob. 07947155366
LOCAL CARPET/OVEN CLEANER Specialist in cleaning Carpets & Ovens, Upholstery & rugs. Competitive rates. Email: adam@carpetcrew.co.uk M: 07828503132 <http://www.carpetcrew.co.uk>
WESTCOMBE CLEANERS I'm a friendly, hard-working & organised domestic cleaner. Regular or single services. Competitive rates. Additional tasks. I love my clients to be happy. Phone 07746 291617
DRESSMAKER Specialist in Special occasion wear, Bespoke wedding dresses and alterations with over 25 years experience. Bookings in advance on 07904880448
PEST CONTROL SERVICES All types of pests dealt with including fox control. Call John 0208 300 3496

SITUATION VACANT

HAIRCOMBE
are looking for an experienced hairdresser. Can cut men and women's hair and is confident with clipper cuts. 07784863887/0208 293 0224

FOR SALE

WINE: Regret must sell my well-kept collection of Laithwaite's red wines. Average r.r.p. was £8.70 per bottle, but will give generous discount. For list phone Lois on 8858 0417.

ELECTION 2017

Don't forget the hustings meeting in Mycenae House on May 31st.
See details on page 5.

HOMEWORKS

All-round handyman for those DIY's you have no time for! General repairs. Painting & Decorating. General Carpentry and flooring. Flat-pack assembly. Patio and deck cleaning. No job too small. Contact Matthew Barron 07903 388658.
MARK CHEESEMAN, LOCAL CARPENTER AND JOINER with 30 years experience. All aspects of carpentry and construction carried out considerably and to a high standard. Reinstatement of original Victorian/Edwardian/Georgian details, ie shutters, skirtings, plinth blocks, picture rails, cornices etc. Bespoke joinery, wardrobes, cupboards, stairs, kitchens. Sash windows overhauls. Resin timber repairs. Please call M: 07767 456131 or H: 020 8854 4028
S.S.D PLUMBING AND HEATING Friendly local plumber available for free estimates and advice. All works undertaken, no job too small, from boilers to bathroom suites, all works viewed within 24 hours, fully insured and new work guaranteed. Call today on 07931 536533 or 8305 1039 ssdbuilders2@hotmail.com
UPHOLSTERER SPECIALISING IN TRADITIONAL UPHOLSTERY www.suemayesupholstery.net or phone 07932 040298
S.S.D DAMP PROOFING SPECIALISTS in the treatment of RISING & PENETRATING damp. Repair/renewal of rotten structural timbers as a result of damp. Chemical injection and render using tried and tested systems. Specialists in providing horizontal and vertical barriers against damp/ water ingress. Please contact us for a free consultation and written estimate. Mob: 07931 536 533 Land: 020 8305 1039
PUBBLE PLASTERING Need a plasterer with excellent references? Work is of high standard. Qualified C&G. Plastering-Rendering-Plasterboarding - Repairs. Free quotes! Call Alex on 07547 468459 / 0203 092 0684 pubbleplastering@googlemail.com
MALCOLM TIERNEY, CARPENTER Specialist in refurbishment, repair and replacement of sash windows. 0777 5657371
TYPEWRITER ENGINEER selling portables/repairs Dinsdale Road Tel. 0208 488 2713 / 07376325107
DECORATING, ELECTRICS Plumbing and Property Maintenance. Est. 25 years. References available. Phil McNamara 8857 5480, mobile 07814 360862
TRAINED CHIMNEY SWEEP & STOVE INSTALLER Fast, friendly Happy to work! Call Anthony on 07772 649577 or email: chimneymaintenance@gmail.com
ANDREW FLETCHER Painting, Decorating & Tiling services. Over 20 years' experience, fully insured. References available. Call 07702 094382



JAMES REMOVALS
"excellence through effort"
.com

- Fully trained uniformed staff
- Full insurance included in ALL quotes
- Prompt free estimates
- On-site containerised storage
- Discounts for long-term storage
- Well-established family business
- Pianos - our forte



Call **0800 0157775** for a free survey or visit jamesremovals.com to request a quotation online

JEWELLERY AND WATCH REPAIRS AND VALUATIONS from Michele Franklin. British Jewellers Association accreditation 07809 502 714 Michele@personaljewellerylondon.co.uk
S.S.D BUILDERS LTD.
Long established Building & Roofing Company available for free estimates & advice. ALL works undertaken, from guttering to Refurbishments. All works viewed within 24 hours, fully insured & new work is guaranteed. Call us today on 07931 536533 or 0208 305 1039 ssdbuilders2@hotmail.com
PHONE/BROADBAND SOCKETS. Improved Broadband speed plates, Fault Finding Repairs, New Extensions, Tidying of cables. 25 yrs BT, Insured. 07845 705900
SUNSHINE WINDOW CLEANING For a no-obligation quote call Martin on 07821403577
AIR CONDITIONING & ELECTRICAL WORK Fully qualified engineers CSCS Tel: 07419 312547
DECORATING, ELECTRICS Plumbing and Property Maintenance. Est. 25 years. References available. Phil McNamara 8857 5480, mobile 07814 360862
A MAN AND A VAN Tel: 020 8858 3889 Mobile: 07885 917842
T.TA ELECTRICS. NICEIC Approved Contractor, Quality Tradesman. All electrical work undertaken, Fully Insured & Guaranteed. 24HR EMERGENCY ELECTRICAL. Please call Tony on 07961 509 403 OR 020 84887425 OR info@ttaelectrics.co.uk
INTERIOR DECORATOR & CARPENTER with over 20 years experience. A member of the guild of mastercraftsman. Free quotes & friendly advice on all your decorating requirements. Local references available. Tel. Ashley Greaves 8858 2981

TUITION

ITALIAN TUITION Native Italian teacher offers lessons at all levels.Preparation for GCSE, A-LEVELS courses, Grammar, Conversation Tel 07788 743371
MATHS & ENGLISH TUITION and preparation for 11+ and independent school selection tests by qualified and experienced teacher.mary.stuition.com Mary Bauckham 07709089838 mary.bauckham@virgin.net
ENGLISH/PRIMARY/11-PLUS TUITION All ages welcome. GCSE, A/S-Levels, Common Entrance, Primary, etc. Fully qualified, experienced teacher. Call Hellin Halliday BA(Hons), PGCE on 020 8858 7704 / 07928 017762 to discuss how I can help.
SHOW YOUR COMPUTER WHO IS THE BOSS
Are you looking for some extra help working with your computer? Need some help with your digital photos, online shopping and the jargon? To discuss the options, call Paul on 07958 251448 or email paul.clayton@soulchip.co.uk
MATHEMATICS, PHYSICS AND PSYCHOLOGY TUITION Ex Head of Department with 20 years experience providing support through CE, GCSE, IB, GCE/STEP and degree studies. All boards and levels. SEND and G&T specialist. Full access to all academic resources. T: 07497 828247 E: blackheathmaths@gmail.com
Website: blackheathmaths.com
SPANISH TUITION all ages and levels, GCSE, A levels, conversation, literature, by Latinoamerican native speaker. Please contact Miguel at migansiergut52@gmail.com or 07910318513
MATHS TUITION
Qualified and experienced secondary teacher offers tuition to GCSE level.Call Miv Whitaker: 07745816338; or email miv.whitaker@fsmail.net
RUSSIAN TUITION. Russian-speaking university lecturer offers lessons at all levels (including university, business and conversation) in your home/office. Tel.: 07766 531401
NEED HELP WITH YOUR COMPUTER?
Local technician provides home technical support & tuition. No job too small, all in your own home. Ring Glenn: 8473 4091
MULVIHILL ACADEMY OF IRISH DANCE
Adult and Child Irish Dance Classes available in the Blackheath area. Come along for a fun-all-in-one workout. For more information call Rachel on 07707 100521

BUY LOCAL!

Discounts available on production of your Westcombe Society membership card.

BLACKHEATH VILLAGE: PARES FOOTWEAR
10% OFF all shoes over £20, excluding sale stock
RAFFLES DESIGNER WEAR.
10% OFF all non-sale goods

THE VERB SHOP 10 percent discount on all copywriting and content creation. Free 1 hour assessment of your marketing material.

GREENWICH: NORTH POLE RESTAURANT
12.5% OFF Meals only for two
3D DIVING 10% discount on all scuba diving courses. Offer excludes scuba diving equipment.
GREENWICH COMMUNICATION CENTRE
at 164 Trafalgar Road: 10% Discount on all Computer Maintenance & Repairs (inc Tablets & Smartphones) www.greenwichccc.com T: 02082692103

HUMBER ROAD: BODYWORKZ - THE FITNESS CLINIC
109 Humber Road.10% OFF all treatments costing £30 or more except Chiropody; exc.Saturdays.
ROYAL NEPALESE RESTAURANT (Station Crescent) 20% OFF meals for two or more Sunday - Thursday.
THE CURIOUS COMB
10% discount on services over £30 Weekdays 8am-10am, 2pm-4pm (excludes retail purchases).
CORIANDE RESTAURANT (Station Crescent) 25% off Sunday to Thursday. Bookings only!

THE STANDARD: COTON & HAMBLIN - OPTICIANS
£65 off complete spectacles
KARAN CHEMIST 10% OFF Weds. only
BLACKHEATH EYECARE OPTICIANS
20% off 2nd pair of spectacles. (Same prescription). Not in conjunction with any other offer. (Complete glasses start from £49.95 with single vision lenses). 5% off contact lens solution and accessories. <https://www.blackheatheyecare.co.uk/>
TROJAN PRESS 10% OFF all quotations

WESTCOMBE HILL A * DRIVING SCHOOL £5 discount on the price of one x 2 hour lesson for WS members.
THE WONDER WOMEN NETWORK 10% discount

WESTCOMBE PARK ROAD KAREN STOREY OF HOMESPACE offers members 10% discount on decluttering & homestaging services 0844 846 5854 www.home-space.biz

PENINSULA SHENDA FALVEY PERSONAL TRAINING & BOOTCAMPs Free bootcamp session at Greenwich Peninsula worth £10. Book to secure place (excludes existing customers) 25% off first personal training session plus free consultation M: 07887 727 335 www.shendafalveypersonaltraining.com

HAVE YOU GOT THE SKILLS – OR TIME – FOR DIY?

Or is it all just such an effort!
If that's your problem, I can solve it !

- * Decorating including preparation, wall- papering, painting, & special finishes.
- * Re- hanging doors and putting up shelving.
- * Re-laying floors-lino, wood laminates and ceramics.
- * Domestic Electrical work.
- * Plumbing - taps, showers,radiators and external.
- * Garden revival and maintenance

Need help with any of these?

Please call
Tony: 0208 856 9398 M: 07961 540836
<http://www.tonysdiy.com/>

J K Auto Services

All makes of vehicles serviced

Saab Specialist

Tyres & Exhaust Fitting Service

Air Conditioning Re-gas & Servicing Facilities

Unit 52, New Lydenburg

Industrial Estate,

New Lydenburg Street,

Charlton SE7 8NF

Tel: 020 8293 1511

Childcare for ages 3 months – 5 years

I can see a great nursery from here



If you're looking for a nursery that will help your child to grow and develop – choose Zoom Nurseries.

At Zoom every child enjoys an individual Learning Journey. A record that tracks their daily progress through our fantastic fun-filled learning environment.

It's just one of the tools we use to keep our parents up-to-date with their child's achievements, as well as their personal, social and emotional development. It's an important tool, one that helps us ensure that when they leave Zoom to start school, they leave as independent learners and thinkers, ready for the challenges ahead.

With five nurseries in **Eltham, Hither Green, Blackheath** and **Brockley** that between them have four Ofsted 'Outstanding' judgements, and places available, you don't have to go far to give your child a great start.

To find out more and arrange an informal visit please call **Ann Briley, Assistant Childcare Director** on **07816 413718** or email ainnbriley.zoom@gmail.com



Or visit our website for more details www.zoomnurseries.com

PLANNING APPLICATIONS

(See <http://www.westcombesociety.org>)

56 RUTHIN ROAD ref 17/1092/F
Loft conversion with 2 rear dormer windows and 2 front roof lights

4 KIRKSIDE ROAD ref 17/0929/F
Loft conversion with 2 rear dormer windows and 3 front roof lights

71 FOYLE ROAD ref 17/1048/F
Demolish existing extension and construct part 1/part 2-storey rear extension

83 MAZE HILL ref 17/0819/F
Demolish existing conservatory and construct single storey rear extension, relocate main entrance, clad external walls, install new windows and construct basement flat

Planning applications can be viewed in the library, or at the Woolwich Library on the lower ground floor of the Woolwich Centre, 35 Wellington St.

They may also be viewed on www.greenwich.gov.uk/planning

THE POINTER SCHOOL



An independent co-educational school for pupils aged 3 to 11 years



"We believe that, with love, guidance, encouragement, discipline and hard work, every child can do so much more than he or she may consider possible."

Mr RJS Higgins Headmaster

Nursery - Year 1
37 Shooters Hill Road SE3 7HS
Tel: 020 8858 7977
earlyyears@pointers-school.co.uk

Year 2 - 6
19 Stratheden Road SE3 7TH
Tel: 020 8293 1331
secretary@pointers-school.co.uk

www.pointers-school.co.uk

LEARNING FOR LIFE