



Westcombe NEWS

Free to 3800 homes, and in libraries & some shops

September 2014 Issue 7



A community newspaper commended by the London Forum of Amenity and Civic Societies

Monthly newspaper of The Westcombe Society: fostering a sense of community

Over the hill . . .

Following years of work by volunteer enthusiasts, Severndroog Castle opened to the public in July.

"London's Greatest Folly" is a unique 18th Century Grade II listed tower set in beautiful Oxleas Woods. Climb the 86 steps of its spiral staircase, and you get an amazing view of London – and, on a fine day, seven counties.

The building was closed to the public in 1988, and became almost derelict. But thanks to the Severndroog Building Preservation Trust, which was set up by local people in 2003, it has been lovingly restored, with the help of a grant from the Heritage Lottery Fund. The contractors were Hilton Abbey (which is situated at the foot of Westcombe Hill).

The castle was originally built in 1784 in memory of Commodore Sir William James by his widow. In April 1755, he



attacked and destroyed the island fortress of Suvarnadurg (rendered in English as: 'Severndroog') of the Maratha Empire on the west coast of India, between Goa and Mumbai. Sir William died in 1783.

It was eventually bought by London County Council, (later the GLC), but when the latter was abolished in 1986, it fell into the hands of Greenwich Council, who could not afford to maintain it.

The castle is open every Thursday, Friday and Sunday, entrance adults £2.50 (£2.00 children and concessions) The tea room is open every day except Monday from 9.00 am to 5.00 pm.

Fire alert



PHOTO: Marilyn Little

This was the scene early one Thursday evening in July when a fire broke out at the top of Westcombe Hill. It was not well timed . . . The fire brigade along with other public sector workers were on strike, and as a result, there was a small delay before a contingency fire crew arrived. In the interim, the police arrived, and took immediate action: they broke down a door to ensure no one in the flat above was in danger. One officer suffered burns to her hands.

Local shopkeepers also turned out with their fire extinguishers to help control the fire. By great good fortune, the only damage to the hairdressers, GoWest, was caused by water to the ceiling, and they were back in business next day. However, the flat above was badly damaged. It is thought that the cause may have been an electrical fault in a nearby shop sign.

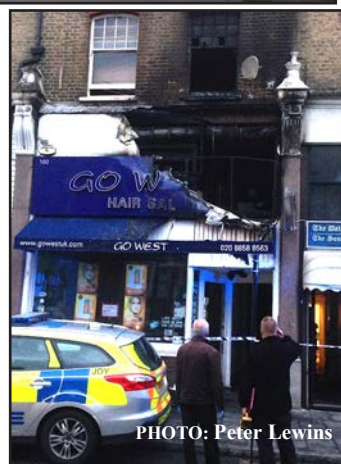


PHOTO: Peter Lewins

but under threat . . .

Enderby's Wharf is the site of the long-awaited cruise liner terminal. Nearby is also the site for a huge development of flats and houses being put up by Barratt.

Here also is Enderby House – a Grade II listed building now sadly deteriorating. It was here that global communications began – and it is now under threat.

Built in the 1830s, the house belonged to the firm of Samuel Enderby, the largest whalers and sealers in Britain, and pioneers of Antarctic exploration. There is a description of their flagship and crew in Hermann Melville's *Moby Dick*.

"Between the 1850s and 1970s, Enderby's Wharf was where most of the world's submarine cables that connect the world's telegraph telephone and now internet networks were made," said local historian Dr Mary Mills.



PHOTO: Alan Burkitt-Gray

The site developers appear to have little interest in preserving the historic building and equipment. Barratt Development plc is already demolishing the existing property on the site – also part of Alcatel-Lucent's historic cable factory. More than 160 years after the first cables were made there, a factory behind Enderby's Wharf still makes vital equipment for undersea cables to connect the world's internet services.

A local group has recently been formed to work with Greenwich Council and the site developer towards the preservation of Enderby House and the wharf.

For more information, and contact details visit: <http://enderbywharf.wordpress.com/>

Pyjama party

Fancy a moonlit walk in your jim-jams with a jolly bunch of female nurses? Sorry, fellows, you aren't invited. Yes, it's for women only.

A group of nurses from Greenwich & Bexley Community Hospice have signed up for this September's Moonlit Walk to raise funds for a Specialist Nurse for a whole year for the Hospice. The Hospice wants to see local ladies joining in, too.

"We've got so much going on," says Community Fundraiser, Megan Boyle. "We've got jokes from our special guest comedienne Jo Brand at the start, live music from the Rock Choir, flashing bunny ears, pit stops and cup cakes . . . It's going to be great fun."

Entrants under 16 must be accompanied by a registered adult. Registration costs £15 in advance or £25 on the night per person; it includes a sash and a medal for every walker

To join the walk you can register online www.communityhospice.org.uk, by email info@gbch.org.uk or call 020 8319 9230.

OnBlackheath

OnBlackheath is on September 13th - 15th, and some 15,000 people are expected each day on Dartmouth Field (the western part of Blackheath). It starts with *Massive Attack* on 13th. – *Sleeping Souls* are on the Sunday . . .

Apart from the music, there's also a whole host of fun and games for kids (and adults) of all ages: hoola hooping with the Majorettes; musical clowns; you can even re-mix *Massive Attack* tracks, learn beat-boxing and do graffiti t-shirt design.

Expect some traffic disruption: the 380 bus may be rerouted, and Hare & Billet Road will be closed two days before, and one day after, the event. The *WV* gathers that build-up for the event will start on 8th Sept. and 'load-out' will be from 15th-18th Sept. On all these days work finishes by 8.00pm. During the event, the complaints/information hotline is 0794 3824 229

Discounted tickets for locals are available from The Blackheath Conservatoire or the Greenwich Mercure Hotel – for the Sunday. You need to take ID with you.

< < News briefs > >

Bicycle thieves

There is another opportunity to get your bike marked and registered on 20th Sept 11.00 am - 3.00 pm opposite the Vanbrugh Gate (near the Gibb Memorial).

Keep a record of the frame number etc of your bike and register it on these websites:

- ◆ www.bikeregister.com
- ◆ www.immobilise.com

Foyled again?

Heathside – the garage area behind Foyle Road, and the adjoining lane and land, has been sold for the princely sum of £1.55m. Readers of the *WV* will recall that previous applications were strongly (and successfully) opposed by local residents on numerous grounds. It is not yet clear what plans are envisaged, though it is likely that a new planning application is in the offing. Watch that space . . .

Caring for carers

People looking after an adult with a long-term disability, illness or age-related frailty, are being encouraged to obtain a carer's assessment. This looks at how caring impacts on their lives, and describes what support is available. Phone 0208921 2304 to arrange an assessment.

Couple sentenced

A couple has been sentenced at Woolwich Crown Court after they stole money from an 88-year-old dementia sufferer in Westcombe Park in June last year.

Michael Nicholls, 38, of Fairlawn, Charlton was sentenced to four years and eight months for theft and for being unlawfully at large from prison. Francesca Bunyan, 42, of Abbey Wood, was given a two-year suspended sentence.

The 88 year old pensioner had become too unwell to appear in court, and his evidence was given on tape.

Chess success

Congratulations to the Pointer School chess team, Ciaran, Aryan, Rhys and Ilia who won at The Independent School's Association Chess Tournament at the London Christian School in June, beating 6 other schools.

All change at St John's

We are sorry to say goodbye to Rev Peter Farley-Moore, who is to move from St John's here to another St John's – in Deptford.

Jan Barnett writes:

Very sad to hear Christine who worked for Hattie at Passion Flower has left to find out what she really wants to do. She told me she has loved working in the shop as it serves such an interesting and delightful community.

The Westcombe Society

Macmillan Biggest Coffee Morning

is on Friday 26th September

10.00am to 2.00pm, Main Hall Mycenae House, Mycenae Road.

Please come and support this event and help raise funds for Macmillan. If you are interested in helping on the day, or by making cakes and sandwiches for sale at the Coffee Morning, please contact Caroline on 020 8853 0948

Children's Nearly New Sale

is on Saturday 27th Sept. 2.00 - 4.00 pm in Mycenae House.

Bargains galore in children's and babies' toys, clothes and equipment.

Entry 30p (50p for non-members of the Westcombe Society)

Children enter free. If you are interested in having a table or rail to sell your nearly new items, please contact Joanne on 07709 571777

The Dickensian Christmas Bazaar

is on November 22nd. If you would like stall space, ring Marilyn on 8853 1312

COMMUNITY NEWS

WESTCOMBE NEWS

ALL EDITORIAL CORRESPONDENCE TO:

Neville Grant, The Editor
wnews@westcombesociety.org
Tel. 020 8858 8489

ALL MATERIAL TO BE SENT TO: wnews@westcombesociety.org

Deadline for the October issue:
16th September

News Editor:

Environment Editor: Maggie
Gravelle

Reporters: The community - that means
you!

ENVIRONMENT COMMITTEE

Emily Norton All queries and
comments to: 020 8853 2756
environment@westcombesociety.org

DISTRIBUTION

Myles Dove & Barbara Henley
Jean-Jacques and Maureen Aune
Volunteer distributors please phone
020 8853 3740, we need your help!

ADVERTISING MANAGER

Marilyn Little, 163 Westcombe
Hill, SE3 7DP 020 8853 1312
(marilyn.little@btinternet.com)

All adverts payable in advance by
cheque to **The Westcombe Society.**

Costs:

DISPLAY: Single column 6cm x 6cm:
One - four issues £35, five-plus issues £30
each. Other sizes: please inquire.

Classified Ads (Market Place) 30p per word
(A telephone number = one word. An email/
web address = 3 words.) Deadline for all
adverts is 10th day of the preceding month

Printed by: Trojan Press

Contact the Westcombe Society:
WestcombeNews@egroups.com
Publisher: The Westcombe Society
Chairman: Marilyn Little
Tel. 020 8853 1312

The views expressed in the Westcombe News
are not necessarily those of the Westcombe
Society or of the Editor.

We take all reasonable precautions to protect
the interests of our readers by ensuring as far
as possible the bona fides of our advertisers
but cannot accept any responsibility for them.
Any complaints should be addressed to the
advertiser.

To access back-numbers (in colour) go to:
www.westcombesociety.org/westcombe-news/
Westcombe Society's Blog:
<http://westcombe.blogspot.com>

Westcombe society membership

please send this membership form to:
peter Lewins, 221 Westcombe hill,
se 3 7Dr

Name.....

Address.....

tel.....

e mail:

Please enclose payment as appropriate:

Family membership	£12		
individual membership	£8		
senior citizens/unwaged	£4		

The Family Summer Picnic



LEFT: Relaxing on the grass was the name of the game – if you weren't selling cakes like, well, hot cakes (ABOVE)

The sun shone on the Westcombe Society's summer picnic, and great fun was had by all. . . These pictures show what it was all about: relaxing on the grass, the children having fun, with games, and a tug of war and yummy food as well as charity stalls, a drop of Pimms and a cake or two – and Dave Silk's trio.

Chairman of the Westcombe Society Marilyn Little commented: "Well, what a lovely day. We were so lucky with the weather which couldn't have been better.

"Everyone worked tremendously hard to make the event a success and I know it was really appreciated by those attending. I spoke to a number of families who were really having a good time, some of whom had not visited the gardens before.

"We hold this event for the enjoyment

of the community and raising money is not the aim but . . . we took over well over £400 in takings which should cover our outgoings. A fantastic effort.

"Very well done everyone and thank you all very much for all your efforts. Not forgetting Ben from Mycenae House.

"We really do enjoy putting on our events and we know they are well received but we could do with a little more help – particularly setting up and taking down. We transport much of our equipment from a garage in Siebert Road and help is always welcome.

"If you came along to the picnic and enjoyed your day please think about helping out for an hour or so. It is enjoyable and the more of us there are the quicker it takes.



PHOTOS: Neville Grant & Marilyn Little



ABOVE: We told them they would be in *Tatler*, so they put on their best smiles . . . BELOW: The tug of war was a very popular event . . .

"We now have some very active young families who are getting involved in our events so come and join them and influence our future."

Ed: *The average age profile of those who volunteer is increasing, and it's a fact that healthy communities need people from all generations to be involved if they are to be sustainable. All we might need is an hour or so before and after an event like this, so if you are interested, please contact Marilyn on 8853 1312*

BELOW: Happiness is a bunch of balloons. Happiness squared has lots of teddies, too!

ALSO BELOW:

The stalls did a roaring trade



HOLD TIGHT!



READY?



HEAVE!



LOCAL NEWS

Letters

Views expressed are those of the writers only, and are not necessarily those of the *WN* or the Westcombe Society.

From: Philip Gomm The RAC Foundation
Ministers should consider introducing a new scrappage scheme aimed at taking the oldest and most polluting diesel cars off the road.

Over the past two decades consumers have increasingly been buying diesels, which emit fewer CO2 emissions than petrol-driven cars..

This shift in buying habits means that there are 10 million diesel-fuelled cars on the road. In 1994 there were just 1.6 million diesels. However diesel cars emit significantly more particulate matter (PM) and nitrogen oxide (NOx) than petrol cars. It is estimated that in the UK poor air quality currently reduces average life expectancy at birth by six months.
Ed: Please see also page 7.

From: Sarah Sutton Westcombe Hill
Readers may or may not know that the 286 bus route has recently changed its ownership: it now belongs to New Cross Bus Garage and the Go-Ahead company.

At the beginning of July, when they changed, brand new buses were put on the route. The noise from these buses is atrocious. My partner, Peter, works at New Cross and drives the 108s.

I mentioned it to him to see what could be done and also a few of our neighbours too moaned. He saw the transport manager who asked him to write it in a report. This week, the garage engineer manager explained that they have looked into it and that they also called someone from head office and the manufacturer of the buses to travel around on the route.

We are happy to say that they have found the problem and have found a way to rectify the noise and hopefully in the next few weeks, the 286 buses should be less noisy.

From: Mary Mills Humber Road
The Enderby Wharf/Greenwich Telecoms Heritage campaign continues and is attracting an amazing amount of support. Thank you to everyone who has been in touch and offered help. We are all working really hard – contacting other projects and museums which might be helpful or want to contribute, liaising with English Heritage and archaeologists likely to be working on the site soon – and getting the word out to as many people as possible.

We are always grateful to hear from people who can contribute in any way – and it would also be good to hear from locals who worked on the site and who can tell us more. We are totally unfunded so any professional help would be welcome, but would need to be free.

www.enderby.org.uk
[facebook.com/groups/enderby](https://www.facebook.com/groups/enderby)
twitter.com/EnderbyWharf

From: Gabi Martin Coleraine Road
Much as I admire and appreciate the *WN* – its content, the quality of print, paper and photographs, there is one aspect which I find increasingly infuriating – in every issue. This is the excessive use of exclamation marks.

In my view (and I hope Lynne Truss would agree) they should only be used sparingly and as a last resort. Their frequent use suggests that the writer lacks a sufficiently wide vocabulary to adequately make his/her point. As I am sure this is not the case with contributors to the *WN*, please, please start a cull of exclamation marks.
Ed: Mea Culpa, Gabi! Seriously, we agree with you, and will be ruthlessly wielding the red pen in future.

PETITION from SEIBERT ROAD

There is a deadly issue which is affecting all of us in Seibert Road and many other areas adjoining the A102. The problem is pollution! Our gardens back on to the A102 and suffer from intrusive noise and massive pollution. A recent environmental study has found the pollution levels in our neighbourhood are 2.5 times higher than EU limits. We have organised a petition urging the government to ensure noise and pollution barriers are installed along all residential areas of the A102, as well as pollution reducing trees. The health of our children is paramount and with two schools nearby this affects more than just our families.
To sign this petition, please go to:
<https://submissions.epetitions.direct.gov.uk/petitions/67894>

From: Terry Scales Greenwich
It was good to see your editor at our lively private view some weeks back. Thank you for mentioning Christiana Angelini's and my art exhibition in the *WN*. What a gem of a paper it is, good layout, and lively reading. I note the paragraph on eating dung beetles as recommended by the UN, and can't wait to try one.

From: Ben Pardoe Ruthin Road
My grandmother grew up at no. 39 Ruthin Road which was destroyed during the war. I wonder if anyone has pre-war photographs of the road which may show her house?



PHOTO:
Roger Allen

On 4th August a huge hole suddenly appeared in Mycenae Road just south of the mini-roundabout. There were holes within the hole – one 3 metres deep . . . maybe an old well, thought Roger. The Council were observed looking into it. Moral: If you're in a hole, don't dig!

CHRISTMAS CARDS

Less than four months now before Christmas, and the Westcombe Society wants a new design for a Christmas card. If you think you might have any images – photos/paintings/drawings etc that are both personal and representative of Westcombe Park please could you let us have them for consideration by Sept.20th. We don't offer any financial reward if we use the design but we will of course give the author a credit and some free packs of the card. Designs can be emailed (as jpegs or pdfs) to: r.c.owens@btinternet.com, or delivered or sent to me at 84 Beaconsfield Road, SE3. Sorry, we can't undertake to return entries.
Caroline Owens

‘When the weather is fine then you know it's a sign
‘For messing about on the river.’

But these rowers [RIGHT] from St John's Church SE3 who took part in the "Meridian Pull" challenge from Westminster to Greenwich weren't just “messing about” (in the words of Josh Macrae's song).

The Meridian Pull is an 8.5 mile rowing race on the Thames from Westminster to Greenwich. The aim: to raise money for the AHOY Centre in Deptford.



Phew! Well done, they raised £4,500. Too tired, for a moment, to raise their oars for a big cheer for Nathan Medhurst, for the patience, good humour & superb organisation skills he has demonstrated over the past few months. *Hip hip - HOORAY!*
NOTE: AHOY is a sailing and rowing charity that works with disabled people, and disadvantaged and at-risk young people <http://www.ahoy.org.uk>



ANDREW RILEY

Eight teams took part in the race – St John's entered three boats, each with a crew of six rowers plus a cox to pilot the boat. They were rowing Thames Waterman Cutters – 34ft fixed seat rowing boats based on the traditional boats which were used on the Thames in the 17th century to ferry passengers across the river. Here [LEFT] is one of the teams in action, speeding past the Houses of Parliament.
Keep it up, fellers. “In, out, in, out ...”



Messing about with the river?

In the last issue, the *WN* reported that the Port of London Authority (PLA) was considering changing the name *Bugsby's Reach* to *Waterman's Reach* in commemoration of the 500th Anniversary of the 1514 Act of Parliament regulating watermen, wherryman and bargemen.

The consultation carried out by the PLA revealed that ten favoured the proposal as a “fitting commemoration of the river's past, present and future working life.” However, 34 were against because ‘historic names should be left alone.’

The PLA said that following a consultation, they had decided not to proceed with

the proposal to rename Bugsby's Reach.

Local historian Dr Mary Mills notes in a recent article* that the identity of Bugsby remains obscure. She notes that the earliest reference to the name *Bugsby* seems to be a report in the ‘Gentleman's Magazine’ of March 1735 to ‘Williams the pirate being hung in chains at Bugsby's Hole’. (*Hole* being an ancient name for *Anchorage*). She also notes that, mysteriously, there are a number of “Bugsby Holes” around the world, including one in St Helena.

* To read more of Mary's article, visit: <http://onthethames.net/2014/02/14/platform-defence-bugsbys-reach/>

Adieu, Malcolm Torry

Over a hundred people attended the farewell lunch and service for Malcolm Torry in July, who is leaving after 18 years in the parish. For a long time a much-loved and respected vicar of St George's, he worked in recent years as the co-ordinating chaplain of the Greenwich Peninsula Chaplaincy, and Vicar of Holy Trinity Church on the Greenwich Peninsula.

St George's laid on its usual sumptuous meal, and Malcolm and Rebecca were presented with numerous farewell presents.

All were loud in their praise for Malcolm and his wife and family.

Malcolm said they were very sad to be leaving and had many happy memories, but it was time to move on. He paid tribute to all those he had worked with, especially Cynthia Finnerty, for her work at St George's.

In a farewell address

Esther Whittlesea Reed, a Reader in the parish, said that Malcolm had had a very varied career, having worked for the Department of Health and Social Security for two years, and also having spent a period as an industrial chaplain. He brought many gifts to his ministry, including honesty, sincerity, and a great intellect, as seen in his many books.

He had used his intellect to open the minds and eyes of many parishioners to the word of God. His books dealt with the governance and organisation of the church, and welfare issues – he is director of the Citizen's Income Trust; and she wished him well in his work on his next book at the London School of Economics.



ABOVE: The cake with page one of Genesis - and the cover of one of Malcolm Torry's books.

BELOW, from left to right: The Rev'd Margaret Cave, Vicar of Christ Church, East Greenwich, and Team Rector; Rebecca, Malcolm's wife; Malcolm; the Rt. Rev'd Michael Igrave, Bishop of Woolwich; and Esther Whittlesea Reed, Reader.



PHOTOS: Neville Grant

www.mycenaehouse.co.uk
02088581749
Supported by
ROYAL GREENWICH

Mycenae House and Gardens

New Season
September to December 2014
Check Out the New Magazine from 8th September

120 Activities
Each Week

Halls for Hire : Weddings/Parties/Celebrations

THE LONDON BRIDGES WALK
WE LOVE TO WALK
SUNDAY 14TH SEPTEMBER 2014
COME AND WALK OVER THE BRIDGES OF LONDON AND HELP RAISE MONEY FOR MACMILLAN CANCER SUPPORT
JOIN THE WESTCOMBE SOCIETY TEAM
FOR MORE INFORMATION OR AN APPLICATION FORM CONTACT : CAROLINE OWENS TEL 0208 8530948

FEATURES

The second in our occasional series on local schools

‘Excellent in All Areas’ Blackheath High School receives a glowing inspection report and welcomes a new Headteacher. CORRIE-JANE RAFFERTY reports

Following Mrs. Lisa Laws’ retirement in August, Blackheath High School welcomes a new Head: Mrs. Carol Chandler-Thompson.

Under Mrs. Laws’ leadership, Blackheath High has grown and academic standards have gone from strength to strength, developing an outstanding reputation.

Mrs. Chandler-Thompson has returned from South Korea, where she was ‘Head of the Girls’ School’ at a new start-up independent boarding school: North London Collegiate School, Jeju.

Mrs. Chandler-Thompson is a firm believer in single sex education and attended an all-girls’ school herself. She is committed to the values and ethos of Blackheath High School, which ensure that excellent pastoral care buttresses academic success and that girls are inspired and encouraged through skilful, innovative teaching.

She is delighted to be joining the school at such an important juncture in its history with the school just having received a superb report following the recent inspection by the Independent School’s Inspectorate; saying:

“It is a fitting tribute to Mrs. Laws and the teaching staff that our exceptional school has just received such a glowing ISI inspection report on the outstanding educational provision throughout the Junior and Senior schools.

“It is a privilege to lead Blackheath High into the next phase of its development and I am looking forward to working closely with the staff, students and parents in taking the school forward and building on these achievements.”

The report rated the school “excellent” in all areas, which

covered: pupils’ achievements and learning; curricular and extra-curricular provision; teaching; the spiritual, moral, social and cultural development of the pupils; pastoral care; welfare, health and safety; the quality of governance and the quality of leadership and management. The ISI comments that “pupil achievement in their work and activities is excellent throughout the school and they are very well educated, fully in line with the school’s aim to promote academic excellence.

“High achievement is strongly supported by the pupils’ excellent attitude towards learning, which richly fulfils the school’s aim to nurture a love of learning and develop independent and enquiring minds.”

The school is proud to deliver an education that also provides opportunities to develop skills, to gain knowledge and to strengthen character. In order to achieve this, teaching and learning are supported by unique ‘Pillars of Learning’

These ‘Pillars of Learning’ support the school’s aim to equip pupils with the confidence they need to see opportunities not boundaries, challenges not obstacles, and to believe they have an important contribution to make to their school, to their community and beyond.

These ‘Pillars’ are nurtured, as part of the school’s culture, during lessons, assemblies and form times. For example, to help instil ‘Resilience’, girls are encouraged to take risks in their lessons and to learn the importance of being able to bounce back from failure.

Even the youngest nursery pupils of three years old, have a mantra “be brave and strong, when little things go wrong” and, throughout their school lives the girls are taught to face challenges designed to nudge them out their comfort zones. All the girls participate in outward

bound adventure trips and activities such as debating, public speaking and sport, through which they gain confidence and self-esteem.

Similarly, ‘Enterprise’ is taught through supporting and guiding pupils to plan, organise and manage initiatives such as fundraising events, displaying a wealth of ideas and creative skills with great enthusiasm!

The girls learn to use their initiative, to research products and ideas, and to apply their academic knowledge to ‘real life’ situations; therefore developing resourcefulness and the ability to make informed decisions.

With an emphasis on all round development, each pupil is inspired to aim high in all that they do, academically and beyond.

The school is understandably proud of the students’ excellent academic success, and appreciates that it is also personal qualities and skills that will help their students to climb the ladder of success in a globalised, competitive work place.

As the ISI report states, “the curriculum is broad and balanced and goes beyond the requirements of the National Curriculum

“Throughout the school, curricular provision inspires excellent learning and provides opportunities to develop thinking skills and to enrich personal development, giving pupils the chance to value their education in wider terms than qualifications alone.”

Indeed, the curriculum is broad, innovative and is enhanced by a programme of enrichment activities.

All girls study at least one



The girls achieve excellent A level grades in all subjects including sciences and maths

modern language, even in the Nursery where they start French. Mandarin is introduced from Y7 and all senior girls study two modern languages, plus Latin.

They also study Philosophy and learn to cook. Pupils are prepared for the three separate sciences at GCSE and most sixth formers include either maths, or at least one science subject, in the four subjects that they study at Advanced level.

Another aspect of the education offered at Blackheath High that makes it stand out from other schools is the focus on the individual and her talents and potential. BHS is not a school where girls are forced into a particular mould.

Students are encouraged to discover and nurture their own passions, not follow the crowd.

They are challenged to exceed their own expectations and therefore achieve more than they might have initially thought possible. The alumnae boast careers as diverse as environmental engineering, law at the international criminal court and fashion design.



Instilling confidence

Girls are equipped with the ambition to succeed and the skills to be happy and thrive in their chosen field whatever that might be. That field is quite often a ‘traditional’ academic path at their chosen university, but it might equally be a different path to a career in cookery writing or comedy acting or the arts.

Including the arts ...



Performing in a Junior High Concert



Each Year 8 student produced Art Deco-inspired jewellery and ceramic plates as part of their Art and Design Technology studies. The designs were scanned and digitally enhanced before being printed onto transfers then applied to ceramic plates and fired in the school kiln. Their work was displayed at Eltham Palace earlier this year.



Our girls (aged nine to 17) relished the challenge of interviewing the UN Assistant Secretary General and other important international figures from their digital radio station to mark the United Nations International Womens Day. They covered a wide range of subjects including conflict, famine and gender equality



BASED IN GREENWICH, WE ARE YOUR LOCAL ELECTRICAL SERVICES COMPANY.

From changing a light bulb to a full rewire... Carrying out an electrical safety inspection to fault finding...

WE CAN DO IT ALL!

We are NICEIC approved and a member of the Electrical Safety Register.

For a free quotation, please call or email and we'll be happy to help.

p: 020 83336759 m: 07887 571058 e: tpn@vikingpower.co.uk



Gaining their Professional Association of Diving Instructors certificates for snorkelling

Grant Saw Wealth Management Limited

INDEPENDENT PERSONAL and CORPORATE FINANCIAL ADVISERS

Investments - Pensions - Estate Planning
2 Charlton Road, Blackheath Standard
London SE3 7EX (T) 020 3417 9760
email: enquiries@gswealth.co.uk
website: www.gswealth.co.uk.

HELPING YOU PLAN YOUR FUTURE

Grant Saw Wealth Management Ltd. is authorised and regulated by the Financial Conduct Authority



The School's Open Mornings 2014:

Sat. 11th Oct.
Thurs. 16th Oct.
Wed. 5th Nov.
Wed. 12th Nov.

www.
blackheathhigh-school.gdst.net

MEND YOUR ENGLISH

or
What We Should Have Been Taught At Primary School

Ian Bruton-Simmonds

Its focus on the BBC is unique

£9.99 from the British Library Bookshop or other good bookshops. Also available at Nicky's News in Old Dover Road

WHAT'S ON

ARTS

THE GREENWICH GALLERY

Peyton Place SE10 8RS 07956 456647

ON OUR STREETS - season of Street Photography Exhibition No 2 Until 3rd September 2014 Photographer: Steven Spencer Smith FRPS explores the people and scenes within London for the duration of the games.

NATIONAL MARITIME MUSEUM

THE QUEEN'S HOUSE: WAR AND MEMORY Until Nov. 16th: 10.00 am - 5.00 pm Free.

Rozanne Hawksley's work examines remembrance, representation and memory in the fitting setting of the Queen's House **ALSO in the QUEEN'S HOUSE: WAR ARTISTS AT SEA** Until February 2015 A new display showcasing the very best of the museum's collection of First & Second World War art **Continuing: GUIDING LIGHTS:** marking the 500th anniversary of Trinity House

THE ART AND SCIENCE OF EXPLORATION 1768 - 1780 in The Queen's House. See the Stubbs Kangaroo saved by the public, and work of artists from all three of Captain Cook's voyages

BLACKHEATH DECORATIVE & FINE ARTS SOCIETY, St Mary's Church Hall, Cresswell Park, Blackheath 4th Thursday of every month, 2.00 for 2.30. Next meeting: 25th Sept. AGM at 2.00 pm. 2.30 pm: Lizzie Darbyshire talks on A Pot of Paint in the Public's Face: the quarrel between John Ruskin and Whistler, and its legacy Non-members £5 on the door.

GREENWICH DECORATIVE & FINE ARTS SOCIETY King William Court, the University of Greenwich NEXT LECTURE: 020 8852 7873 Non-members £8.00

MADE IN GREENWICH GALLERY

www.madeingreenwich.co.uk 324 Creek Rd SE10 "SAIL!" Until Sept.21st: A mixed show to coincide with the Tall Ships Festival

Wendy French and Chrissie Gittins will be reading from their collections on 9th September (7.30), with the participation from the floor of Bernadette Reed and 'Jazzman John' Clarke. Also jewellery, glass, ceramics, textiles, cards and books. Open Tuesday-Sun 11 -5.30

OPEN HOUSE LONDON 2014

This is on 20th and 21st September

CHILDREN & FAMILY

GREENWICH THEATRE Crooms Hill,

Greenwich Box office: 020 8858 7755.

ME AND MY CAT Sun. 21st Sept. 2.00 pm One morning the phone rings at the Amazing Kitamura Detective Agency. Detective K answers. It is a boy called Nicholas, but on the screen, we see a picture of a cat. He needs help, fast! Ages 6+

SE LONDON DADS GROUP DADS ALERT:

Regular stay-and-play for dads and children under five @ Sherington Children's Centre, 14 Sherington Road every Wednesday from 9:30 - 11:30am. Contact: www.SELondonDads.org.uk or email: info@selondondads.org.uk

DANCE

BLACKHEATH HALLS

TEA DANCE Wed 10th Sept. 2.00 pm **AND Wed. 1st Oct. 2.00 pm**

CANCER RESEARCH keep fit & in shape plus Line Dancing at Kingswood Hall, Kingswood Place, off Dacre Park SE13 Donation £5.00 for Cancer Research Every Wed. 10.00 - 12 noon Please ring Rosalie Vexter on 8852 7127

THE WESTCOMBE SOCIETY

Macmillan World's Biggest Coffee Morning Friday

26th September - 10.00am - 2.00pm, Mycenae House

Children's Nearly New Sale Saturday 27th Sept.

Members' Evening – Saturday 11th October –

Chrysanthemum Tea Saturday 25th October

Quiz Friday 7th November – evening, main hall

Christmas Bazaar Sat. 22nd November at

Blackheath High School, Mycenae Road

Please ring Joanne on 07709 571777 if you would like to help out on any of these events!

COMMUNITY

WOODLANDS FARM 020 8319 8900.

Wednesday 3rd September - Bat Walks: 7.30pm

Join us for a bat walk around Woodlands Farm. We have a number of different bat species living on the farm. You will need sturdy footwear, suitable outdoor clothing and a torch. This activity is not recommended for children under 6. £4 per adult and £2 per child. Booking is essential. To book call 020 8319 8900.

Apple Day: Sunday 12th October - 11am - 4pm

Join us for a celebration of British apples on Sunday 12 October 2014, from 11am to 4pm.

CANCER RESEARCH LUNCH

Thurs. 4th September at The Clarendon Hotel, Montpelier Row, Blackheath SE3 0RW Prize draw & Raffle. To book, call Wendy on 8265 0335 by Mon. 1st Sept. £8.50.

INDUSTRIAL HISTORY SOCIETY

23rd September Gordon Dennington on The Decline And Fall Of Zeppelin Raiders Meeting at The Old Bakehouse, Bennett Park, SE3. Please use the car park behind the station. Meetings start at 7.30: non members £1.

BLACKHEATH BRIDGE CLUB duplicate sessions in Mycenae House Mon. & Thurs. 7.15 pm & on Wed. at 1.15 Tel. 8851 2609

WESTCOMBE WEDDERS' CIRCLE 1st. Thursday each month, 2.30-4.30 at Mycenae House. Ring Joan Rosemary Gill on 8858 5088

BLACKHEATH FLOWER CLUB Third Friday of every month at 1.45 pm at Mycenae House

BLACKHEATH & GREENWICH WOMEN'S INSTITUTE: First Wednesday of every month at 7.30 pm at Sunfields Methodist Church, Old Dover Road, SE3 8SJ eileenflanagan194@btinternet.com

GREENWICH MERIDIAN CHOIR If you are interested in joining the choir as a regular member, (rehearsals are on Thursday evenings during term time), contact Jean Valsler on 0208 8527548 or email brookjean@btinternet.com

LIVE JAZZ AT MYCENAE HOUSE

Candlelit jazz, special guest on the second Friday each month. Bar & Food available. 8pm. £10/ £8

GLOBAL FUSION MUSIC & ARTS Free workshops Fortnightly Tuesday & Friday evenings 7.30 - 8.30 at Mascalls Meeting Rooms off Victoria Way

Charlton SE7 7TT: Tai Chi. Singing, Drumming, Writers' Group, African Dance Info: 020 8858 9497

THE BEST PUB QUIZ IN GREENWICH every Monday at 8.30 pm at the Vanbrugh, Colomb Street. Entry £2.00

THE CLARENDON HOTEL, Montpelier Row,

Blackheath Tel. 8318 4321 Jazz

every Wed.from 7.00pm in the bar!

ENGLISH FOLK MUSIC 9.00pm

every Tuesday at the Lord Hood

pub, Creek Road; jazz Thursdays

GREENWICH YACHT CLUB



Sat 20th - Sun 21st Sept

12-5pm. OPEN

HOUSE EVENT FREE

guided tours of the boat-

yard, sail-loft, workshops

plus members' bar. Also

annual Art Show. Drinks

and snacks available.

Address: 1 Peartree Way,

Greenwich SE10. 500

yards downriver of the

O2, on river path

WORSHIP

St George's

Glenluce Road:

11am Parish

Communion with

Children's Church

for ages 3 and up.

First Sunday in the

month is an all-age

service

THEATRE

THE GREENWICH THEATRE Crooms Hill,

Greenwich, London SE10 8ES 020 8858 7755

WATCHING THE LIVING by Daphne du Maurier

Sat. 13th - Sun. 14th Sept. A chilling discovery, a terrible secret. Two classic stories, one spine-tingling evening

THE MUDDY CHOIR by Jessie Britton Monday

22nd - Wed. 24th Sept. It's November 1917 and the

Third Battle of Ypres is lurching towards its bloody

conclusion as young soldiers Will, Robbie and Jumbo

are thrust into a nightmare landscape

GOETHE'S FAUST Thurs. 25th - Sat 27th Sept.

In DumbWise's stylish re-telling of Goethe's classic

tale, a young man sells his soul for fame and fortune

GREENWICH & LEWISHAM YOUNG PEOPLE'S THEATRE & TEATRO VIVO present

Berthold Brecht's **MOTHER COURAGE**

Opening 5th September. School and public tickets

available on 8854 1316 www.GLYPT.CO.UK

THE SPACE 269 Westferry Road London E14

3RS 0207 515 7799 / www.space.org.uk

Nearest stn: Mudchute (DLR) Buses: D3, D7, 135

ANNA WEISS Hypnotherapist reveals "lost" memo-

ries . . . 26th August - 13th Sept, 7.30 pm

THE GREENE CARD: The Unbelievable, Yet

Completely True, Story of a Brown Boy in a White

World 16th - 20th September, 7:30pm £13/ £10

Sevan must escape the ravages of the Gulf War for a

chance at the American dream . . .

BELFRY 23rd Sept - 4th Oct, 7:30pm £14/£12 The

third & most soulful part of Billy Roche's critically

acclaimed Wexford Trilogy, Belfry is a tale of memo-

ry and consequences of first - and forbidden - love

THE GEOFFREY WHITWORTH THEATRE

Beech Walk, Crayford, DA1 4NP 01322 526390

bookings@the gwt.org.uk

QUARTET by Ronald Harwood 11th - 18th Oct.

LONDON THEATRE 443 New Cross Road, Outer

London, SE14 6TA (Near New Cross Station)

Box office 0208 694 1888

Tues 2nd - Sun. 7th Sept £12.50 8pm (Sun 5pm)

KABALE UND LIEBE by Friedrich Schiller

(In German) Ein deutschlandweit bekanntes Stueck

performt in seiner originalen Sprache, inszeniert von

Annalisa Stephan. Karten 0208 694 1888

Tues 9th Sept to Sun 14th Sept £12.50 8pm (Sun

5pm) BOUNCERS by John Godber NEW 2014

version! It's Saturday night and the drinks are flowing

At present, this is the most performed play in the UK

Modern Brecht at its best! **£12.50 Members £5**

Tues 30th Sept to Sun 5th Oct 8pm (Sun 5pm)

£12.00 Venturewolf present **EDWARD II** by

Christopher Marlowe

FRIENDS OF GREENWICH PARK

DROP In at the Wildlife Centre Sat 27th Sept &

Sat 25th Oct. 1.00 - 4.00 pm Near the south end of

the lake in the Flower Garden.

HAVE YOU MADE YOUR WILL?

Peter Bowyer, Professional Will Writing Services

(Member of the Society of Will Writers and the Institute of Professional Will Writers)

Single/Double Wills
Powers of Attorney
Professional Insurance
Home Visits

0800 389 7387
www.londonwills.com

WRISTWORTH HEATING & PLUMBING

Installation - Servicing - Repair

Tel: 07725 008280

Email: wristworth@hotmail.co.uk



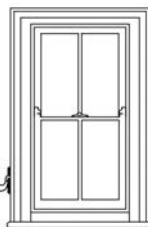
Check Out Our **NEW** Website: wristworthheating.weebly.com

SASH-WINDOW DOCTOR

FENSA registered member of a www.trustatrader.com

Traditional box sash window specialist. Years of family tradition and expertise guarantees a high quality service that will preserve the aesthetic appeal and add value to your property.

- Installation of double glazed sashes into existing frames.
- New for old - like for like - full box sash replacement.
- New bespoke doors and casement windows.
- Draught proofing.
- High standard finish on all products and services.
- Free diagnosis and estimate.



Contact **Peter Denney** on **07855 858 184** Email: Peter@sash-doctor.co.uk



TROJAN PRESS

Printing in Blackheath since 1978

FROM YOUR IDEAS OR ARTWORK WE CAN PRINT AT A REASONABLE COST:
• BUSINESS CARDS
• INVOICES • LETTERHEADS
• BOOKS • BROCHURES
• FORMS • INVITES
• WEDDING STATIONERY

La Lizban s t
blackheath, London s e 3 8 s
t el: 020 8853 2268
e mail: dave@trojanpress.co.uk
www.trojanpress.com

BLACKHEATH HALLS

MONDAY LUNCHTIME RECITALS

MON 22 SEPT 1.10 pm Charlotte Derry lyric

soprano Horacio Lopez Redondo piano, perform

Songs by Barber, Mozart, Strauss and Debussy.

MON 29 SEPT 1.10pm Anna Cashell violin

Chihiro Ono violin/viola Simon Watterton piano

perform Ligeti, Prokofiev and a Bax Trio

Wed 24th Sept. 8.00 pm NAOMI WOOD on her

novel **MRS HEMINGWAY** How it was to love –

and be loved by – the most famous writer of his generation. The story of Ernest Hemingway's four wives.

£10.00 with a free glass of wine

JC AND THE IMAGINARY BIPOLAR BAND

Piano And Voice THU 25 SEPT 7.30 pm Recital

Room, Blackheath Halls

JC AND THE IMAGINARY BIPOLAR BAND was

formed by Jeremy Clark with five imaginary musi-

cians. All proceeds from ticket sales will go to the

charity Bipolar UK, aiming to fund a peer support

group in Blackheath. TICKETS: £10

SUN 28 SEPT 11.00am Nikolai Demidenko Piano

plays GLINKA KALINNIKOV BLUMENFELD and

CHOPIN - Nocturnes and Sonatas

AGE EXCHANGE

BOOK SALES: on the second Saturday every month (except August & December) 10.00 am - 4.00 pm.

LUNCHTIME CONCERTS on the last Wednesday

of every month by Trinity Laban students. Free, but

there is a retiring collection in aid of Age Exchange &

Blackheath Village Library.



Learning is fun

St Olave's is a Prep School in New Eltham for boys and girls aged 3-11 years

- Broad, child-centred curriculum
- Excellent results in the 11+ selection
- Clubs, outings and residential trips
- Excellent pastoral care
- Small classes
- Specialist staff for PE, IT, Music, French and Drama
- Sibling fee reduction
- Before and after school care

Tel: **020 8294 8930**
www.stolaves.org.uk



The Pointer School (Blackheath)



- First class examination results
- Organic food
- Breakfast club and after school care (8am-6pm)
- Christian Evangelical in ethos
- Numerous extra-curricular clubs (Archery to Horse Riding)
- Large variety of outdoor and PE activities
- *The Brazilian Kickers* – teaching football the Brazilian way
- Holiday Club (Christmas, Easter, Summer and half-term)

OFSTED: OUTSTANDING IN ALL AREAS

T. 020 8293 1331

E. secretary@pointers-school.co.uk

W. www.pointers-school.co.uk

FEATURES

Meet your neighbour. JANE GRANT talks to

Margaret Cave



The Revd. Margaret Cave, who now lives in Westcombe Park, has worked in industry, in the financial sector, and also as a primary school teacher, and in the voluntary sector, meanwhile becoming the mother of four sons. Now, she works for God, or more accurately perhaps, the Church of England (Margaret herself would say that she also works for the community). I spoke to her on a crucial day for the Church of England as we waited to see whether the General Synod would vote through the legislation for female bishops. **So, Margaret, what exactly is your current job?**

I am Team Rector of the Parish of East Greenwich which includes three churches: Christ Church, Trafalgar Road; St. George's Westcombe Park; and Holy Trinity in Greenwich Peninsula. This involves leading the East Greenwich team ministry including oversight of St George's, though within the team, I prefer to use the phrase *primus inter pares* as I seek to build a collaborative team approach. In early September a new team vicar, Tim Yeager, who is coming over from Chicago, will be licensed at St George's as part of our team which we are looking forward to very much. **What was your route to this important and demanding post?**

Well I was brought up in Scotland, read engineering at Durham University and worked in engineering before moving to the City to work in banking. I then retrained as a primary teacher, had four sons (now aged 17-23) and began to do a lot of volunteering in the Church including at St John's, Blackheath. Strangely enough I had always felt as a young woman that I would become a vicar – even before it was possible for women to become vicars ... so it was a logical next step to go and train for ordained ministry and I had a strong sense of vocation to the role of the priest. I was ordained at Southwark Cathedral in July 2010 and served my title post at St. James, Kidbrooke.

Is that when you started the one Space Youth Club?

Yes – It was an amazing project setting up a new youth and community centre in Kidbrooke Village and a real privilege to be involved in it. I was the first Director of OneSpace and also chaplain to OneSpace and Kidbrooke Village.

Then you moved to East Greenwich?

That's right. I was appointed to my present job in May last year and was instituted and inducted on 9th September 2013. I feel it was a matter of 'right place at the right time' and I feel very privileged to be serving in my present post especially as Southwark Diocese is a very popular place to work in, so much so that it is a net exporter of clergy. It is very exciting to work in an area of enormous diversity and rapid change. I am very much enjoying

working in a team ministry and am just finishing an MA thesis on 'Can, and if so how, does a team ministry flourish in The Church of England?'

How do you feel women have done since they won the right to be ordained?

Women can bring special qualities and insights. They have brought benefit – in fact completion – to ordained ministry in the Church of England, which most people welcome and are extremely happy about. There are, of course, some within the Church who are less sure about it and most women ministers would have a story to tell of people rejecting their ministry, but this is only a very small part of the story. But I do feel it is very important for those who resist to the ministry of ordained women to retain an honoured place in the Church, even though I find it difficult to understand their opposition.

What do you consider special about the Church in this part of London?

I understand the Church to be a 'community of difference' – flawed people coming together to love and serve God and love and serve the local community – and that is just what it is like in our parish. I am committed to working together with other churches locally and also to building up good relationships with other faiths. Working in partnership is very important and I am enjoying building up our relationships locally with the Forum@Greenwich, other local church leaders and other faith leaders, for example, I am a trustee of the multi-faith Greenwich Peninsula Chaplaincy. I am delighted that we have a Church of England primary school in our parish and I am committed to my role as a school governor there as well as taking school assemblies. I am also enjoying working with the community schools in our parish - our local deanery cluster of Church of England churches took an Easter play out to our local schools this year and will be inviting all the Year Two children in our local schools into our churches to experience The Christmas Journey in early December.

Finally, what do you feel about the appointment of women as bishops?

When the last vote failed in 2012 it was awful, as if one was rejected as a woman priest, but now I feel as if the Church will come back stronger as a result. If it is turned down now it will be a real impediment, but I am quietly confident that won't happen. **Thank you, Margaret, and pray that you are right.**

[Shortly after it was learnt that the General Synod of the Church of England had voted to allow women to become bishops for the first time in its history.]

The Tall Ships Festival

Royal Greenwich will be the final port for the prestigious Falmouth to Royal Greenwich Tall Ships Regatta in September. From Friday 5th to Tuesday 9th there will be five days of exciting activities over five different locations: Royal Arsenal Woolwich, West India Dock, Enderby's Wharf, Victoria Deepwater Dock, and Maritime Greenwich.

The Crew Parade is on Sept. 6th: ship by ship, the crews, many in uniform or fancy dress, will pass through Greenwich Park, around Greenwich Town Centre and into the National Maritime Museum. The parade is expected to be a kilometre in length. That day, the Greenwich gyratory system will be closed from mid-morning.

Residents and businesses in Westcombe Park should note that parking restrictions will apply on the Sunday as well as other days: they don't need to do anything. A new controlled parking zone from Charlton



to Woolwich Dockyard will also be in place for the five days.

For info: www.sailroyalgreenwich.co.uk/
For queries about transport plans email: tim.jackson@royalgreenwich.gov.uk.

Fancy a Tall Ship Cruise?

The following are on offer. Discounts apply for children, students, & seniors (65+). To book, visit www.sailroyalgreenwich.co.uk/en/thamestallshipcruise

THAMES TALL SHIP CRUISE

You will embark at Royal Arsenal Pier, Woolwich, and proceed to the Thames Barrier, past the O2 Arena, Emirates Air-Line, Canary Wharf, Queens House and The Royal Observatory, crossing the Meridian Line, which in the evenings is marked by a laser. After passing the Old Naval College and the Cutty Sark, the ship will return to Royal Arsenal. **Tickets adults: £59.90**

THAMES TALL SHIP CRUISE + FIREWORKS (EVENING CRUISES)

Sailing route of this cruise will be the same as the regular cruise, and includes Fireworks. You will watch the Fireworks, set off on the river, on board. **Tickets adults: £79.90**

VIP THAMES TALL SHIP CRUISE - TOWER BRIDGE + FIREWORKS

Enjoy a full day or night on the river. The cruise departs daily at 6.30pm, and in the reception area you will receive a welcome

drink, snacks, and a delicious buffet dinner. There is a cashbar available. In the evening there is a special fireworks display. **Tickets adults: £139.90 (daytime) / £149.90 evening**

VIP THAMES TALL SHIP CRUISE - PARADE OF SAIL

This year's highlight: the cruise departs Tues. 9 Sept. at noon. You will be part of the fleet of 50+ Tall Ships gathering near Greenwich sailing out to the sea. In the reception area you will receive a welcome drink. Includes a delicious buffet lunch, an various savoury snacks. Cash bar available. **Tickets adults: £159.90**

LOCAL RESIDENTS' SPECIAL OFFER

Local residents are being offered a unique chance to experience the magic of a music concert on board the Shtandart for a two-hour trip from just £15 per person. The offer is available for just four visits on Sat. 7th and Sun. 8th Sept. You get a free drink in the departure lounge, before being escorted onto the ship by a traditional piper.

For tickets please call: 020 8921 6269

Autumn at the Albany

The Albany arts and activity centre, based in Douglas Way, Deptford SE8 4AG, has become a vibrant new cultural hub. The Albany's new season is one of its biggest and boldest to date.

There's a lot going on this autumn: you can discover the hidden rivers of London, go hunting for fairytales, participate in a nationwide celebration of culture, or learn about the history of South Africa.

The Bold Festival (Monday 15th - Saturday 27th Sept.), provokes audiences to think about ageing differently, including *Home Sweet Home* (Tuesday 23rd - Saturday 27 September), a new play by Emma Adams based on the true stories of 200 older people. The Bold Festival also includes Ira Brand's *A Cure for Ageing* (Thurs. 25th - Sat. 27th September).

The internationally renowned Belarus Free Theatre stages the world premiere of *Price of Money*, (Tues. 16th - Sat. 20th September), an exploration of how theatre has depicted money through the ages.

This production marks the beginning of a long term relationship between the Albany and the company, which will see several projects taking place over the next three years.

The Albany is proud to be the home of the national Fun Palaces 2014 project

(Sat. 4th and Sun. 5th October). Taking place at over 100 venues across the UK, this vast communal campaign for arts and culture will mark the centenary of Joan Littlewood with a programme of participatory, free cultural activity for all to enjoy. Deptford will host its own Fun Palace, featuring Cirque Bijou's Source (Sunday 5th October), an open air circus show inspired by the city's forgotten rivers. Many other events are planned for the rest of the year.



PHOTO: JAN BARNETT
This was the scene in Lewisham on August 14th when torrential rain turned the main street into a fast-flowing river, and a number of cars broke down. Jan Barnett told the W/N people could not get to the bus station because the water was knee deep in places.

JAMES REMOVALS
"excellence through effort"
.com

● Fully trained uniformed staff
● Full insurance included in ALL quotes
● Prompt free estimates
● On-site containerised storage
● Discounts for long-term storage
● Well-established family business
● Pianos - our forte

Call 0800 0157775
for a free survey or visit jamesremovals.com to request a quotation online

Call 0800 0157775
for a free survey or visit jamesremovals.com to request a quotation online

BAR Member no. J028

OFT Approved code

FTA MEMBER

Singing with Joel

Blackheath Centre for Singing, based at Mycenae House, is starting its new term soon, and we have several new activities and concerts on the horizon. Our aim is to provide musical opportunities for the local community, including lessons for groups and classes of all abilities. Our programme includes Vivaldi's Gloria on Oct. 3rd. and a Christmas Concert
Email: info@blackheathcentre-forsinging.com **Tel.** 07986 582844
Joel Thomas (Choir Director): Joelthomas12345@hotmail.co.uk



Planning applications can be viewed in the library, or at the Woolwich Library on the lower ground floor of the Woolwich Centre, 35 Wellington St. They may also be viewed on www.greenwich.gov.uk/planning

Wind turbines

MAURICE ROSE

No doubt many readers will have noticed the two wind turbines outside Sainsbury's. I am told that, together with some solar panels, they generate all the energy needed for Sainsbury's.

Then one day I saw the turbines were not working and enquired the reason for this. I was told that they do not need to operate all the time because the supply is more than enough for the needs of the store, and that the surplus energy is fed back to the National Grid.

This particular type of wind turbine is a Swedish design, more suited for urban environments, with a smaller vertical spiral turbine as opposed to the larger propeller type of turbine one normally sees.

It struck me that these turbines could be in use all along the peninsula. They take up very little space compared to the propeller type which rely on wind from a single direction. The spiral type function whatever the wind direction.

I can envisage at least two dozen more spaced along the shopping complex car park. Think how much energy they would generate. They take up very little space and are not an eye-sore. Indeed from an aesthetic point of view they are quite attractive – certainly more so than the



PHOTO: Neville Grant

hideous propeller type. They could be installed in all supermarkets and car parks and shopping complexes. I can see these little wind turbines all over the borough.

An ideal site for these turbines would be a large area of grazing land near Plumstead. This space alone could house hundreds of small spiral turbines. One could have them all along the motorways, on railway lines etc. I can visualise them all over the country. Maybe this vision of mine is not feasible. Perhaps some of your readers can enlighten me.

Fly-tipping



One evening in July Austin Howard aged 9 noticed a large canister had been dumped in Humber Road. From it flowed a wicked-looking substance.

The canister was at once placed upright to prevent further leakage, and the police were phoned. They turned up with four cars and immediately sealed off the area.

The next day the council arrived and placed some absorbent substance over the mess – whatever it was – and it

appears to have worked.

"I still don't know what it was," said local resident Michael Howard, "but thankfully the authorities acted quickly."

The Council website states: "Dumping rubbish on the streets is unsightly, dangerous and unacceptable. We work with the police, the Environment Agency and surrounding London boroughs to prevent this practice. If the offenders are identified we prosecute them."

The Council asks that



PHOTOS: Michael Howard

incidents should be reported promptly, with as much detail as possible, including any information about the perpetrators.

The Council's website continues: "We will remove all small flytips (equivalent to a small van load) within 24 hours and, if possible, take action against those responsible.

Large flytips (more than a van-load) will be dealt with by contractors within four working days on a priority basis."

London's air quality

WN reporter

In 2011, the Localism Bill allowed government departments to pass on EU fines to London boroughs for missing air quality targets. How such fines should be apportioned remains a big question: for example, what percentage of traffic pollution in Greenwich is caused by traffic from other boroughs – and from outside London?

The powers that boroughs have to improve London's air quality are very limited. In July, in an 'Air Quality Manifesto', London Councils joined the Mayor of London's calls for more powers, and funding, to improve London's air quality.

London Councils also believes the Department for Environment and Rural Affairs should not pass on EU fines to London boroughs.

Cllr Julian Bell, Chair of London Councils' Transport and Environment Committee (TEC) said: "Boroughs are taking significant steps to improve the quality of London's air, but this is a pan-London problem. Passing on EU fines now would impede boroughs' hard work in improving air quality. We think that passing on EU fines to boroughs is unfair, because at the time the government was already exceeding air pollution targets and faced up to £300 million in fines.

"It is also unreasonable as poor air quality does not respect borough boundaries."

He added that organisations such as TfL and the Environment Agency seriously

undermine efforts to improve air quality (the tax incentive scheme to encourage diesel cars is just one example...)

"Our message is clear – boroughs need the money and the power to make changes without their efforts being undermined by government or the looming threat of multi-million-pound fines."

The proposal to impose a surcharge on diesel-powered vehicles in a new Ultra Low Emissions Zone is one such initiative.

In Greenwich, there are fears that Greenwich Council is heading for a large fine, hell-bent as it has been on development, willy nilly, regardless of the environmental consequences. This is the likely outcome of the huge developments being approved by the Council, for example, along Trafalgar and Woolwich Roads, and elsewhere, where air pollution is already known to be well above EU limits.

River crossings

TfL would like your views on options for new river crossings in east and south east London that will help improve connectivity across the River Thames.

This is following a consultation which ended in February 2013. The options for new river crossings are as follows:

- * A new ferry or bridge at Gallions Reach
- * A new ferry at Woolwich
- * A bridge at Belvedere

For full details and to have your say, including a list of roadshows where you can speak to a member of staff, please visit tfl.gov.uk/new-river-crossings

The consultation closes on Fri. 12th Sept.

A & A LANDSCAPES Landscape Specialists



Free advice & estimates

Qualified horticulturalist

All aspects of soft & hard landscaping work carried out including

- * Maintenance
- * Site clearance
- * Turfing
- * Tree surgery
- * Fencing
- * Patios
- * Brickwork

Tel. 020 8318 2530

Comment from Anne Robbins of the Westcombe Society Environment Committee

From my limited reading (google 'vertical axis wind turbines vs horizontal'), this type of turbine is more expensive to build and less efficient in using wind, while also requiring more maintenance than the more common bladed horizontal turbines. They are better for bird and bat life, more aesthetically pleasing, and a little quieter. At first glance they do look a better option, but they have basic engineering problems that lead to maintenance difficulties, which is why they cannot be built tall enough to access steadier wind currents.

However, I haven't seen the Sainsbury's turbines being used for over a year, on any of my visits there, and I suspect that they have basically been decommissioned due to maintenance costs, though I doubt Sainsbury's would wish to admit to this. If surplus production of energy can be fed back into the grid, why would Sainsbury's not keep the turbines running at all times? So I would query their response to Mr Rose.

Of course there could be more wind turbines throughout the car park, which is owned and operated by the Royal Borough of Greenwich. I am sure that there all sorts of reasons why Plumstead Common is not a suitable site for turbines, though, such as protection of habitats and land ownership issues. It would be great to insist on high levels of renewable energy production, and energy efficiency, for all residential developments, and for office or manufacturing sites too. In many sites, though, turbines aren't appropriate, and can't be attached to buildings due to vibration damage and noise. That tower at the Elephant and Castle is an example: the turbines built into the top can't be used, because of noise. Much more appropriate are solar panels, and the regulations for new buildings encourage these. But we have quite a long way to go, to catch up with Germany or the Scandinavian countries.



Estate agents & surveyors, established in 1975. Branches in Westcombe Park, Blackheath, Greenwich & Lee, alongside dedicated branches for Lettings & Commercial.

Contact the Westcombe Park branch on 020 8858 6101

John Payne

johnpayne.com

